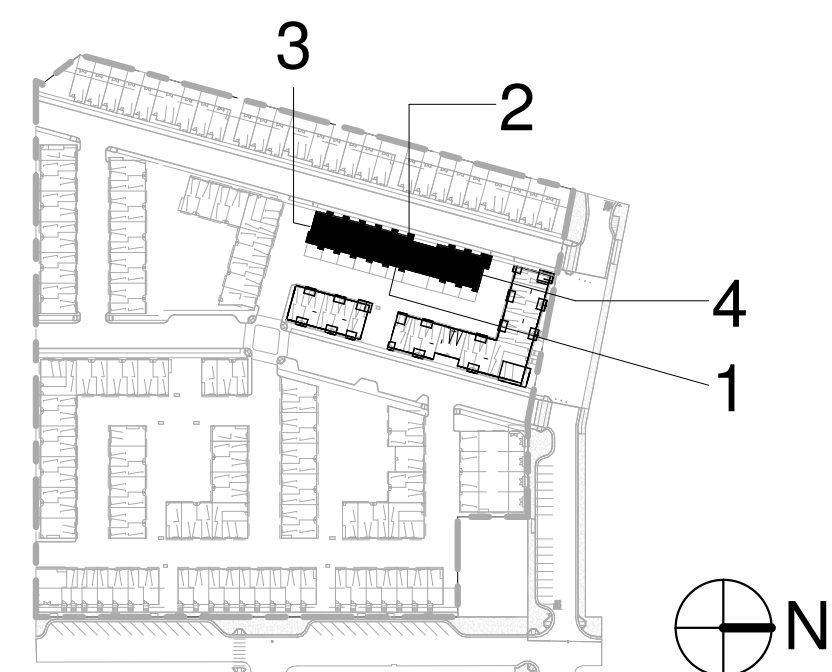




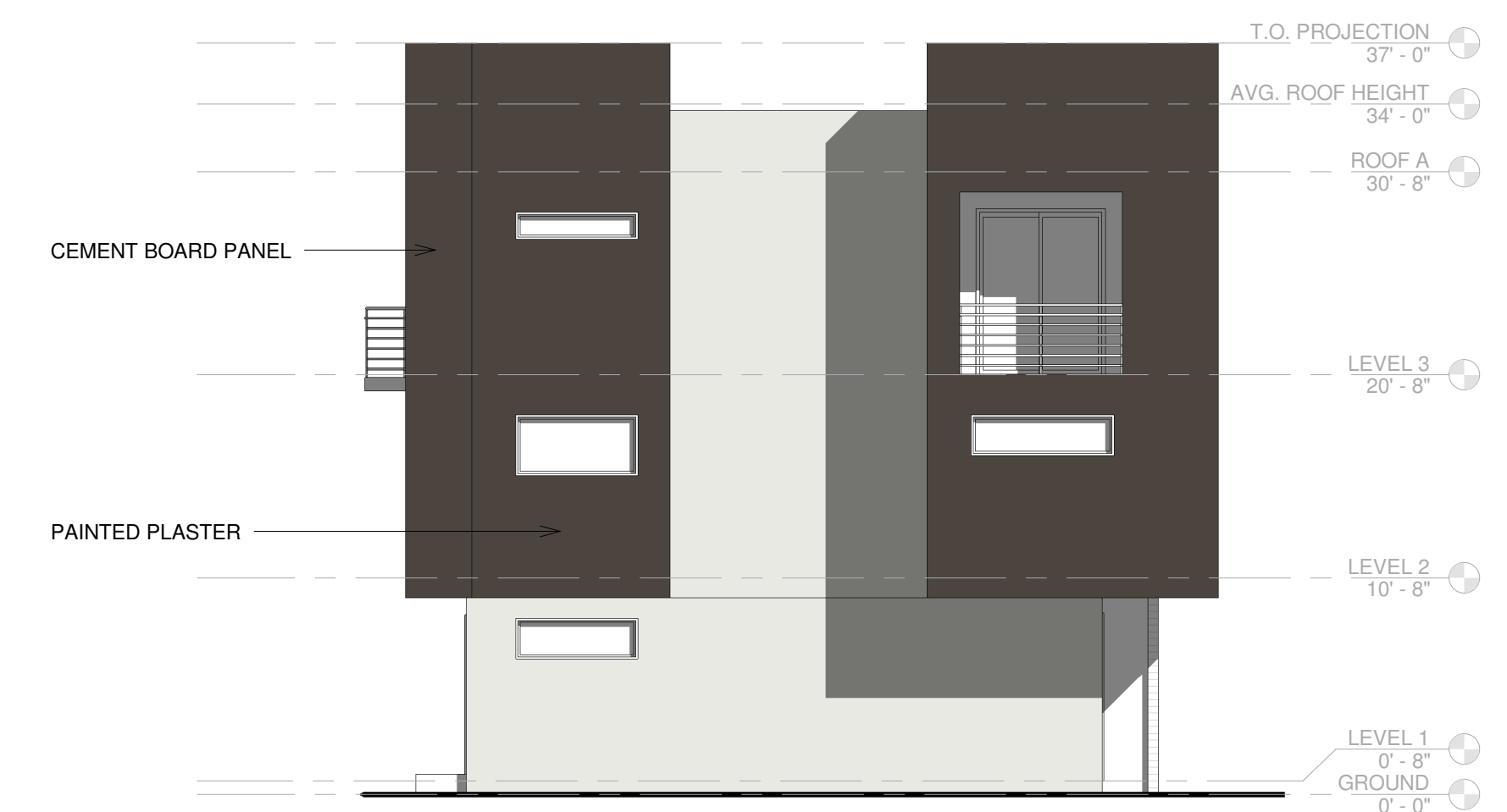
1 ENGINE (A) - PULLMAN WAY WEST ELEVATION
SCALE: 1/8" = 1'-0"



2 ENGINE (A) - BAY ALLEY EAST ELEVATION
SCALE: 1/8" = 1'-0"



3 ENGINE (A) - MYRTLE ALLEY SOUTH ELEVATION
SCALE: 1/8" = 1'-0"



4 ENGINE (A) - BAY ALLEY NORTH ELEVATION
SCALE: 1/8" = 1'-0"