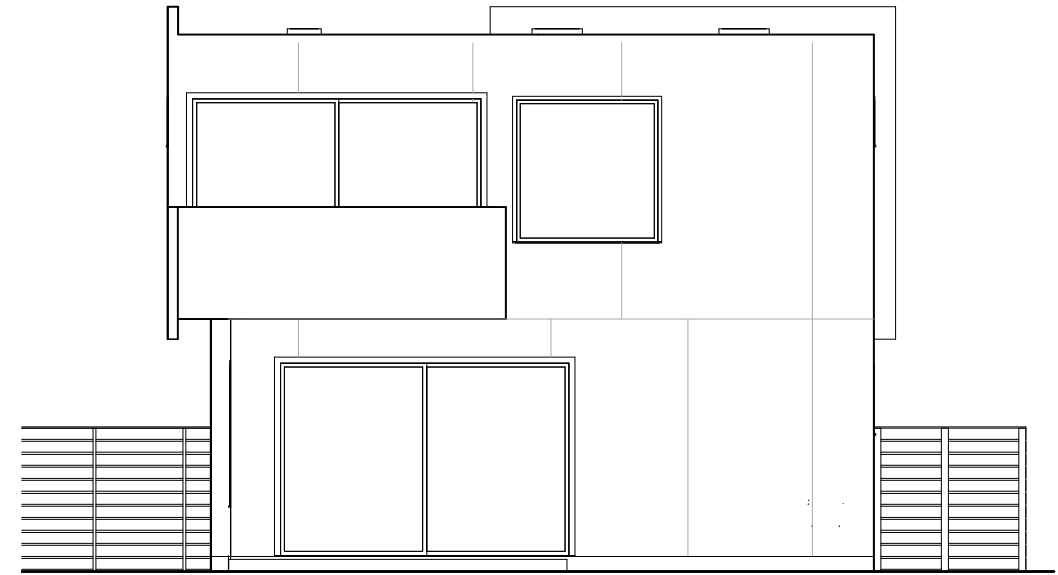


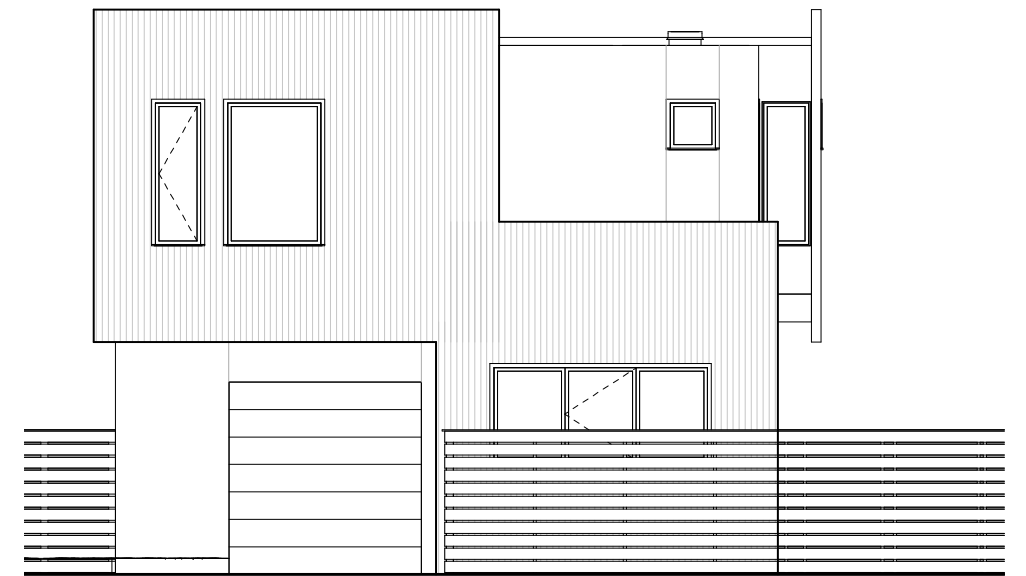
④ 1696 16TH ST. - NORTH EXTERIOR
ELEVATION
1/4" = 1'-0"



② 1696 16TH ST. - EAST EXTERIOR
ELEVATION
1/4" = 1'-0"



① 1696 16TH ST. - SOUTH EXTERIOR
ELEVATION
1/4" = 1'-0"



③ 1696 16TH ST. - WEST EXTERIOR
ELEVATION
1/4" = 1'-0"