

- GENERAL NOTES**
1. THIS DRAWING IS THE COPYRIGHT OF SWIFT ENGINEERING LTD AND MUST NOT BE RETAINED, COPIED OR USED WITHOUT THE ABOVE'S AUTHORITY.
 2. DO NOT SCALE FROM THE DRAWINGS.
 3. ALL DIMENSIONS ARE IN MILLIMETRES AND LEVELS IN METRES UNLESS NOTED OTHERWISE.
 4. THIS DRAWING SHOULD BE READ IN CONJUNCTION WITH OTHER RELEVANT DRAWINGS AND DOCUMENTS



EXISTING RAILING

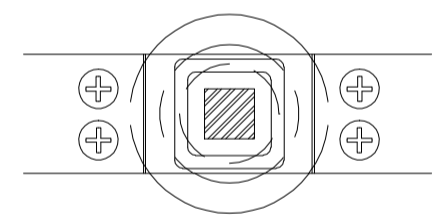
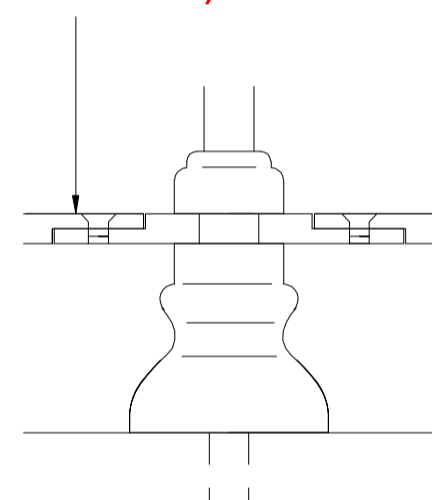


EXISTING POST BASE

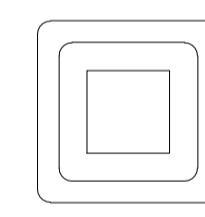
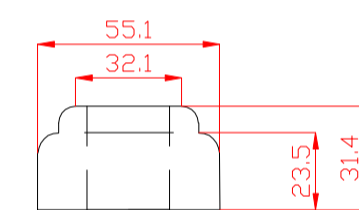


EXISTING POST HEAD

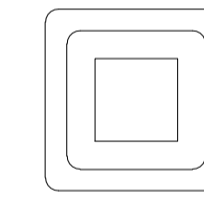
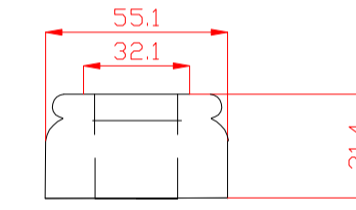
RAILING SECTIONS BOLTED TO POST SECTION USING 2NO. M10 COUNTER SUNK HEX BOLTS TO TOP AND BOTTOM RAILING (SLOTTED COUNTER SUNK HOLES EVERY 25M)



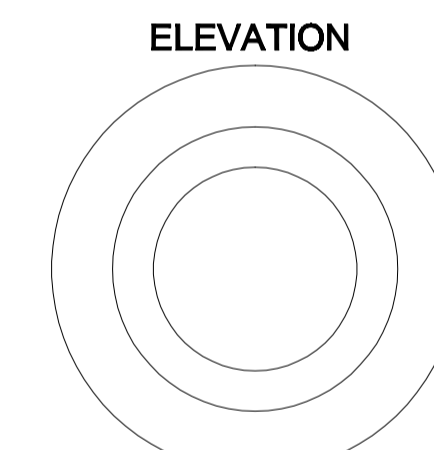
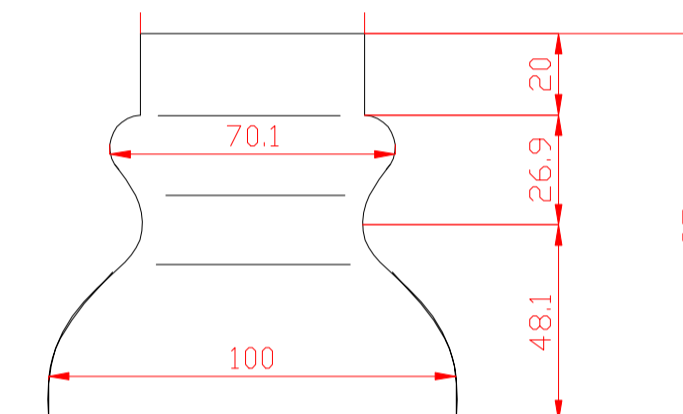
POST CONNECTOR DETAIL



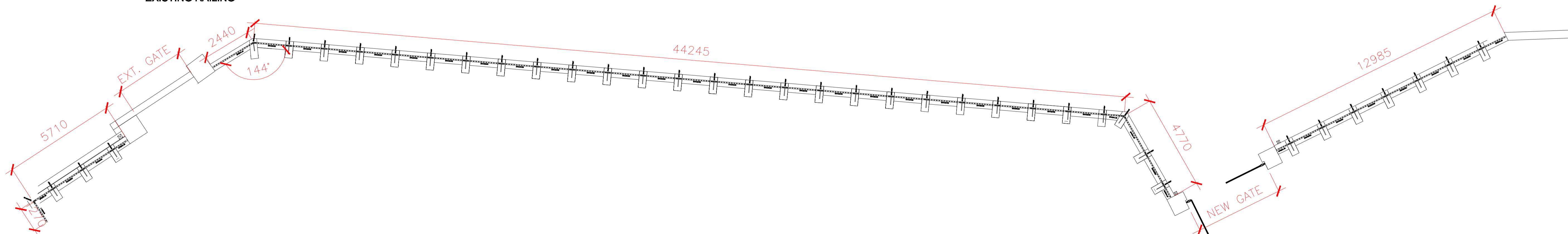
PROPOSED BOTTOM RAIL COLLAR (SAMPLE TO BE APPROVED)



PROPOSED TOP RAIL COLLAR (SAMPLE TO BE APPROVED)



PROPOSED BASE (SAMPLE TO BE APPROVED)



ALL MATERIAL MILD STEEL GALVANISED AND POWDER COATED/PAINTED TO RAL 7022 - SAMPLE OF RAILING TO BE APPROVED PRIOR TO FABRICATION

Designed by A.J. B.	Checked by	Approved by	Job No K - 100	Date 10.06.14	Scale NTS
			PROPOSED BOUNDARY RAIL		
			Rathgorey Dunleer Co. Louth P/F: 041-686380 Mob: 086 312 91	PEOPLES PARK DUN LAOGHAIRE	Revision B