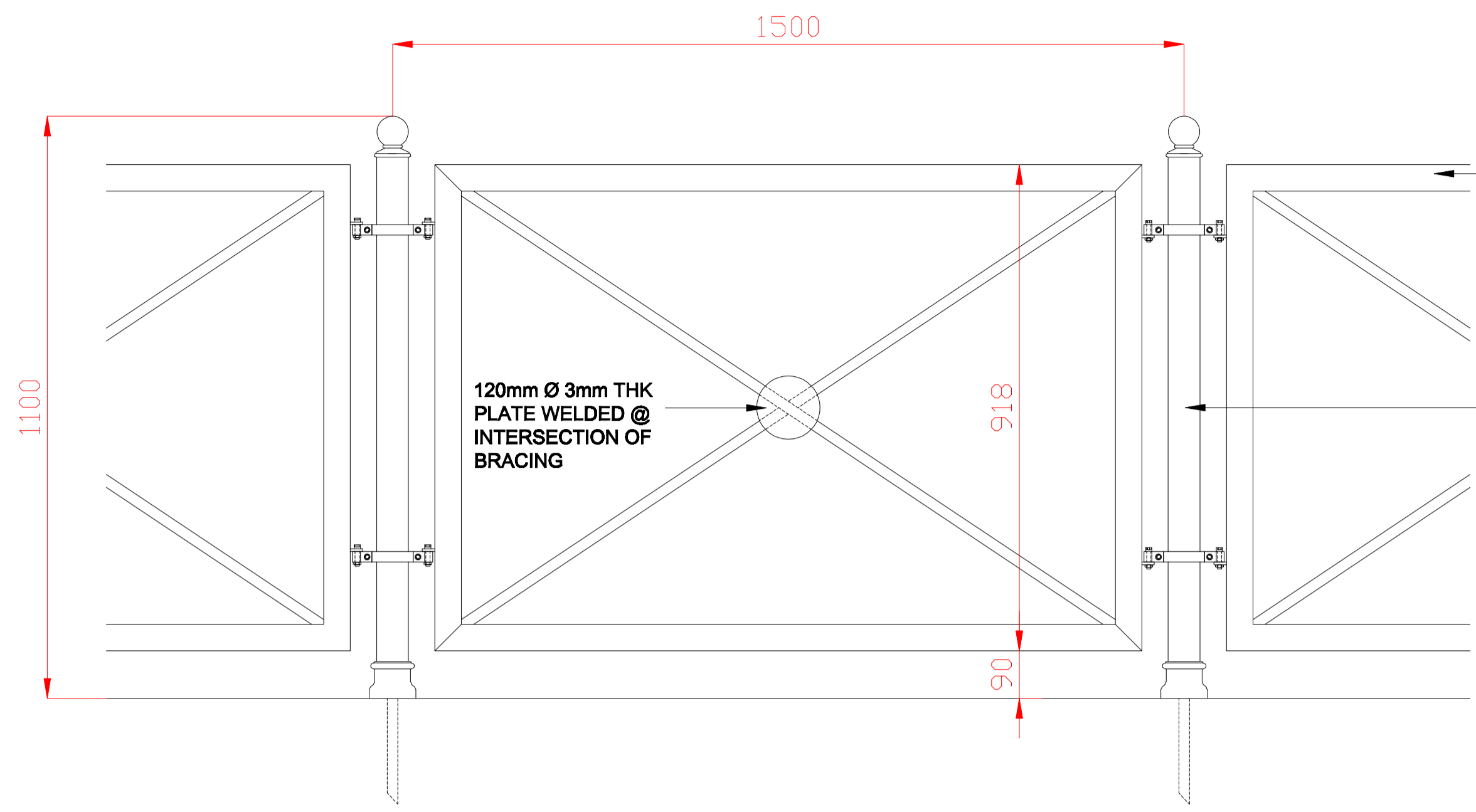


**GENERAL NOTES**

1. THIS DRAWING IS THE COPYRIGHT OF SWIFT ENGINEERING LTD AND MUST NOT BE RETAINED, COPIED OR USED WITHOUT THE ABOVE AUTHORITY.
2. DO NOT SCALE FROM THE DRAWINGS.
3. ALL DIMENSIONS ARE IN MILLIMETRES AND LEVELS IN METRES UNLESS NOTED OTHERWISE.
4. THIS DRAWING SHOULD BE READ IN CONJUNCTION WITH OTHER RELEVANT DRAWINGS AND DOCUMENTS



PROPOSED ELEVATION

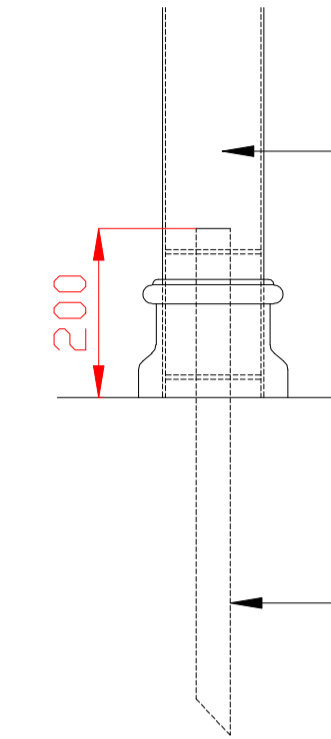
50x30 RHS FRAME WITH 20mm SQ DIAGONAL BRACING. ALL WELDS GROUND DOWN AND FLUSH FINISHED

120mm Ø 3mm THK PLATE WELDED @ INTERSECTION OF BRACING

60mmØ POST WITH CUSTOMISED BRACKETS SIMILAR TO EXIST RAILING ON SITE

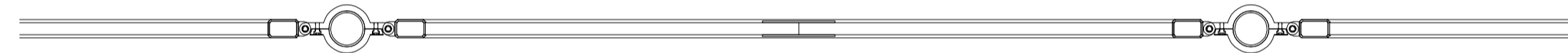


EXISTING



PROPOSED

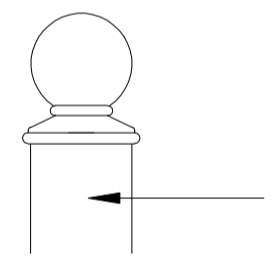
POST BASE DETAIL



PROPOSED PLAN



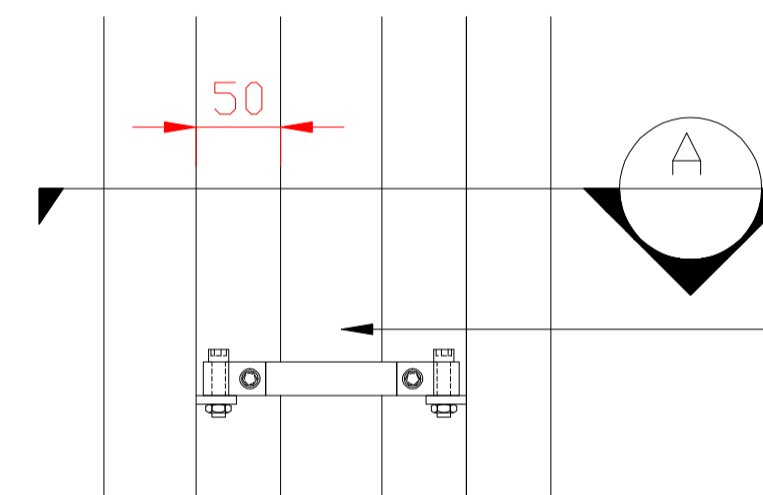
EXISTING



PROPOSED

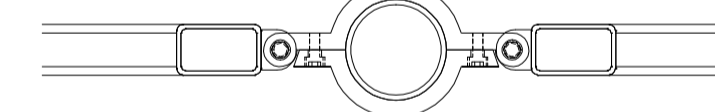
60mmØ POST WITH CUSTOMISED HEAD COVER SIMILAR TO RAILING ON SITE

POST HEAD DETAIL



60mmØ POST WITH CUSTOMISED BRACKETS SIMILAR TO EXIST RAILING ON SITE

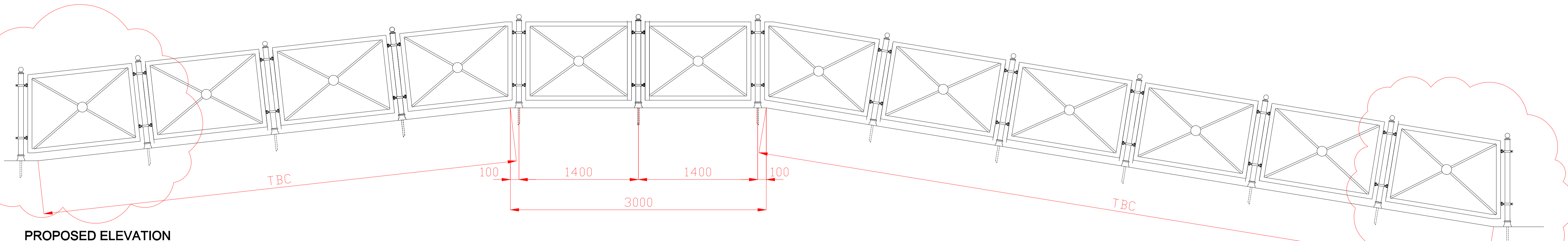
CLAMP DETAIL



A~A



EXISTING



PROPOSED ELEVATION

ALL MATERIAL MILD STEEL. GALVANISED AND POWDER COATED TO RAL 7043

Designed by A.J. B.	Checked by	Approved by	Job No K - 100	Date 10.06.14	Scale NTS
			Rathgorey Dunleer Co. Louth P/F: 041-6863809 Mob: 086 312 9975		
PEDESTRIAN GUARD RAIL			Revision B	Sheet 2	
PEOPLES PARK DUN LAOGHAIRE					