

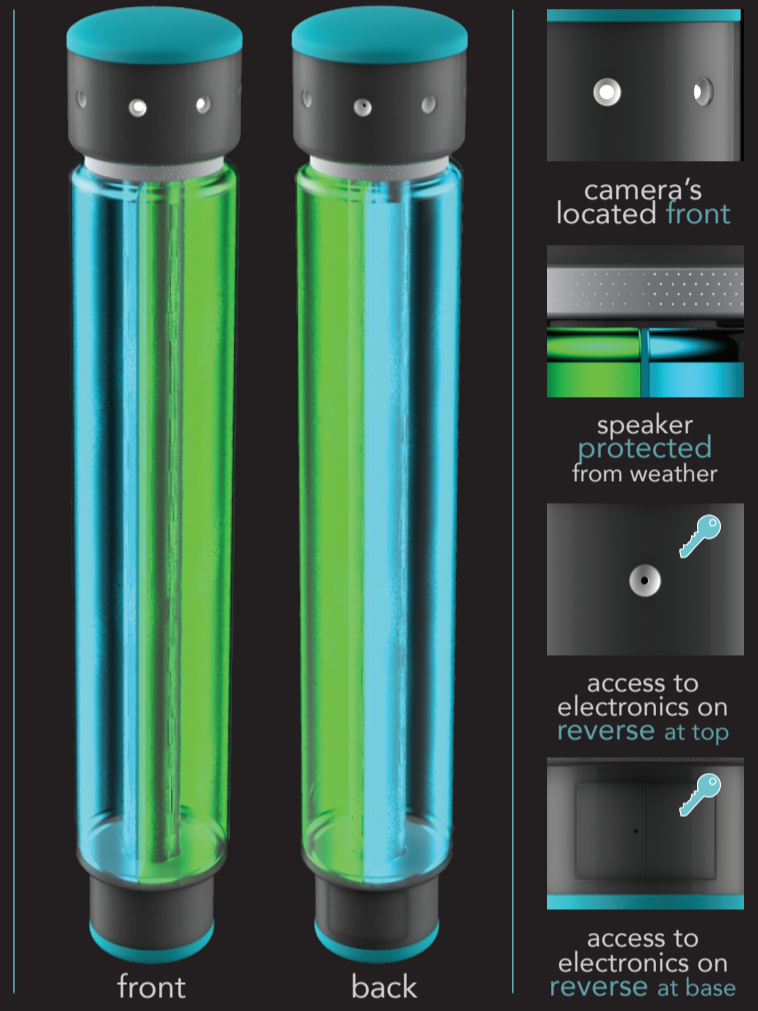
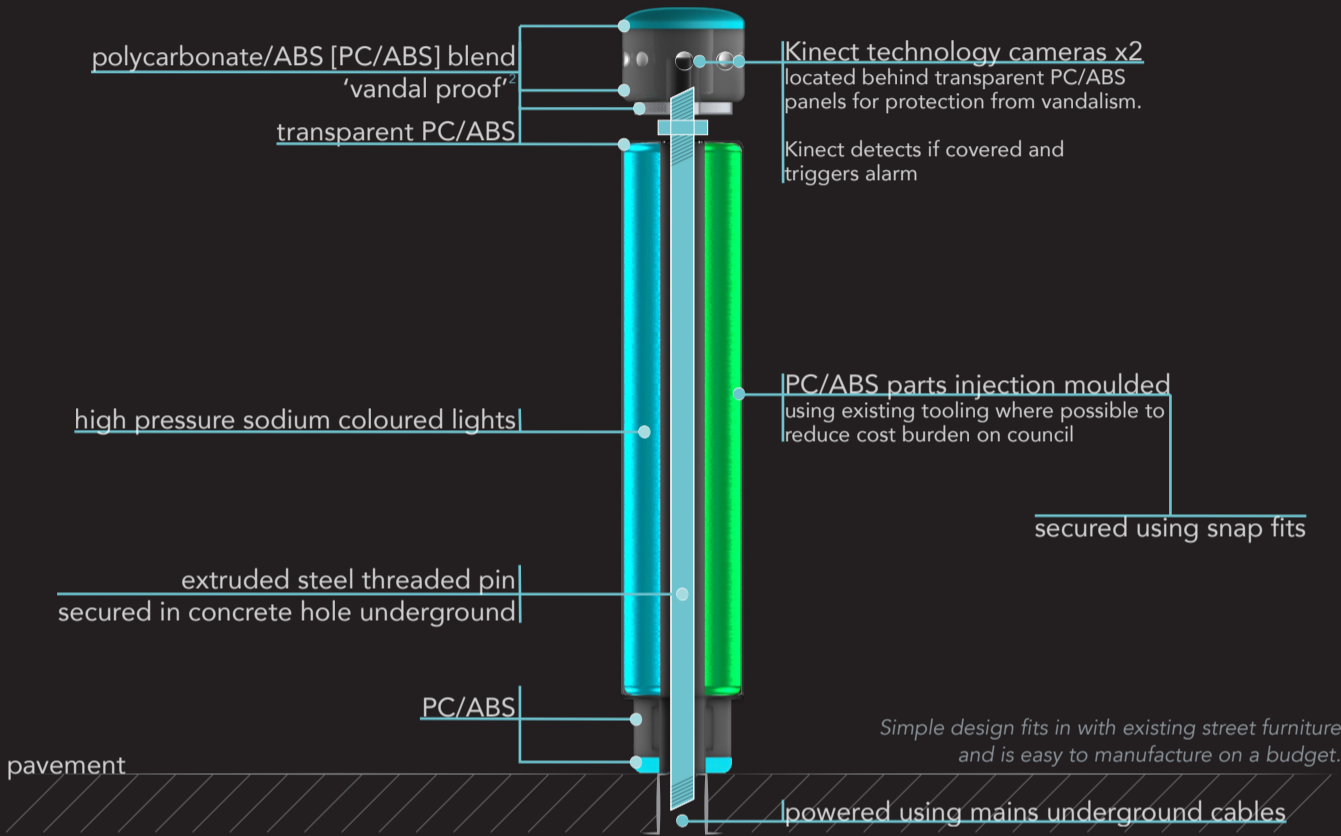
# 04 DESIGN

BRIEF Design a way to encourage harmony on public transport after hours.



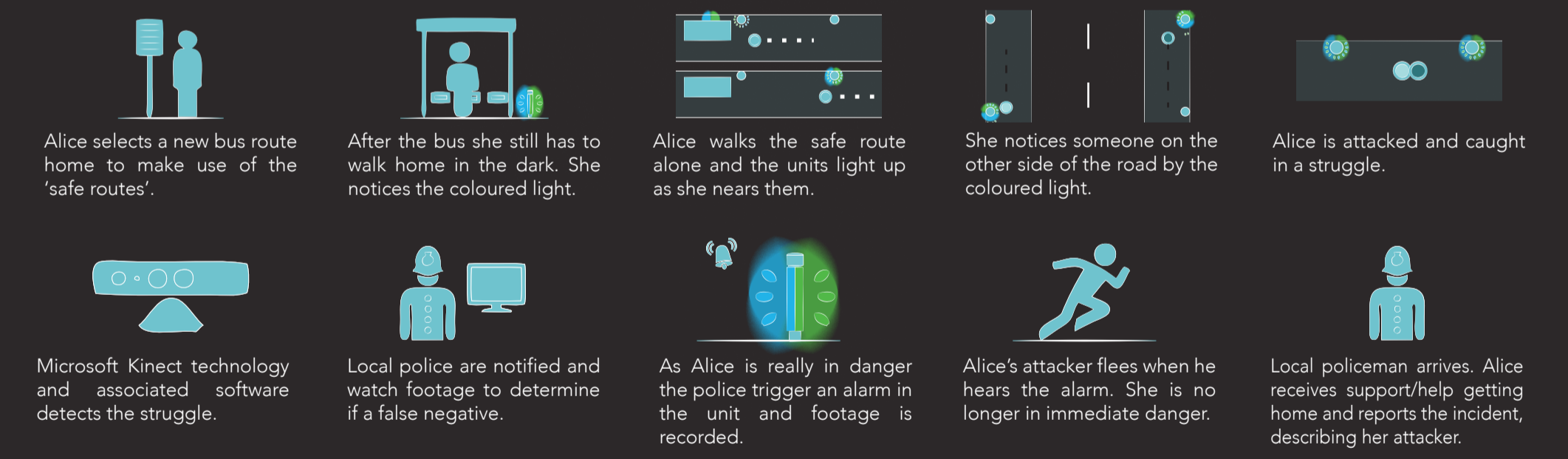
## DESIGN PROPOSAL

Alongside training, 'light tracking units' will be placed at intervals along the pavement on dedicated safe routes. These units will provide calming light triggered by the users presence and provide advanced CCTV functions.



## STORYBOARD OF USE

'Safe routes' determined by assessing areas with highest crimes and most common routes used late at night using crime reports from [www.police.uk](http://www.police.uk).



Following the incident the perpetrator can be tracked and then convicted thanks to the footage recorded of the incident using the Kinect technology and Alice's testimony at the time.

## TECHNOLOGY REQUIRED

Microsoft's Xbox One Kinect technology proves viability but future developments required to reduce cost and improve functionality. Existing functions are as follows:

