

HILARY MARDAS INTERIOR DESIGN



# nature & science center

thousand oaks, california

Located centrally in Thousand Oaks, California, The Nature and Science Center is a two-story 50,000 square foot building. Visitors are welcomed into the backdrop of the Santa Monica Mountains National Park. The convenient urban/suburban setting allows for driving, biking, and walking to the facility.

The Santa Monica Mountains National Recreation Area is part of the Mediterranean Coast Network that includes Channel Islands National Park and Cabrillo National Monument. Together, these parks protect some of the most significant examples of terrestrial Mediterranean-type ecosystems and coastal marine environments anywhere in the world. The climate of the Mediterranean ecosystem along with the diverse topography in the Santa Monica Mountains has created a landscape filled with unique natural resources. Over 1,000 plant species provide habitat for approximately 500 mammal, bird, reptile, and amphibian species.

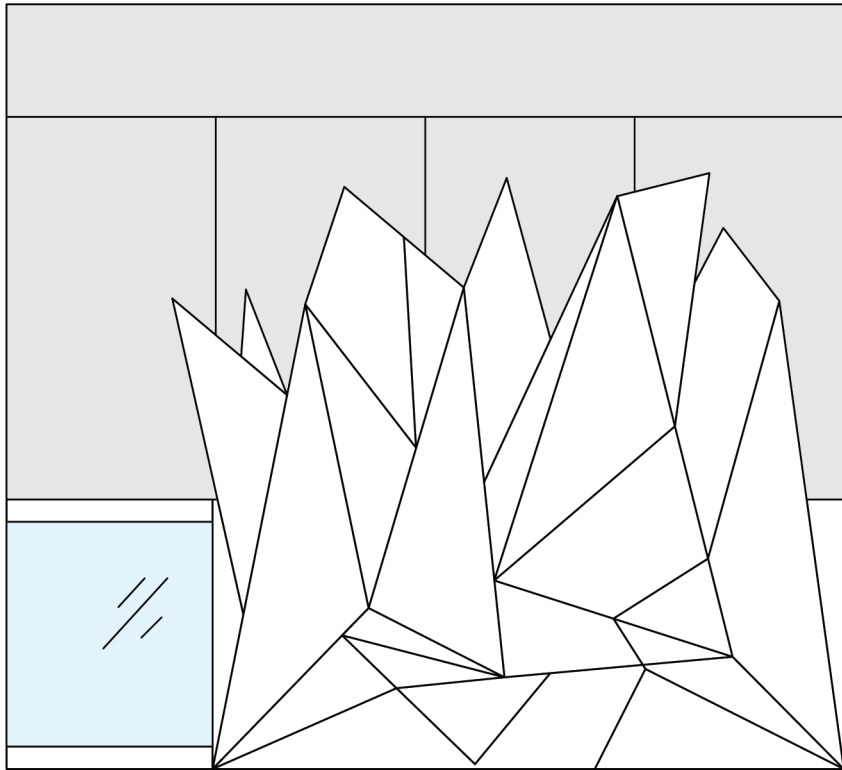


Sustainability goals will be met by incorporating:  
Recycled and Sustainable Building Materials  
Native Landscaping  
Water Conservation (low-flow fixtures)  
Off-grid power and water

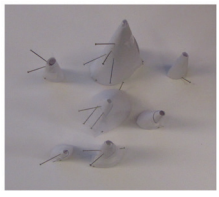
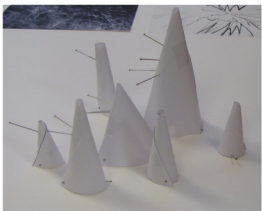
The Design of the Nature and Science Center has two goals: To create a strong connection to the outside, and be environmentally sustainable.





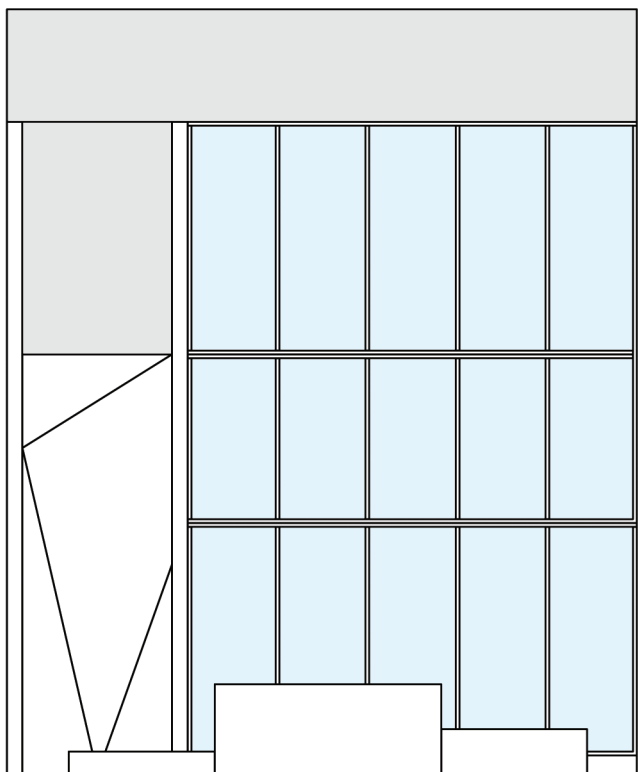
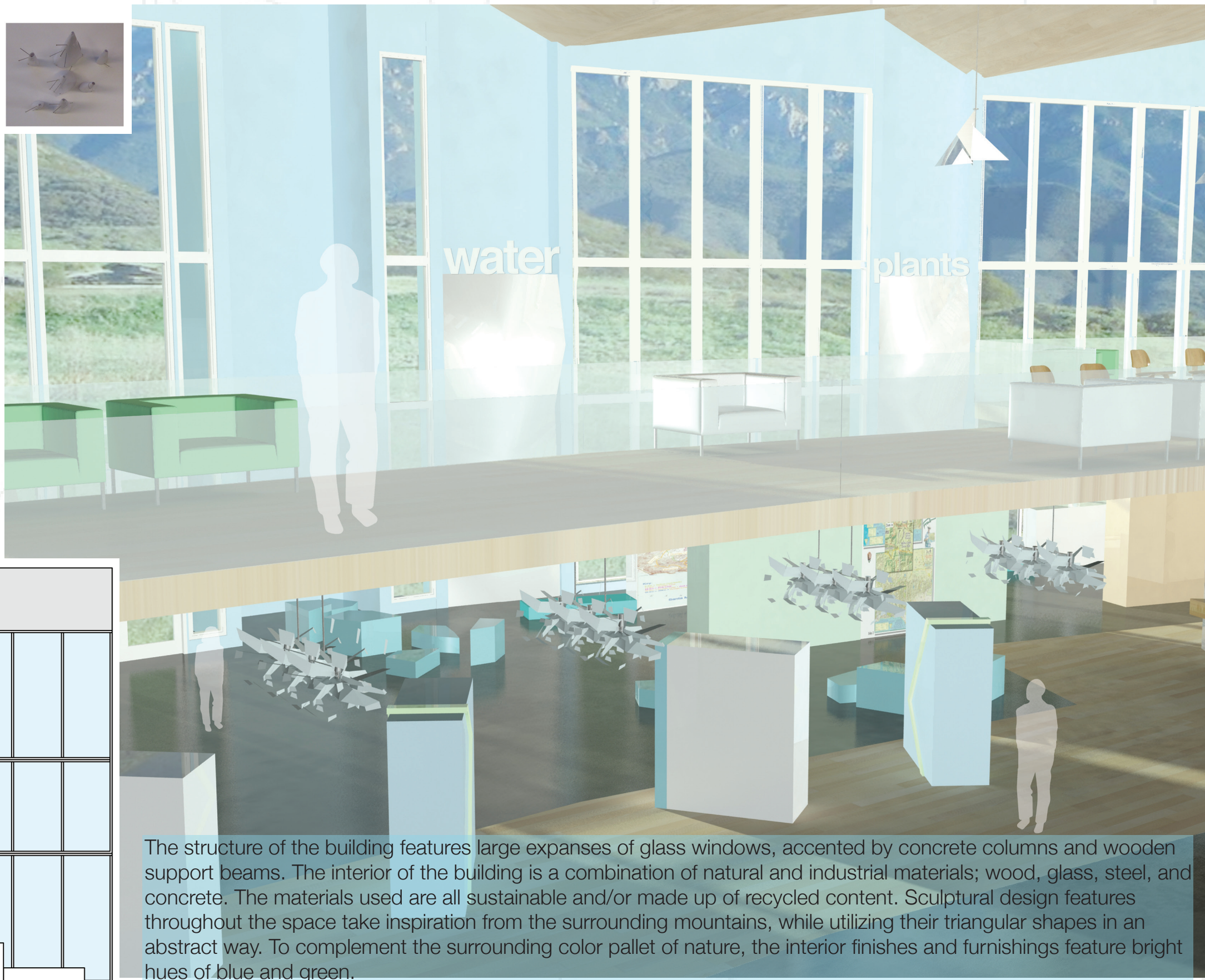


Contemporary, Custom designed, and Classic Modern furniture pieces furnish all spaces.



## conceptual design exersise

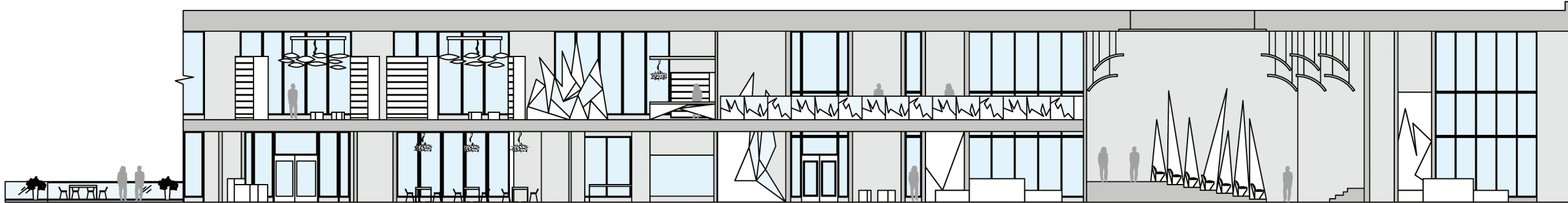
I took an image of cracked glass and translated it into a three-dimensional model, using paper and metal pins. The model captured the triangular shapes I saw in the image. Through further design development (cutting, folding, taping and glueing paper), the model evolved into a sculptural design element present in the Nature & Science Center. The grand scale and form of the sculptures evoke a similarity to the surrounding mountains.



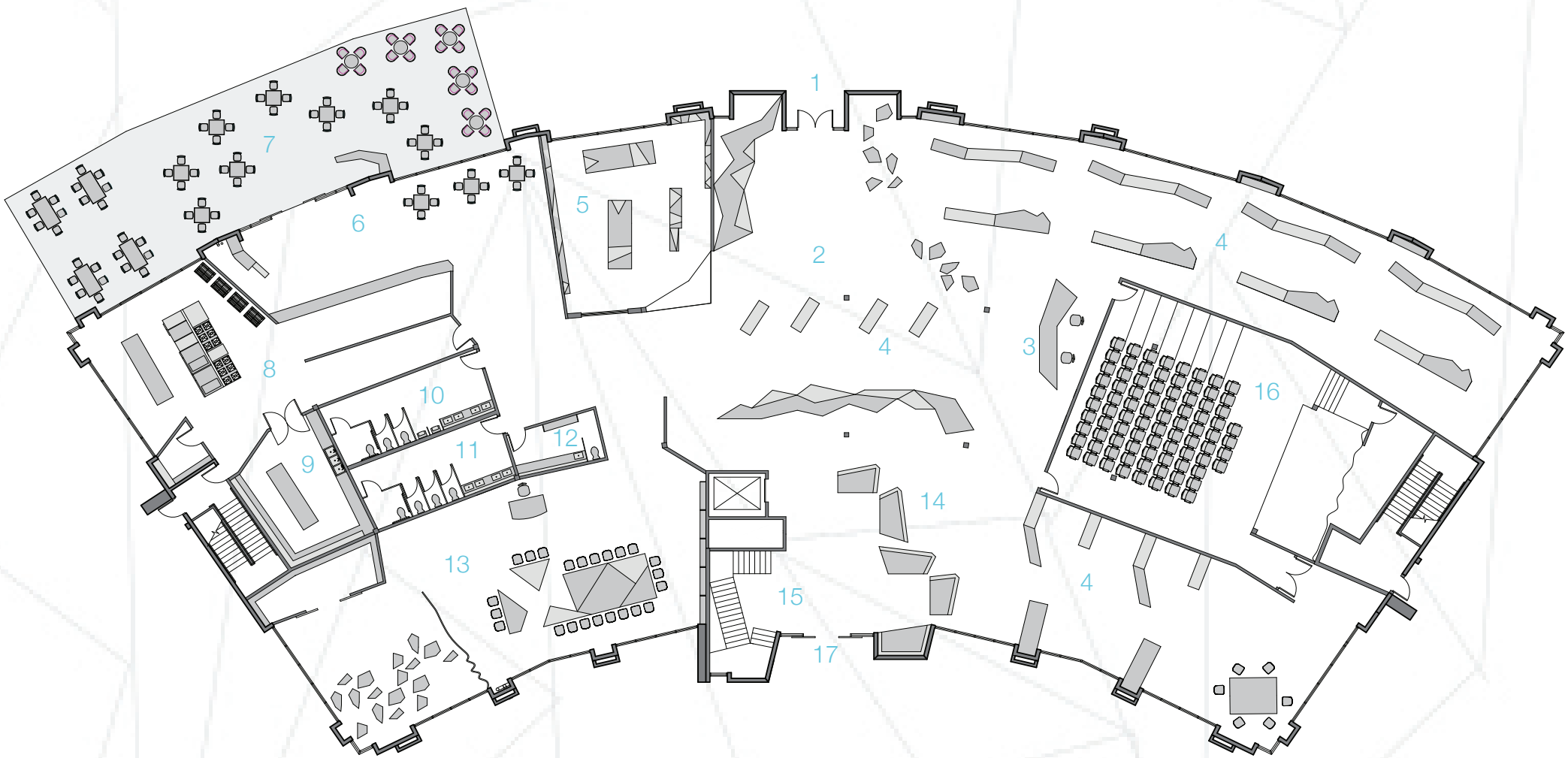
The structure of the building features large expanses of glass windows, accented by concrete columns and wooden support beams. The interior of the building is a combination of natural and industrial materials; wood, glass, steel, and concrete. The materials used are all sustainable and/or made up of recycled content. Sculptural design features throughout the space take inspiration from the surrounding mountains, while utilizing their triangular shapes in an abstract way. To complement the surrounding color pallet of nature, the interior finishes and furnishings feature bright hues of blue and green.



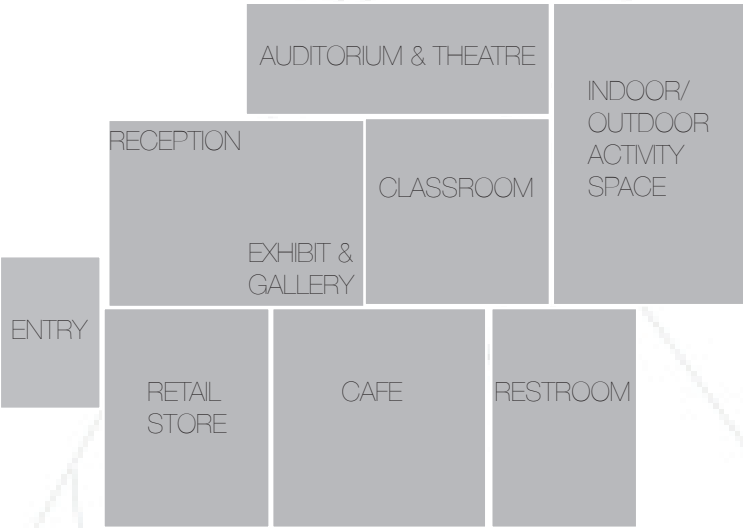
building section



first floor



- 1 main entry
- 2 lobby
- 3 information desk
- 4 exhibit displays
- 5 museum book/gift store
- 6 cafe
- 7 outdoor cafe seating
- 8 kitchen
- 9 restaurant storage
- 10 men's restroom
- 11 women's restroom
- 12 family restroom
- 13 classrooms
- 14 waiting/meeting area
- 15 main stair/elevator to second floor
- 16 theatre
- 17 back entry/exit



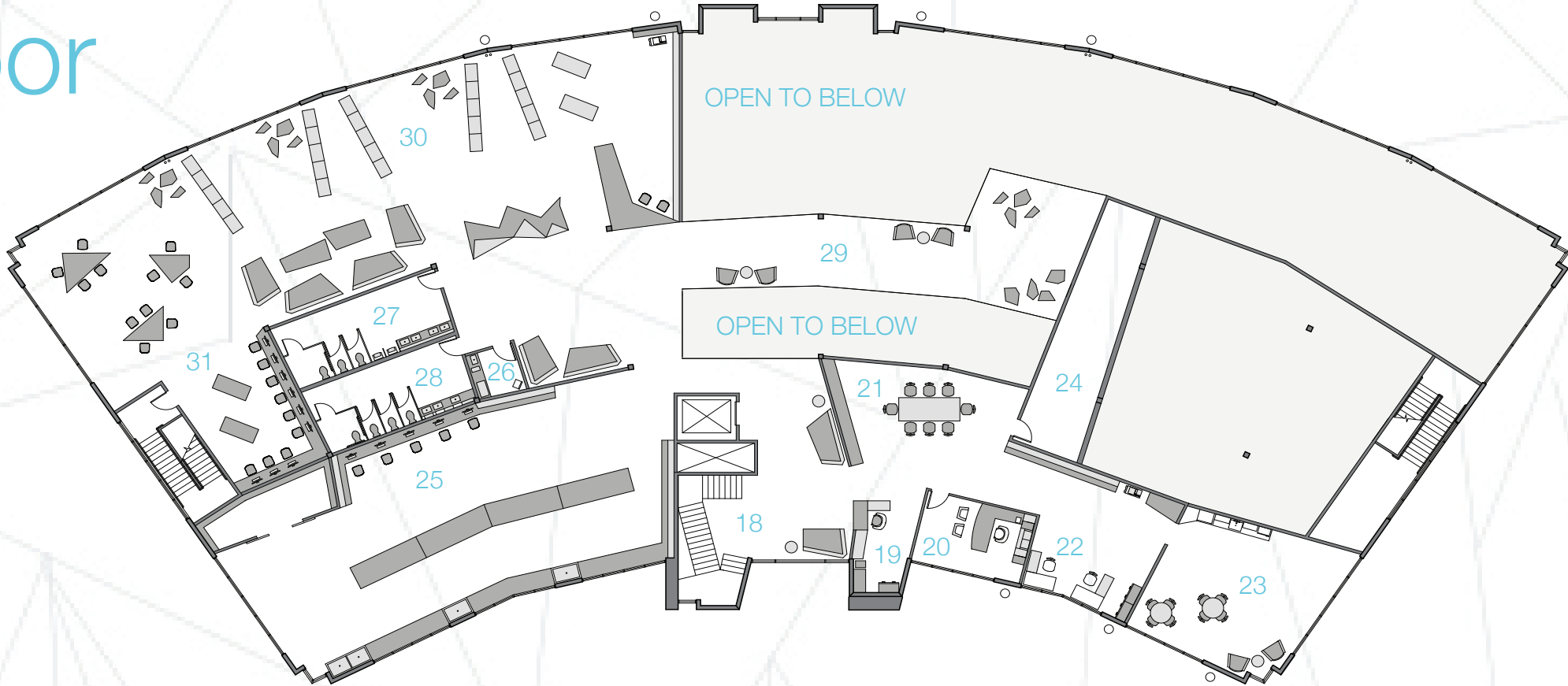
space adjacency diagram  
first floor

a center for research, exploration and conservation  
wildlife, plant life, ecology, & geology  
serving the Santa Monica Mountains National Park



# second floor

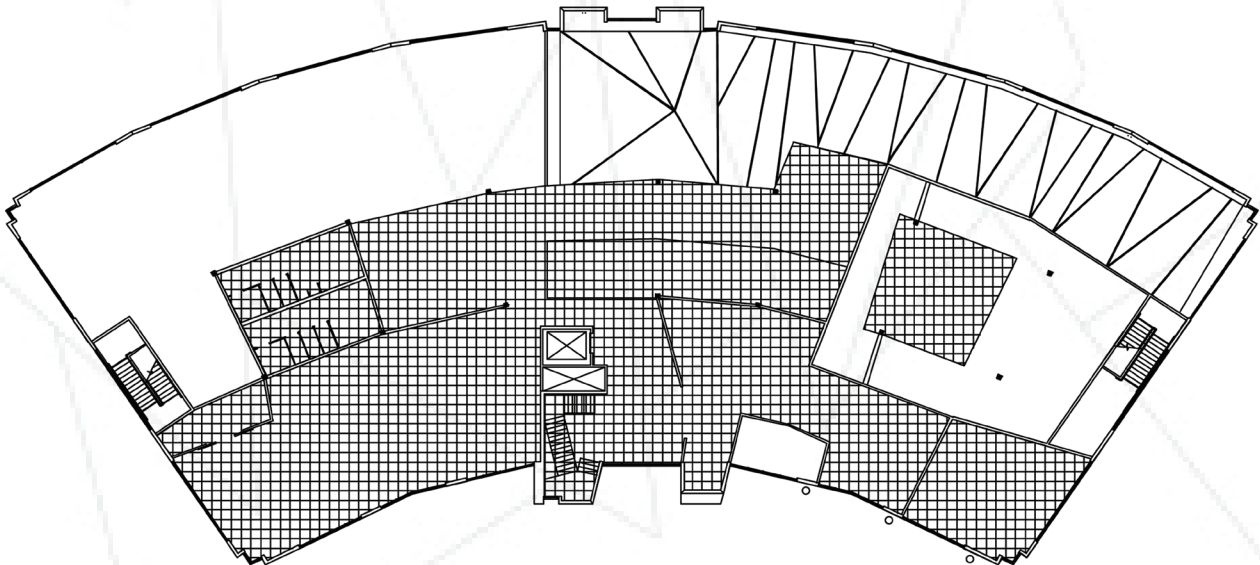
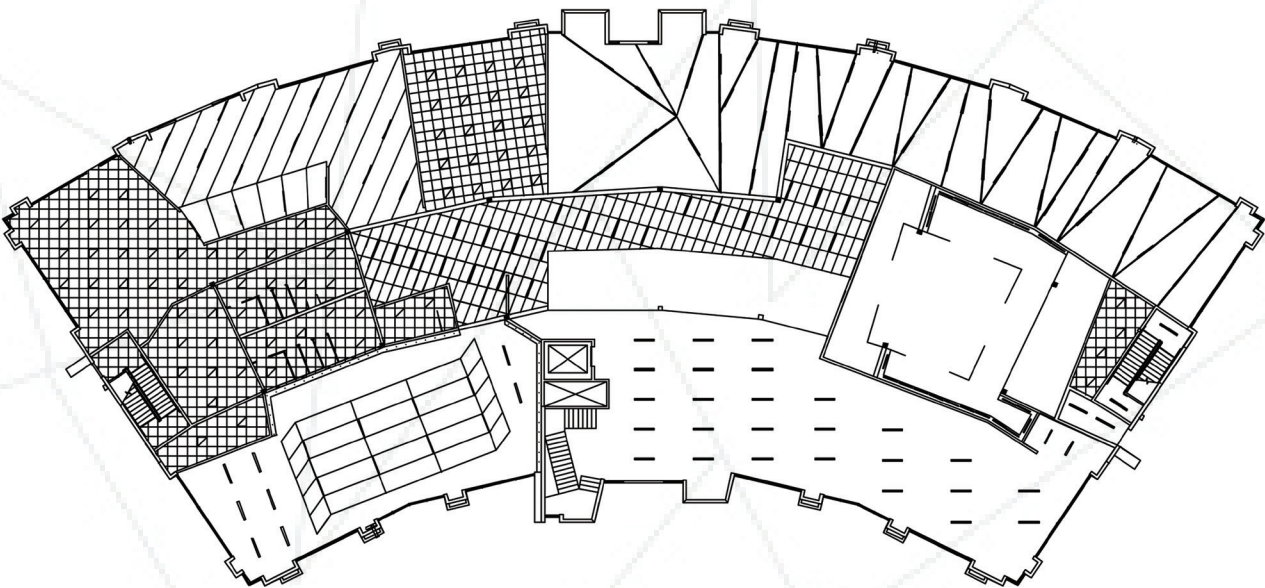
- 18 main stair/elevator to first floor
- 19 assistant manager's office
- 20 manager's office
- 21 employee conference
- 22 office spaces
- 23 employee lounge
- 24 equipment control room
- 25 laboratory & research
- 26 family changing room
- 27 men's restroom
- 28 women's restroom
- 29 sitting area
- 30 reference library
- 31 computer stations



space adjacency diagram  
second floor



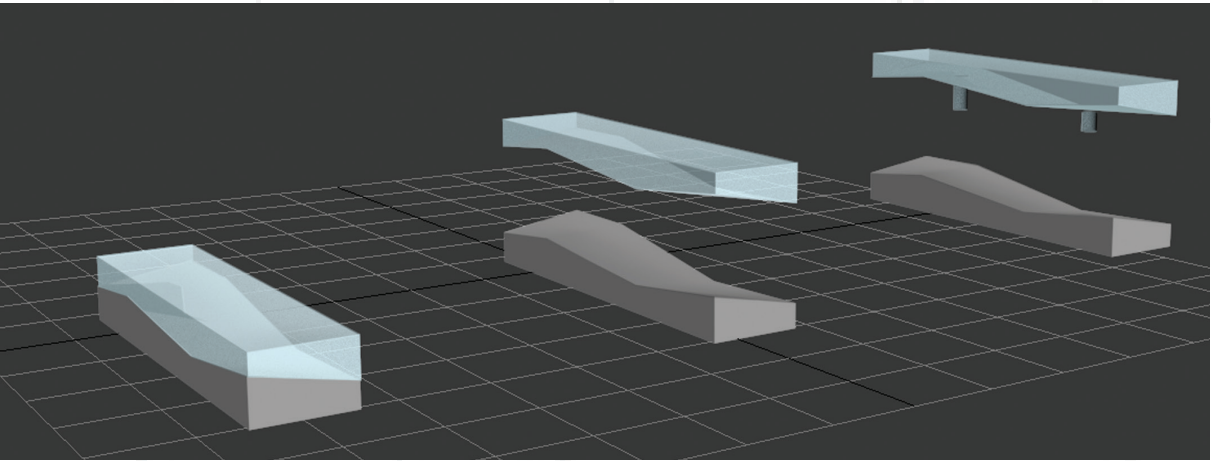
# reflected ceiling plans



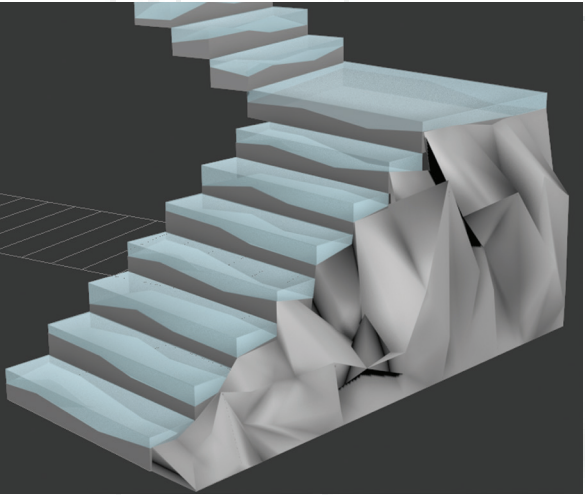
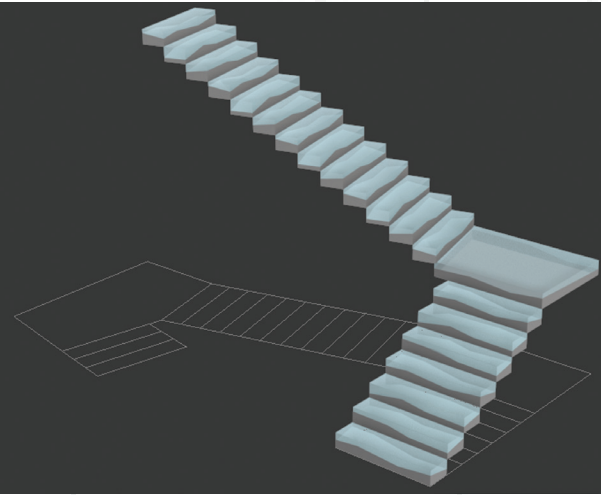


# custom stair design

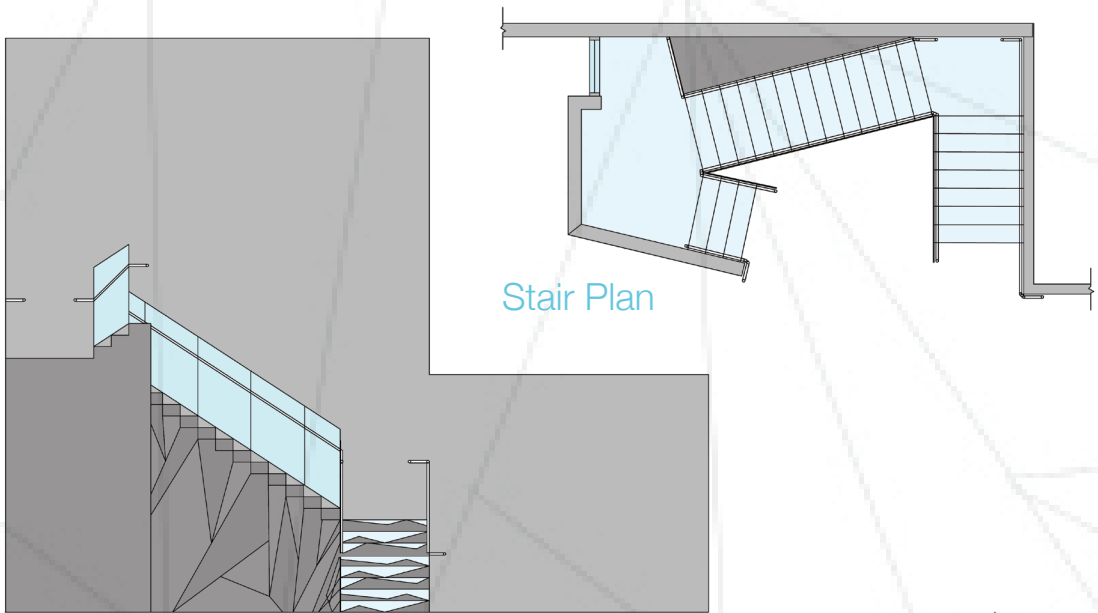
The main stairway in the Nature & Science center is a completely custom design. Poured concrete and cast glass compose each tread of the stair.



3D Studio Max conceptual renderings



## guardrail construction detail



Stair Elevation

NEOPRENE GASKET TO CUSHION GLASS GUARDRAIL PANEL

GLASS FASTENED TO BRACKET WITH 1/4" METAL SCREW

BRACKET FASTENED TO STAIR TREAD WITH 1/4" METAL SCREW

STEEL BRACKET

COMPLETE BRACKET SYSTEM

