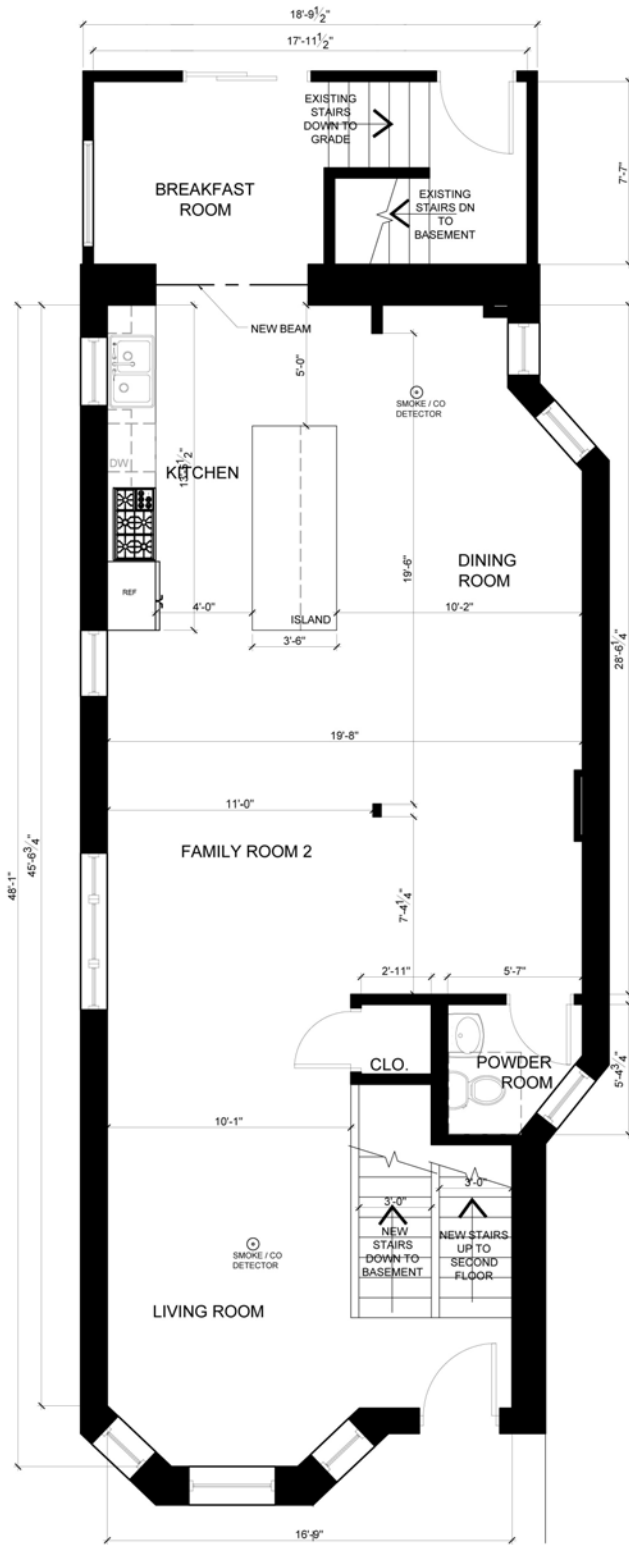


First Floor Plan

- Large open floor plan
- New hardwood floors
- Open staircase to Basement and Second floor
- Huge Kitchen with Breakfast nook
- Kitchen features: white maple cabinets, stainless steel appliances, quartz counters
- Beautiful designer lighting
- Mudroom storage space
- Lovely natural light
- *Floor to ceiling pantry cabinets (optional)*
- *Wood Deck (optional)*



3256 W. Potomac Avenue
Chicago, IL 60651



KK Goh 312-569-0010