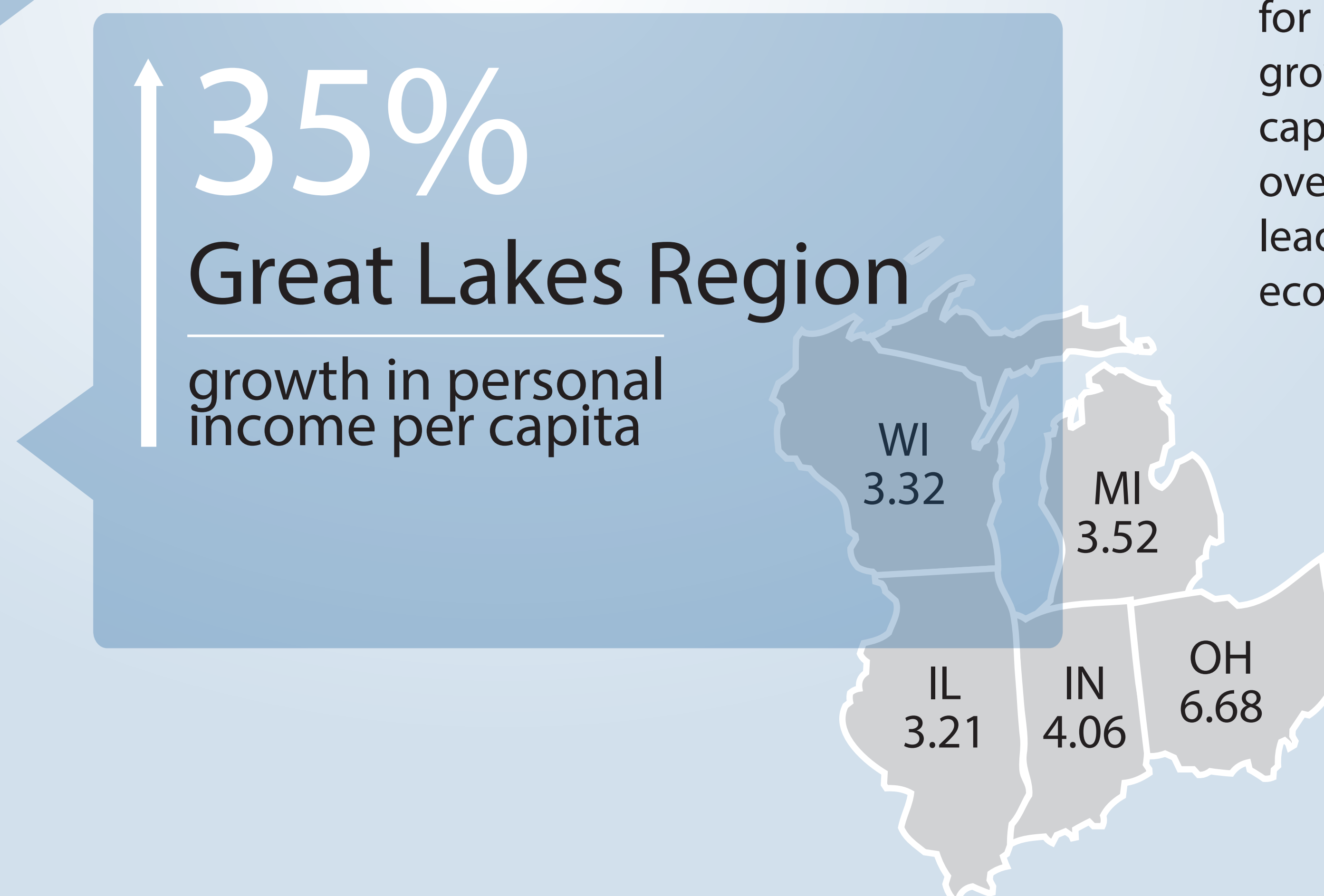
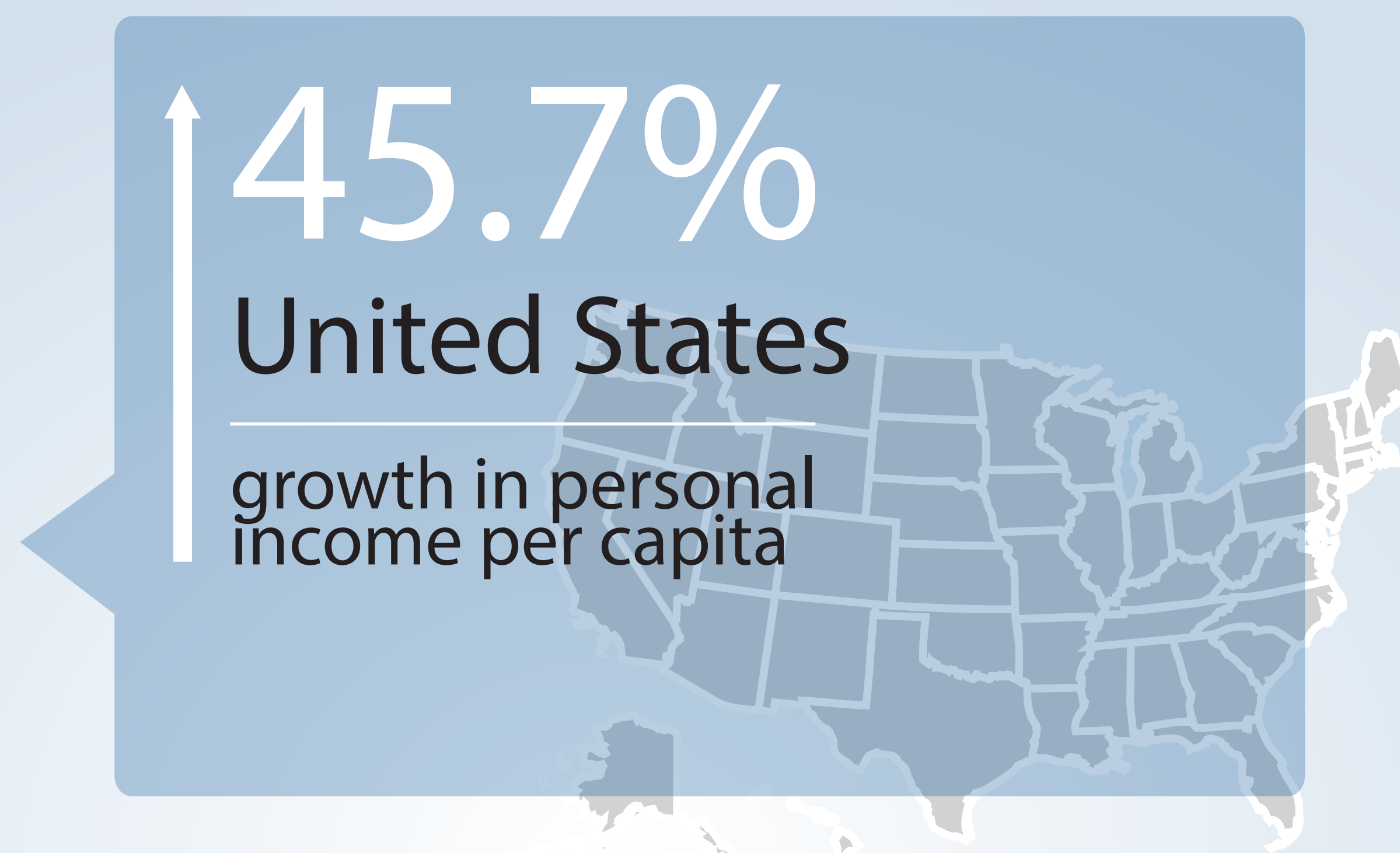
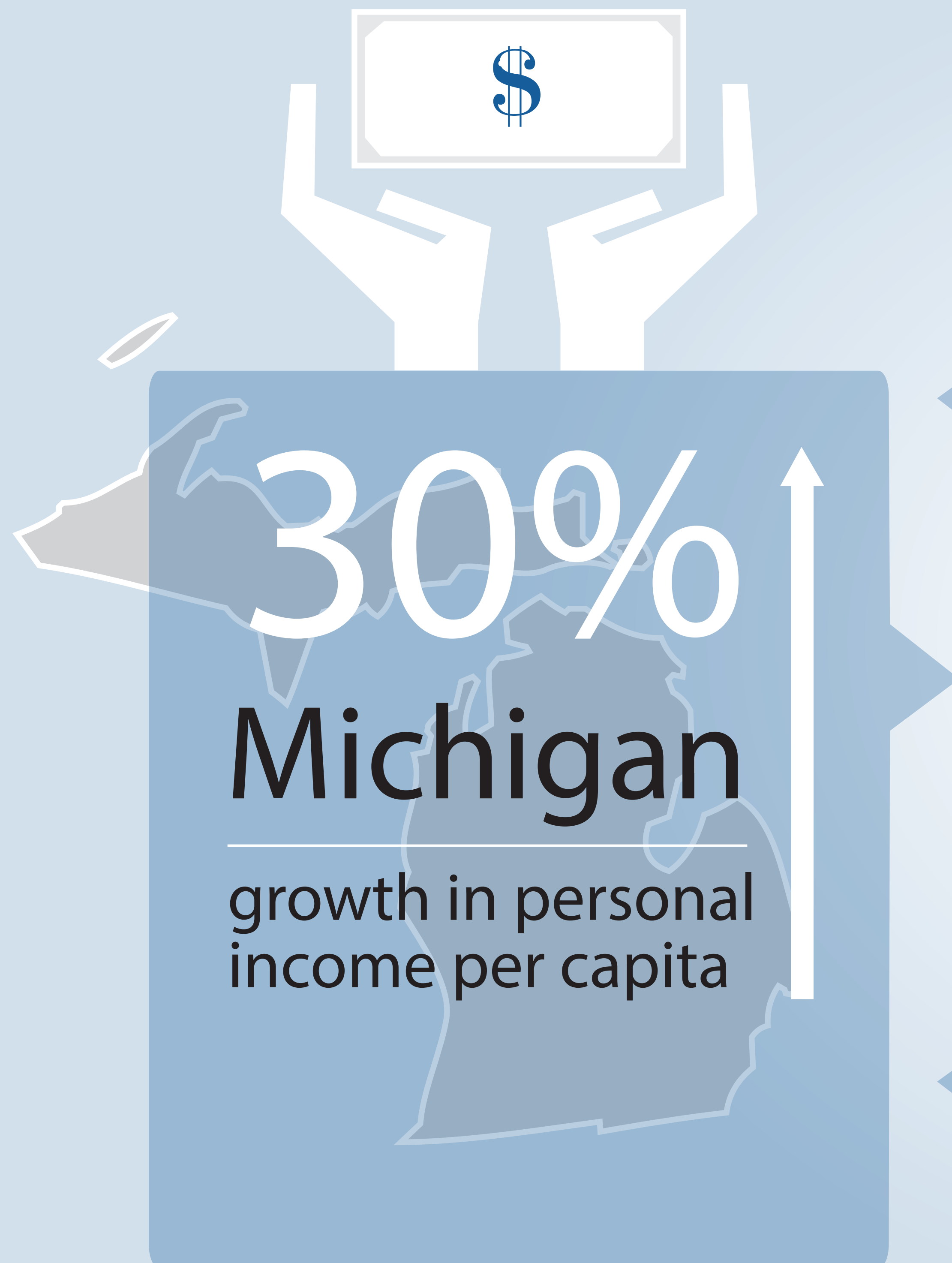


Growth in Personal Income

2000-2013



Personal income per capita growth in Michigan grew 30% from 2000-2013 while the U.S. average income grew at 45.7% over the same period. Personal income growth over the period grew at just under 49% in RTW states, at 43.2% in NRTW states, and 35% in the Great Lakes region. Also of note, Michigan did not lead the Great Lakes region from 2010-2013 or the national average for per capita personal income growth. However, increasing per capita income growth in Michigan over the last few years is still a leading indicator of a strengthening economy and job market.

Average Personal Income Per Capita Growth

GLR Average = 3.5%
U.S. Average = 3.95%