

# problem

To design a contemporary color museum in downtown St. Paul, MN that is accessible to all people. The space must relate to the surrounding environment and neighborhood of its existing location. The museum will house exhibits that are interactive and easily changed. Capacity for ample storage for all of the museum's needs must be incorporated into the design. In addition, the museum must be able to accommodate a wide variety of events.

To create a color museum that engages people of all ages, where people learn about and interact with color.

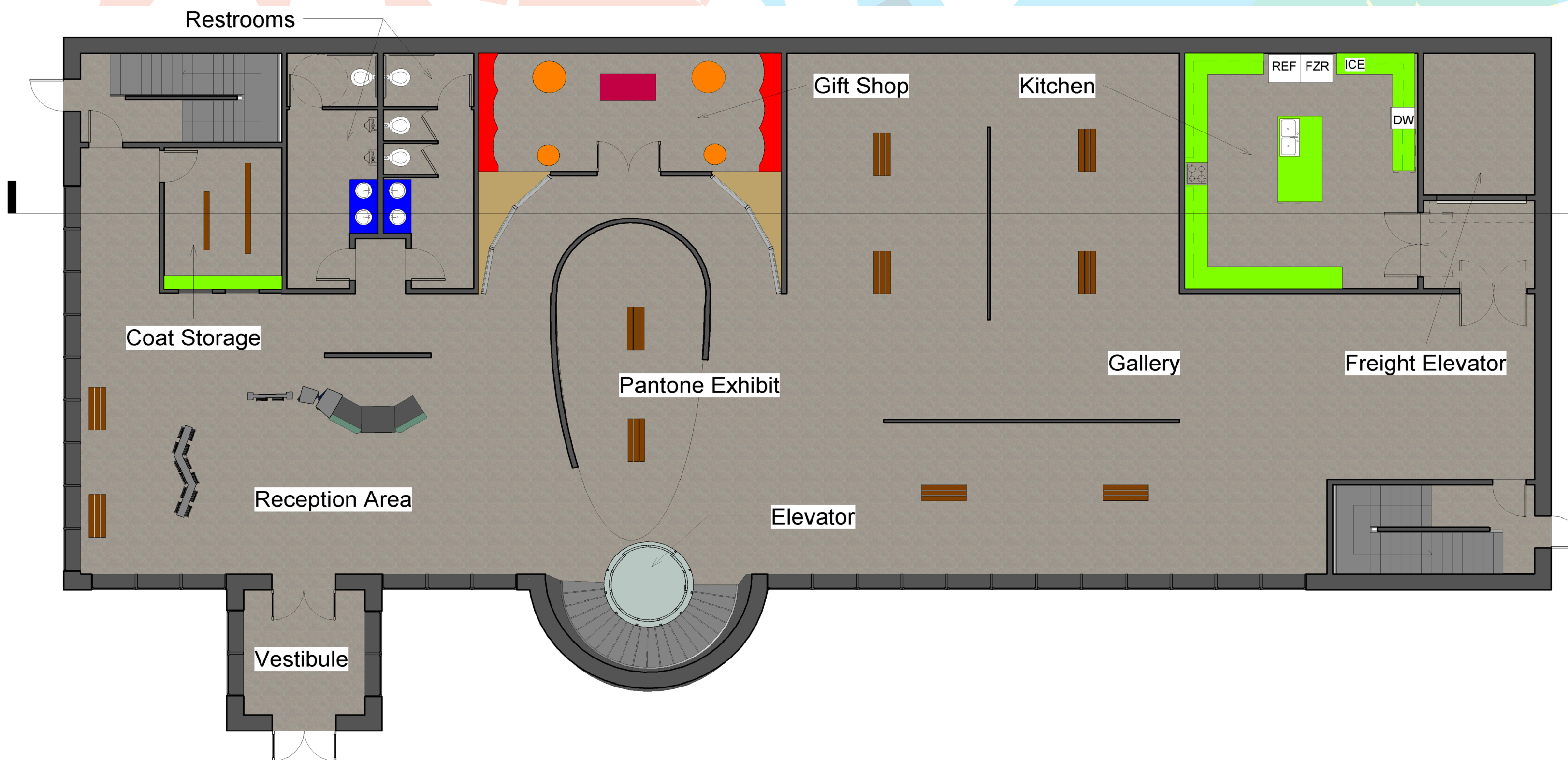
# mission

When entering the Color Museum visitors will become enriched with knowledge and appreciation of color. A sleek, contemporary space will provide the backdrop to showcase all aspects of color. Throughout the museum visitors will find repeating geometric shapes and curvilinear lines. The element of light plays an integral role providing harmony as well as helping educate visitors on color. Bright, vibrant colors will be found throughout the space to provide emphasis on exhibits. This museum will be a unique experiences allowing users to interact and become creative with color.

# concept

floor plan level 2 N^

scale: 1/8" = 1'-0"



floor plan level 1 N^

scale: 1/8" = 1'-0"



**research** Our precedent study was conducted at the Science Museum in St. Paul, neighboring the location of the Color Museum. We chose this museum because of the amount of interactive exhibits they are known for, they also have many traveling and specialty exhibits such as BodyWorld and the Omnitheatre. We recognized their use of daylighting as well as the design of their exhibits and how to make them welcoming to all users. During our research we interviewed some visitors to get a sense of how they feel in the space. Overall, their responses mainly focused on how the museum has a very family-friendly atmosphere, how they enjoy the variety of exhibits within the space, and the occasional lack of seating for interactive exhibits,



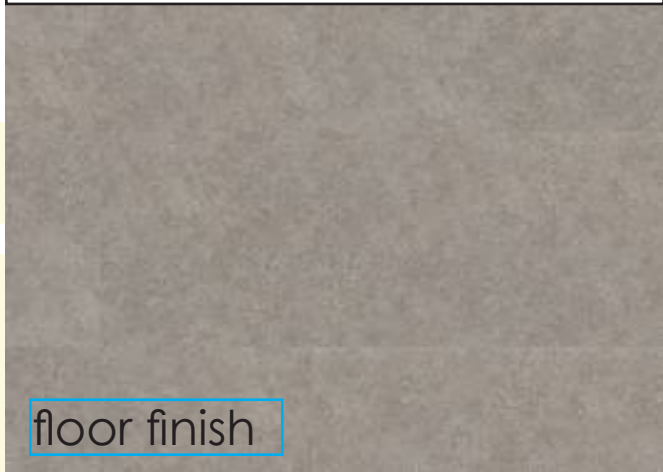
reception area



color rooms

furniture & finishes

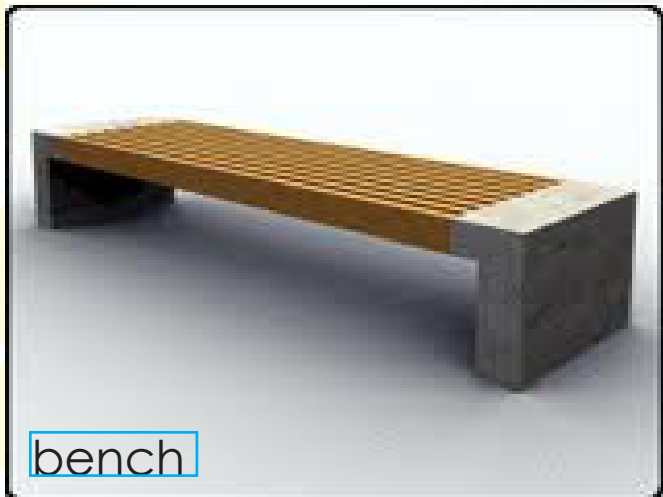
wall finish



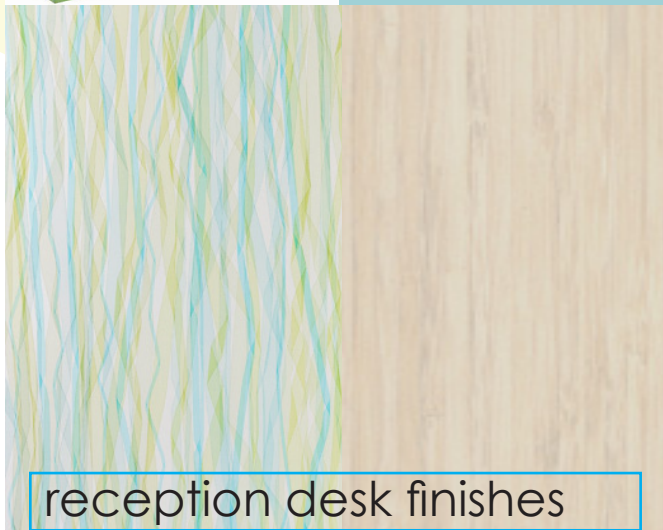
floor finish



lounge chairs



bench



reception desk finishes



section view

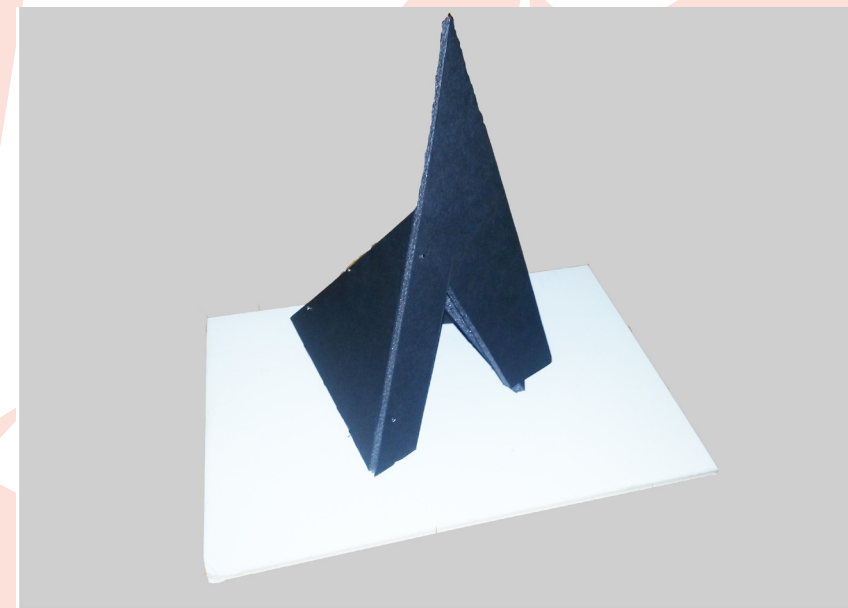
Scale: 1/8" = 1'-0"



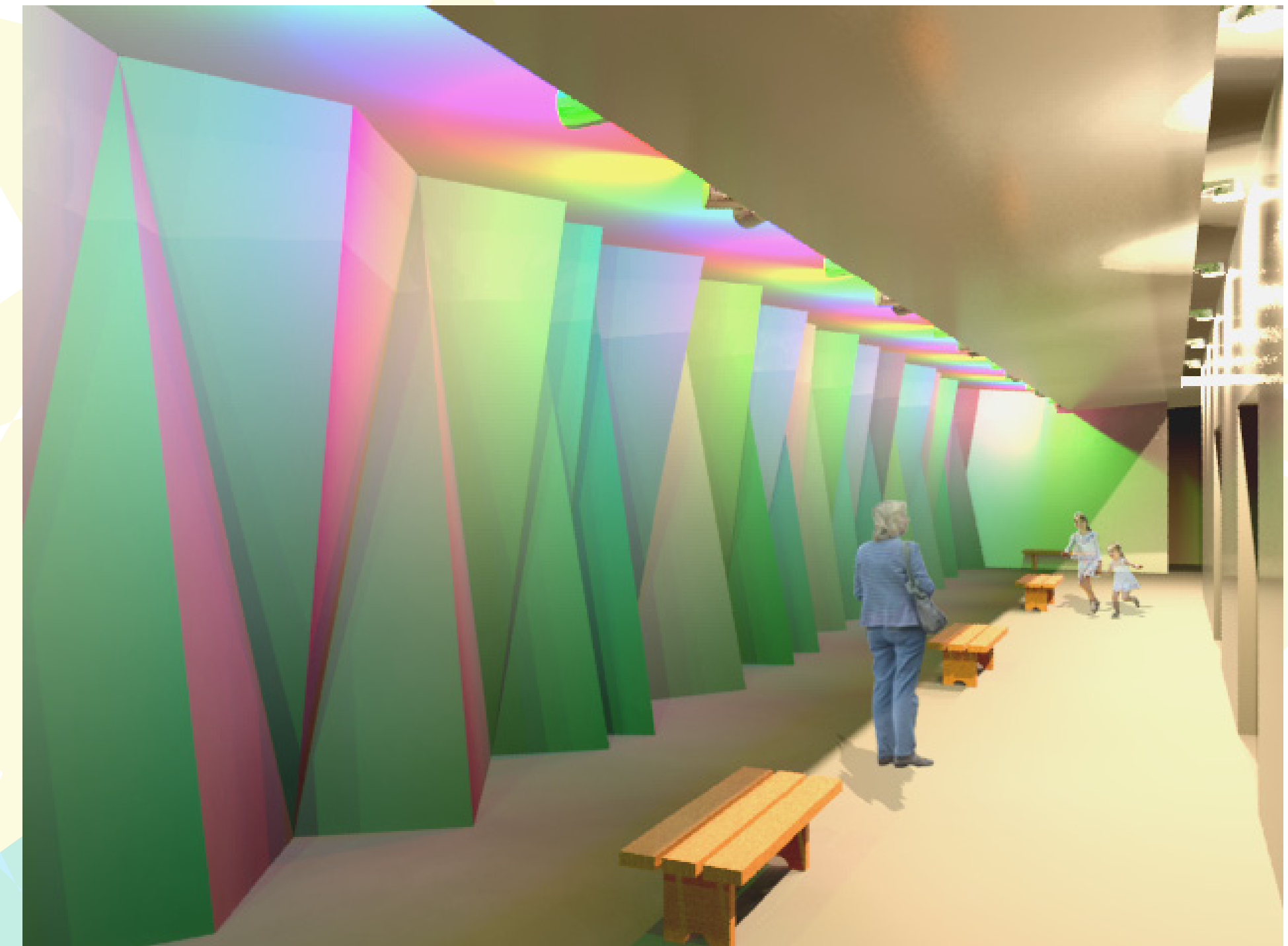
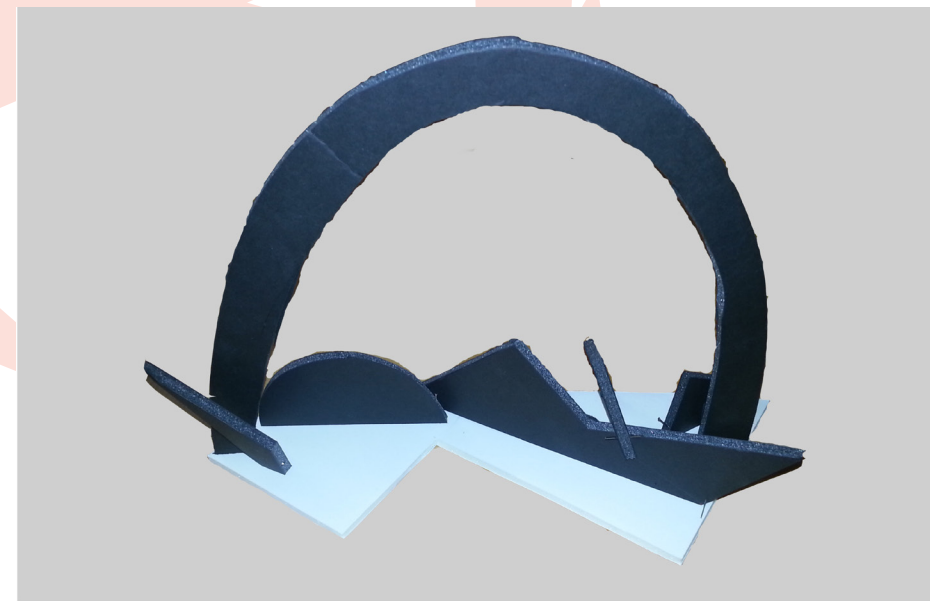
# process



concept sketch



concept models



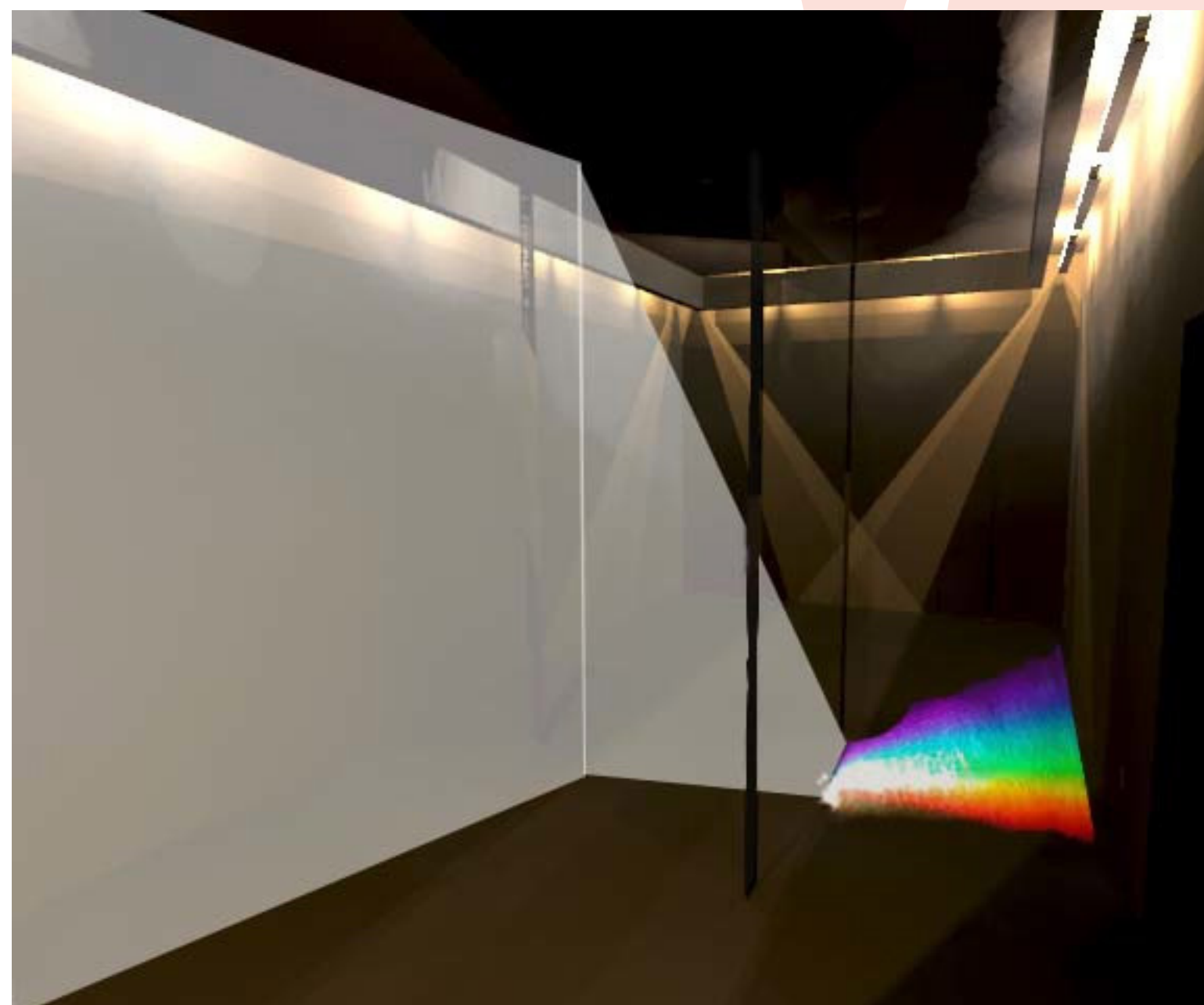
## colored hallway

### security

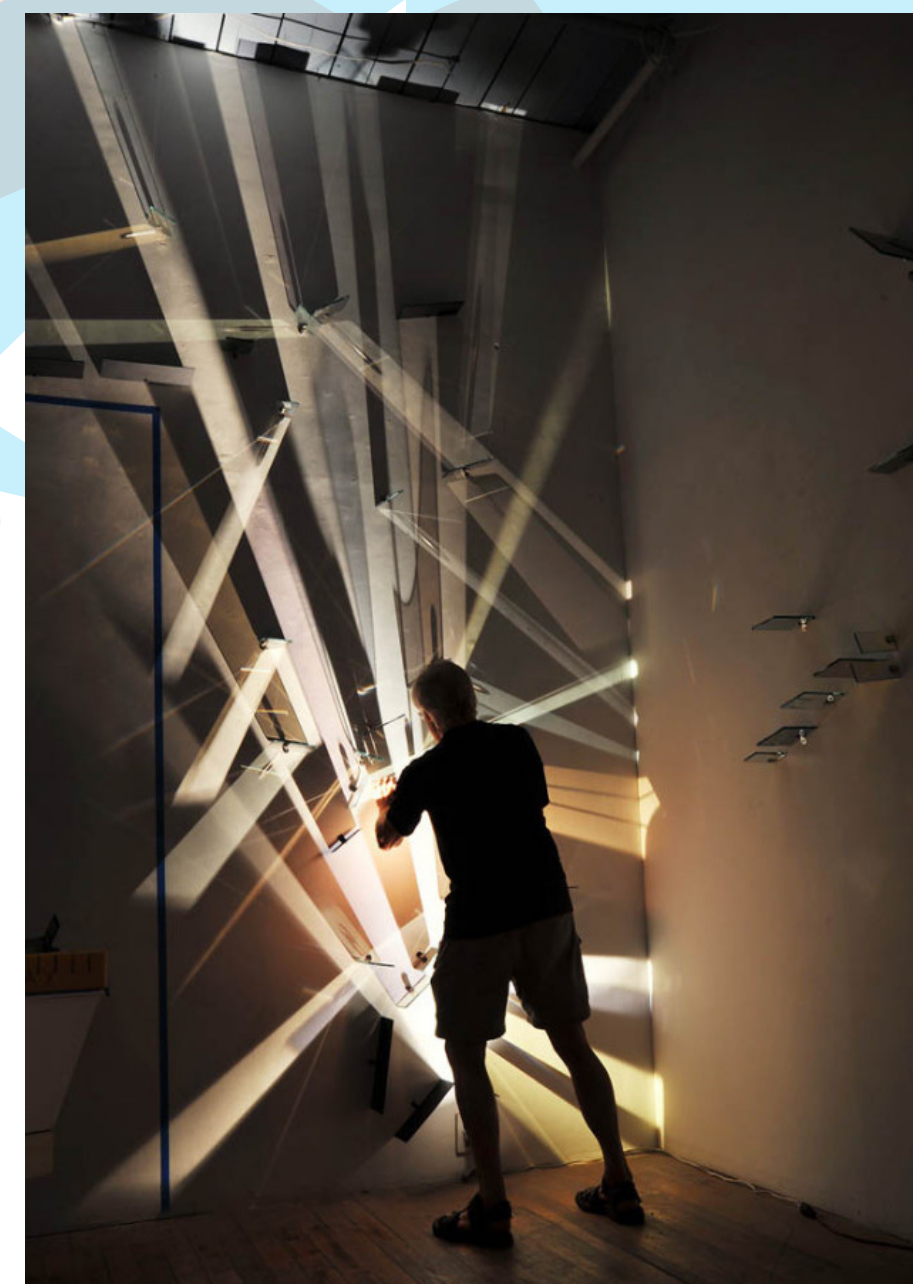
Security was another important factor in the design process. Sight lines were especially pertinent because our museum houses some valuable items. High visibility and inclusion of security cameras allow employees to maintain control over the museum. In addition, private and public areas are clearly defined to maintain privacy.

### lighting

The inclusion of light was crucial to our design process, and required conscious decisions. The color rendering index quality was the main focus for all of our lighting fixtures of the ambient and task layers.



light exhibit



art installation by Stephen Knapp

