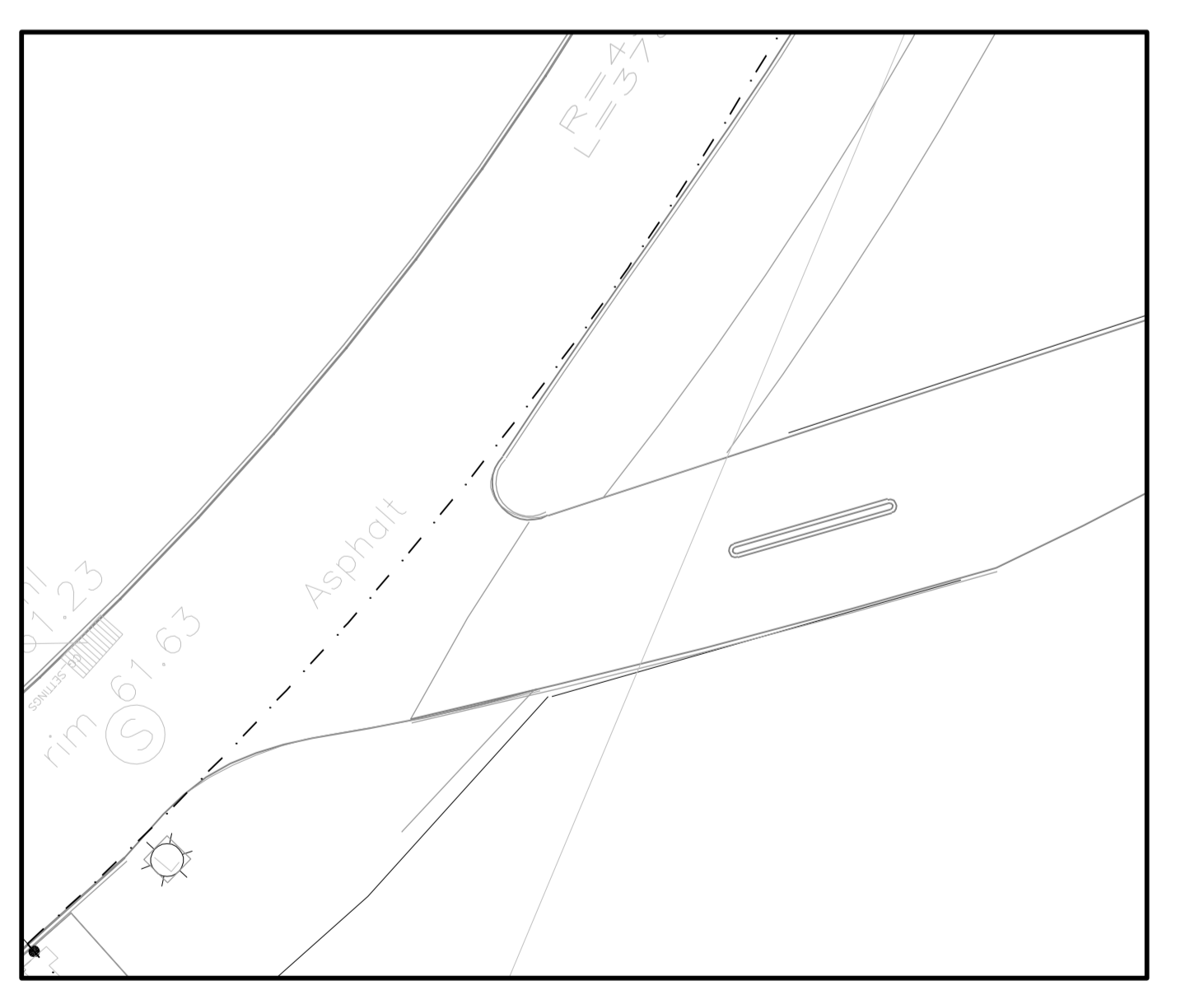
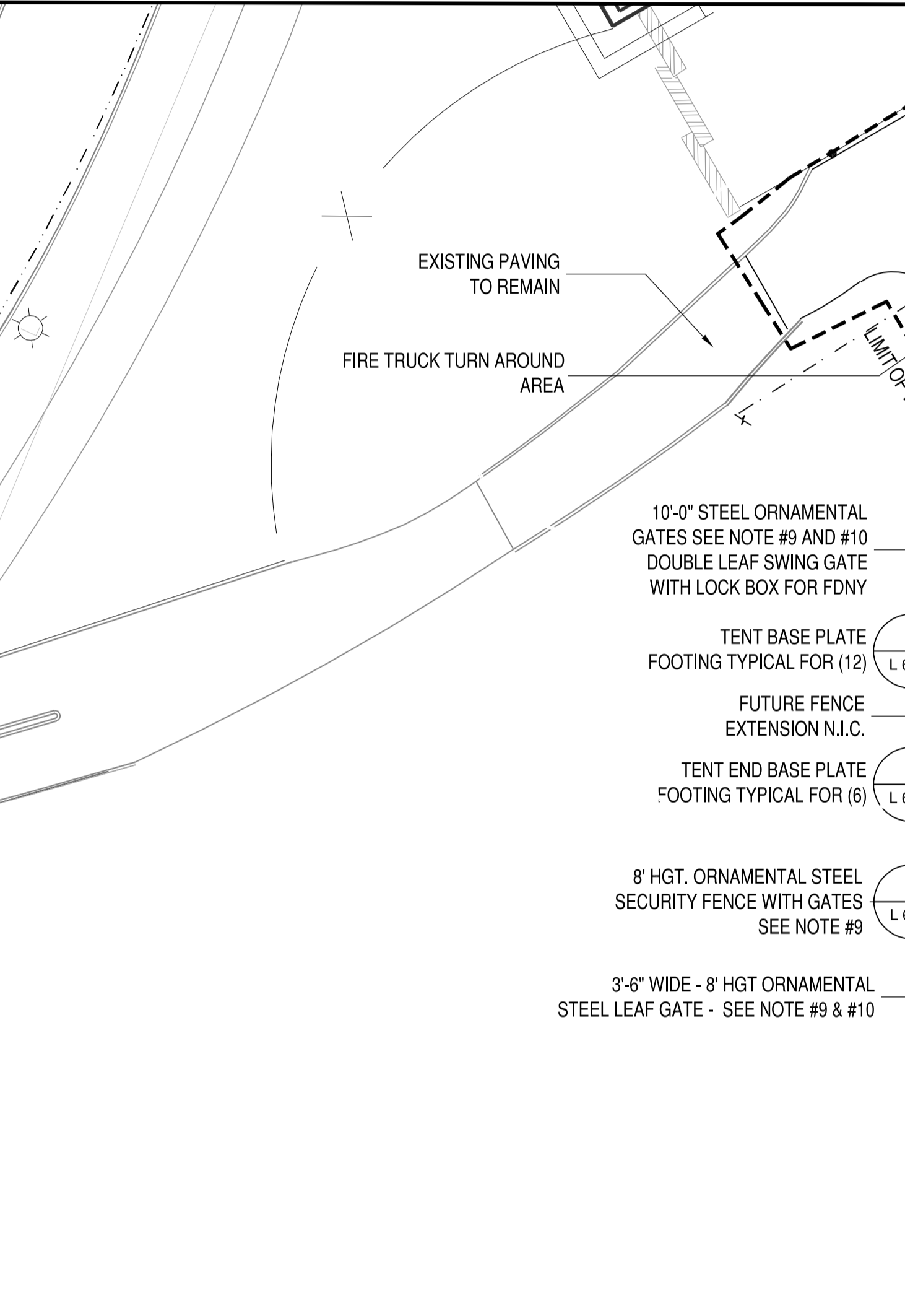
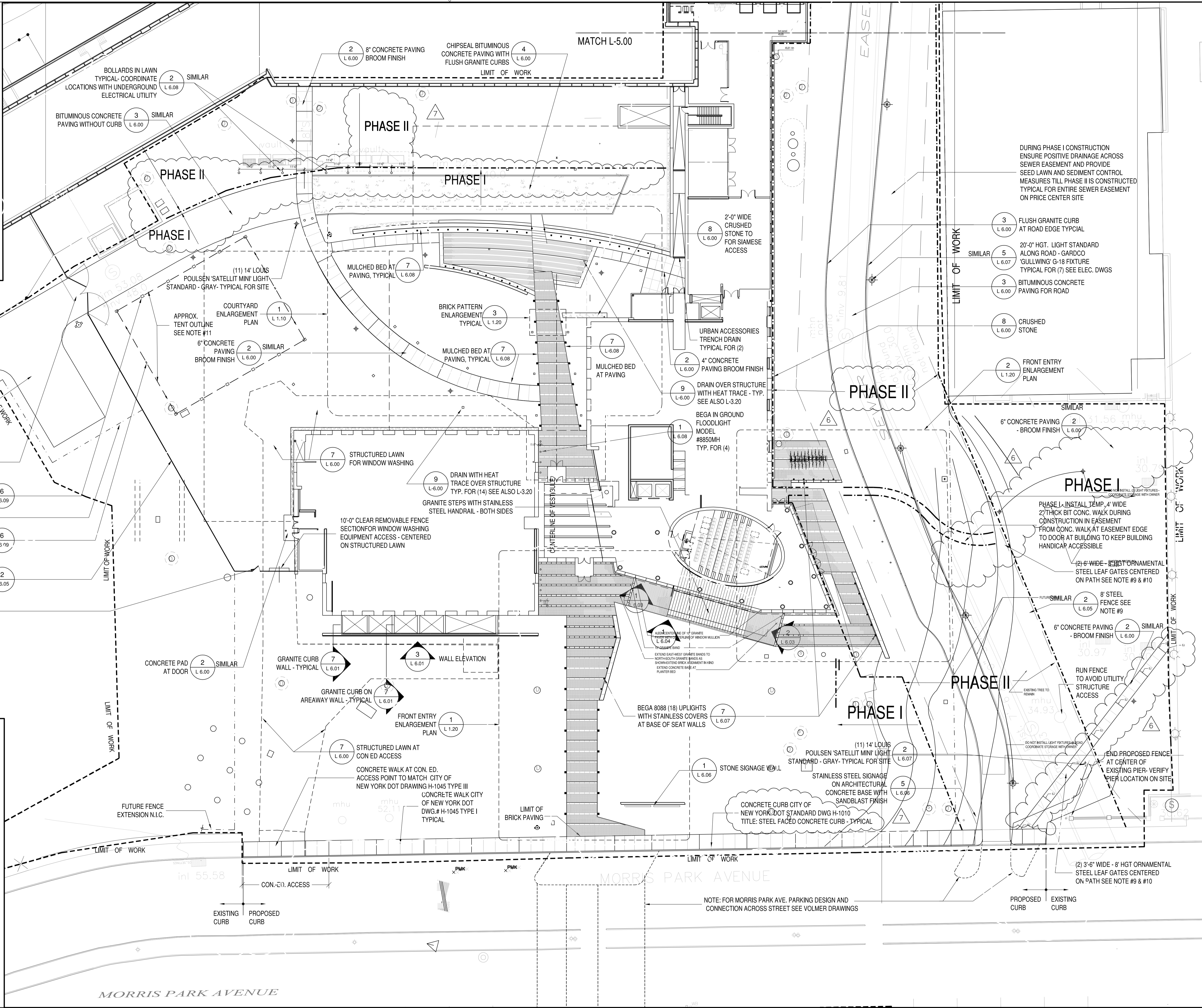


GENERAL NOTES:

1. ALL EXISTING SITE CONDITIONS TO REMAIN SHALL BE VERIFIED BY THE CONTRACTOR PRIOR TO CONSTRUCTION.
2. THE CONTRACTOR SHALL VERIFY ALL HORIZONTAL AND VERTICAL UTILITY LOCATIONS PRIOR TO CONSTRUCTION-SEE CIVIL AND SURVEY DRAWINGS.
3. ALL EXISTING PLANT MATERIAL SHALL BE PROTECTED UNLESS OTHERWISE NOTED-SEE SHEET L.400.
4. ALL UTILITIES AND MECHANICAL SYSTEMS ADJACENT TO VAN ETEN SHALL BE PROTECTED BY THE CONTRACTOR.
5. THE OWNER SHALL BE NOTIFIED IN WRITING OF ANY MATERIALS INDICATED TO BE STORED WHICH THE CONTRACTOR FEELS IS IN POOR CONDITION OR MAY BE DAMAGED.
6. FINISH FLOOR ELEVATIONS NOTED ARE TAKEN FROM AND INTERPOLATED FROM SURVEY DRAWINGS. THESE ELEVATIONS SHALL BE VERIFIED BY THE CONTRACTOR PRIOR TO CONSTRUCTION.
7. ALL DRAIN LOCATIONS, PROPOSED AND EXISTING, SHALL BE VERIFIED WITH CIVIL AND PLUMBING DRAWINGS PRIOR TO CONSTRUCTION.
8. PROPOSED LOCATION AND FINISH GRADE OF LIGHTPOLE FOOTINGS TO BE APPROVED BY LANDSCAPE ARCHITECT PRIOR TO INSTALLATION.
9. 8'-0" SECURITY FENCE BY MONUMENTAL IRON WORKS' ESTATE FENCE - STYLE-B' 8'-0" LENGTH SECTIONS WITH 3/4" PICKETS PAINTED BLACK - GATE AT DOCK TO MATCH ESTATE STYLE B DOUBLE SWING GATE WITH 3/4" PICKETS - 1-800-229-5615
10. GATES TO INCLUDE HARDWARE FOR PAD LOCK
11. THE FOLLOWING TENT IS FURNISHED BY THE OWNER:
ANCHOR INDUSTRIES' ANCHOR SPAN: 60'X75' CLEAR SPAN TENT (ANCHOR INDUSTRIES, 11 BURCH DRIVE EVANSVILLE IND 47733, 812-867-2421, CONTACT - JED JOHNSON) CONTRACTOR TO VERIFY PLACEMENT OF FOOTING AND THREADED INSERT LOCATIONS THAT RECEIVE OWNER PROVIDED BASE PLATES FROM TENT MANUFACTURER.
12. 3'x6' HY-SECURITY DOUBLE PANEL SWING GATE OPERATOR WITH SMART TOUCH CONTROLLER MODEL #HRG-222 B ST WITH SHADOW LOOP, OBSTRUCTION LOOP, AND FREE EXIT LOOP PAVING SENSORS - 1-800-321-9947 WWW.HY-SECURITY.COM LOCAL REP. - POWERDOOR PRODUCTS (914) 698-5083 WWW.POWERDOORPRODUCTS.COM
13. HY-SECURITY DOUBLE PANEL SWING GATE OPERATOR WITH SMART TOUCH CONTROLLER MODEL #HRG-222 B ST WITH SHADOW LOOP, OBSTRUCTION LOOP, AND FREE EXIT LOOP PAVING SENSORS - 1-800-321-9947 WWW.HY-SECURITY.COM LOCAL REP. - POWERDOOR PRODUCTS (914) 698-5083 WWW.POWERDOORPRODUCTS.COM GATE TO BE PRICED WITH THE FOLLOWING AS ALTERNATES: PHOTO-EYE OBSTRUCTION DETECTOR, OBSTRUCTION SENSING EDGES, WARNING BUZZER.



1 EXTENSION OF DRAWING

PLANNING
LANDSCAPE
PAYETTE
ARCHITECTURE
ASSOCIATES
INTERIORS
GRAPHICS

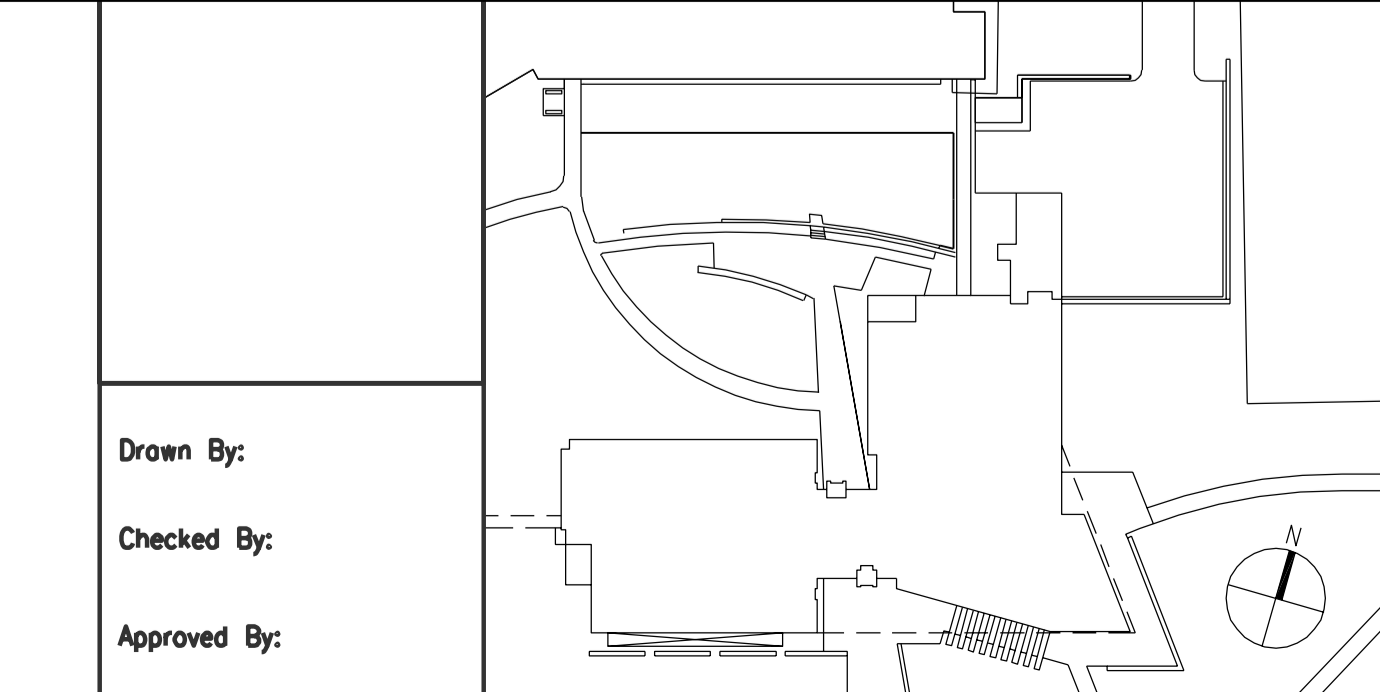
Architect:
Payette Associates Inc.
205 Summer St.
Boston, MA 02210
Tel: (617)-895-1000
Fax: (617)-895-1002
www.payette.com

Landscape Architect:
Sirota Design

M/E/P/FP Engineers
Flock + Kurtz, Inc.


Structural Engineers
Weidinger Associates, Inc. (Cambridge, MA)

Civil Engineers
Weidinger Associates, Inc. (New York, NY)



| Number | Date | Description |
|--------|----------|---|
| 7 | 05/11/07 | BULLITEN #27 |
| 6 | 03/09/07 | SITE RE-DESIGN ADDENDUM #1 |
| 5 | 02/09/07 | SITE REVISIONS PACKAGE |
| 4 | 12/2/05 | BULLITEN #16 - UPDATED CONSTRUCTION SET |
| 3 | 09/23/05 | BULLITEN #14 |
| 2 | 06/22/05 | CONSTRUCTION SET |
| 1 | 12/17/04 | UPDATED CONSTRUCTION DOCUMENTS |

| Number | Date | Description |
|--------|----------|---|
| 7 | 05/11/07 | BULLITEN #27 |
| 6 | 03/09/07 | SITE RE-DESIGN ADDENDUM #1 |
| 5 | 02/09/07 | SITE REVISIONS PACKAGE |
| 4 | 12/2/05 | BULLITEN #16 - UPDATED CONSTRUCTION SET |
| 3 | 09/23/05 | BULLITEN #14 |
| 2 | 06/22/05 | CONSTRUCTION SET |
| 1 | 12/17/04 | UPDATED CONSTRUCTION DOCUMENTS |


Albert Einstein College of Medicine
of Yeshiva University
Michael F. Price Center for Genetic and Translational Medicine
and
Harold and Muriel Block Research Pavilion
1300 Morris Park Avenue, Bronx, New York 10461
(718) 430-2805 tel
(718) 430-8940 fax

LANDSCAPE
MATERIAL PLAN

Drawing Scale
1"=20'-0"

Project Number
40711.00

Date Issued
10/29/04

L1.00

©COPYRIGHT 2004, PAYETTE ASSOCIATES INC