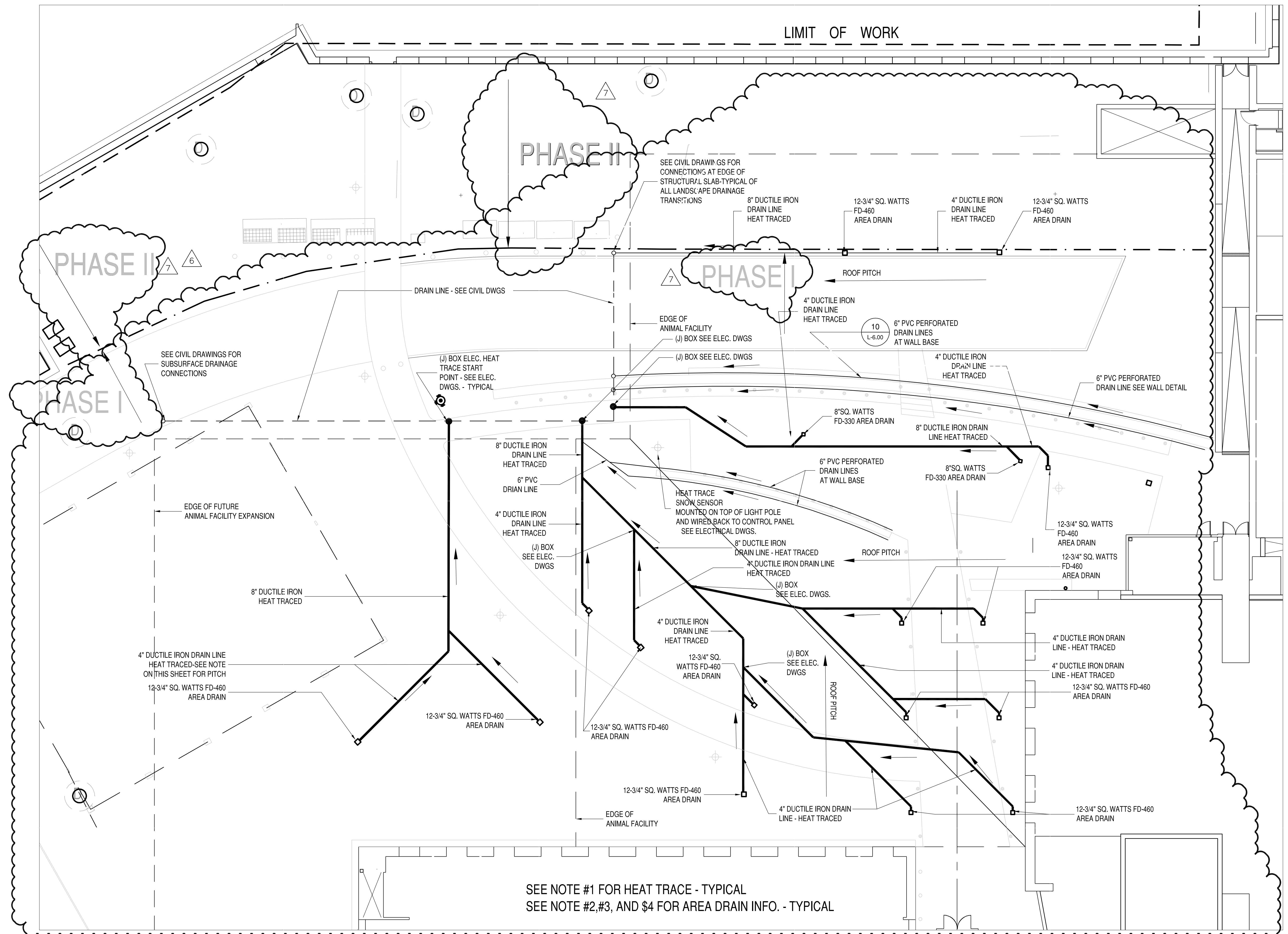


GENERAL NOTES:

1. NELSON SELF REGULATING HEAT TRACE
SEE SPEC. AND NOTES THIS PAGE FOR THIS AND ALL EQUIPMENT NOTED ON THIS DRAWING.
2. SEE DETAIL 9 AND 12 ON L-6.00 FOR HEAT TRACE INSTALLATION ON PIPING. WRAP ALL AREA DRAINS
3. ALL LANDSCAPE DRAIN LINES ABOVE THE ANIMAL FACILITY ROOF WILL BE LAID ABOVE THE WATERPROOF MEMBRANE, DRAINAGE COMPOSITE, AND PROTECTION BOARD AND FOLLOW THE PITCH OF THE ANIMAL FACILITY ROOF SLAB. ALL LINES MUST HAVE POSITIVE DRAINAGE TOWARD EDGE OF ANIMAL FACILITY ROOF. ADVISE LANDSCAPE ARCHITECT IF ANY CHANGES TO DESIGN NEED TO BE MADE TO ACCOMPLISH POSITIVE DRAINAGE.
4. SEE CIVIL DRAWINGS FOR CONNECTIONS TO VERTICAL PIPING CONNECTIONS AT EDGE OF STRUCTURAL SLAB-TYPICAL OF ALL INTERFACE TRANSITIONS AT EDGE OF SLAB.
5. INFORMATION PROVIDED BY AEF SALES ENGINEERING CO. MANHATTAN, NY 1077-9039 EXT. 293
CONTACT - WES RAYBURN QUOTE #400515 3/9/07
ALBERT EINSTEIN SCHOOL OF MEDICINE

QUANTITY	DESCRIPTION	UNIT	AMOUNT
1000	8" DUCTILE IRON DRAIN LINE	LINEAL FT.	1000
4	4" DUCTILE IRON DRAIN LINE	LINEAL FT.	4
25	6" PVC PERFORATED DRAIN LINES	LINEAL FT.	25
1	12-3/4" SQ. WATTS FD-460 AREA DRAIN	AREA	1
1	8" SQ. WATTS FD-330 AREA DRAIN	AREA	1
1	8" DUCTILE IRON DRAIN LINE	LINEAL FT.	1
1	6" PVC PERFORATED DRAIN LINE	LINEAL FT.	1

NOTATION NOTES:
 Ht of materials based on maintaining 50 F @ 0 F minimum with 20% heat loss safety for for operation on 208 volts with 2" cellular glass insulation and double tracing all pipe etc.



SEE NOTE #1 FOR HEAT TRACE - TYPICAL
 SEE NOTE #2,#3, AND #4 FOR AREA DRAIN INFO. - TYPICAL

1 LANDSCAPE COURTYARD DRAINAGE OVER STRUCTURE
 1" = 10'-0"

PLANNING
 LANDSCAPE
PAYETTE
 ARCHITECTURE
ASSOCIATES
 INTERIORS
 GRAPHICS

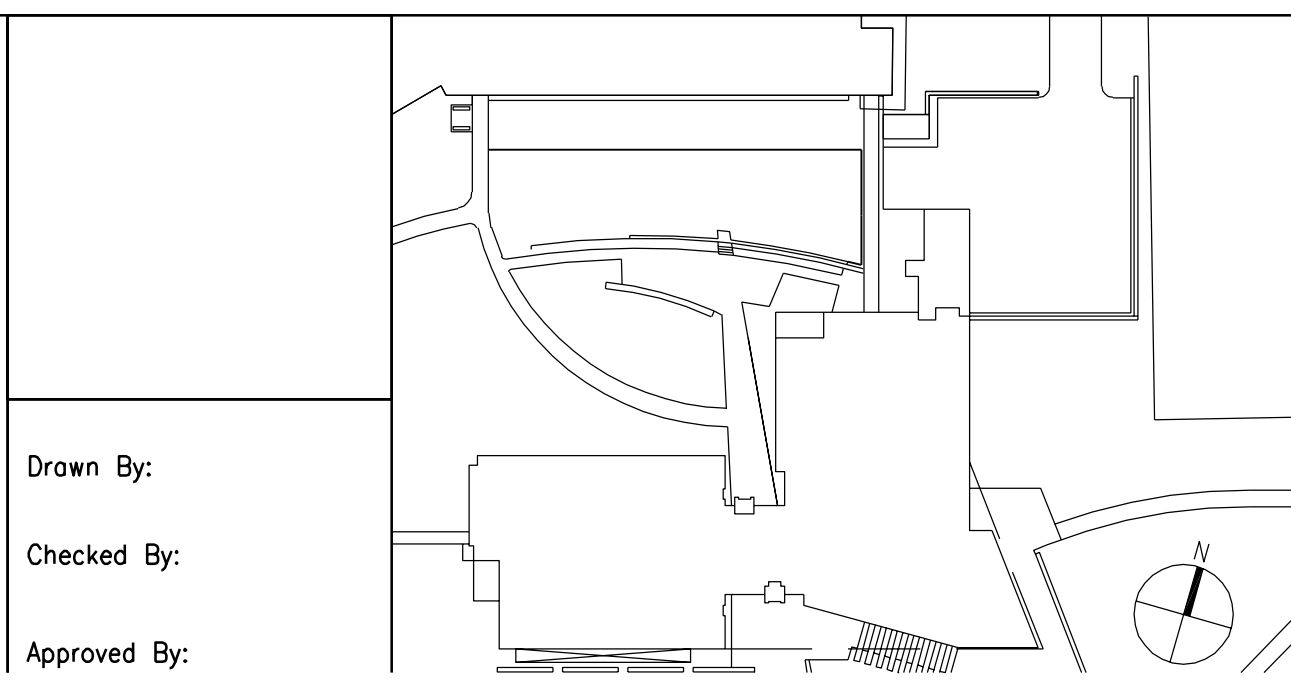
Architect:
 Payette Associates Inc.
 285 Summer St.
 Boston, MA 02210
 Tel: (617)-895-1000
 Fax: (617)-895-1002
 www.payette.com

Landscape Architect:
 Strato Design

M/E/P/FP Engineers
 Flack + Kurtz, Inc.

Structural Engineers
 Weidinger Associates, Inc. (Cambridge, MA)

Civil Engineers
 Weidinger Associates, Inc. (New York, NY)



Drawn By:
 Checked By:
 Approved By:

7	5/11/07	BULLITTEN # 27
6	03/27/07	SITE RE-DESIGN ADDENDUM #2
5	02/05/07	SITE REVISION PACKAGE
4	12/2/05	BULLITTEN #16 - UPDATED CONSTRUCTION SET
3	09/23/05	BULLITTEN #14
2	06/22/05	CONSTRUCTION SET
1	12/17/04	UPDATED CONSTRUCTION DOCUMENTS

Albert Einstein College of Medicine
 of Yeshiva University
 Michael F. Price Center for Genetic and Translational Medicine
 and
 Harold and Muriel Block Research Pavilion
 1300 Morris Park Avenue, Bronx, New York 10461
 (718) 430-2805 tel

LANDSCAPE
 LANDSCAPE DRAINAGE PLAN

Drawing Scale
 1"=10'-0"

Project Number
 40711.00

Date Issued
 11/10/07

L3.20