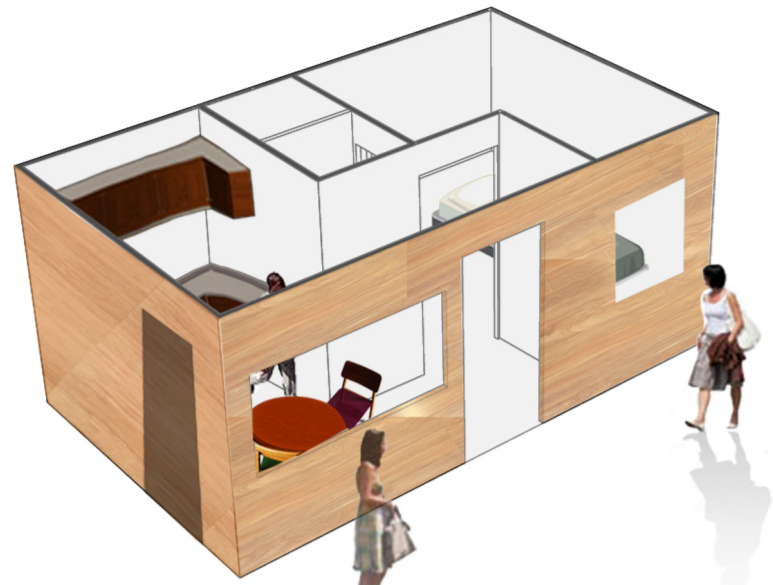
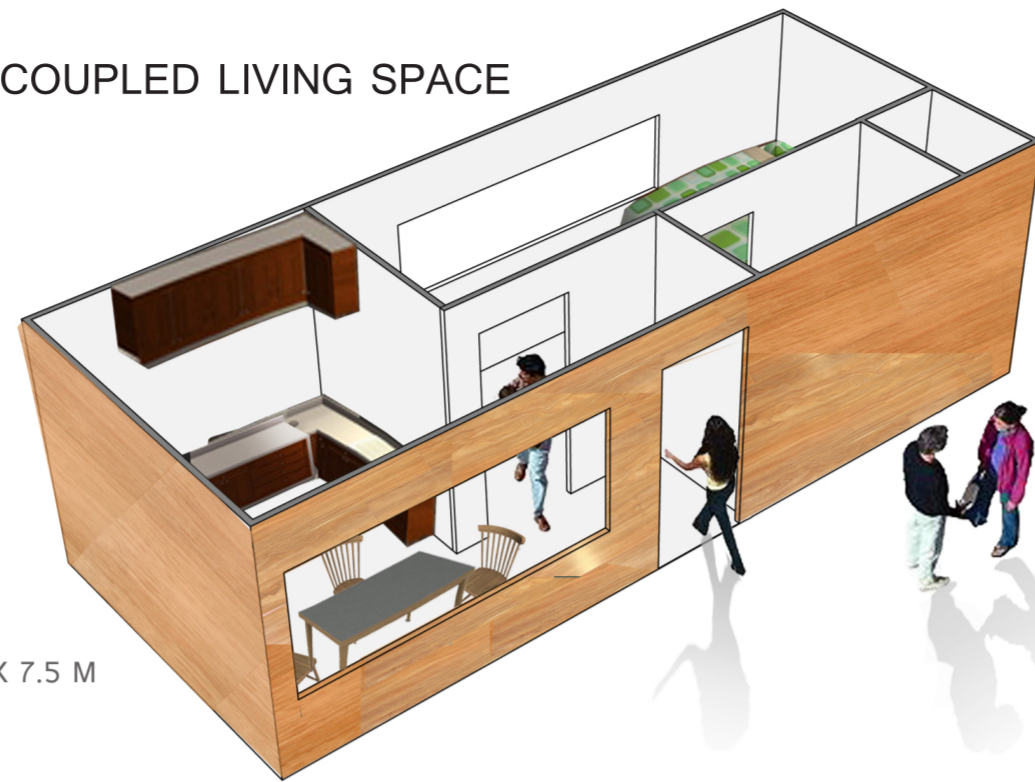


INDIVIDUAL LIVING SPACE



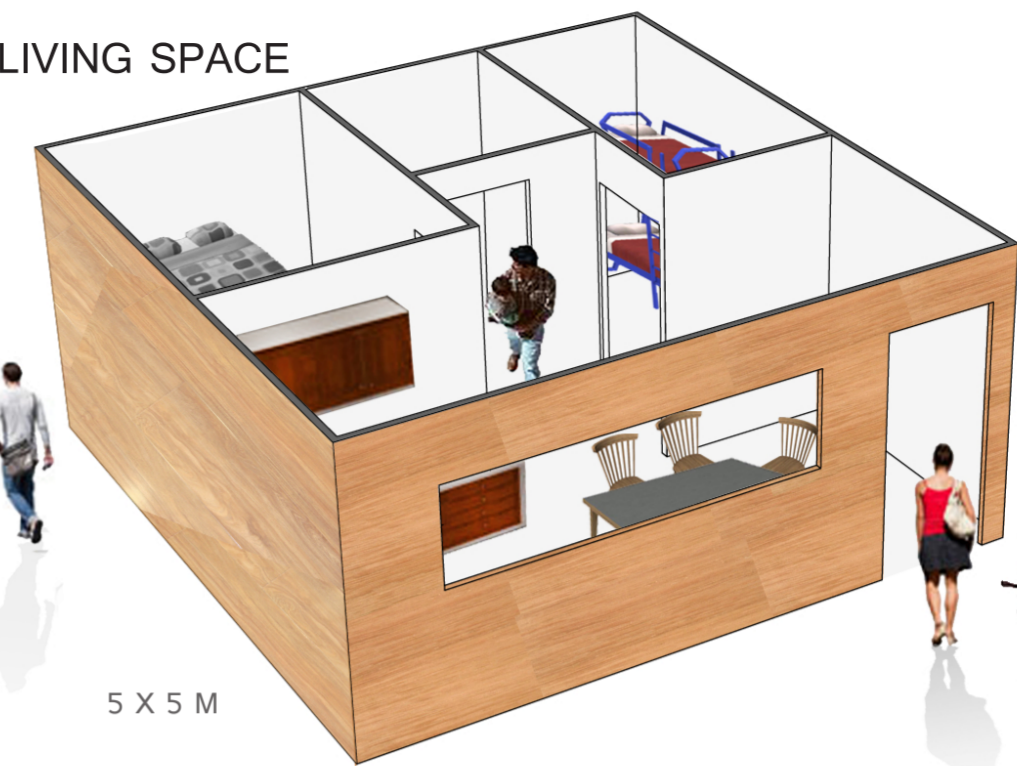
3 X 5 M

COUPLED LIVING SPACE



3 X 7.5 M

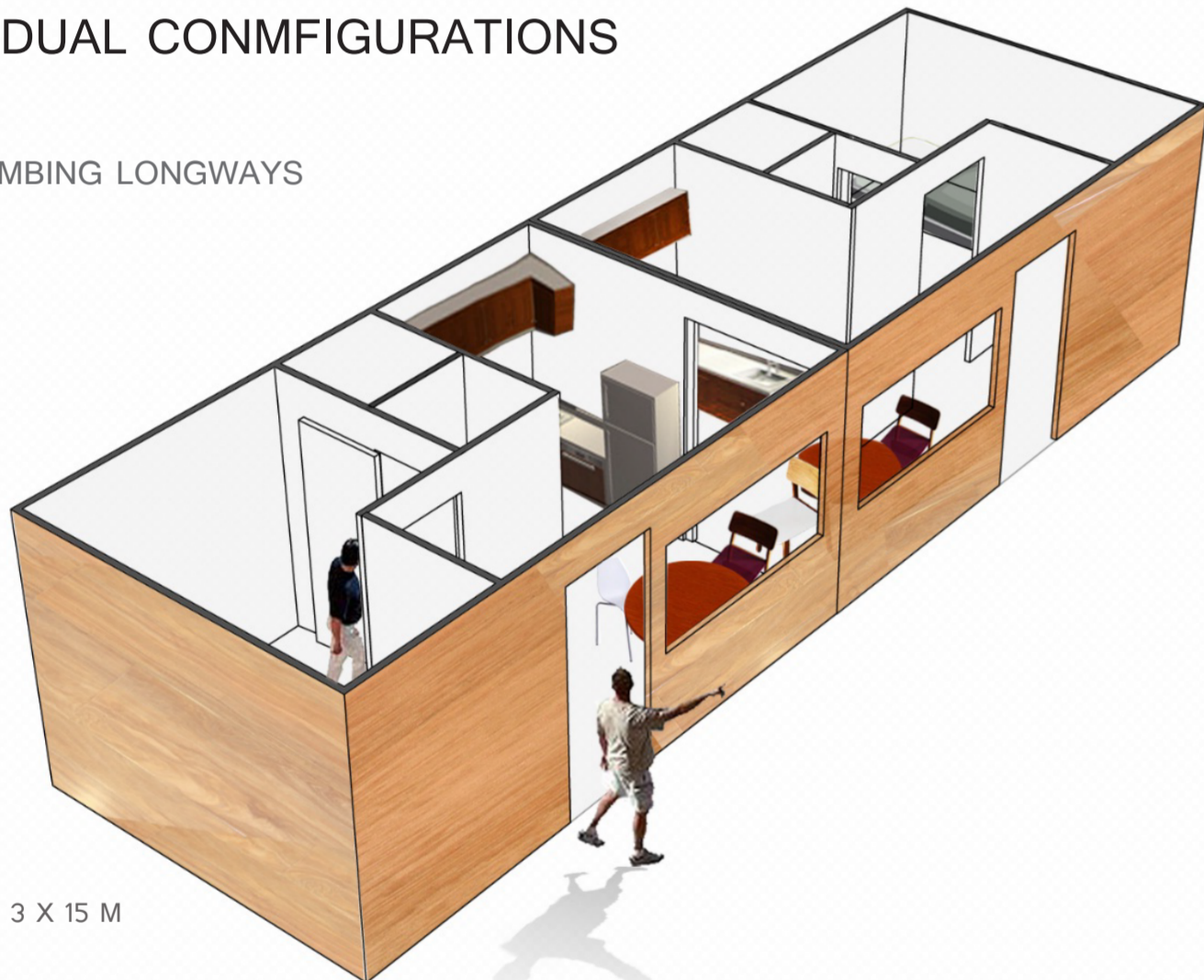
FAMILY LIVING SPACE



5 X 5 M

INDIVIDUAL CONMFIGURATIONS

COMBING LONGWAYS



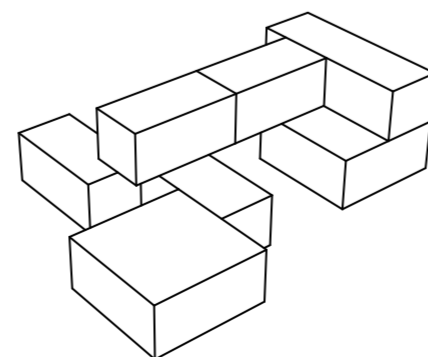
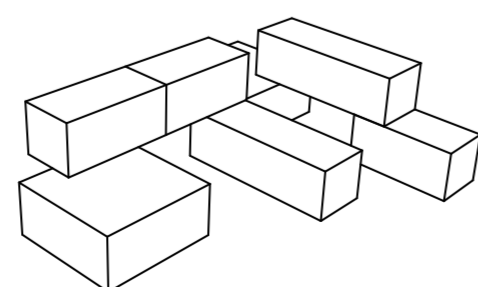
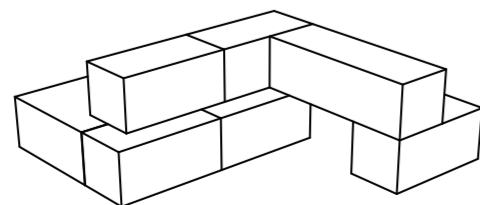
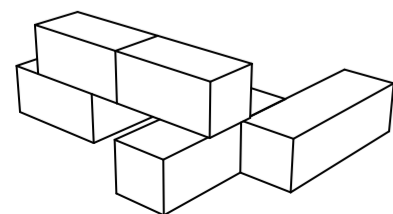
3 X 15 M

COMBING INTO CLUSTERS
[MIGRANT SUB GROUPS]



COMBINING INDIVIDUALS LONG WAYS

- MIGRANTS HAVE OPTION TO OPEN DOOR WAYS TO STILIZE SPACE AND RELATIONSHIPS



EACH MIGRANT HAS THEIR OWN NEEDS AND DESIRES WHEN LIVING IN MELBOURNE. THE CONFIGURATION OF THESE MACHINED TIMBER HOUSES ALLOW FOR THEM TO 'OPEN DOORS' TO RELATIONSHIP CONNECTING TO NEIGHBOURING SPACES THAT MAY BE DESIRED TO GAIN A RELATIONSHIP. THE SYSTEM OF CONSTRUCTION PROVIDES FOR CONFIGURATIONS OF THESE INDIVIDUAL, COUPLE AND FAMILY LIVING SPACES. IF RELATIONSHIP AND FRIENDSHIPS START TO EMERGE, MIGRANTS HAVE THE FREEDOM TO OPEN DOORS TO CONNECT NUMEROUS HOUSES TO EACHOTHER TO UTILIZE MORE SPACE TO LIVE IN AND TO SHARE LIVES TOGETHER TO SET A COMFORTING PHYSIC TO THEIR STARTING DAYS OF FREEDOM IN MELBOURNE.

THE PRECEDENT OF SYSTEMS 3 WAS BUILT AND ON THE IDEA OF HOW SMALL PEOPLE'S LIVING SPACES CAN BE AND THE DIFFERENT CONFIGURATION THAT CAN OCCUR IN PEOPLE HOMES.