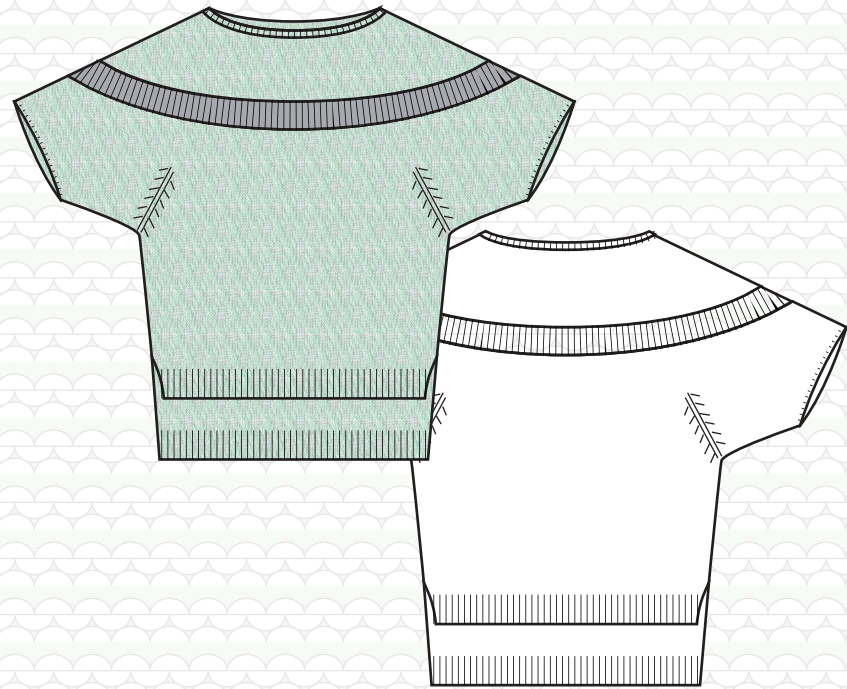


" Bloom "

Womens wear
Spring Summer 2014
Emphasized on silhouette

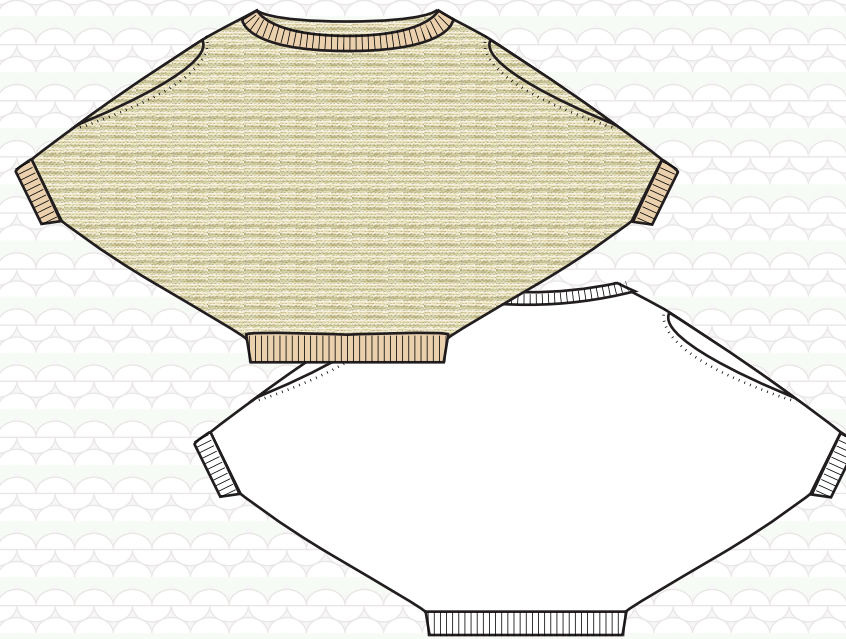
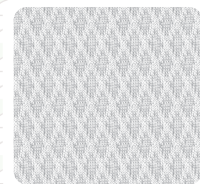
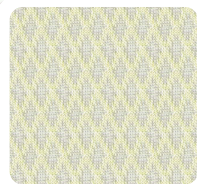
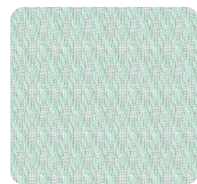


THEAHN



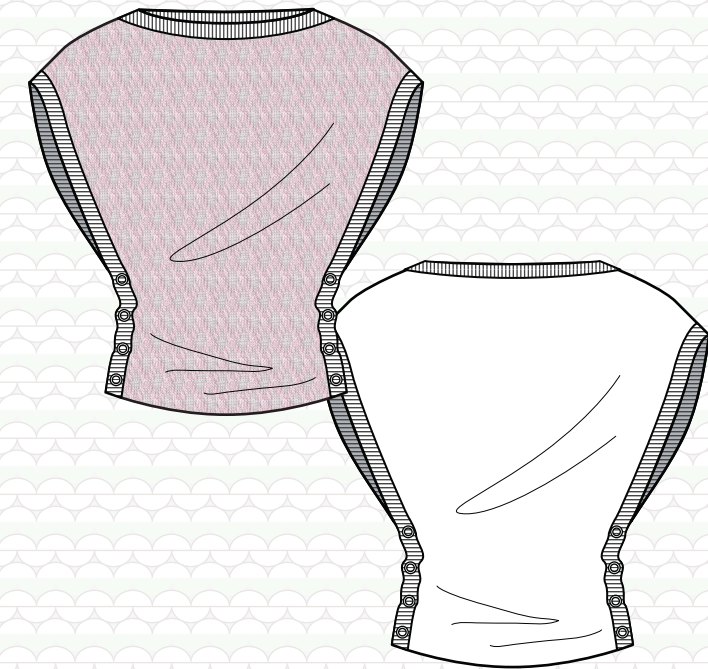
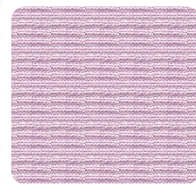
Style # AHN0422-W11

- crew neck knit top
- Boat neck, drop shoulder short sleeve
- Thread race pattern and contrast rib trim on the chest



Style # AHN0422-W12

- Dolman sleeves knit sweater
- Opening at shoulder with jacquard variation stitch
- Dolman sleeves



Style # AHN0422-W13

- Knit vest
- Rib trim at side seam and button closure at waist
- Thread lace pattern design and wide crew neck

