

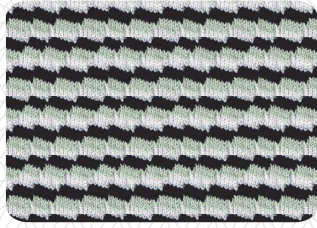


T H E A H N

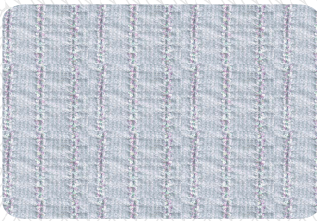
"Healing" Spring Summer 2014  
Emphasized on stitches

Fabrics

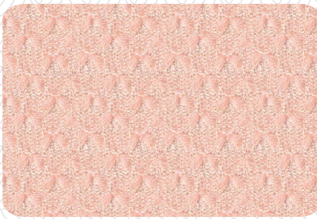
**Knit**



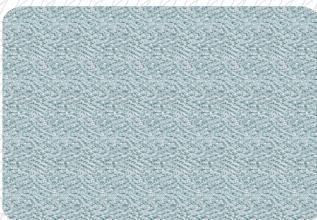
TUCK STITCH STRIPE  
14gg



TUCK STITCH  
14gg

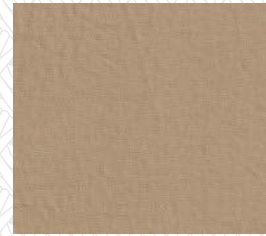


WEAVING STITCH  
14gg



SLIP STITCH  
14gg

**Woven**



Cotton Stretch  
77% Cotton 13% Nylon  
10% PU



Cotton blend  
44% Cotton 56% LI



BI-Stretch Double Face  
94% WV 5%EA 1%PA

Colors

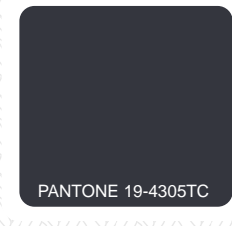
**CORE**



**FASHION**



**ACCENT**



Trims



4 Hole Button  
35L



34L Button  
Plastic



36L Metal Button  
Metal



23", 50" KCC Zipper  
Metal

