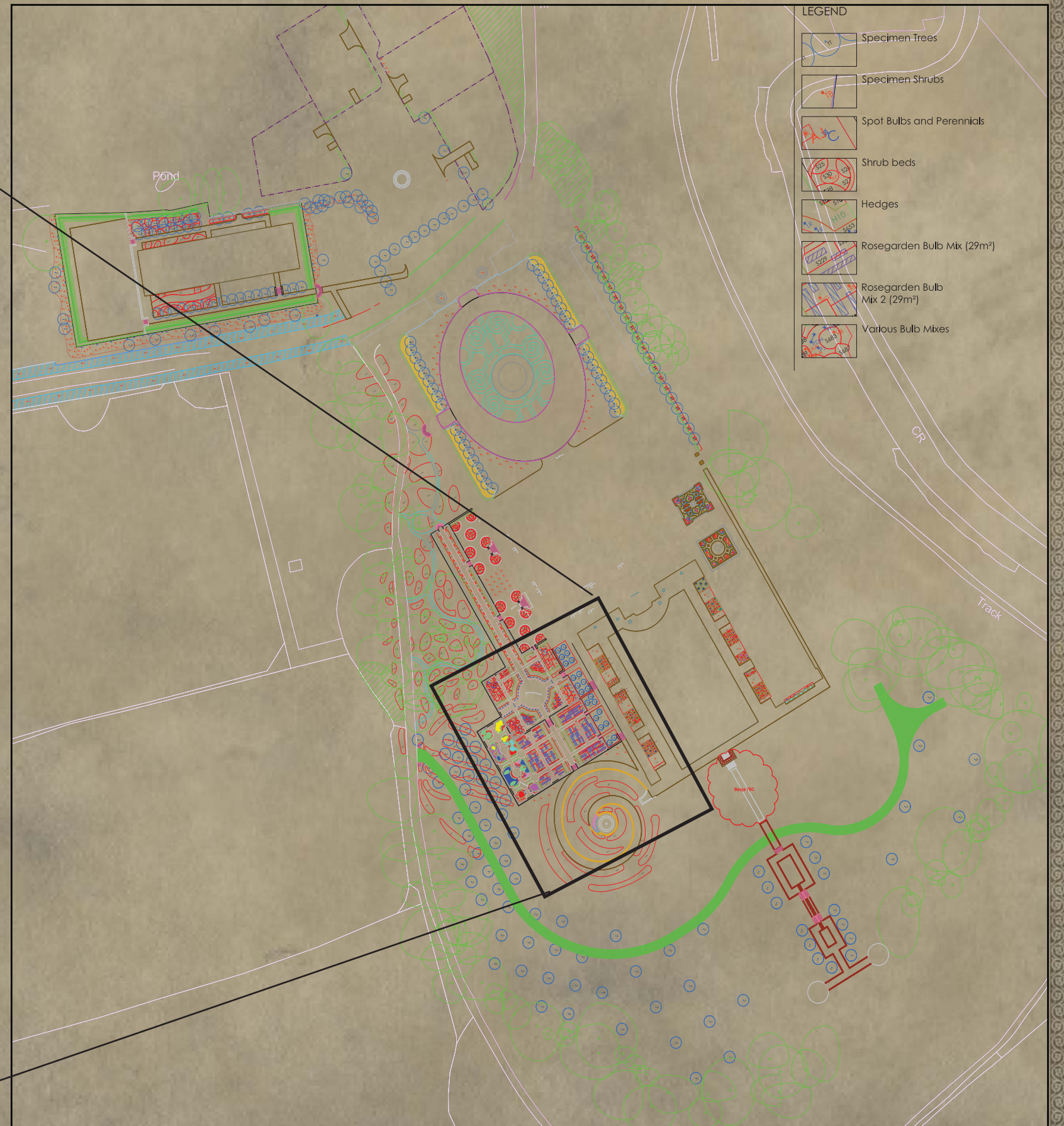
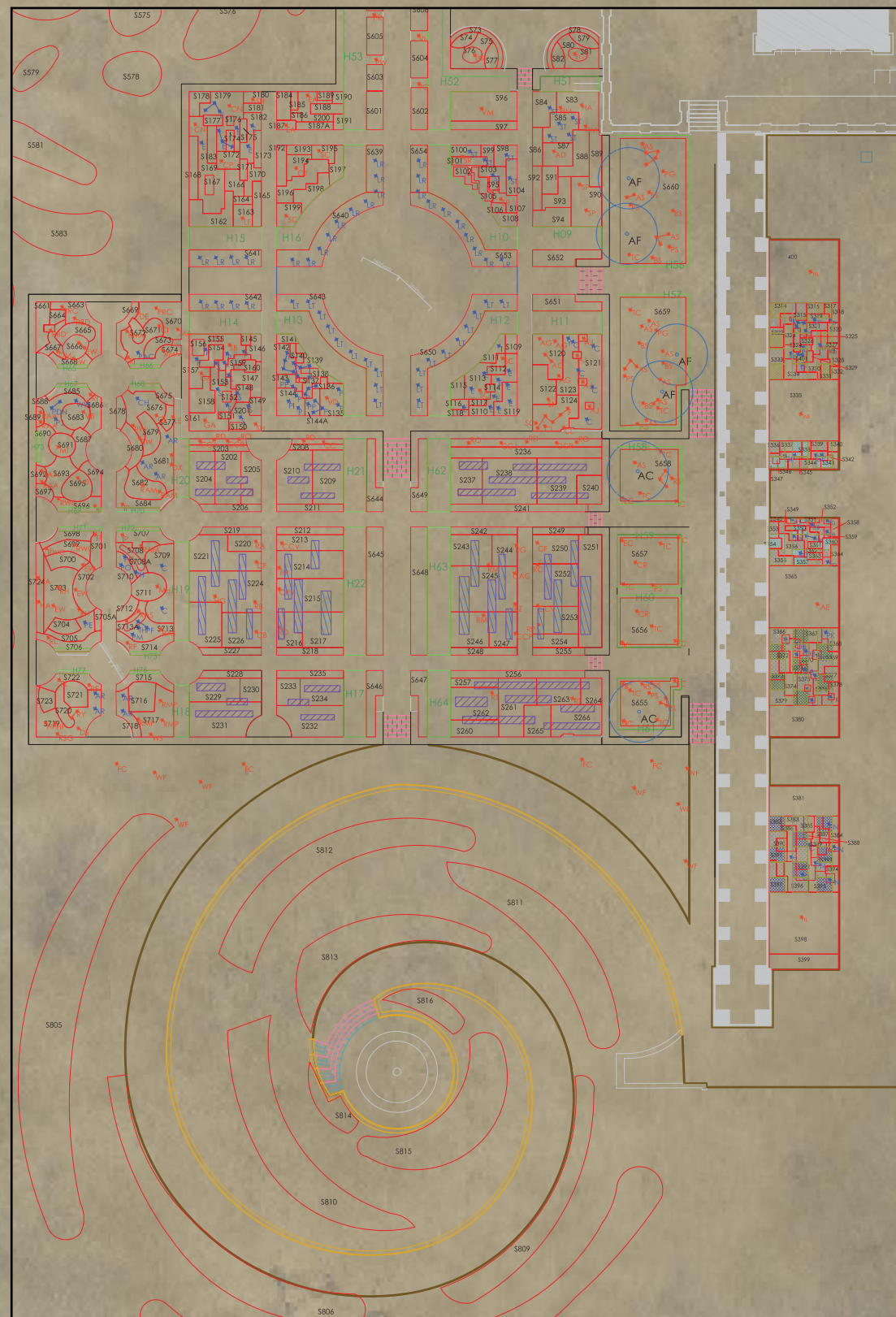


THE HALL
Detailed Planting Plan
 & SCHEDULE

The Hall is an extensive estate whose splendor has been compared to Versailles. While co-ordinating with the lead Landscape Architect and head Garden Designer, I produced the planting plan for this property. Due to the extreme detail of the planting design, I was required to create a clear system to organize and key the various types of plants that were used. We worked together to produce a highly complex plan which could be clearly read by a contractor.



- LEGEND
- Specimen Trees
 - Specimen Shrubs
 - Spot Bulbs and Perennials
 - Shrub beds
 - Hedges
 - Rosegarden Bulb Mix (29m²)
 - Rosegarden Bulb Mix 2 (29m²)
 - Various Bulb Mixes