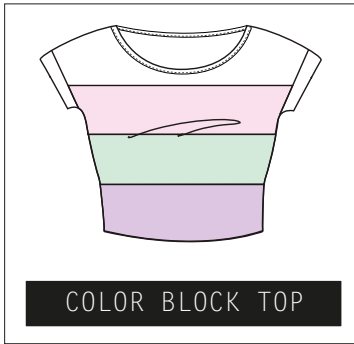


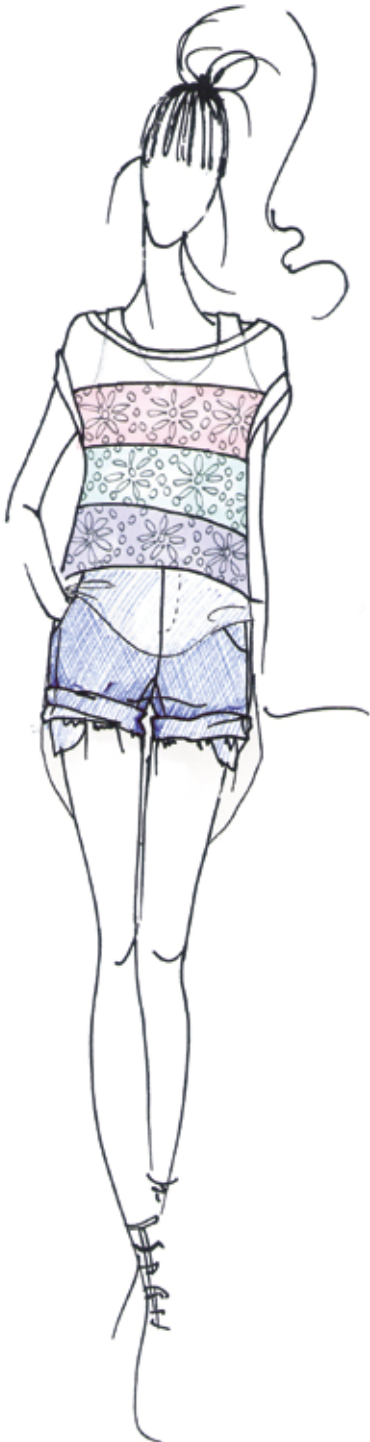
1.

Spring - Summer

Pastels



3.1 Phillip Lim



Givenchy



Louis Vuitton



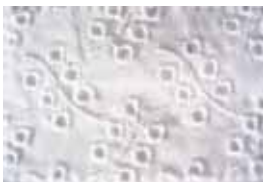
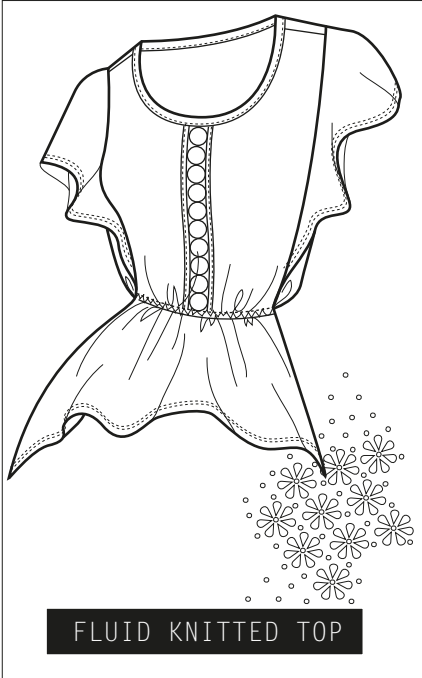
Issey Miyake



2.

Spring - Summer

Lace & embroideries



Louis Vuitton



Preen



Isabel Marant



3.

Spring - Summer

Navajo



BRAIDS



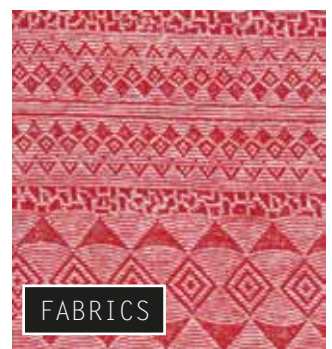
Carven



LACE SKIRT



PEARLS



FABRICS



Barbara Bui



Isabel Marant



with pearls, stones and applied galons

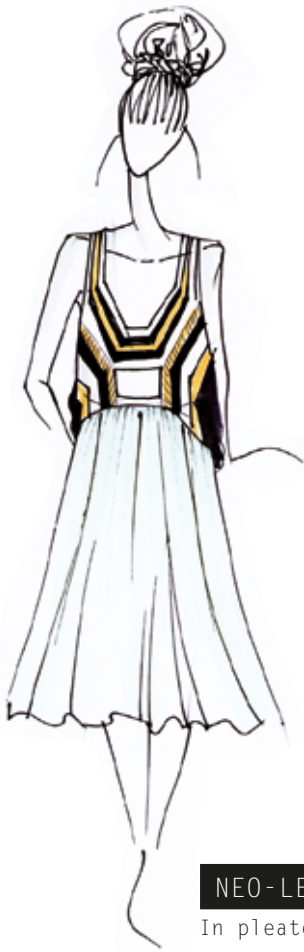


GAUFRE KNIT

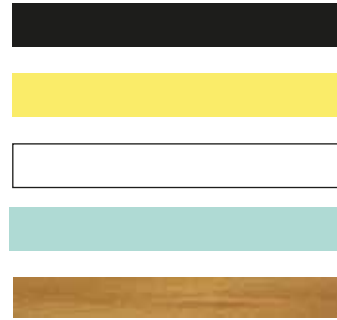
4.

Spring - Summer

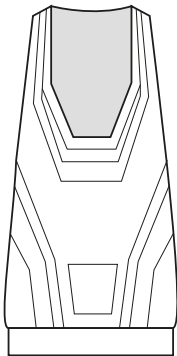
Graphism



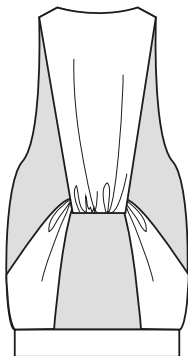
Nicole Miller



Sonia Rykiel



Fluid jersey with pearls and chains



OPEN BACK TOP

Salvatore Ferragamo



Nicole Miller



Gucci



Barbara Bui



5.

Spring - Summer

Flowers

BRALETTE



Mixed fabrics:
chiffon & crepe



Printed
cotton satin

CROPPED PANT

Mixed with:

STRIPPED JACKET



Pleated
flared top
and printed
cotton satin
short



Cynthia Rowley



Peter Som



Preen



Dries
Van Noten



6.

Fall - Winter

Tapestry



CAMEE



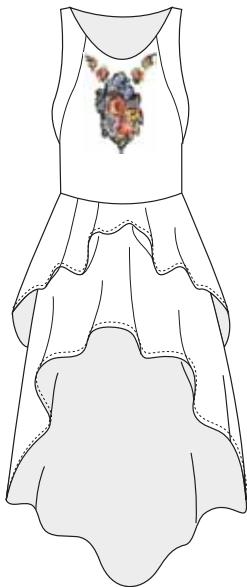
TRIMMINGS

Valentino

Rag & Bone

Dolce & Gabbana

ASYMETRIC DRESS



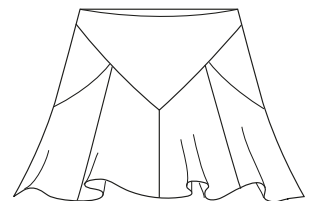
Fluid asymeric dress with embroderies in light crepe



7.

Fall - Winter

Orange & Metallics



Foiled skating skirt



Top in flocked mesh

Waistcoat in fur

Pencil skirt in foiled milano

Acne



Prabal Gurung



Emilio Pucci



8.

Fall - Winter

Military & Houndstooth



BODYCON DRESS



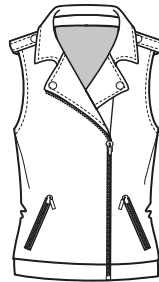
Victoria Beckham



Salvatore Ferragamo



TRIMMINGS



Sleeveless jacket in washed gabardine



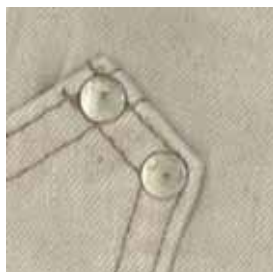
Emilio Pucci



Fall collection

TALLY WEIJL

Printed Milano dress



9.

Fall - Winter

Baroc & Velvet



Fluid velvet jacket with embroideries

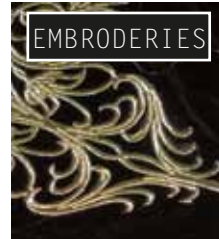


VINTAGE



FLUID VELVET

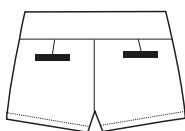
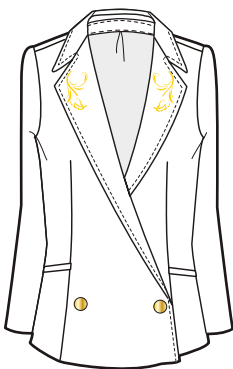
Heavy crepe short with embroideries and pearls



EMBROIDERIES



PEARLS



3almain



Ralph Lauren



McQ



10.

Fall - Winter



Galaxy



STONES



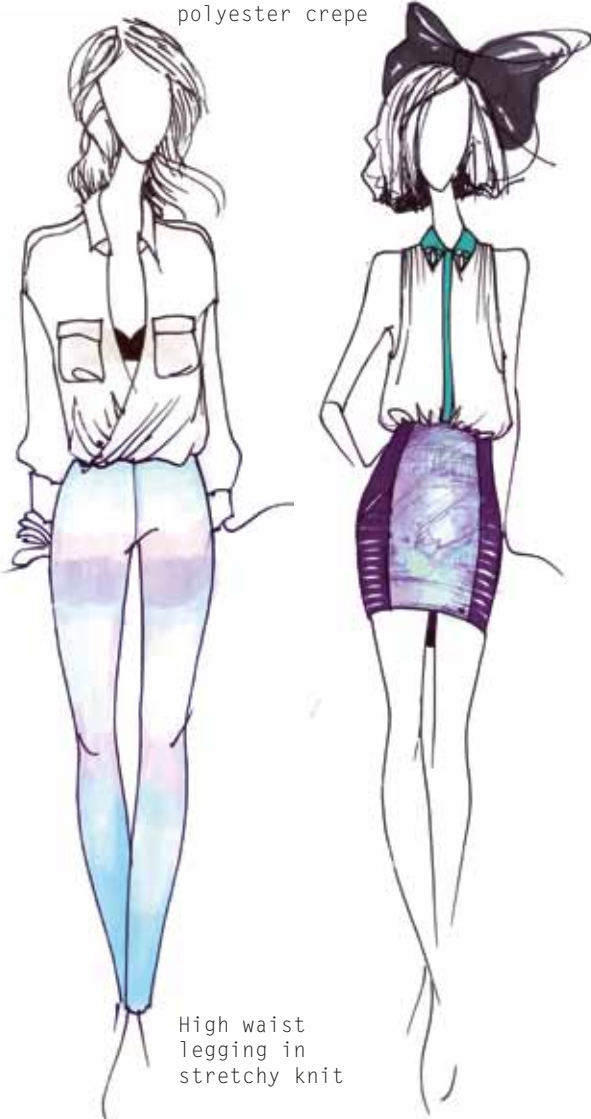
Chanel



STARS



Drapey twisted shirt in light polyester crepe



High waist legging in stretchy knit



Balenciaga



Hakaan