

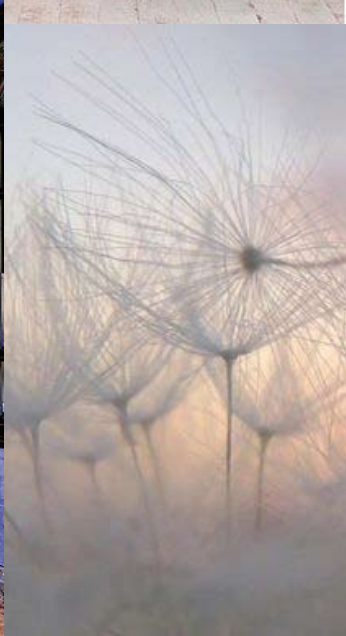
# IMPERIAL FLOURISH

fall - winter 2014/15



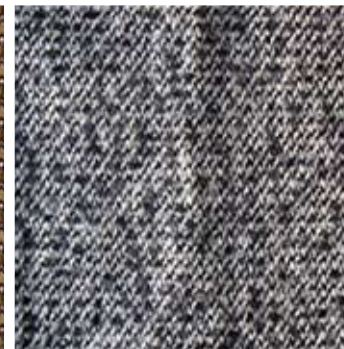
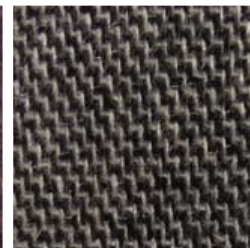
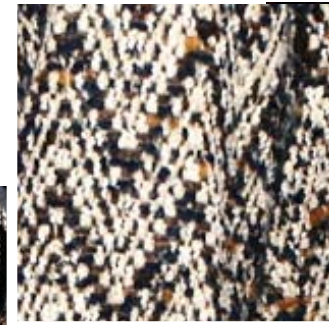


IMPERIAL FLOURISH





FLOWERS PRINT  
CHEVRONS  
STRIPES FLANELLE  
COTTON CROCHET ...

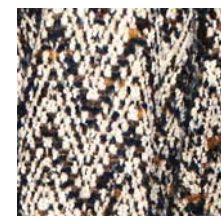
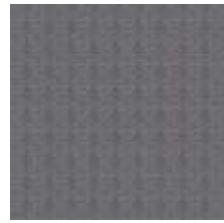


# KEY COLORS



- HONEY MUSTARD
- BLUSH
- CRIMSON
- CRANBERRY
- TEAL
- ORCHID
- COBALT BLUE
- LIGHT GREY
- ORANGE
- TOFFEE
- PEACHY NUDE

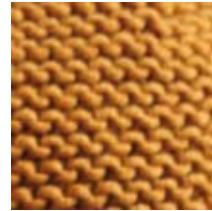
KNITTED WOOL  
WOOL FLANELLE  
SLUB YARN MERINO  
COTTON CROCHET  
CHEVRON



TENCEL  
JACQUARD MERINO  
PRINTED SLUB YARN  
KNIITED WOOL  
HEMP KNIT



CHEVRON IN WOOL  
KNITTED WOOL  
SLUB YARN MERINO  
KNITTED WOOL  
TENCEL

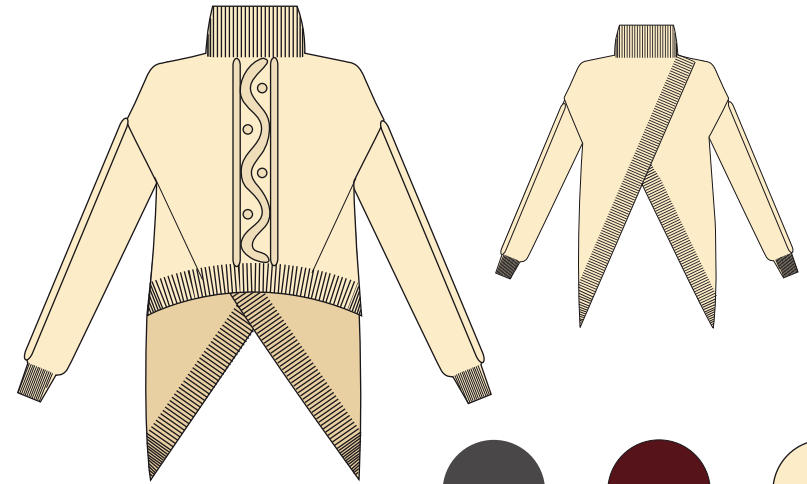




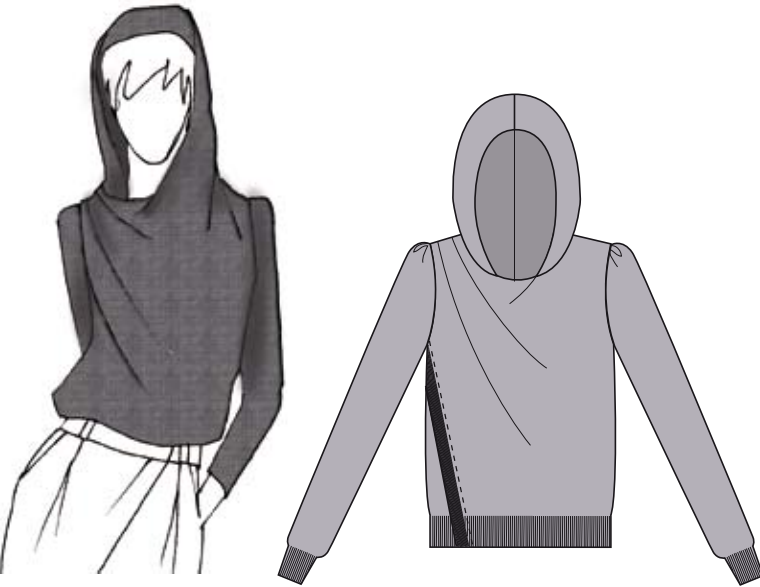
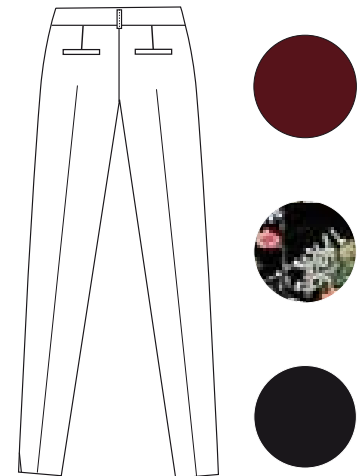
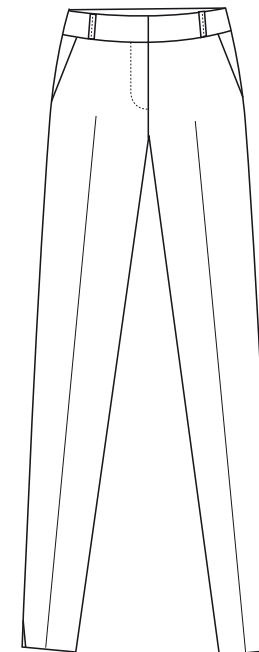
KNITTED WOOL  
PRINTED SATIN COTTON  
PRINTED RAYON  
STRIPPED FLANELLE



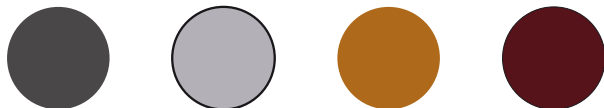
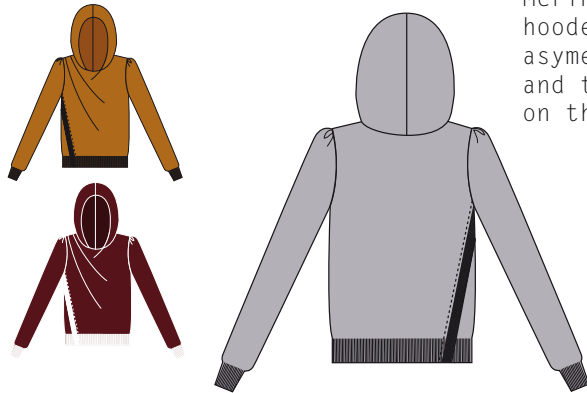
Knit 100% wool  
cropped pullover  
with crossover  
on the back.



Cropped printed trousers  
in satin organic cotton  
and in wool jacquard for  
the solid versions. Two  
italian pockets and slits  
and the bottom. Fake piping  
pockets on the back.



Merinos wool 12g  
hooded jumper with  
asymetric detail  
and two flats pleats  
on the shoulder seam



FALL WINTER 14/15

DRESS# MARZIA

FABRIC/ 100% ORGANIC COTTON  
COLORS/



TEAL



CRANBERRY

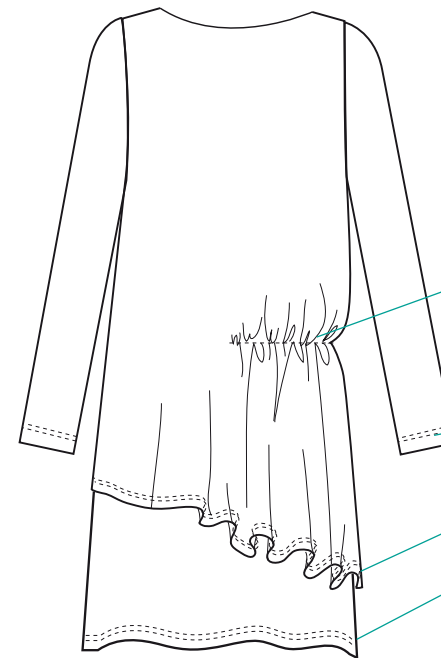


ASSEMBLY SEAM  
with the "outside"  
part of the dress  
and the "inner" one

SIDE SEAMS



UNDER DRESS  
IN SHELL FABRIC



SMOCK & gathers  
Inside elastic thread  
only on the side

COVER STITCH  
Simple hem  
at 1 cm  
from the edge