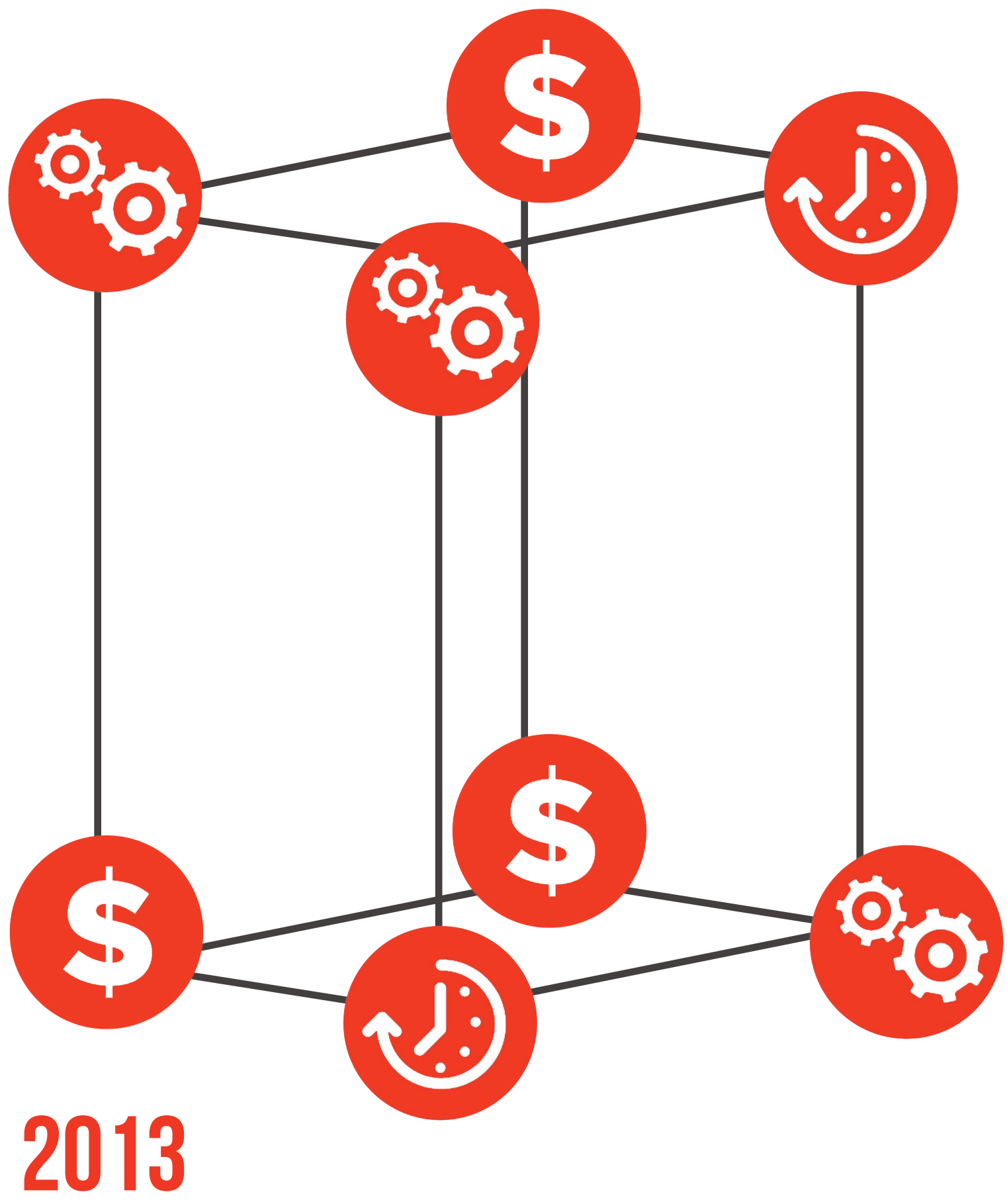


HACKABLE WORK ENVIRONMENTS



2013

BREAKING SPACE & TIME-BOUND SILOS FOR A FLUID-WORK EXPERIENCE:

REIMAGINING WHAT IT MEANS TO WORK ...

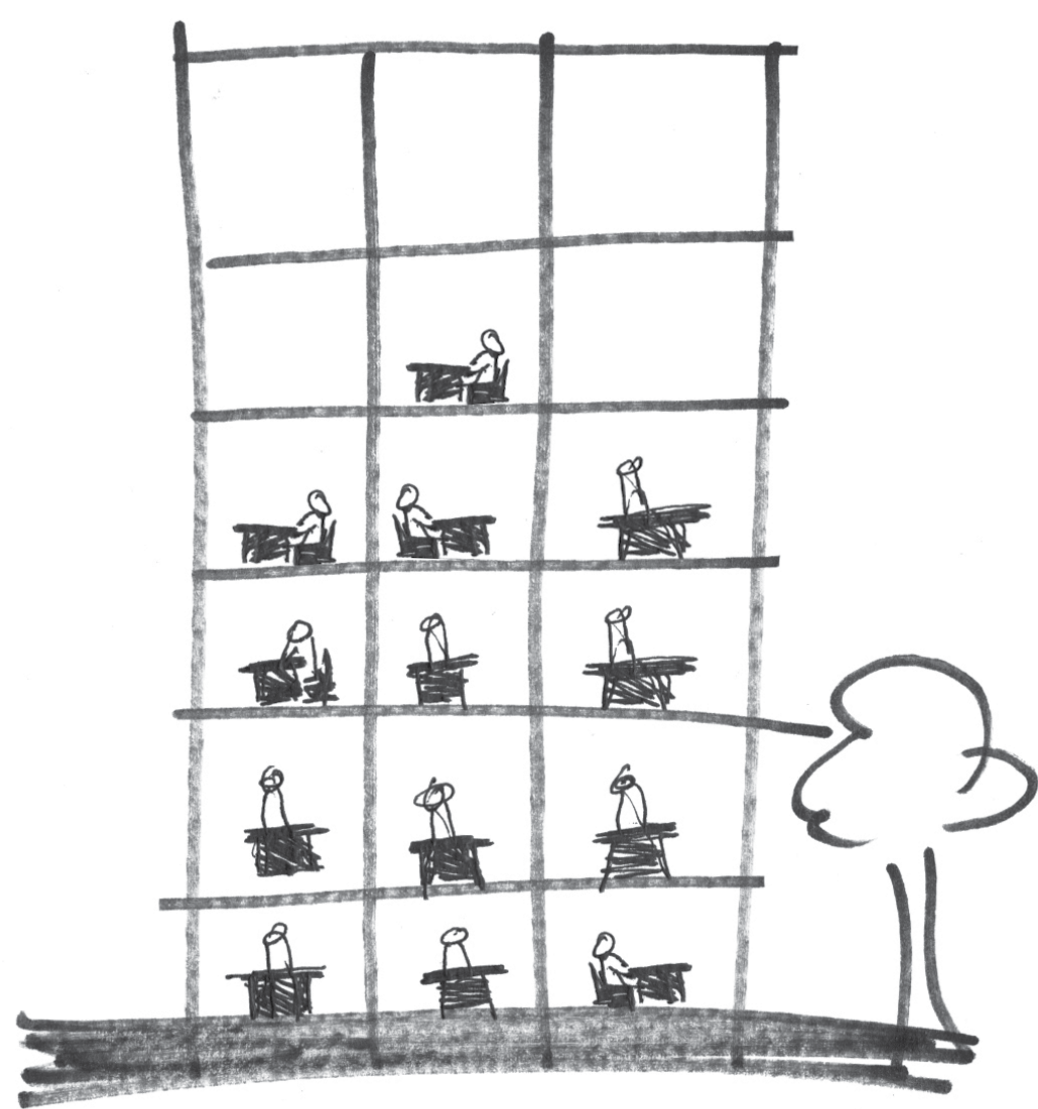
WHERE: FROM RIGID, CENTRAL PHYSICAL MASSES FOCUSED ON TIME AND MONEY TO HACKABLE, MOBILE ARCHITECTURES OF CUSTOMIZABLE NODES. MOVING FROM CORPORATE MOTIVATIONS TO INDIVIDUAL MOTIVATION OF WHAT MAKES PEOPLE COME TO WORK.

WHEN: FROM A TRADITIONAL MONDAY TO FRIDAY, 9-5 SCHEDULE TO WORK-LIFE ACTIVITIES DISTRIBUTED THROUGH THE DAY AND WEEK, FACILITATING AGILITY, CREATIVITY AND PRODUCTIVITY.

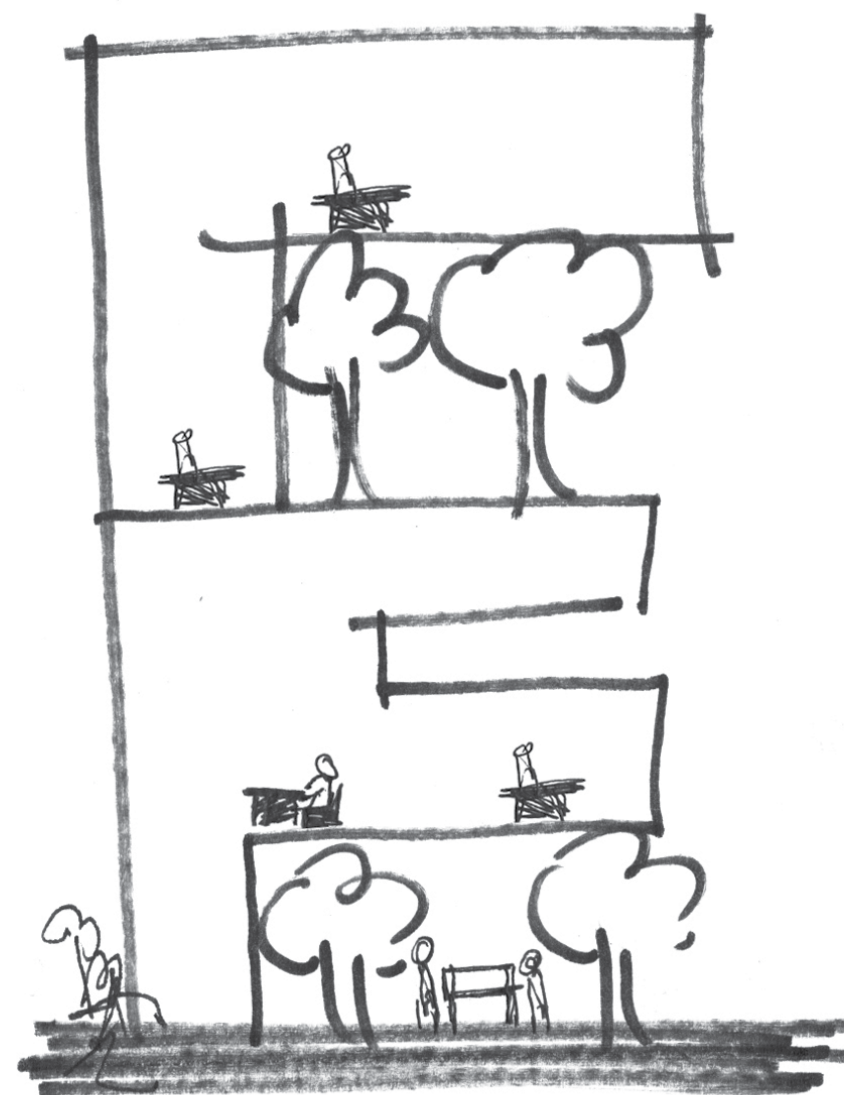
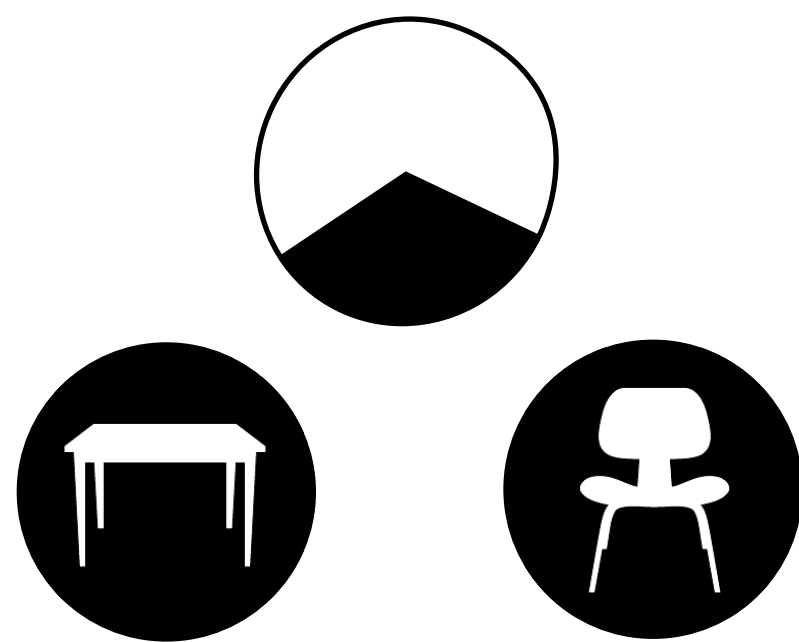
WHAT: SPATIAL BLOCKS WITH MULTIPLE PIECES OF PERSONAL EQUIPMENT TO MOBILE MINIMAL TECHNOLOGIES THAT CAN BE ACCESSED AND UTILIZED ANYTIME ANYWHERE.



2018



RIGID WORK SCHEDULE
FIXED LOCATIONS



FLEXIBLE WORK SCHEDULE
MOBILE LOCATIONS

