



Tracy Potter
Architecture + Design

101 Huntington Ave
Boston, MA 02199

tjp56@cornell.edu
508 . 965 . 9111

Project Name

PIKE PLACE: CENTER FOR THE ARTS

300 SOUTH SALINA ST.
SYRACUSE, NY 13202

Issue Date

12/11/2012

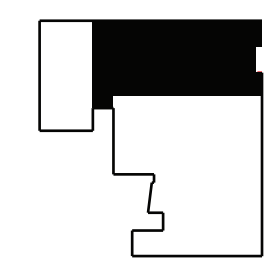
Notes

1. Refer to M.E.P plans for additional Power/Data Information
2. All single and double duplex outlets and telephone outlets to be mounted 18" AFF unless otherwise noted
3. All floor outlets to be flush mounted with finish floor unless otherwise noted
4. All data cables to use T3 fiber optic cable.
5. Power and data work will be installed by electrical and data subcontractors
6. Outlets above counter surfaces to be mounted at 6" above finished surface
7. All power/ data to be mounted 30" AFF
8. All outlets in B.O.H to be mounted 42" AFF

Legend

- North indication
- Room number and title
- Structural Lines

Key Plan: Pike Place



Scale

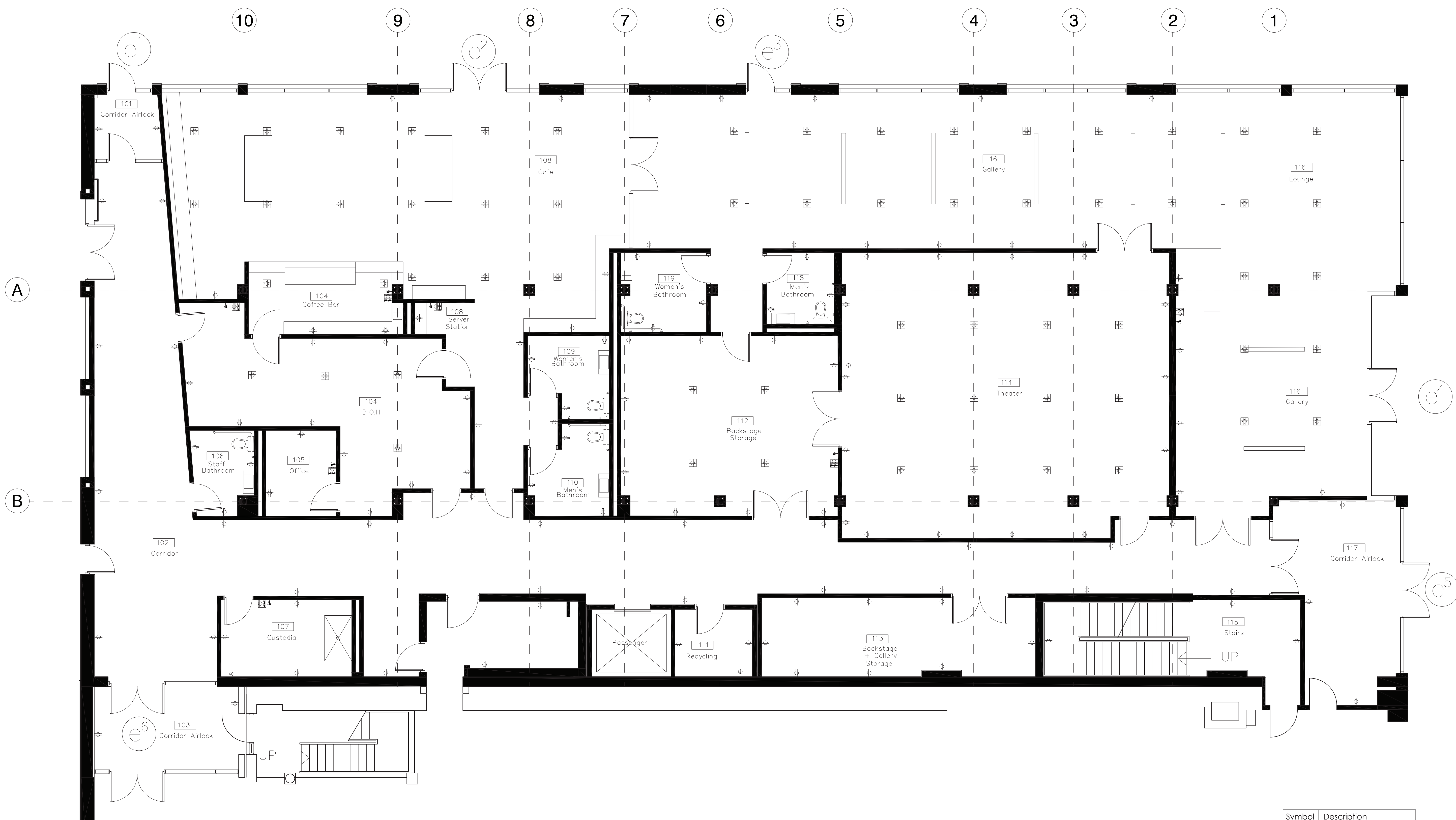
3/16" = 1'-0"

Drawing Title

First Floor Power/Data Plan

Drawing Number

A-3



| Symbol | Description |
|--------|---|
| | Wall mounted duplex receptacle, 18" AFF |
| | Wall mounted quadruplex receptacle, 18" AFF |
| | GFI duplex outlet, 18" AFF U.O.N for toilet rooms |
| | Flush floor mounted quadruplex receptacle |
| | Combination data and power duplex outlet |
| | Telephone and data outlet |
| | Junction box |

1 First Floor Power/Data Plan
A-3 Scale: 3/16" = 1'-0"

