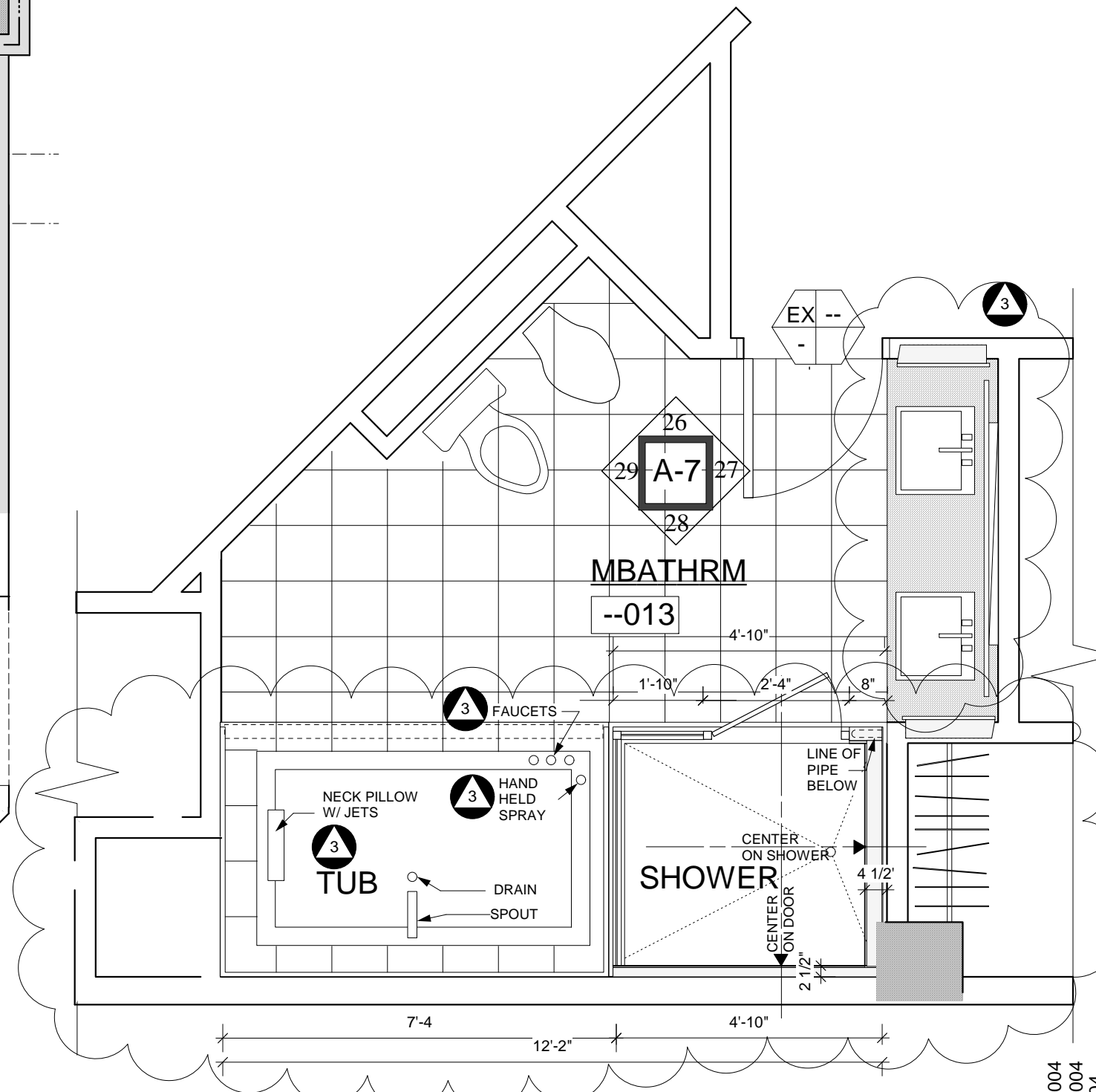


1 PARTIAL PLAN @ KIT / CABINERY
 SCALE 1/2"=1'-0"



2 PARTIAL PLAN @ MASTER BATH ROOM
 SCALE 1/2"=1'-0"

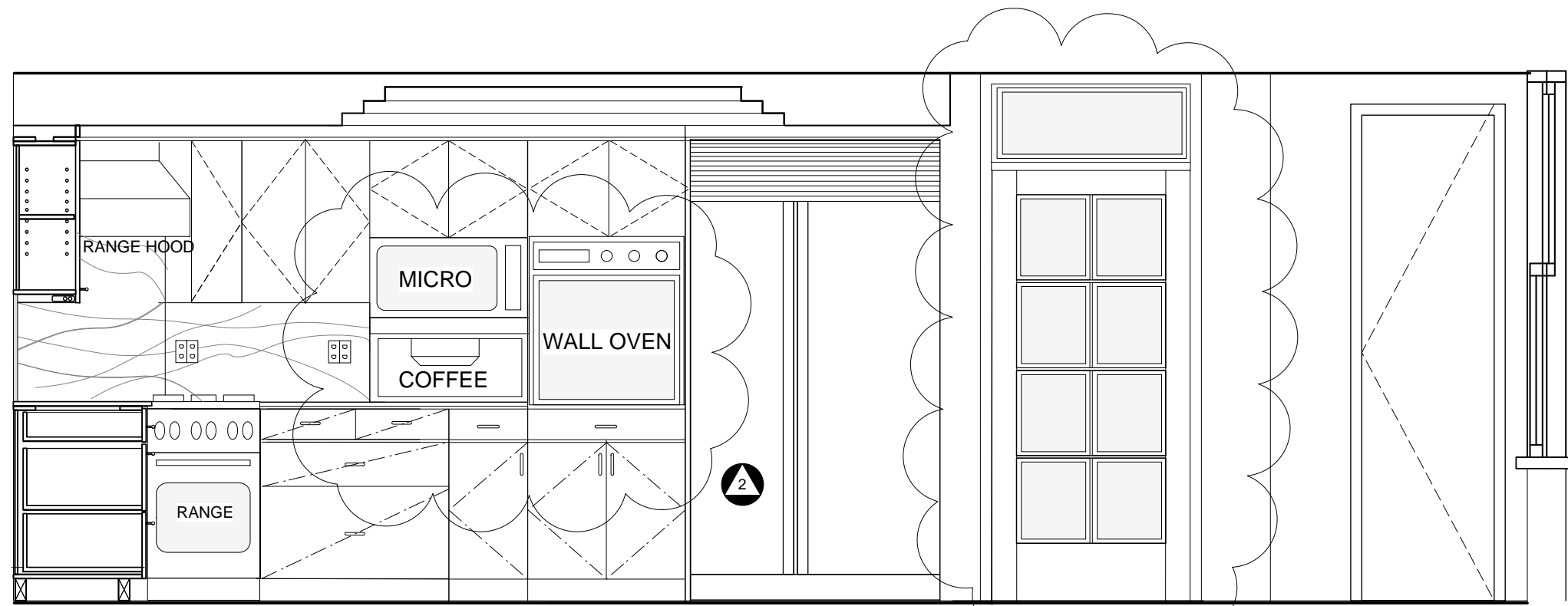
NOVEMBER 12, 2004
 NOVEMBER 08, 2004
 OCTOBER 18, 2004
 SEPTEMBER 21, 2004

| | | |
|--|---------------|----------|
| INDICATED RANGE HOOD. | | |
| 6 | MAR. 14, 2005 | |
| DIMENSIONED ISLAND AS PER FIELD COND. DIMENSIONED LIGHTS ABOVE ISLAND. | | |
| 5 | FEB. 16, 2005 | |
| ADDED MICROWAVE AND COFFEE APPLIANCES. | | |
| 4 | JAN. 19, 2005 | |
| REVISED FAUCET LOCATIONS AT TUB AND LAVS. | | |
| 3 | JAN. 19, 2005 | |
| 2 | DEC. 06, 2004 | |
| 1 | NOV. 12, 2004 | |
| No. | Date | Revision |

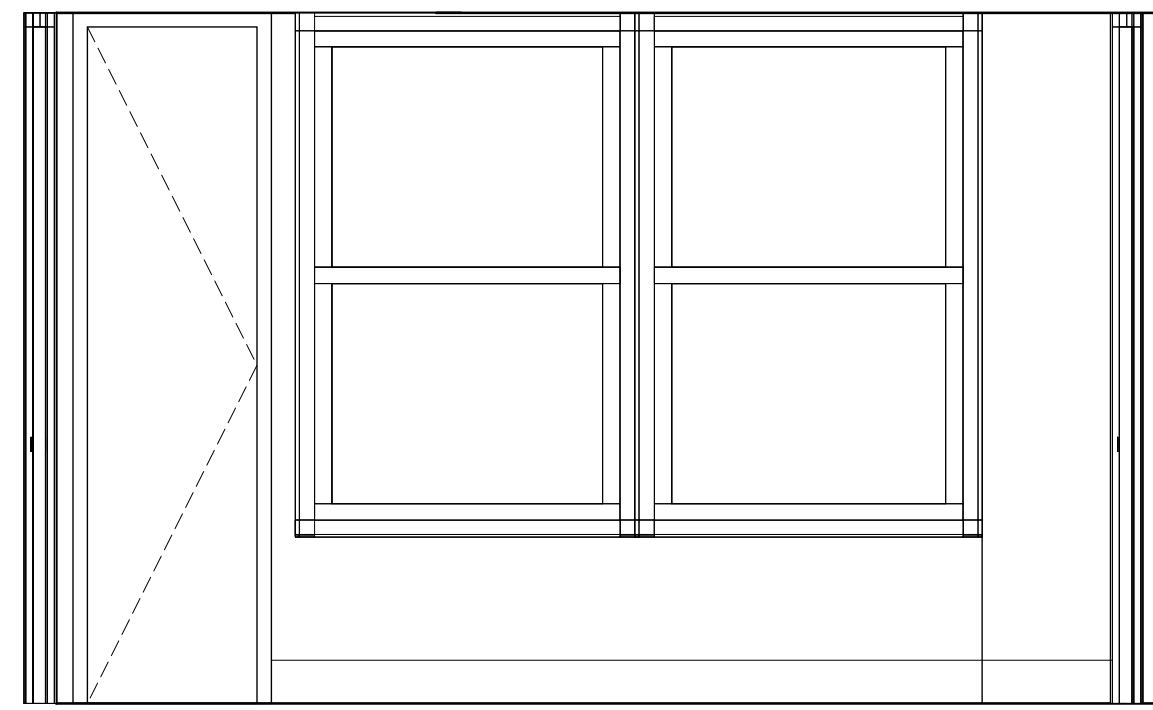
A-6

Date: SEPTEMBER 17, 2004 Scale: 1/2"=1'-0"
 Dwg. Title: KITCHEN & MBATHRM. PLAN
 Project: J08 # 1704
BERGER RESIDENCE
 900 PALISADE AVENUE
 FORT LEE, NJ
JAN ALLEN DIAMOND, ARCHITECT
 585 WEST END AVENUE
 NEW YORK, N.Y. 10024
 TEL: 212.877.4273 FAX: 212.721.7660





12 KITCHEN ELEVATIONS (@ North)
SCALE 1/2"=1'-0"



9 KITCHEN ELEVATIONS (@ East)
SCALE 1/2"=1'-0"

| | | |
|---|----------------|---|
| 3 | MARCH 23, 2005 | REVISED PANTRY DOORS |
| 2 | JAN. 26, 2005 | REVISED DOOR HTS TO 6'8". REVISED APPL. LOCATIONS. |
| 1 | DEC. 07, 2004 | |

| No. | Date | Revision |
|-----|------|----------|
|-----|------|----------|

A-7

Dwg. Title: KITCHEN INTERIOR ELEV.

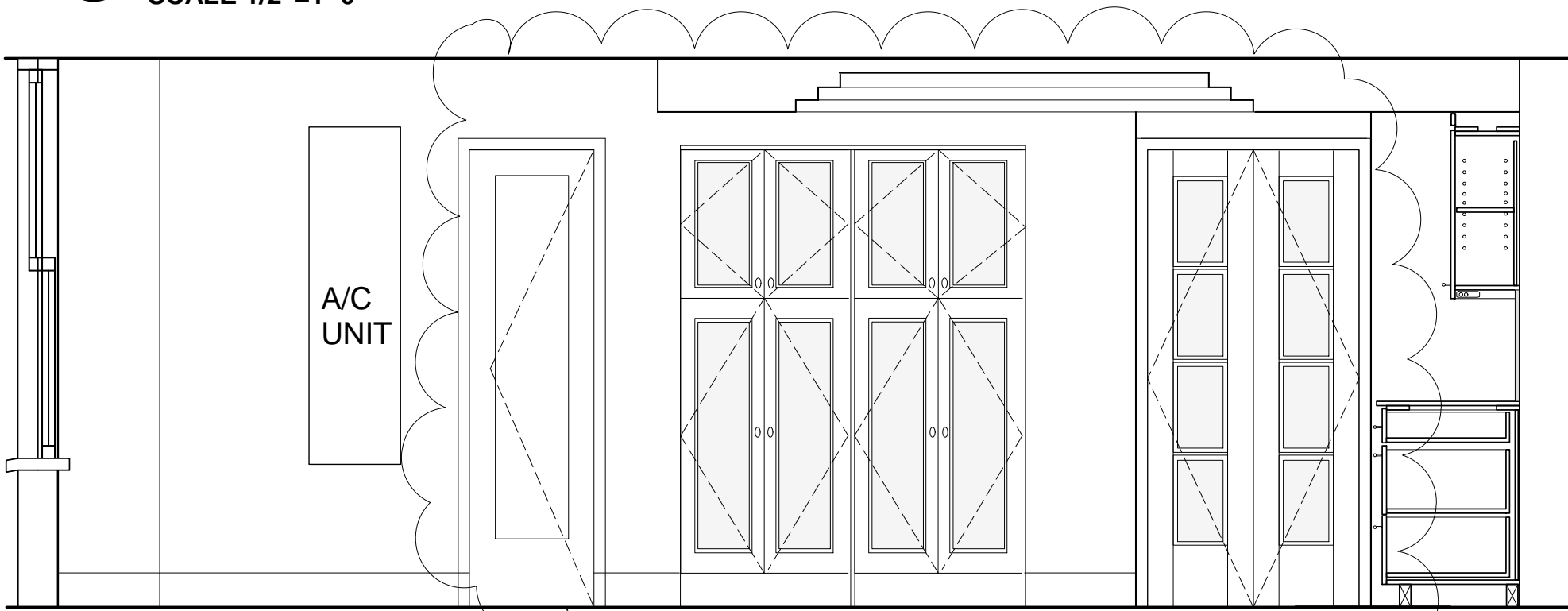
Project: JOB # 1704

BERGER RESIDENCE
900 PALISADE AVENUE
FORT LEE, NJ

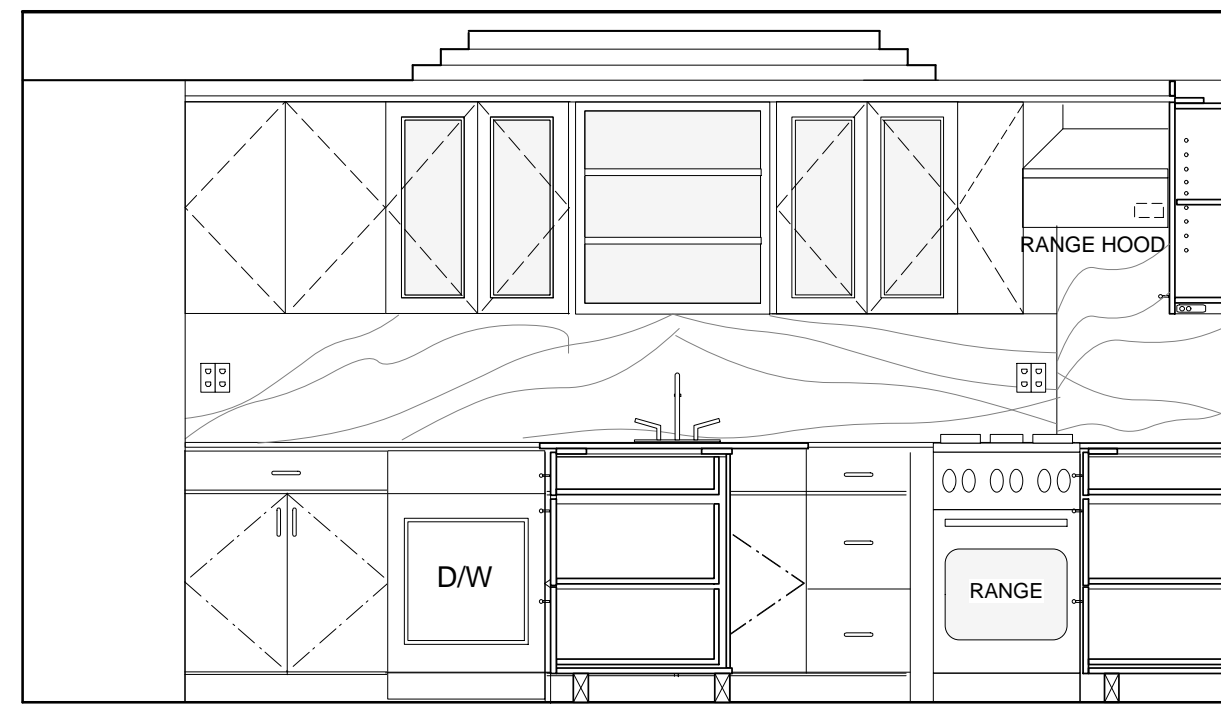
Date: SEPTEMBER 17, 2004 Scale: 1/2"=1'-0"

JAN ALLEN DIAMOND, ARCHITECT

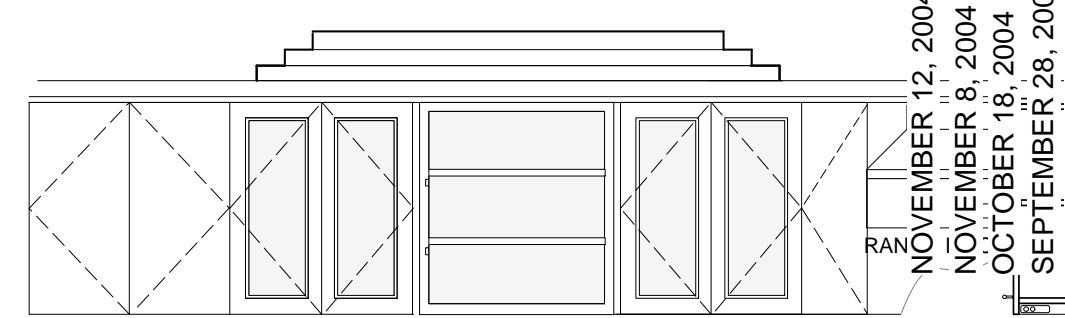
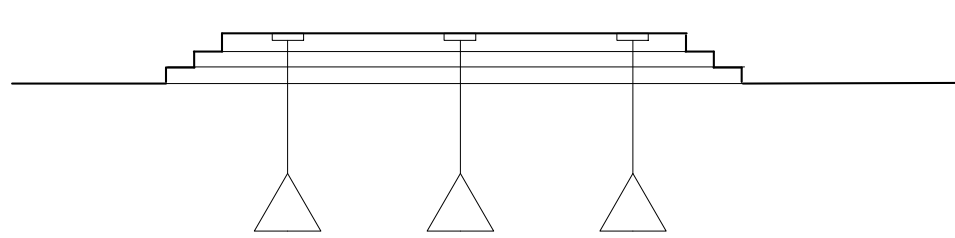
585 WEST END AVENUE
NEW YORK, N.Y. 10024
TEL: 212.877.4273 FAX: 212.721.7660



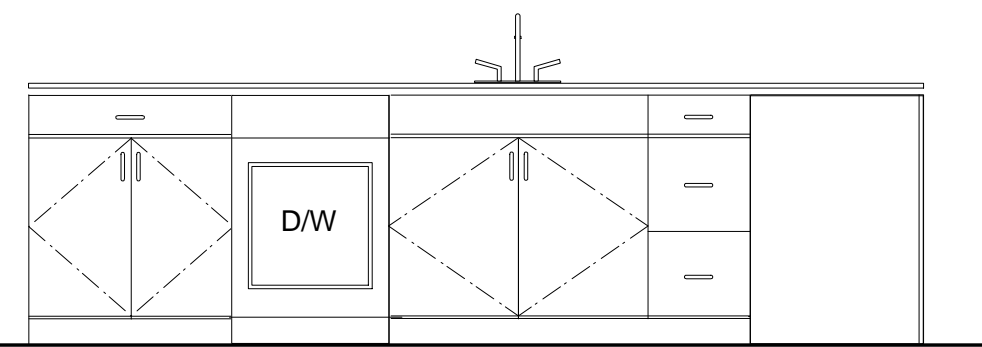
10 KITCHEN ELEVATIONS (@ South)
SCALE 1/2"=1'-0"



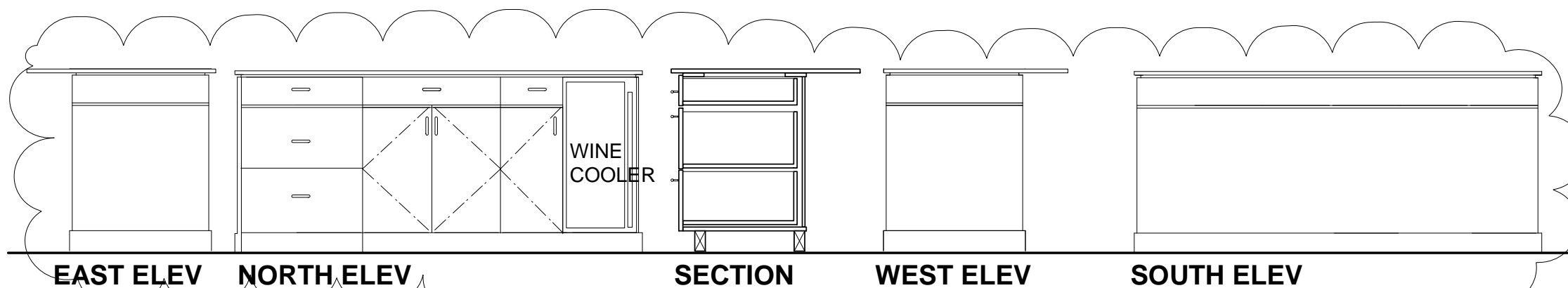
11 KITCHEN ELEVATIONS (@ West) 3
SCALE 1/2"=1'-0"



NOVEMBER 12, 2004
NOVEMBER 8, 2004
OCTOBER 18, 2004
SEPTEMBER 28, 2004
SEPTEMBER 21, 2004



12 KIT. ELEV. FORWARD OF ISLAND (@ West)
SCALE 1/2"=1'-0"



12 ISLAND ELEVATIONS
SCALE 1/2"=1'-0"