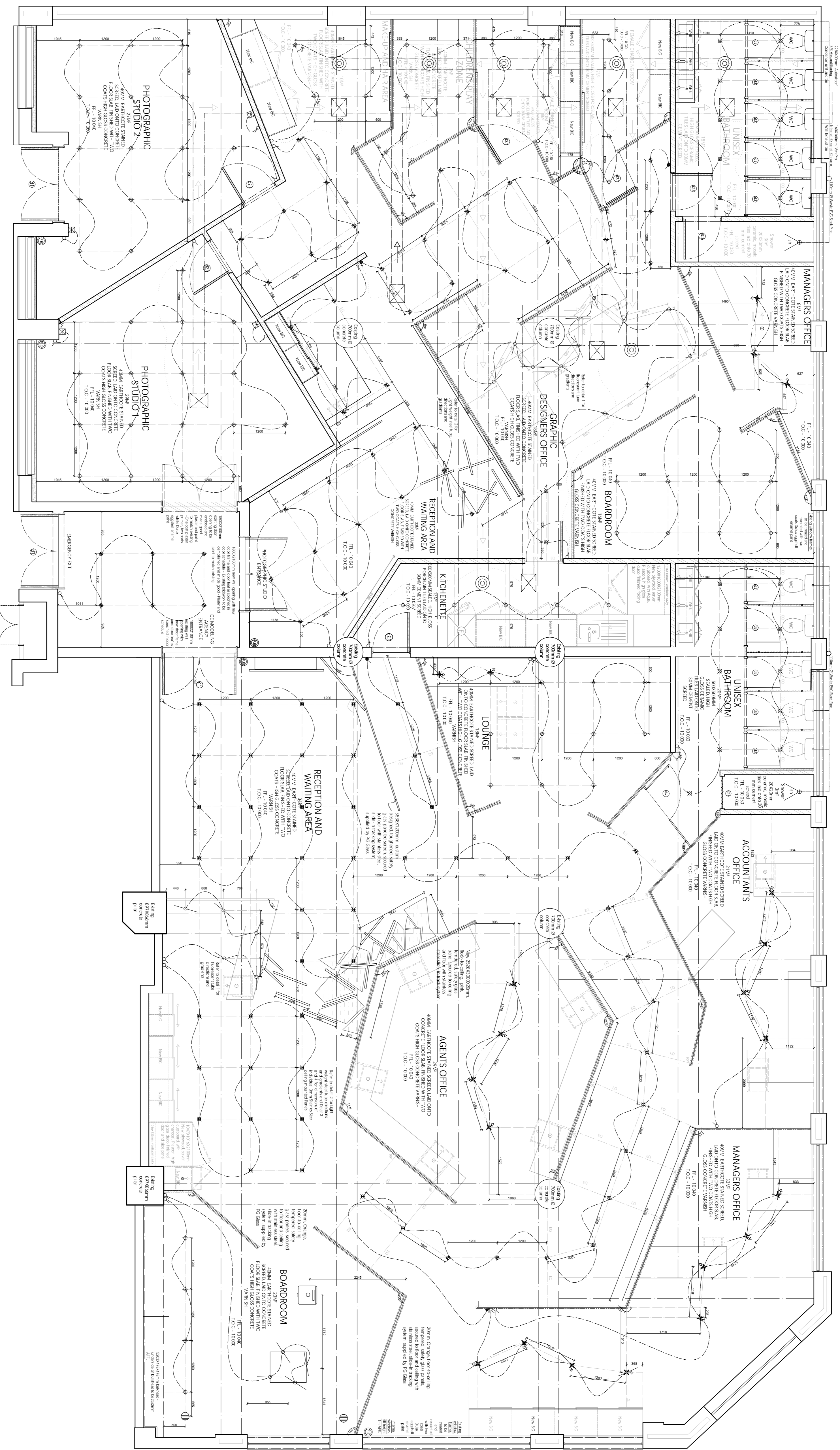


NOTES

- Ceiling**
Ceiling is to be lowered using 3/8" studs. Lowered ceiling height to be 2300mm in shop 300mm from walls with windows.
- Light Switches**
The top of all light switches is to be at a height of 1300mm AFTL.
- Copyright**
Copyright over all designs and drawings shall remain the property of Lured By Lurie Design and remain the copyright and no. 63 of 1965 is hereby specifically excluded.
- General**
All relevant details, look and dimensions are to be checked on site prior to commencement of project. The designer is to be brought to the attention of the designer.
All dimensions are given in millimeters. Make use of allocated dimensions rather than measuring the drawing.
All materials, fittings, furnishings, etc. that are specified in accordance with the National Building Regulations and local authority requirements, shall be specified in the drawing. All materials are to be laid, leaved, sealed and fixed in strict accordance with the specifications.

Before hand-over, the contractor is to check that everything works smoothly and according to plan. If any adjustments are necessary, they are to be made before hand-over.



Ceiling and Lighting Plan - Scale 1:50

- LEGEND**
- Single Fluorescent Downlighter
 - Hydrex 200W Studio Downlighter
 - Adjustable Ww. Track Lighting System
 - 3000/3000 Ceiling-Mounted Audio Speaker
 - 1-way Non-dimmable light switch
 - 1-way Dimmable light switch
 - 2-way Non-dimmable light switch
 - 2-way Dimmable light switch
 - 13W, 200V, 280mm Fluorescent tube
 - Single, Dimmed Metal Halide Downlighter

- Circular Indicator
- Ventilation Grate - Lined up to light switch
- 2500x250mm Stainless Steel Extractor Fan
- 150mm Ø Stainless Steel Airconditioning Vents
- Existing 480x270mm concrete beams
- Existing 480x270mm concrete beams
- Stainless Steel track system for glass wall panel support. To be 15mm Ø Light weight steel RIS tube, painted with two coats of primer and top coat of special paint. (Supplier specification)

- 2500x250mm Stainless Steel Extractor Fan and Air Conditioning Duct
- 125mm Ø Ribs Stainless Steel Airconditioning Vents
- 125mm Ø Ribs Stainless Steel Airconditioning Vents
- Existing 480x270mm concrete beams
- Stainless Steel track system for glass wall panel support. To be 15mm Ø Light weight steel RIS tube, painted with two coats of primer and top coat of special paint. (Supplier specification)
- 3mm Stainless steel panel, finished with Rose Pink Pliscan, High gloss, 50% PC Panel

Designer: Carl Lurie
 Date: 4.07.2012
 Project: Ice Modelling Agency
 Drawing Number: 11.13

