

# MSJC Beit Midrash Re-INVISIONED

Presented By:

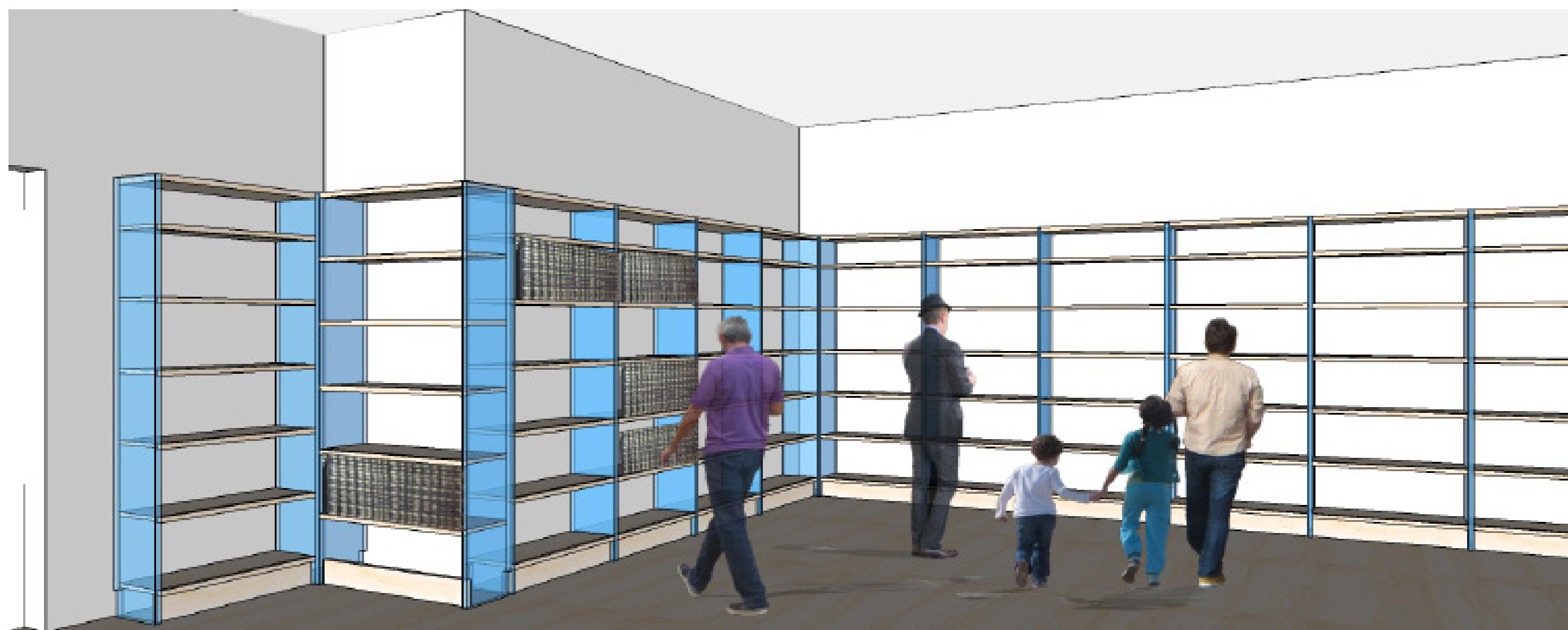
## Community Space REHAB

Founder/Principal Designer  
Solomon Siegel  
Chanans1983@gmail.com  
614.313.0137

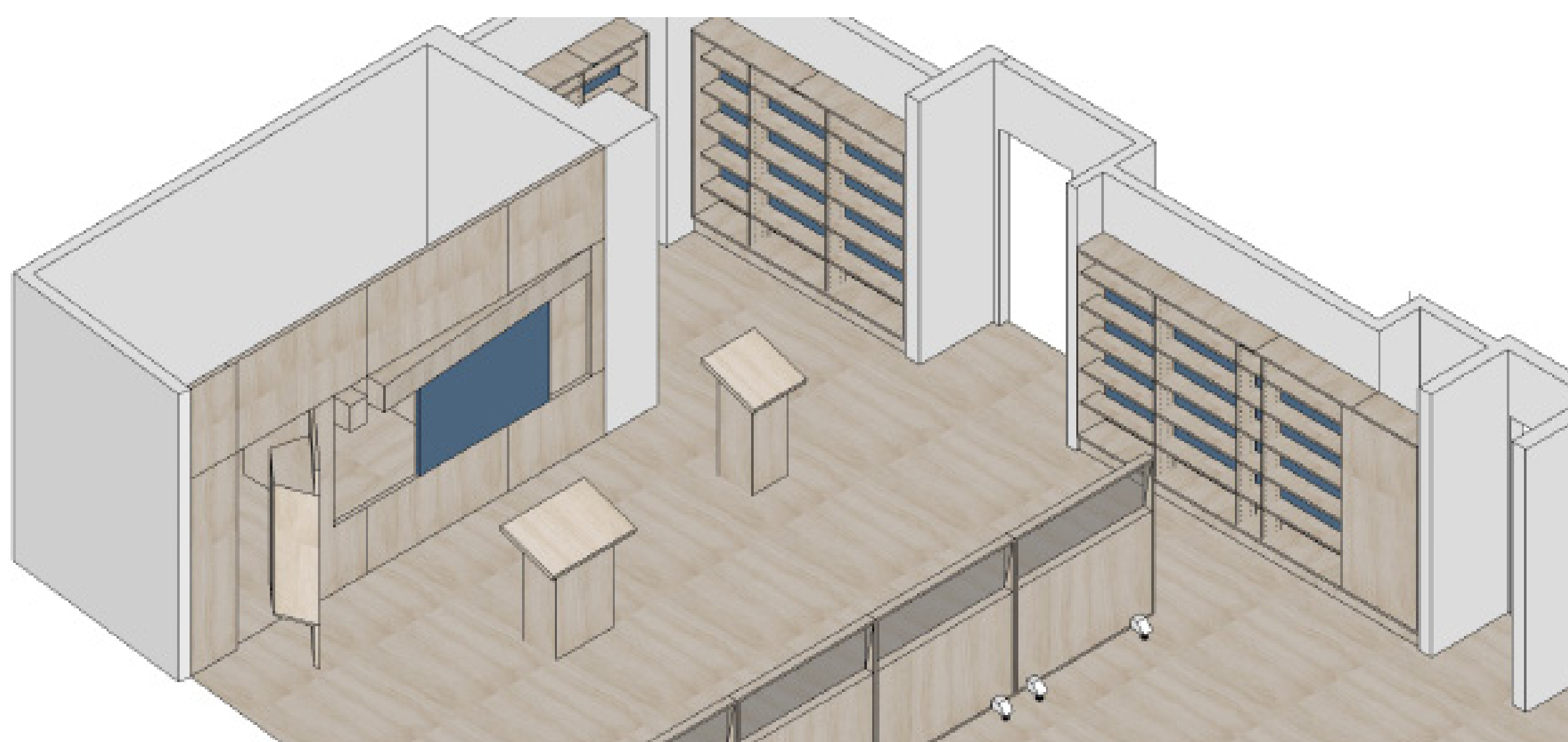
Partner/ Design Consultant  
Maya Itenberg  
mayaitenberg@gmail.com  
201.281.9203



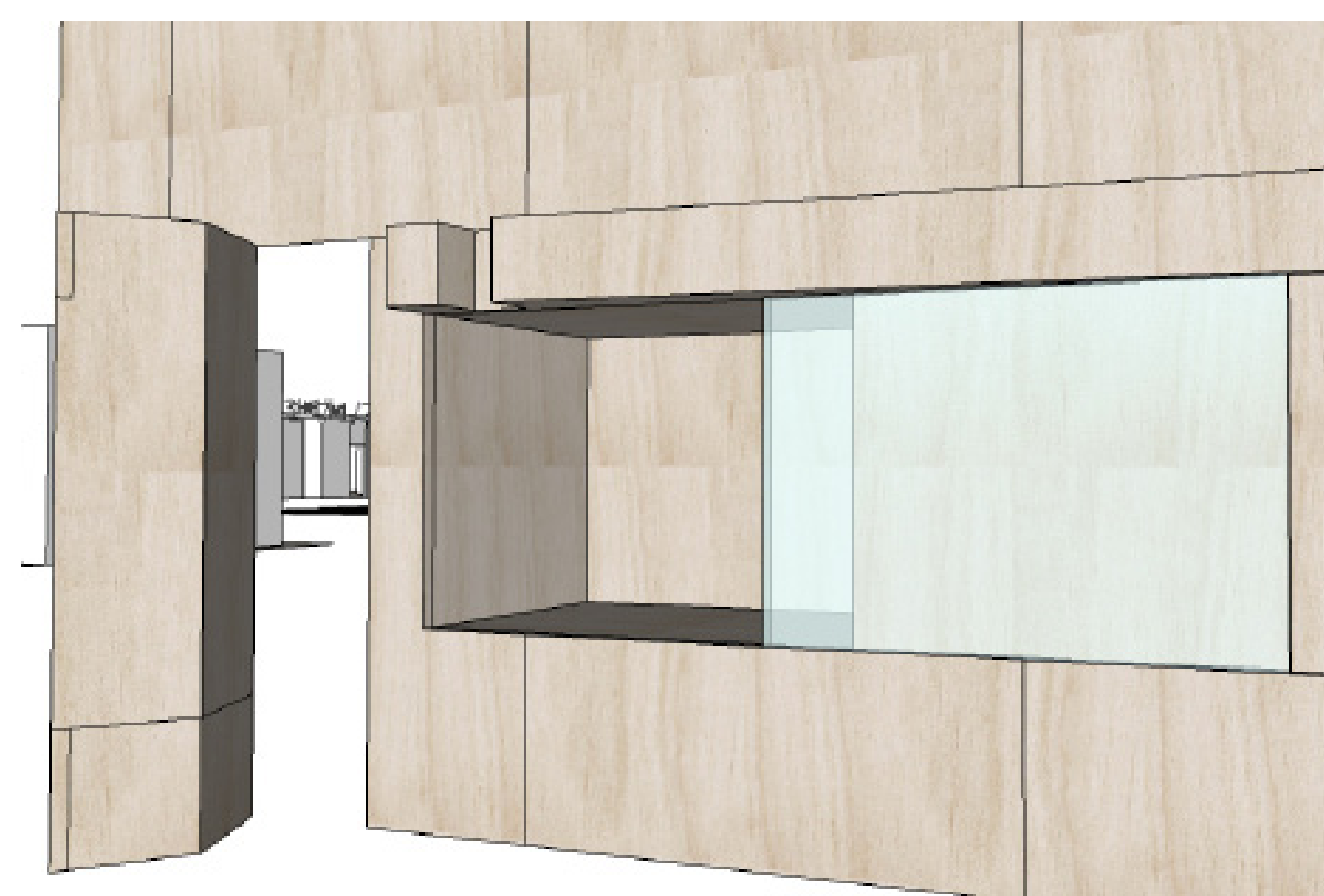
▲ The Aharon Kodesh, located on the eastern wall will be the focal point of the space. Designed to be a floor to ceiling sheer wall, we will carve out spaces for the Aharon and the Rabbi's seat. This will also create a new storage option by forming a room behind the Aharon. The Rabbi's seat will act as a secret door opening up into the back of the Aharon, which will be populated with shelves and storage space. The Aharon sheer wall will be made out of a single panel of CLT ( Cross Laminated Timber). CLT is an engineered wood product that is ideal for large scale structural paneling and provides excellent strength and durability to the design.



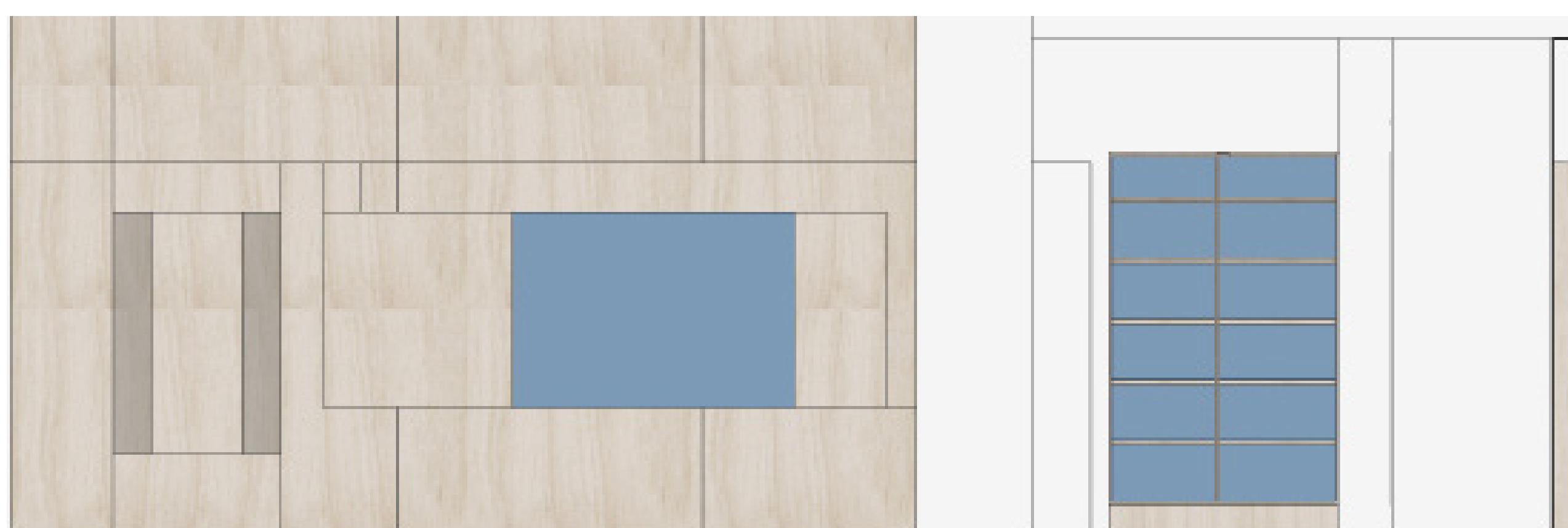
► Custom shelving will be located on the southern and western walls. The shelving design will take advantage of digital fabrication techniques to provide a cost effective and reliable shelving system that can accommodate the communities growing book collection.



Schematic Beit Midrash layout including mechtiza, aharon, shulchan, schtender, and shelving system.



Close-up of the Aharon wall with Rabbi's seat open.



Elevation of the Aharon wall.

COMING SOON...