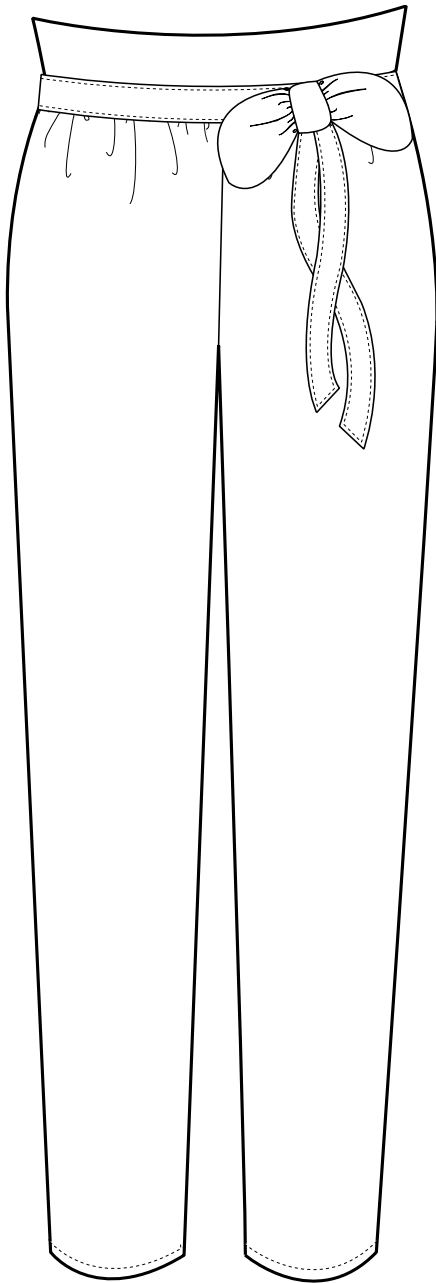


Coral Reef

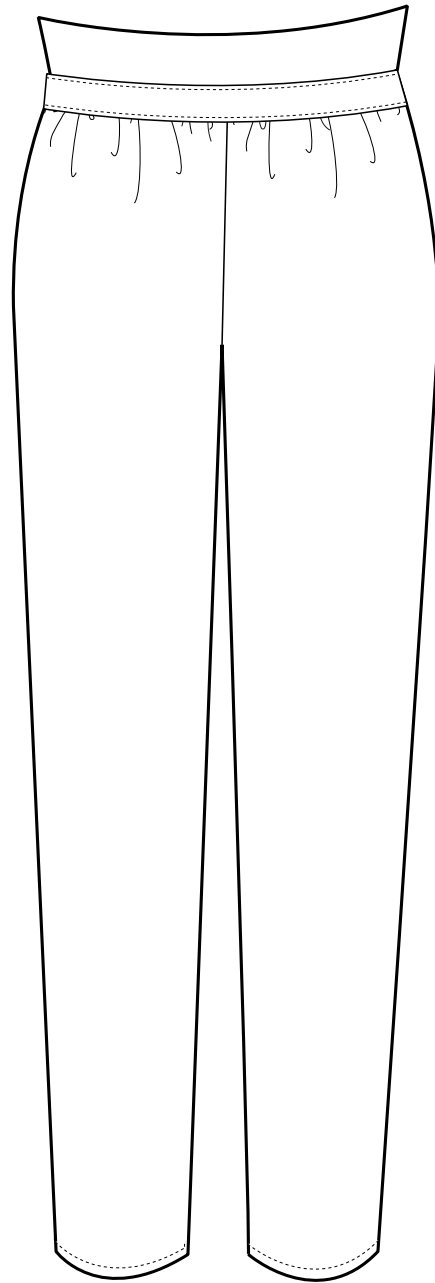
Style Summary Sheet

Description: Paper Bag Trousers	Style #: 018	Season: Fall 2013
Designer: Morgan Gaffney	Division: Women's casual wear	Estimate: \$45
Brand: Coral Reef	Size Category: Women	Create Date: 04/30/13
Fabric Category: Satin	Size Range: S,M,L	Due Date: 09/09/13
Color: Coral, Royal, Violet	Sample Size: M	Ship Date: 09/30/13

Front



Back



Description: Loose trouser pant with tie paperbag waist

Coral Reef

Materials Specifications

Description: Paper Bag Trousers Designer: Morgan Gaffney Brand: Coral Reef Fabric Category: Satin Color: Coral, Royal, Violet	Style #: 018 Division: Women's casual wear Size Category: Women Size Range: S,M,L Sample Size: M	Season: Fall 2013 Estimate: \$45 Create Date: 04/30/13 Due Date: 09/09/13 Ship Date: 09/30/13
-------------------------------------------------------------------------------------------------------------------------------------------	--------------------------------------------------------------------------------------------------------------	-----------------------------------------------------------------------------------------------------------

Description	Use	Material	Width / Size	Unit	Qty
Satin	Shell	Polyester	44"	yd.	3 1/8
Interfacing	Interfacing	Fusible Interfacing	36"	yd.	1/8
Thread		Poly/Cotton, 60/40	1	spool	3/4

Coral Reef

Assembly

Description: Paper Bag Trousers	Style #: 018	Season: Fall 2013
Designer: Morgan Gaffney	Division: Women's casual wear	Estimate: \$45
Brand: Coral Reef	Size Category: Women	Create Date: 04/30/13
Fabric Category: Satin	Size Range: S,M,L	Due Date: 09/09/13
Color: Coral, Royal, Violet	Sample Size: M	Ship Date: 09/30/13

Tasks:

Sew side seams pant legs

Sew crotch seam

Roll top of pants down to make waistband

Add interfacing

Sew waistband down

Fold waist tie in half horizontally and stitch edges

Hem

Costing Specification

Description: Paper Bag Trousers Designer: Morgan Gaffney Brand: Coral Reef Fabric Category: Satin Color: Coral, Royal, Violet	Style #: 018 Division: Women's casual wear Size Category: Women Size Range: S,M,L Sample Size: M	Season: Fall 2013 Estimate: \$45 Create Date: 04/30/13 Due Date: 09/09/13 Ship Date: 09/30/13
-------------------------------------------------------------------------------------------------------------------------------------------	--------------------------------------------------------------------------------------------------------------	-----------------------------------------------------------------------------------------------------------

Fabric	Yds	Price	Cost
Polyester 44" wide	3 1/8	\$4.99	###
Interfacing	1/8	\$2.99	###
Total			###

Trim	Yds	Price	Cost
Thread	187.5	\$2.99	###
Total			###

Labor	Cost/hr	Hours	Cost
Sewing	\$7.25	4	\$29
Cutting	\$7.25	0.5	###
Total			###

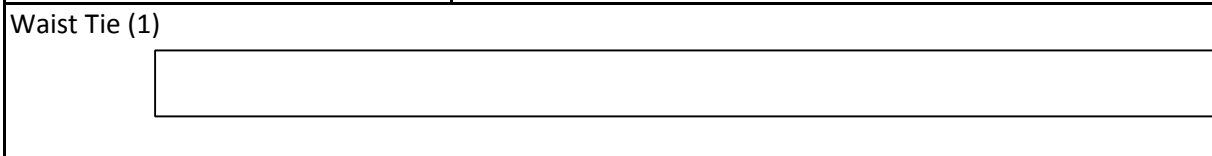
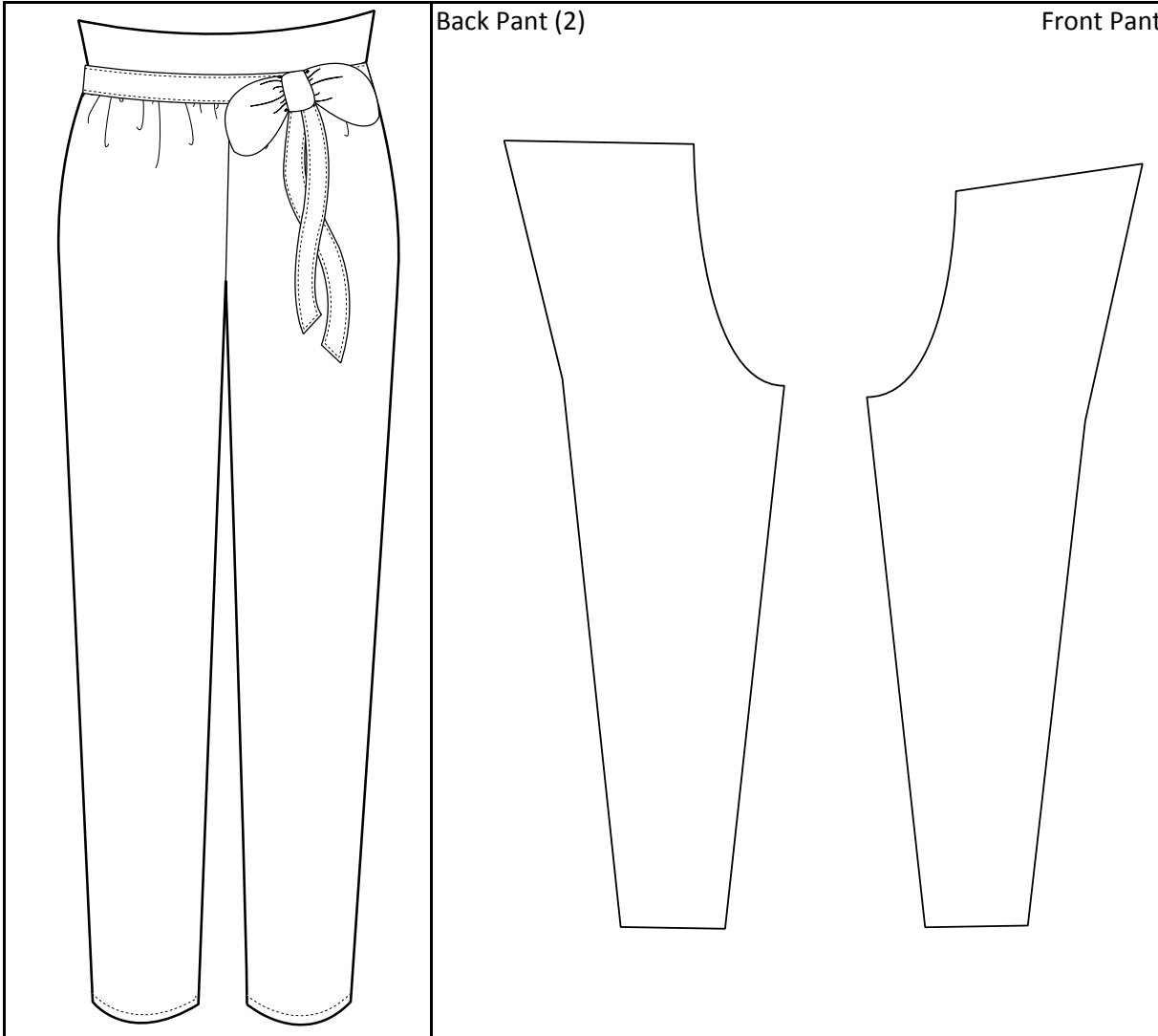
Total Manufacturing Cost: \$50.83



Coral Reef

Pattern Block Identification

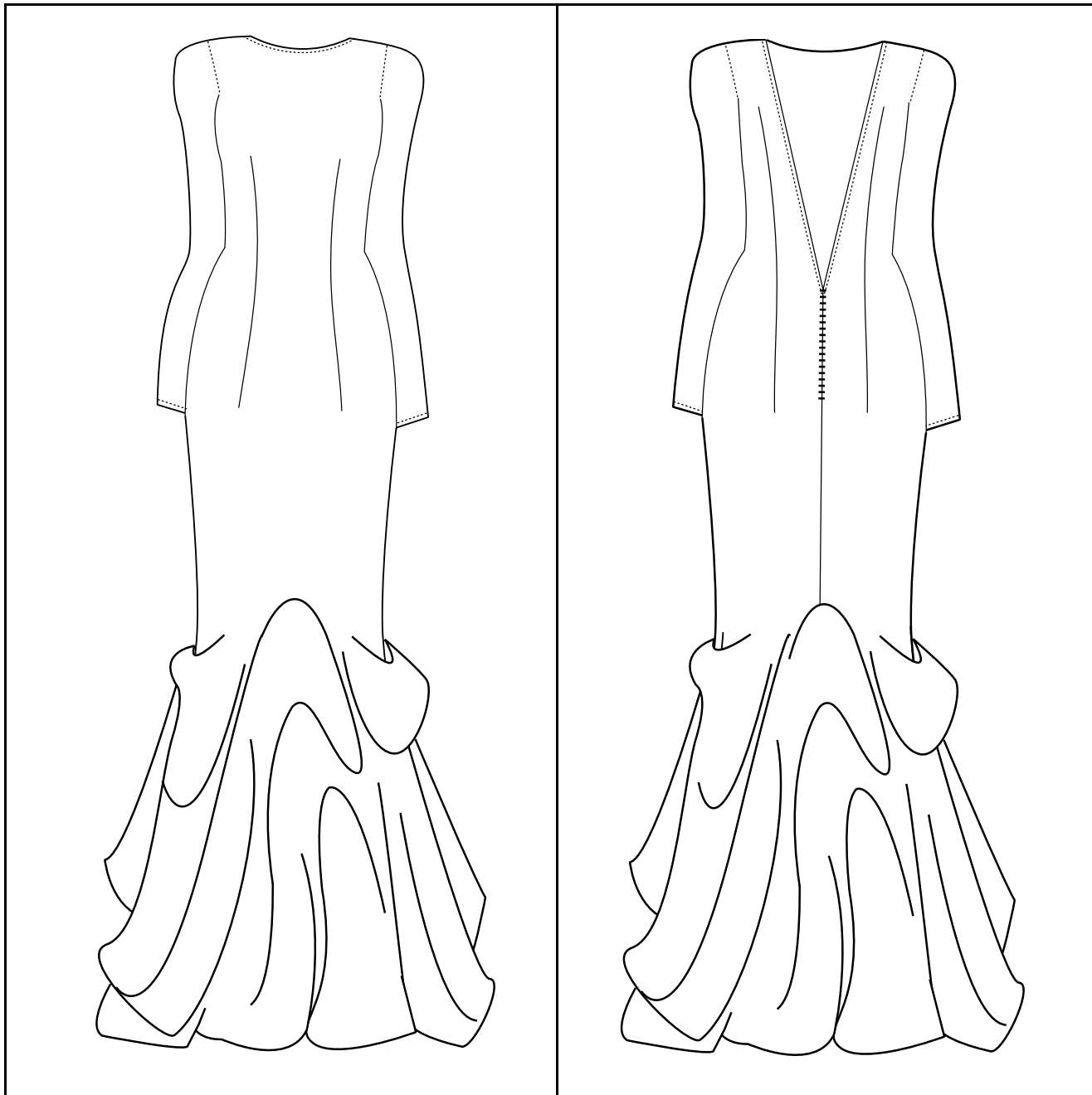
Description: Paper Bag Trousers	Style #: 018	Season: Fall 2013
Designer: Morgan Gaffney	Division: Women's casual wear	Estimate: \$45
Brand: Coral Reef	Size Category: Women	Create Date: 04/30/13
Fabric Category: Satin	Size Range: S,M,L	Due Date: 09/09/13
Color: Coral, Royal, Violet	Sample Size: M	Ship Date: 09/30/13



Coral Reef

Style Summary Sheet

Description: Open Back Evening Dress	Style #: 019	Season: Fall 2013
Designer: Morgan Gaffney	Division: Women's evening wear	Estimate: \$450
Brand: Coral Reef	Size Category: Women	Create Date: 04/30/13
Fabric Category: Brocade, Organza	Size Range: 2-12	Due Date: 09/09/13
Color: Gold and Silver	Sample Size: 8	Ship Date: 09/30/13



Description: Open-back, full length evening dress with organza detail on bottom.

Coral Reef

Materials Specifications

Description: Open Back Evening Dress Designer: Morgan Gaffney Brand: Coral Reef Fabric Category: Brocade, Organza Color: Gold and Silver	Style #: 019 Division: Women's evening wear Size Category: Women Size Range: 2-12 Sample Size: 8	Season: Fall 2013 Estimate: \$450 Create Date: 04/30/13 Due Date: 09/09/13 Ship Date: 09/30/13
------------------------------------------------------------------------------------------------------------------------------------------------------	--------------------------------------------------------------------------------------------------------------	------------------------------------------------------------------------------------------------------------

Description	Use	Material	Width/Size	Unit	Qty
Brocade	Shell	50% Polyester, 50% Nylon	54/56"	yd.	3 1/2
Organza	Shell	Polyester	44	yd.	5
Zipper	Closure	Polyester	7	in.	1
Hook/Eye	Closure	Metal	5/16, 1/4	in.	1
Thread		Poly/Cotton, 60/40	250	yd.	3/4

Coral Reef

Assembly

Description: Open Back Evening Dress	Style #: 019	Season: Fall 2013
Designer: Morgan Gaffney	Division: Women's evening wear	Estimate: \$450
Brand: Coral Reef	Size Category: Women	Create Date: 04/30/13
Fabric Category: Brocade, Organza	Size Range: 2-12	Due Date: 09/09/13
Color: Gold and Silver	Sample Size: 8	Ship Date: 09/30/13

Tasks:

- Serge around all pattern pieces
- Sew side seams
- Sew sleeves
- Insert invisible zipper
- Sew center back seam
- Finish V-back edges
- Sew elastic into v-back
- Sew hook and eye above zipper
- Add shoulder pads
- Tack organza in place
- Hem

Costing Specification

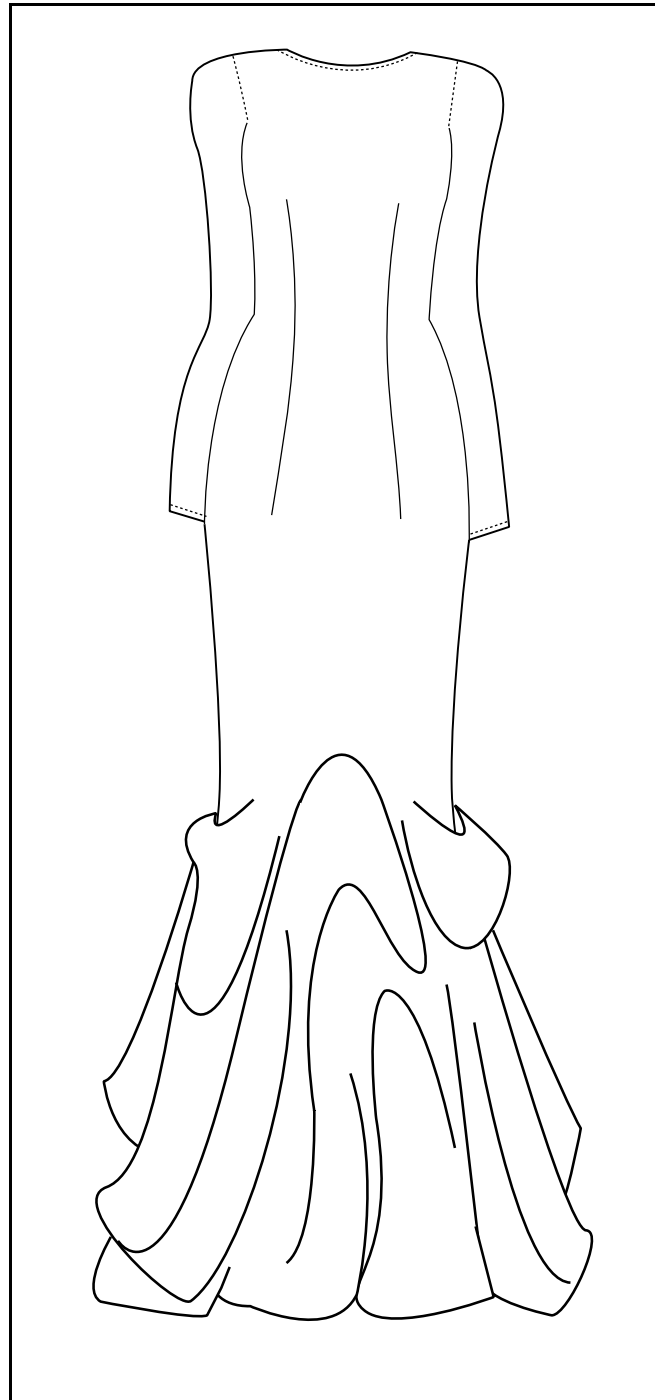
Description: Open Back Evening Dress Designer: Morgan Gaffney Brand: Coral Reef Fabric Category: Brocade, Organza Color: Gold and Silver	Style #: 019 Division: Women's evening wear Size Category: Women Size Range: 2-12 Sample Size: 8	Season: Fall 2013 Estimate: \$450 Create Date: 04/30/13 Due Date: 09/09/13 Ship Date: 09/30/13
------------------------------------------------------------------------------------------------------------------------------------------------------	--------------------------------------------------------------------------------------------------------------	------------------------------------------------------------------------------------------------------------

Fabric	Yds	Price	Cost
Brocade, 54/56" wide	3 1/2	\$19.99	\$69.97
Organza, 44" wide	5	\$4.99	\$24.95
Total			\$94.92

Finding	Yds/Sz	Price	Cost
Thread 250 yd/pkg	187.5	\$1.69	\$1.27
Zipper - 7" lon		\$3.25	\$3.25
Hook/eye, 50 per pkg	5/16, 1/4	\$1.99	\$0.04
Total			\$4.56

Labor	Cost/hr	Hours	Cost
Sewing	7.25	6 3/4	48.94
Cutting	7.25	1	7.25
Total			\$56.19

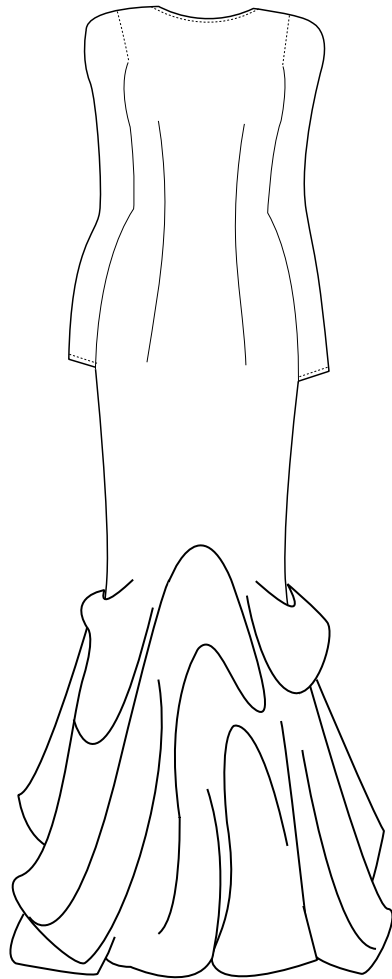
Total Manufacturing Cost \$155.67



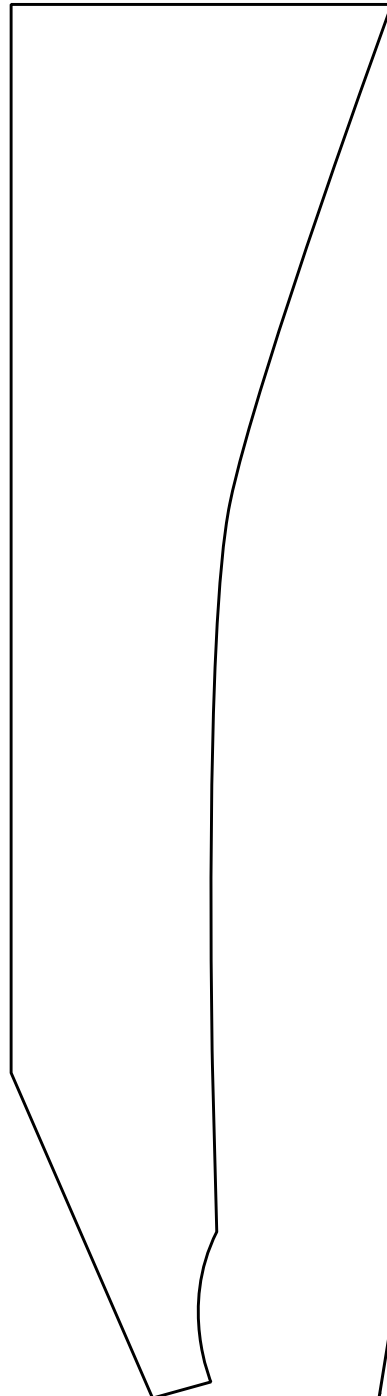
Coral Reef

Pattern Block Identification

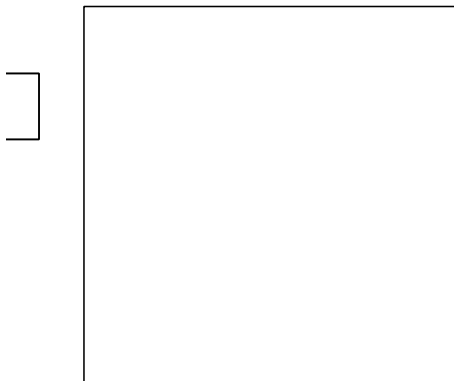
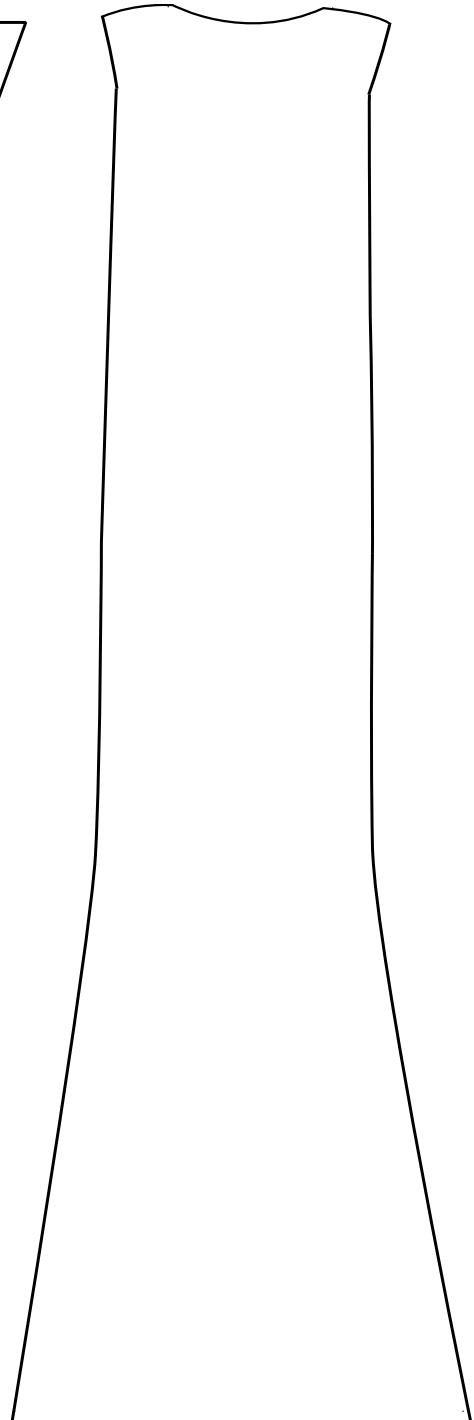
Description: Open Back Evening Dress	Style #: 019	Season: Fall 2013
Designer: Morgan Gaffney	Division: Women's evening wear	Estimate: \$450
Brand: Coral Reef	Size Category: Women	Create Date: 04/30/13
Fabric Category: Brocade, Organza	Size Range: 2-12	Due Date: 09/09/13
Color: Gold and Silver	Sample Size: 8	Ship Date: 09/30/13



Back (2)



Front (1)



Detail (8)