

# Retail/Restaurant Vertical



**Surg Protection**  
Full line of surge protection devices to protect your commercial grade appliances



**ICUBE™**  
Adaptive defrost module for commercial walk-in coolers and freezers



**Occupancy and Vacancy Sensors**  
Light hallways, storage areas, coat rooms, banquet rooms and restrooms as needed



**Lightmaster™ Series**  
Daylight control delivers additional savings



**Water feature controls**  
Easy efficient control of fountains and water features



**talento smart**  
Time switch for programming of your lighting systems with a mobile app



**Electronic Controls**  
Electronic time controller for Interior/Exterior Lighting



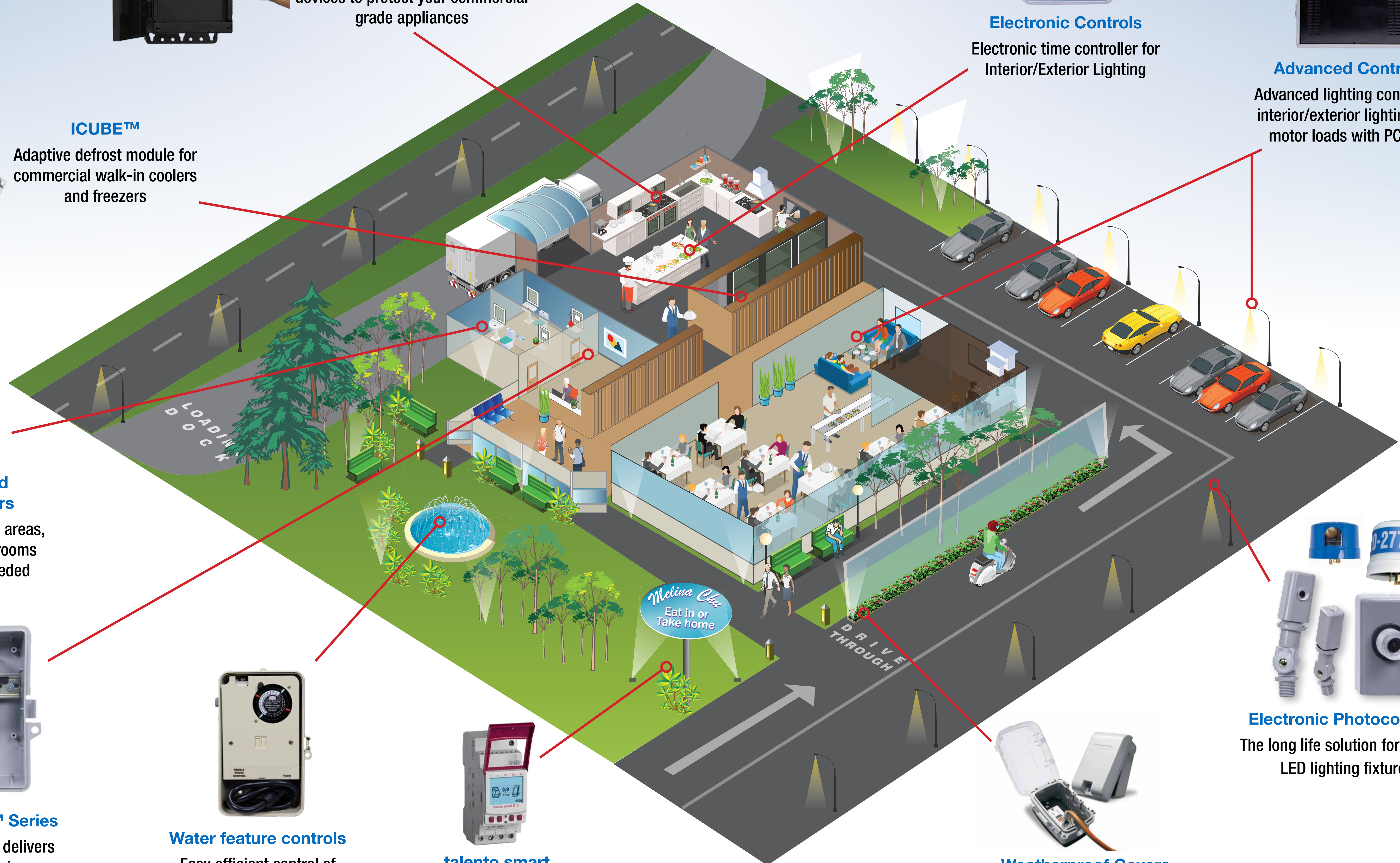
**Advanced Controls**  
Advanced lighting control for interior/exterior lighting and motor loads with PC app



**Electronic Photocontrols**  
The long life solution for exterior LED lighting fixtures



**Weatherproof Covers**  
Protect exterior outlets and interior outlets in wet areas with the most versatile and durable covers on the market



# Education Vertical



## Advanced Controls

Advanced lighting control for interior/exterior lighting and motor loads with PC app



## Water Feature Controls

Easy efficient control of fountains and water features



## Mechanical Controls

The most basic, easy to use lighting/load control



## Surge Protection

The reliable, affordable protection for valuable equipment



## Lightmaster™ Series

Daylight control delivers additional savings



## talento smart

Time switch for programming of your lighting systems with a mobile app



## Occupancy and Vacancy Sensors

Light hallways, classrooms, offices, storage areas, and restrooms as needed



## Weatherproof Covers

Protect exterior outlets and interior outlets in wet areas with the most versatile and durable covers on the market



## Electronic Photocontrols

The long life Ssolution for exterior LED Lighting fixtures



## Electronic Controls

Electronic time controller for interior/exterior lighting



# Municipality Vertical



**Electronic Controls**  
Electronic time controller for interior/exterior lighting



**Mechanical Controls**  
The most basic, easy to use lighting/load control



**Advanced Controls**  
Advanced lighting control for Interior/Exterior lighting and motor loads with PC app



**Surge Protection**  
The reliable, affordable protection for valuable equipment



**Weatherproof Covers**  
Protect exterior outlets and interior outlets in wet areas with the most versatile and durable covers on the market



**Electronic Photocontrols**  
The long life solution for exterior LED Lighting fixtures



**talento smart**  
Time switch for programming of your lighting systems with a mobile app



**Occupancy and Vacancy Sensors**  
Light hallways, offices, conference rooms storage areas, and restrooms as needed



**Lightmaster™ Series**  
Daylight control delivers additional savings