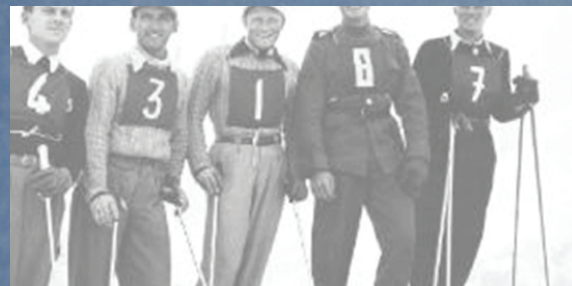
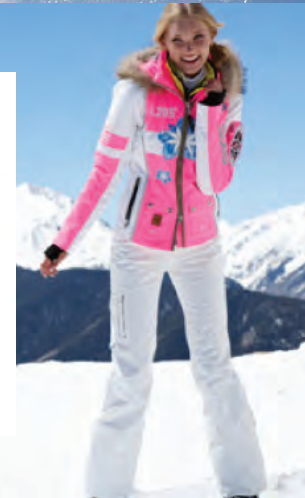
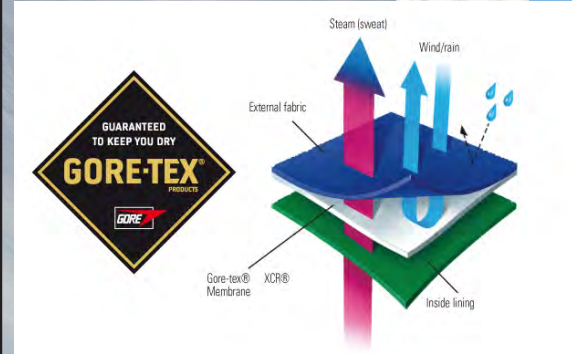


# Evolution of Women's Ski Wear

By Ashley Anderson



Past

Present

**The Past:** Humans put boards on their feet and began sliding across snow clear back in the Stone Age. By the late 1800s modern skiing had developed. By the 1920s skiing was quickly becoming popular, affecting the economy and fashion internationally. In the 20s a woolen split skirt was worn, but by the 30s women wore trousers similar to men. The jacket was peplum shape, designed for warmth and to be flattering to the body. Ski pants were commonly made of wool gabardine. By the 50s stirrup foot stretch pants became popular and by the 70s wool was rarely used as synthetics were common.

**The Present:** Today fabrics have continued to evolve. Clothing is more comfortable and functional, as well as colorful and attractive. Gore-Tex and other materials containing various polyesters continue the evolution of the industry as ski apparel becomes lighter, water proof, breathable and streamlined.