

Lily Pad Daycare Center

ADA Design
Sustainable Design
Universal Design
Design for Autism

Project: Daycare Design for Children
with Autism
Concept: Lily Pad

Designer: Angela Carlson
Professor: Bischoff
Class: ID102 Studio I
Date: May 15, 2014
Sheet 1 of 6

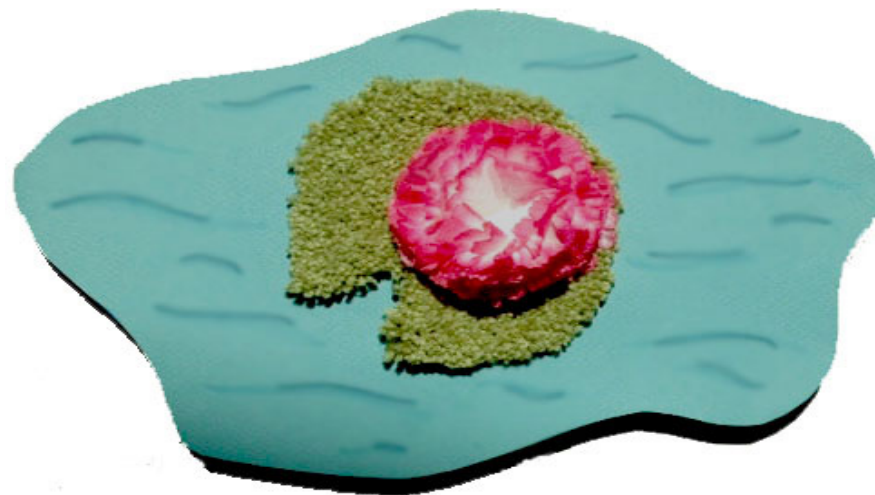
Sheet Title: Concept
Concept Deconstruction
Concept Statement
Concept Model
Reinterpretation
Inspiration Images

angela m. carlson

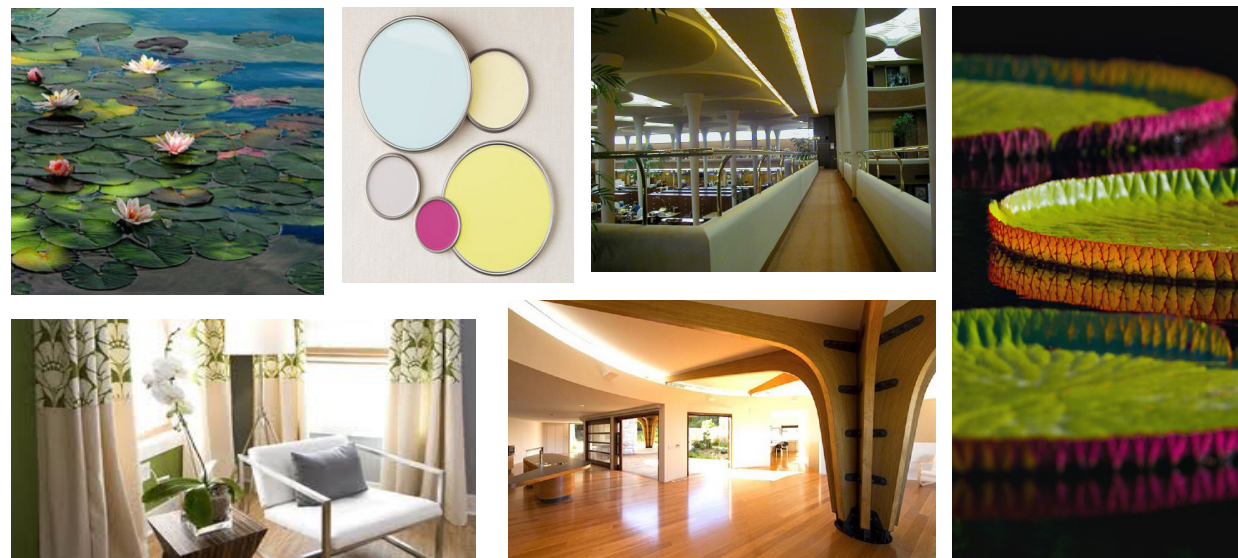
Concept Statement

The lily pad inspires a sense of tranquility and serenity which also promotes a sense of ease. Lily pads are beautiful plants which float effortlessly in ponds and emulate calm behavior. The pad itself is the foundation and strength which supports the delicate lily.

Concept Model



Inspiration Images



Concept Deconstruction

FREE, SERENE, UNIQUE

SHAPE
-CIRCULAR
-ROUND
-3D
-INTEREST



COLOR
-CALM
-TRANQUIL
-SUBDUED
-HELPS PROMOTE
EASE FOR THOSE
WITH AUTISM

LINE
-CURVED
-POINTS
-FREE
-VARIETY

PEACEFUL, INNOCENT,
SIMPLE, CAREFREE

TEXTURE
-SMOOTH
-SOFT/GENTLE
-CHILDREN ARE
TACTILE LEARNERS

Reinterpretation

Using the idea of the lily pad, I plan to design the interior layout of the daycare with the largest space and most activity in the middle of the building to represent the lily flower sitting in the middle of the pad. The main colors that will be used in the space are aviary blue like that of the water and shagreen like that of the lily pad. The curved lines of the lily pad will be present in the circular shaped reception desk. The variety of textures of the lily pad will be incorporated into the sensory room to help the learning stimulation of the children with autism. Also the organic free movement of the lily pad will be displayed in the strategic furniture placement.

Lily Pad Daycare Center

ADA Design
Sustainable Design
Universal Design
Design for Autism

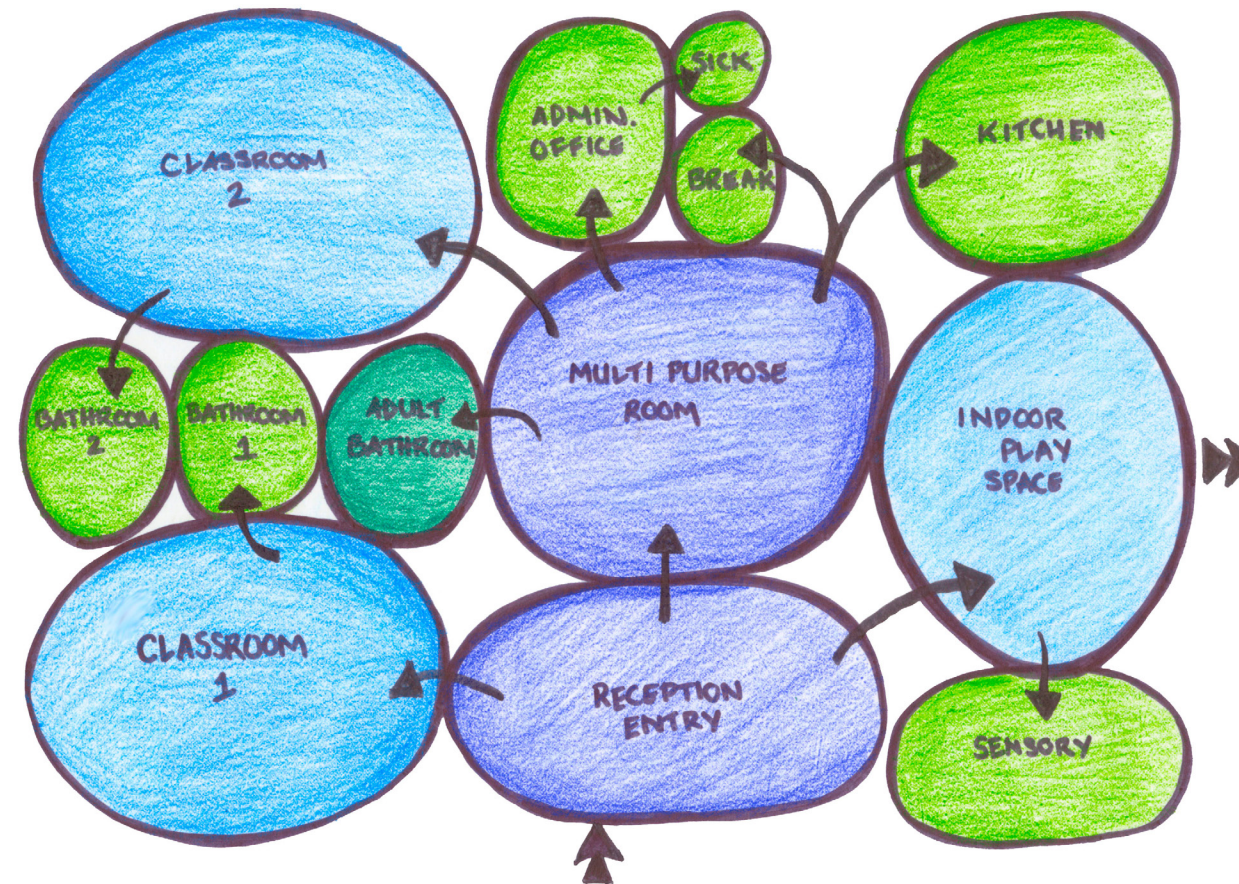
Project: Daycare Design for Children with Autism
Concept: Lily Pad

Designer: Angela Carlson
Professor: Bischoff
Class: ID102 Studio I
Date: May 15, 2014
Sheet 2 of 6

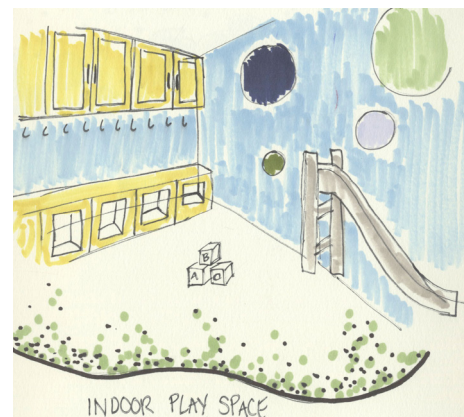
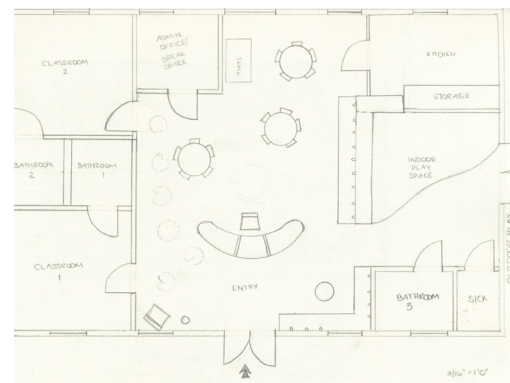
Sheet Title: Schematic Design
Final Bubble Diagram
Final Block Diagram
Process Work

Bubble Diagram

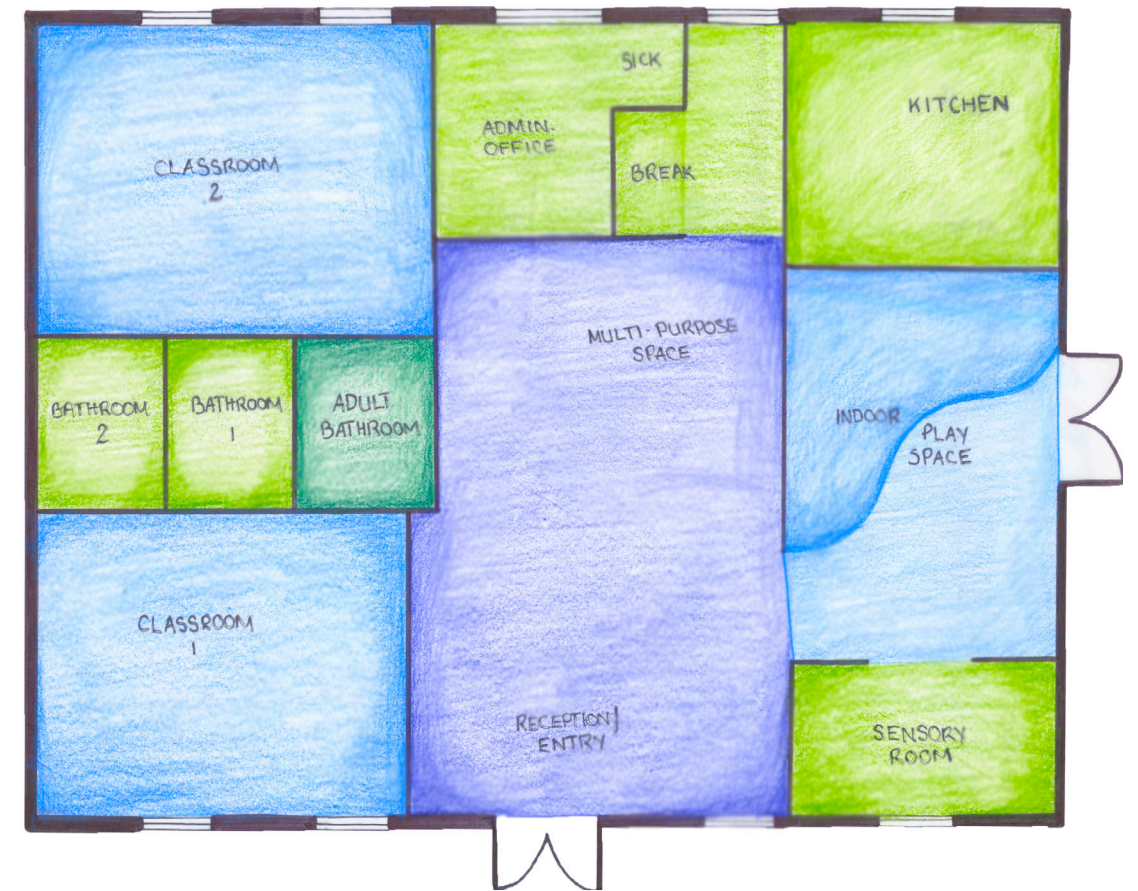
- Community Space
- Public Space
- Private Space
- Adult Space



Process Work



Block Diagram



Entry/ Reception

Admin. Offices

Sick Area

Indoor Play Space

Classroom 1

Classroom 2

Bathroom 1 (kids)

Bathroom 2 (kids)

Bathroom 3 (adults)

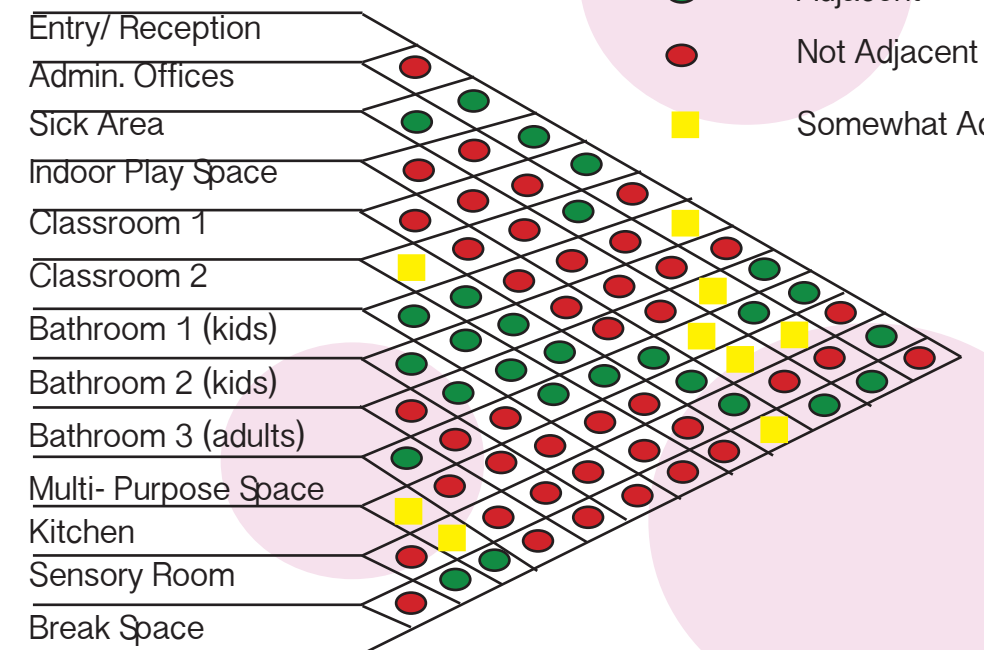
Multi- Purpose Space

Kitchen

Sensory Room

Break Space

- Adjacent
- Not Adjacent
- Somewhat Adjacent



Lily Pad



DAYCARE

Lily Pad Daycare Center

ADA Design
Sustainable Design
Universal Design
Design for Autism

Project: Daycare Design for Children with Autism
Concept: Lily Pad

Designer: Angela Carlson
Professor: Bischoff
Class: ID102 Studio I
Date: May 15, 2014
Sheet 3 of 6

Sheet Title:
Classroom Materials

angela m. carlson

Classroom Materials



48" Round Ash Table
Item Number: 70303-20

Ash Chairs
Item Number: 70293

Kaplan Early Learning Company



Commercial Electric 4 in. White Recessed Baffle Trim
Model # HBR201LWH Store
SKU # 264305

Mobile Adjustable Bookcase without Lip - Super-Sized
Item # 769



20" Hokki Stool
Item Number: 24498-BL
VS America Inc



35-210 RIVERSIDE
Wood Framed Chair - Biscuit Tufted Seat and Back - Single Welt Frame Trim



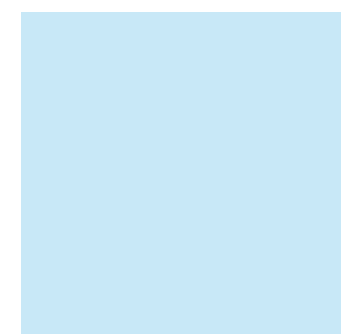
SW 6422 Shagreen Interior / Exterior

Color Collections CR 8, Crackle, Precious Baby, Fisher-Price® - Making Room for Baby Color Family Greens Color Strip 61 RGB ValueR-201 | G-205 | B-156 Hexadecimal Value #C9CD9C LRV58



SW 6778 Aviary Blue Interior / Exterior

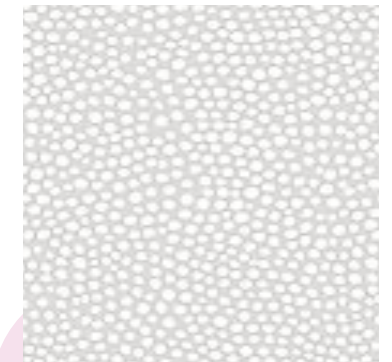
Color Family Blues Color Strip 112 RGB ValueR-201 | G-227 | B-234 Hexadecimal Value #C9E3EA LRV73



Home Decorators Collection Andover - Color Hay Stack 15 ft. Carpet Model # HDA1800LP6



Putty/White Pirput Parput Printed Cotton Marimekko Bemz Fabrics



Light Olive Green Belgian Linen Blend Bemz



Home Legend Brushed Strand Woven Cane 3/8 in. Thick x 3-7/8 in. wide x 36-1/4 in. Length So... Model # HL212

