



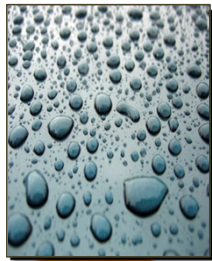
TABLE OF CONTENTS

- RESIDENTIAL DESIGN
- COMMERCIAL DESIGN
- HEALTHCARE DESIGN
- HOSPITALITY DESIGN
- MUSEUM DESIGN
- FURNITURE MAKING
- COLLABORATIVE WORKS

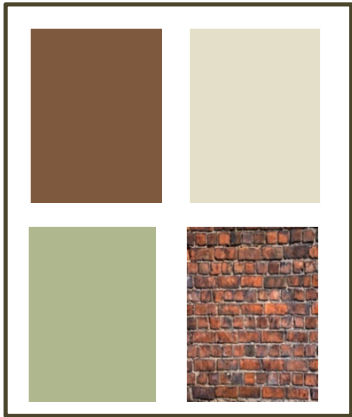
RESIDENTIAL DESIGN

EVIDENCE BASED DESIGN

- ◉ AGING IN PLACE
- ◉ RECYCLED MATERIALS
- ◉ ALLERGEN-FREE ENVIRONMENTS
- ◉ BARRIER-FREE
- ◉ ENERGY PERFORMANCE



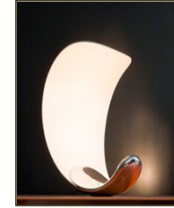
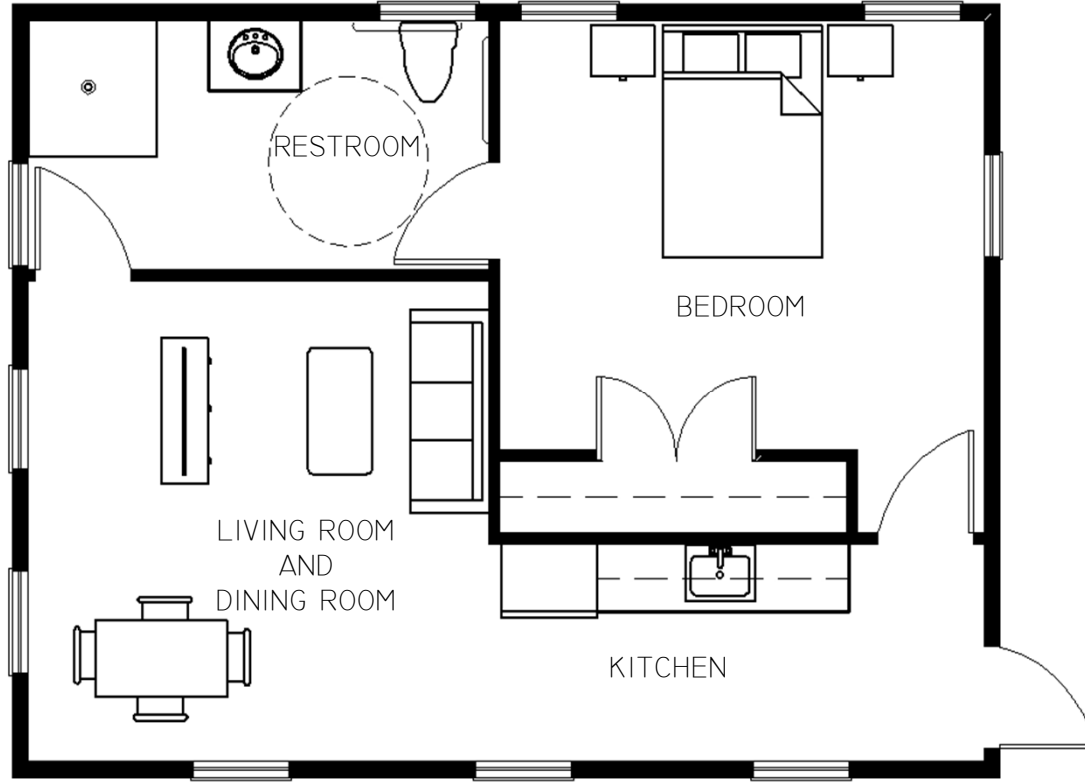
FINISHES



MATERIALS



FLOORING



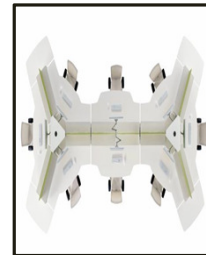
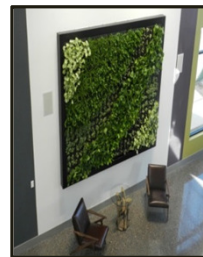
FURNITURE

OBJECTIVE: DESIGN A RUSTIC AND CONTEMPORARY BEACH HOUSE THAT INCORPORATES SUSTAINABLE DESIGN FEATURES. CLIENT WISHES TO AGE IN PLACE AND HAS AN ASTHMATIC SON.

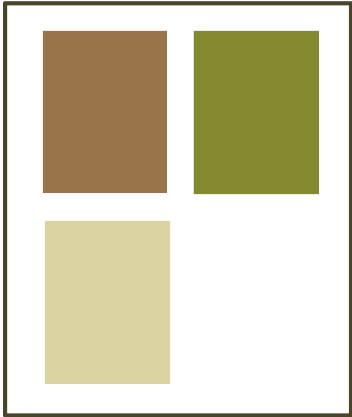
COMMERCIAL DESIGN

EVIDENCE-BASED DESIGN + LEED CI

- ◉ WORK STATIONS
- ◉ DAYLIGHTING
- ◉ ENERGY PERFORMANCE
- ◉ INDOOR AIR QUALITY
- ◉ ERGONOMICS



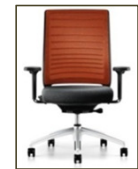
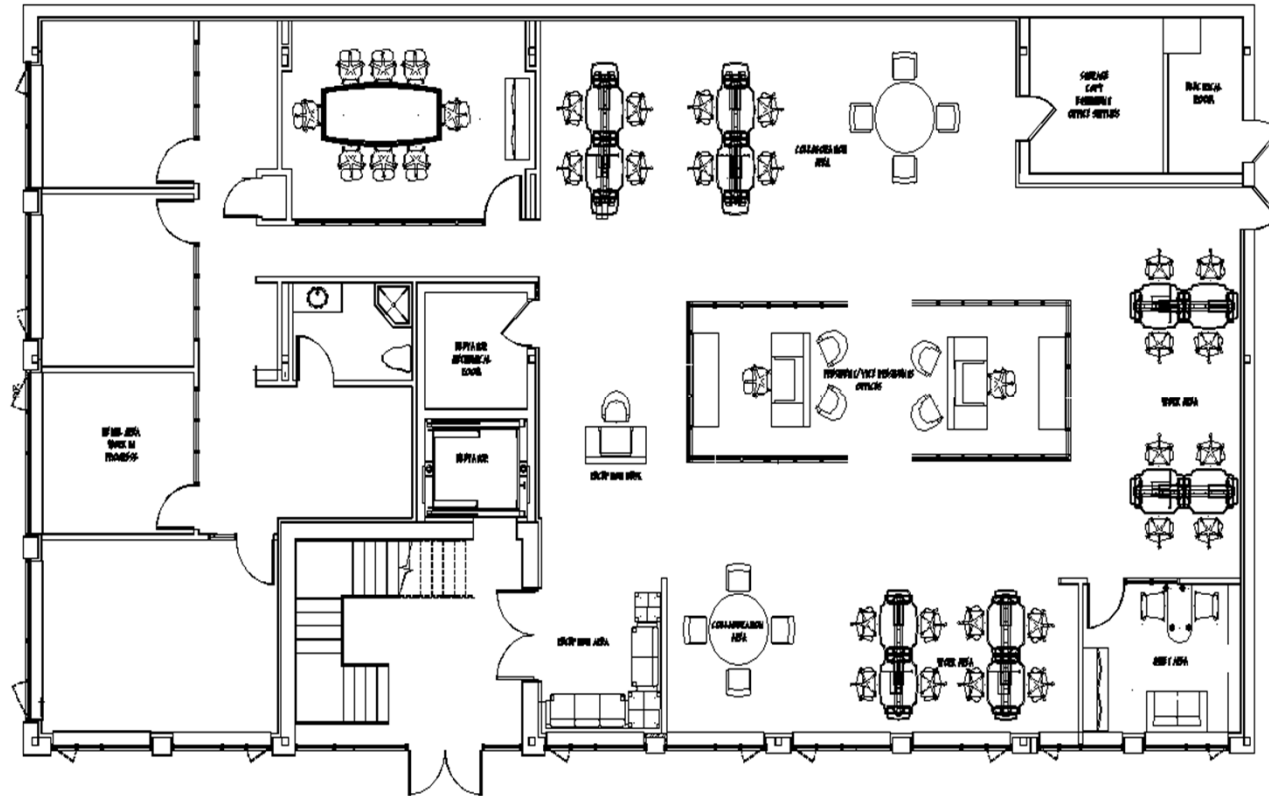
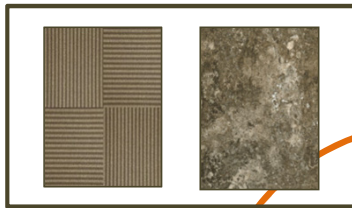
FINISHES



MATERIALS



FLOORING



FURNITURE

OBJECTIVE: DESIGN A CORPORATE OFFICE ENVIRONMENT SUPPORTED BY COLLABORATIVE SPACES, WORK STATIONS TO ENHANCE WORK PERFORMANCE, AND LEED AND SUSTAINABLE COMPONENTS.

HEALTHCARE DESIGN

CONSTRUCTION DOCUMENTS

- ◉ EXISTING CONSTRUCTION
- ◉ DOCTOR OFFICE SUITE
- ◉ AUTOCAD
- ◉ INTERIOR ELEVATIONS
- ◉ SCHEDULES

| DRAWING INDEX: |
|---------------------------|
| CS COVER SHEET |
| G1 GENERAL NOTES |
| G2 GENERAL NOTES |
| G3 GENERAL NOTES |
| A1 DEMOLITION PLAN |
| A2 ARCHITECTURAL PLAN |
| A3 ARCHITECTURAL PLAN |
| A4 FURNITURE PLAN |
| A5 FURNITURE PLAN |
| A6 REFLECTED CEILING PLAN |
| A7 REFLECTED CEILING PLAN |
| A8 POWER PLAN |
| A9 POWER PLAN |

| TYPE | SWING |
|------|---------|
| D1 | LH |
| D2 | BI-FOLD |
| D3 | LH |
| D3 | LH |
| D3 | LH |
| D4 | RH |
| D4 | LH |
| D1 | RH |
| D1 | RH |
| D3 | RH |
| D2 | BI-FOLD |
| D3 | RH |
| D3 | LH |

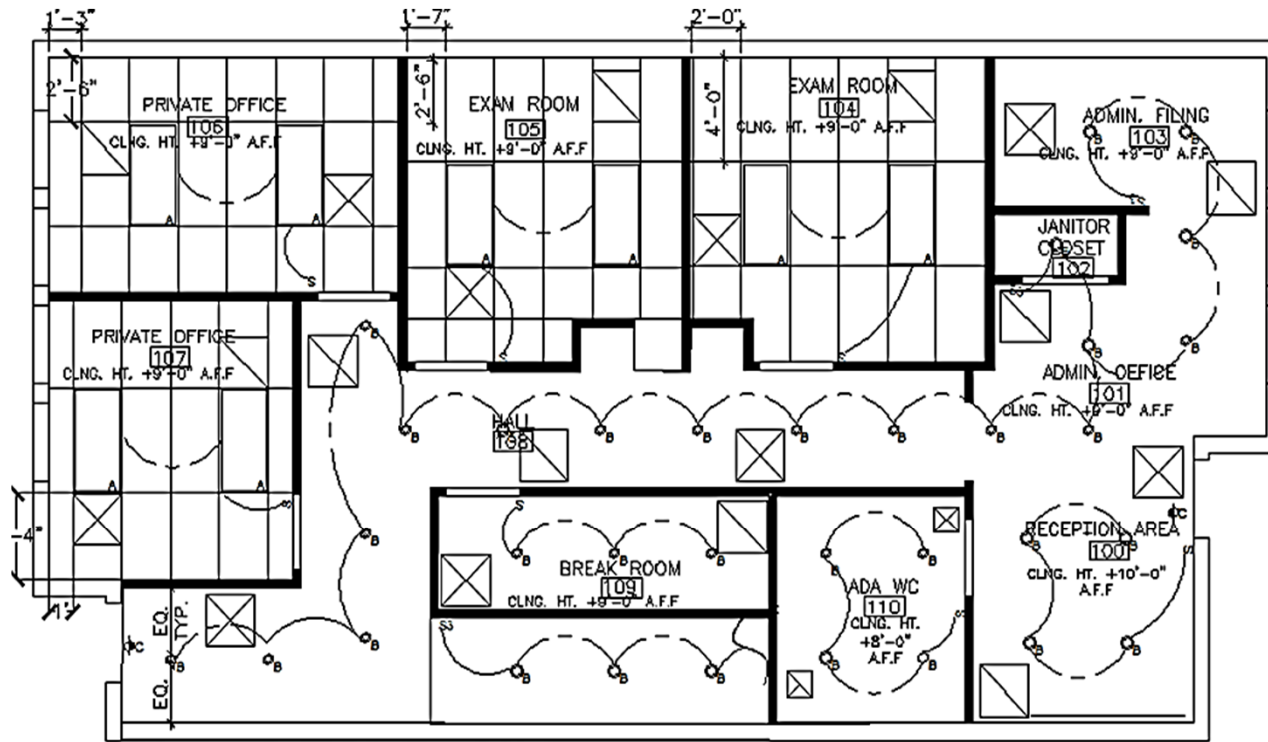
| POWER LEGEND: |
|---|
| ⬤ DUPLEX OUTLET |
| Ⓞ GROUND FAULT CIRCUIT INTERRUPTER |
| ☒ TELEPHONE JACK |
| Ⓞ CARBON MONOXIDE DETECTOR |
| Ⓞ SMOKE DETECTOR |
| Ⓞ THERMOSTAT |
| ☐ PANEL BOARD |
| Ⓞ FIRE EXTINGUISHER (15 L.F. TRAVEL DISTANCE MAX) |

SPECIFICATION BOOK

NINETEEN
86
DESIGN

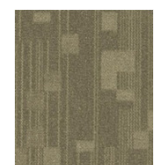
Proposed Specifications for:
LIVEWELL MEDICAL ASSOCIATES
1000 MORRIS AVENUE
UNION, NJ 07083

LIGHTING



① REFLECTED CEILING PLAN— FIRST FLOOR
1/4" = 1'-0"

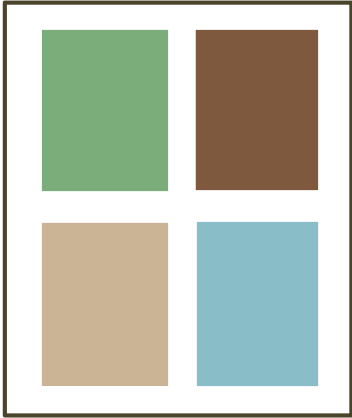
| LIGHTING LEGEND | | | | |
|-----------------|--|---------------------|--|-------------|
| A | | 2X4 FLUORESCENT | | 2X2 RETURN |
| B | | 4" RECESSED LIGHT | | 2X2 SUPPLY |
| C | | LUMINATED EXIT SIGN | | 2X2 EXHAUST |



MATERIALS & FINISHES

OBJECTIVE: RENOVATE AN EXISTING LAW OFFICE TO FIT THE NEEDS OF LIVELL MEDICAL GROUP, PROVIDING PRIVATE EXAM ROOMS FOR PATIENT CARE, AS WELL AS CUSTOM MILLWORK TO SUIT AND ARCHITECTURAL LIGHTING DESIGN SOLUTIONS.

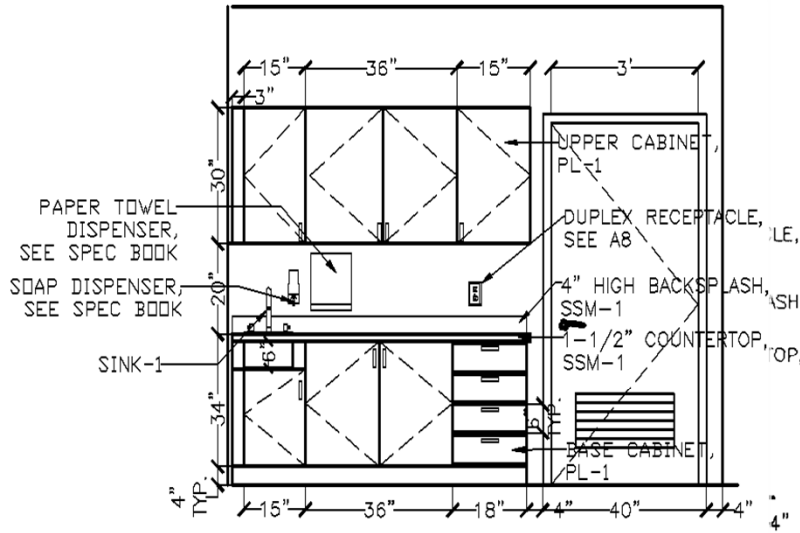
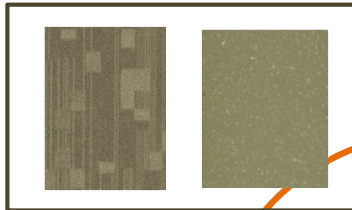
FINISHES



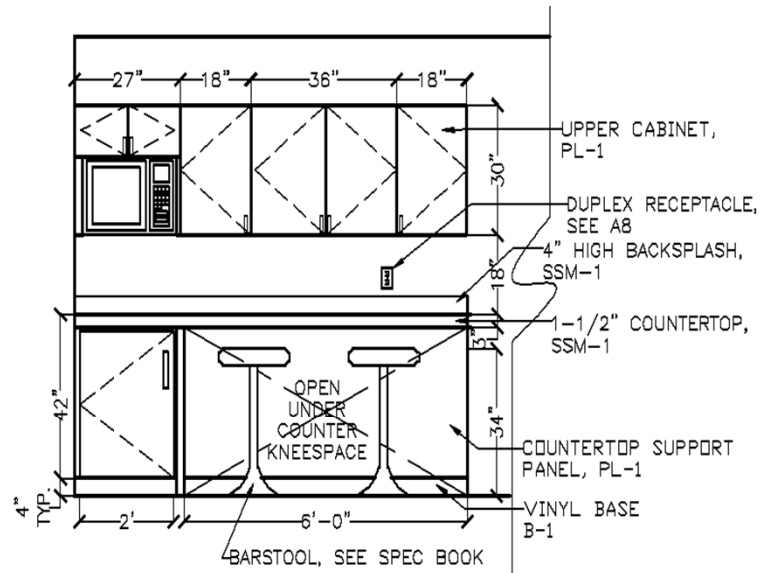
MATERIALS



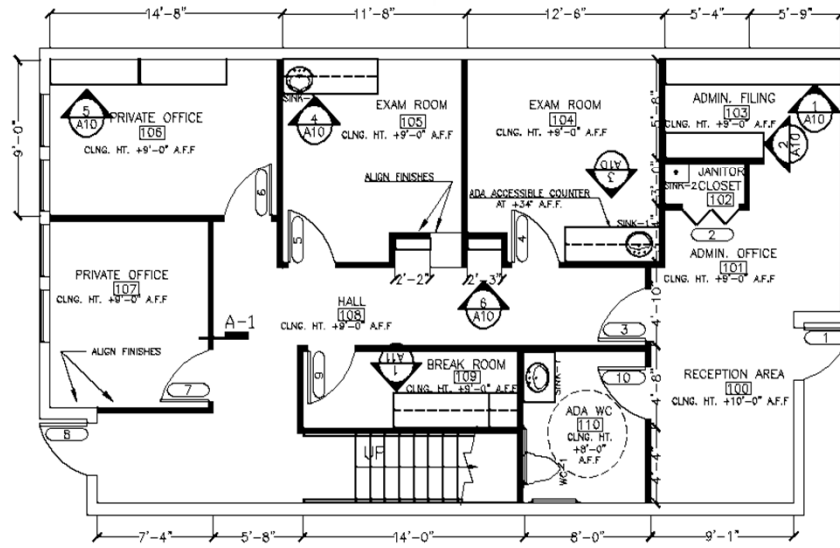
FLOORING



③ EXAM ROOM 104
3/8" = 1'-0"



① BREAK ROOM 109
3/8" = 1'-0"

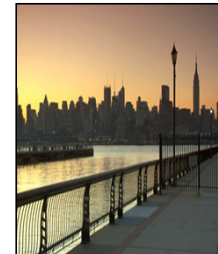
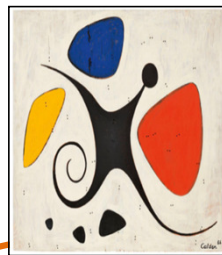


① ARCHITECTURAL PLAN - FIRST FLOOR
1/4" = 1'-0"

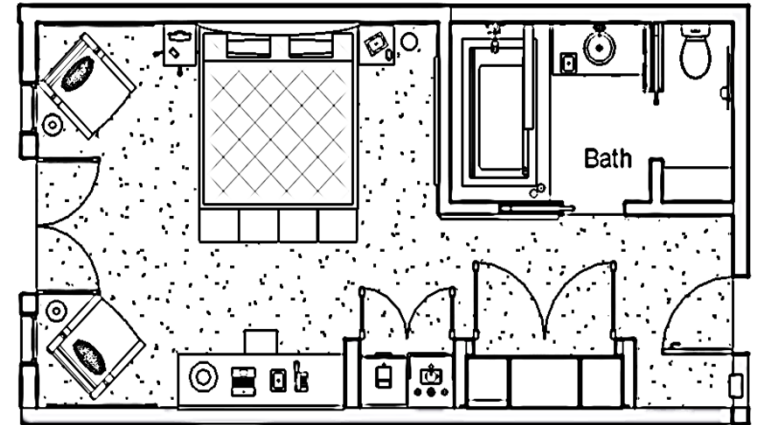
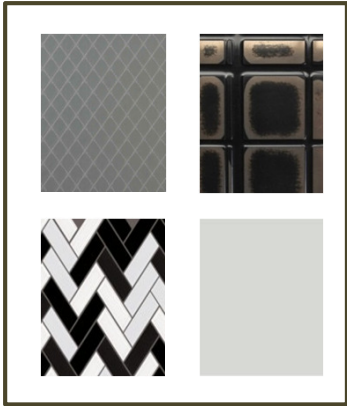
HOSPITALITY DESIGN

HOTEL DESIGN

- RESEARCH
- INSPIRATION
- LOCATION
- REVIT
- RENDERINGS



FINISHES



MATERIALS

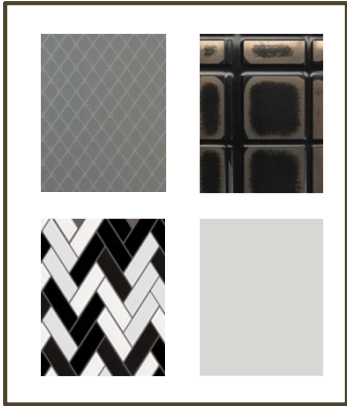


FLOORING



OBJECTIVE: CREATE A HOTEL INSPIRED BY THE WORKS OF ARTIST ALEXANDER CALDER, WITH A HIGH-END AESTHETIC ATMOSPHERE THAT PROVIDES LUXURY SERVICES TO THE HOTEL GUESTS AND THE PUBLIC.

FINISHES



MATERIALS



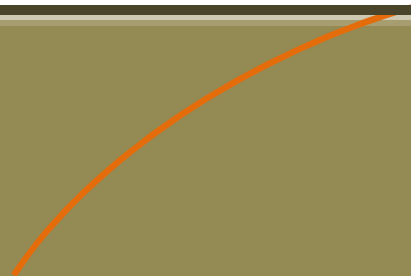
FLOORING



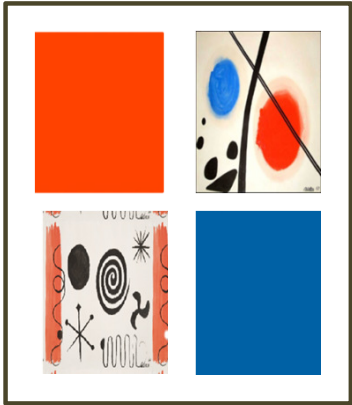
BEDROOM



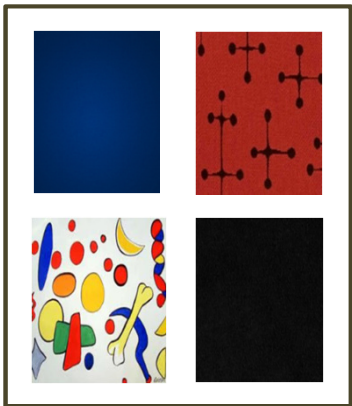
BATHROOM



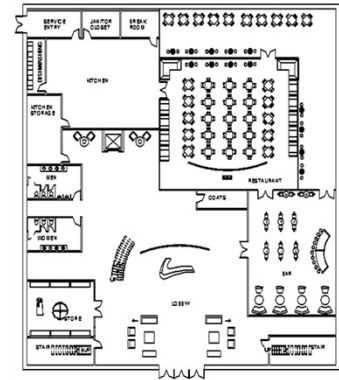
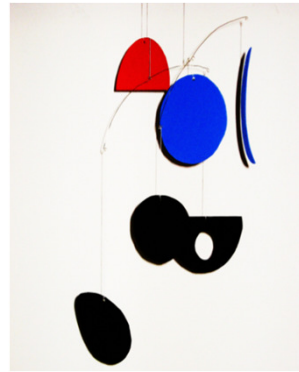
FINISHES



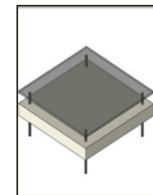
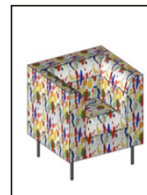
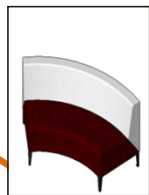
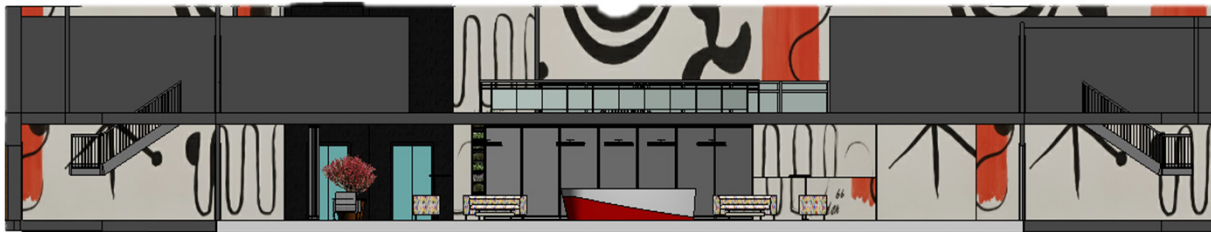
MATERIALS



FLOORING



LONGITUDINAL ELEVATIONS

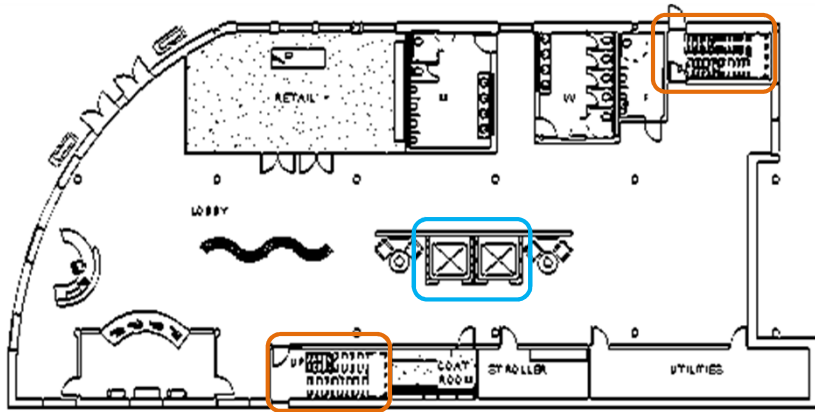


MUSEUM DESIGN

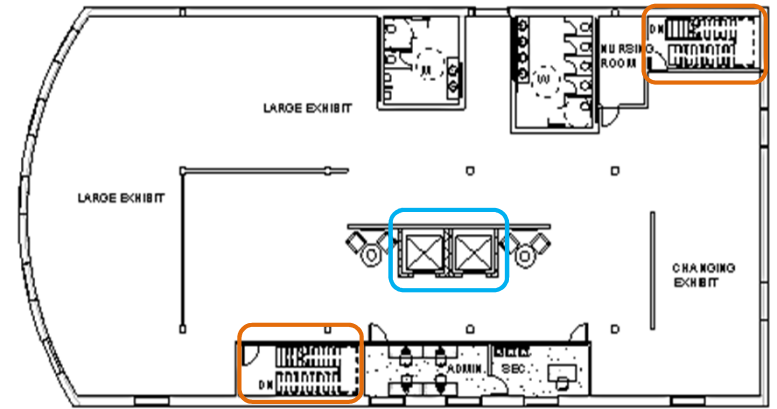
CHILDREN'S MUSEUM DESIGN

- ◉ DEMOGRAPHIC RESEARCH
- ◉ INSPIRATION + CREATIVITY
- ◉ ACTIVITIES + INTERACTIVE
- ◉ REVIT
- ◉ RENDERINGS

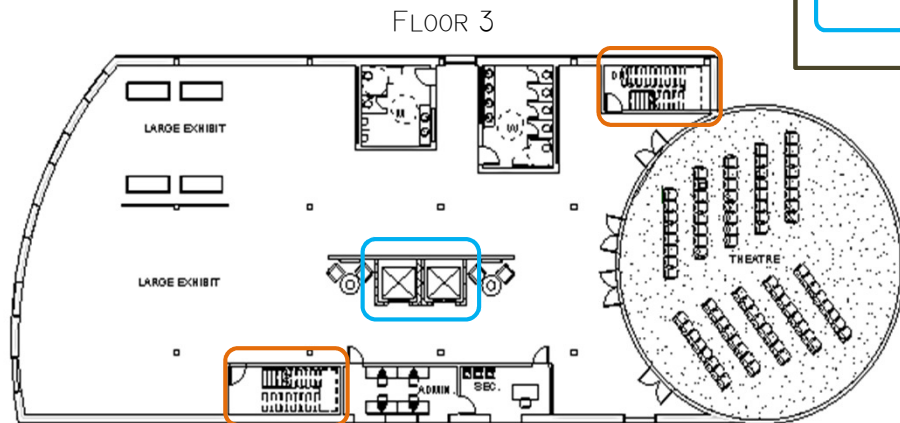
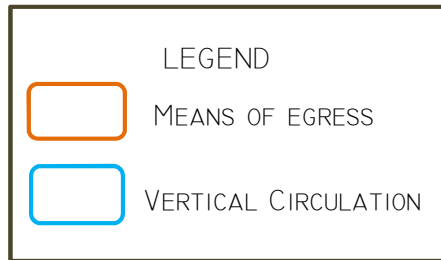




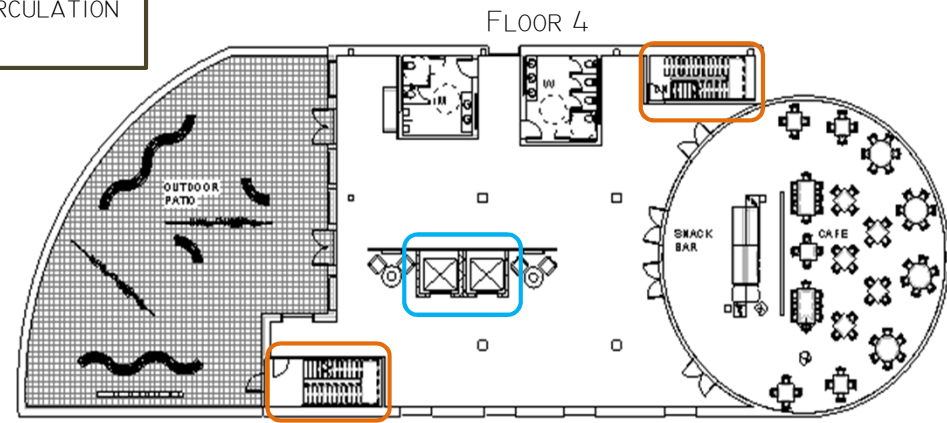
FLOOR 1



FLOOR 2



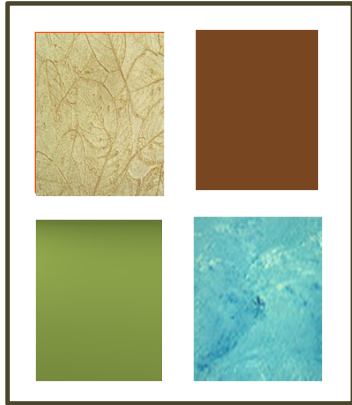
FLOOR 3



FLOOR 4

OBJECTIVE: CREATE A CHILDREN'S MUSEUM THAT HAS A CENTRAL THEME, ACTIVELY ENGAGE CHILDREN IN EDUCATIONAL AND ENTERTAINING EXPERIENCES THROUGH SPACIOUS EXHIBITS, WHILE EXECUTING MEANS OF EGRESS, VERTICAL CIRCULATION AND LIFE SAFETY CODES OF THE PUBLIC.

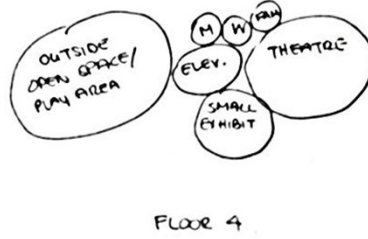
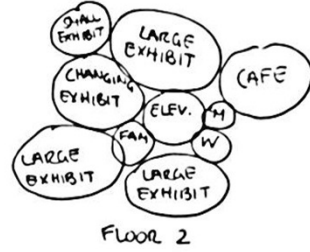
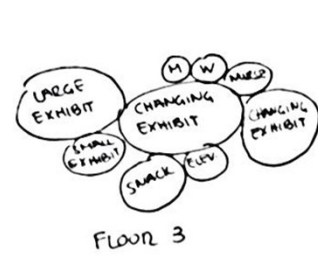
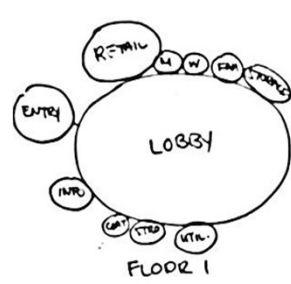
FINISHES



MATERIALS



FLOORING



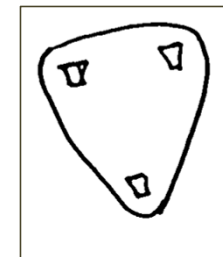
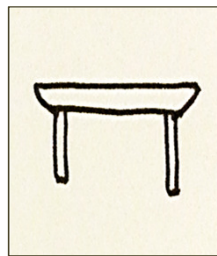
LONGITUDINAL & VERTICAL ELEVATIONS



FURNITURE MAKING

WOODWORKING

- INSPIRATION
- SKETCHES
- MORTISE + TENON JOINTS
- REVERSED BEVELED EDGE
- BLACK WALNUT



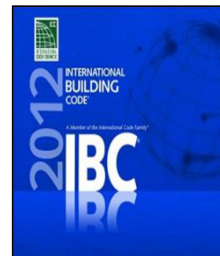
CONSTRUCTION PROCESS



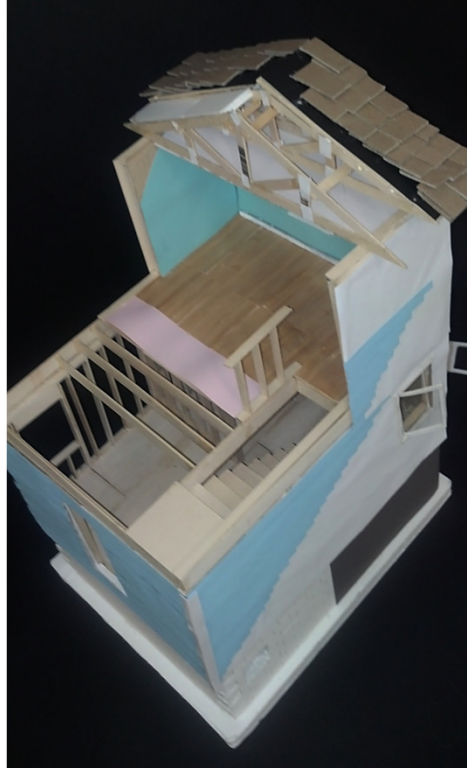
COLLABORATIVE WORKS

COLLABORATION + METHODOLOGY

- THINKING CREATIVELY CHARRETTE
- INSPIRATION
- COLLABORATION
- CONSTRUCTION METHODS
- EXECUTING BUILDING CODES



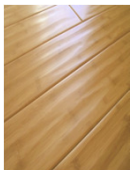
BUILDING CONSTRUCTION & METHODS



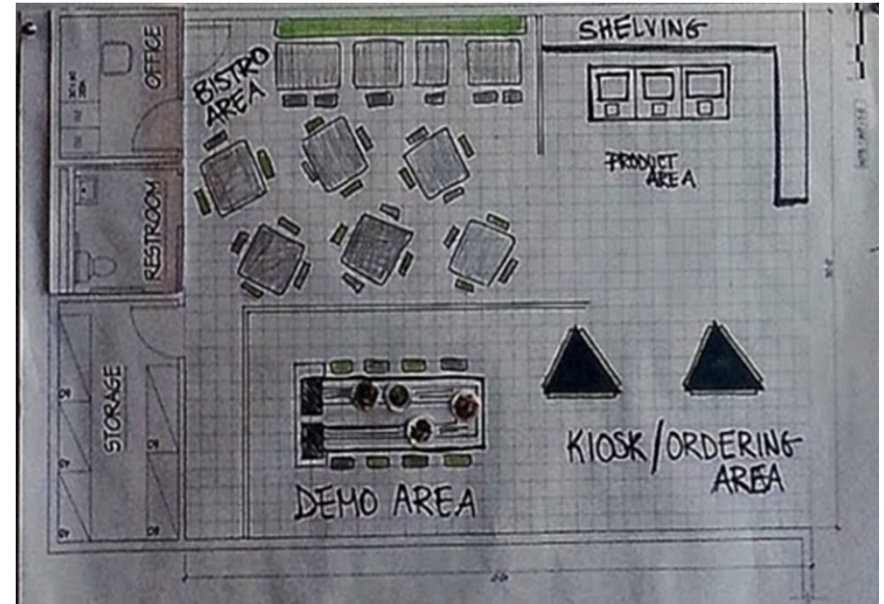
OBJECTIVE: CREATE A SCALE MODEL OF A PLATFORM FRAME NEW 2 STORY RESIDENCE ABIDING TO THE INTERNATIONAL BUILDING CODES OF NJ, AS WELL AS INCORPORATING LIFE SAFETY CODES AND FOLLOWING CONSTRUCTION METHODS ACCURATELY.

BISTR BOT

MATERIALS & FINISHES



Gourmet your way!



OBJECTIVE: CREATE A BRAND, LOGO, LOCATION STORE AND BISTRO FOR THE BISTR BOT, A PRODUCT THAT SERVES 3D PRINTED FOOD FOR ITS CONSUMERS.