

Evan



# The skinny on Evan

## Scalability

- Twelve sizes and three frame styles along with multiple accessories pave the way for creating everything from a study carrel to a hundred person call center
- Choice of materials allows for scalability in aesthetic and price
- Screens can be fixed, mobile, or ganged to create space delineation
- Mobile marker boards let you wheel your ideas from one room to another

## Imbedded Functionality

- Organization rail and accessories capture vertical space above the worksurface.

## Modernist Principles of Simple

### Intuitive Design

- Designed by David Wright
- Extruded aluminum frame in Silver
- Multiple material options allow design flexibility

### Human Centered

- Light in scale, easy to move (who doesn't love that?)
- Simple, two-point connection for quick assembly (plus easy moves, additions and changes)
- Meets or exceeds ANSI/BIFMA standards
- Named after an extraordinarily cute little boy

## Cool and Affordable

- Cool design with an affordable price tag (compliments of izzy+'s lean manufacturing process)

## Environmental

- Minimal use of materials
- Easy to disassemble for recycling
- SCS Indoor Advantage™ Gold certified

## izzyeasy

- Colors and materials designed to coordinate with other izzy+ collections
- 5-year limited warranty



Frosted acrylic, Silver frame, Perforated steel lower core



**ONE-CORE SCREEN**

Dimensions (width x height)

27 x 42      39 x 42  
 27 x 54      39 x 54  
 27 x 62      39 x 62

36 x 42      48 x 42  
 36 x 54      48 x 54  
 36 x 62      48 x 62



**TWO-CORE SCREEN**

Dimensions (width x height)

27 x 42      48 x 42  
 27 x 54      48 x 54  
 27 x 62      48 x 62

36 x 42      60 x 42  
 36 x 54      60 x 54  
 36 x 62      60 x 62

39 x 42      72 x 42  
 39 x 54      72 x 54  
 39 x 62      72 x 62



**TWO-CORE TRANSITION SCREEN**

Dimensions (width x height)

27 x 62/42      39 x 62/42  
 27 x 62/54      39 x 62/54

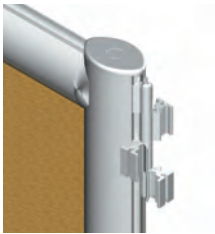
36 x 62/42      48 x 62/42  
 36 x 62/54      48 x 62/54



**MOBILE MARKER BOARD SCREEN**

Dimensions (width x height)

36 x 54      48 x 54  
 36 x 62      48 x 62  
 36 x 72      48 x 72



**UNIVERSAL HINGE KIT**

Universal hinge provides 2-, 3-, and 4-way connections



**WALL MOUNT HINGE KIT**

Mounts to the wall and connects with screen hinge to produce a wall mounted screen. Works with 42", 54" and 62" high screens



**CASTERS (SET OF 2)**  
14W x 3.25D x 4.75H

Specify casters for any one-core, two-core, or two-core transition frame.



**STABILIZING CLIP**  
2W x 3.25D x 4.75H

Use these clips to add stability when attaching your screen to your desk.



**STRAIGHT TRANSACTION TOP**  
10W x 18L

- Can be added to one-core or two-core screens
- Attach to 42" high screen to create receptionist area



**ROUND TRANSACTION TOP**  
10.5 diameter

- Can be added to one-core or two-core screens
- When using at the end of a run, specify a support foot also
- Attach to 42" high screen to create a high-functioning reception area



**120° TRANSACTION TOP**  
12W x 10D x 12L

- Can be added between any two frames of the same height
- Attach to 42" high screen to create receptionist area



**90° TRANSACTION TOP**  
12W x 10D x 12L

- Can be added between any two frames of the same height
- Attach to 42" high screen to create receptionist area



**SUPPORT FOOT**  
14W x 3.25D x 3H

- For proper stability, a Support Foot should be used every third screen when assembling screens in a line



**ACCESSORY RAIL**  
Dimensions (width x height)

27W x 8H	48W x 8H
36W x 8H	60W x 8H
39W x 8H	72W x 8H



**BINDER SHELF**

24W x 11.5D x 8H
30W x 11.5D x 8H
36W x 11.5D x 8H



**SHELF DIVIDER**

11D x 6.7H



**LETTER TRAY**

11.75W x 9D



**PEN HOLDER**

3W x 5H



**CD RACK**

3W x 8H



**MARKER BOARD TRAY**

14.75W x 5D x 2H

# Color and Materials

## LAMINATES CORE SOLIDS



Dover White



Pearl



Folkstone



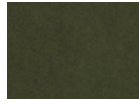
Platinum



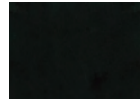
Earth



Citadel



Graphite



Black

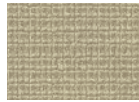
## CLASSIC PATTERNS



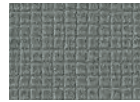
Sheer Mesh



Grey Mesh



Gilded Mesh



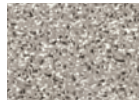
Steel Mesh



Pewter Mesh



White Nebula



Grey Nebula



Graphite Nebula

## CLASSIC WOOD GRAINS



Fusion Maple



Monticello Maple



Huntington Maple



Wild Cherry



Versailles Anigre



Montana Walnut



Empire Mahogany



Hemlock

## EVOLVING WOOD GRAINS



Dunewood



Millennium Oak



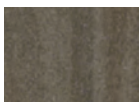
Oiled Walnut



Zebrano

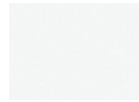


Chestnut Woodline



Smoky Brown Pear

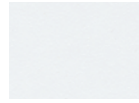
## RESIN



Frosted Acrylic

## RESIN AND GLASS

3FORM® VARIA ECORESIN



Ghost



Camel



Moss



Sea



Surf



Violet



Sassy



Cranberry



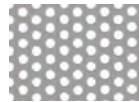
Marmalade

## FRAME



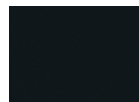
Silver

## PERFORATED STEEL

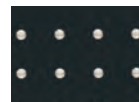


Silver

## MDF



Black



Black Pegboard

TACKABLE VERTICAL TEXTILE  
HEATHER – GRADE 1



Cloud



Air

SISAL – GRADE 1



Willow



Meadow



Straw



Heron

UNIVERSE – GRADE 2



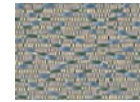
Mica



Creme Brulee



Whitecap



Cosmic



Milkway



Seneca

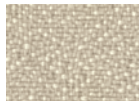


Depth

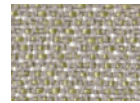
BACKDROP – GRADE 3



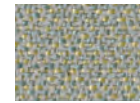
Bone



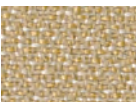
Mica



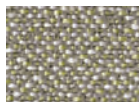
Cement



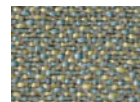
Rain



Jute

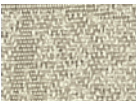


Charcoal



Bonsai

ENCORE – GRADE 3

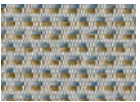


Putty



Graphite

FINE POINT – GRADE 3



Decimal



Peak



Compass



Nib



Focal



Vertex

REFLECTION – GRADE 3



Antiqued



Gold



Water



Titanium



Copper

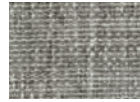


Bronze



Amethyst

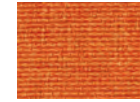
SOLILOQUY – GRADE 4



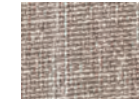
Shadow



Caramel



Citrus



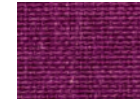
Mist



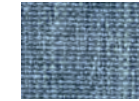
Wildfire



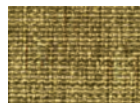
Coffee



Dahlia



Cornflower



Meadow



Oatmeal



Earth



Chimney