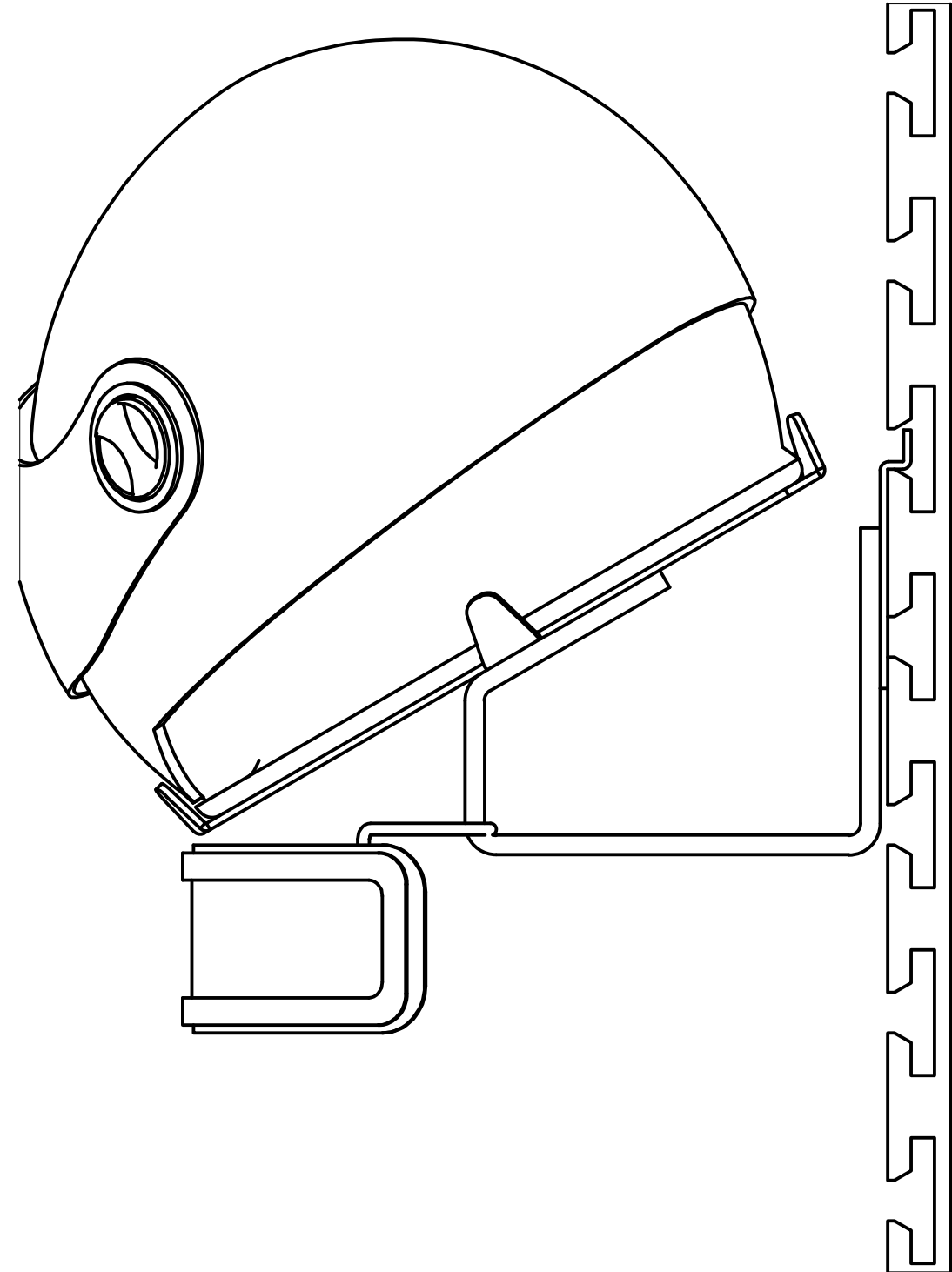
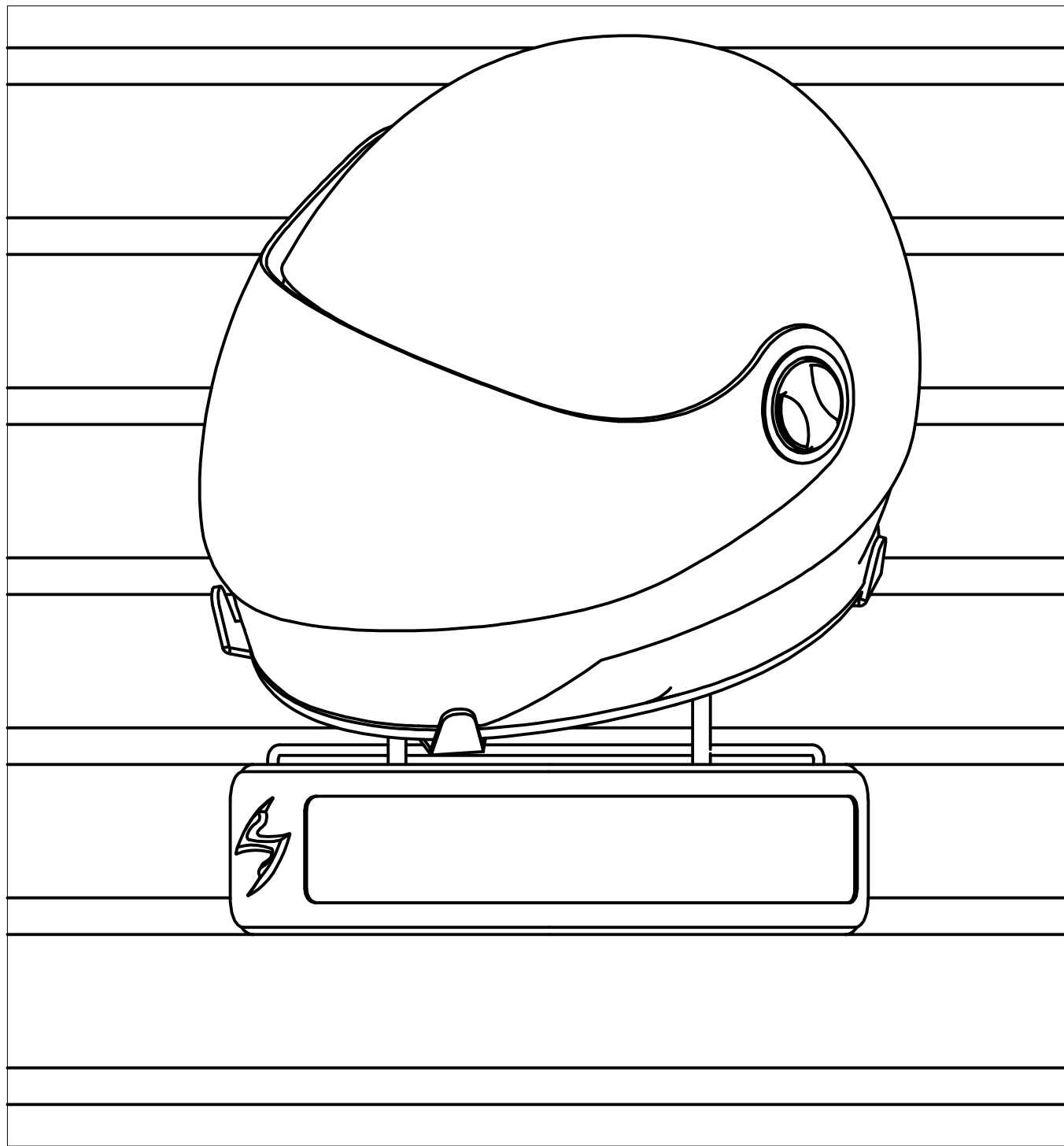




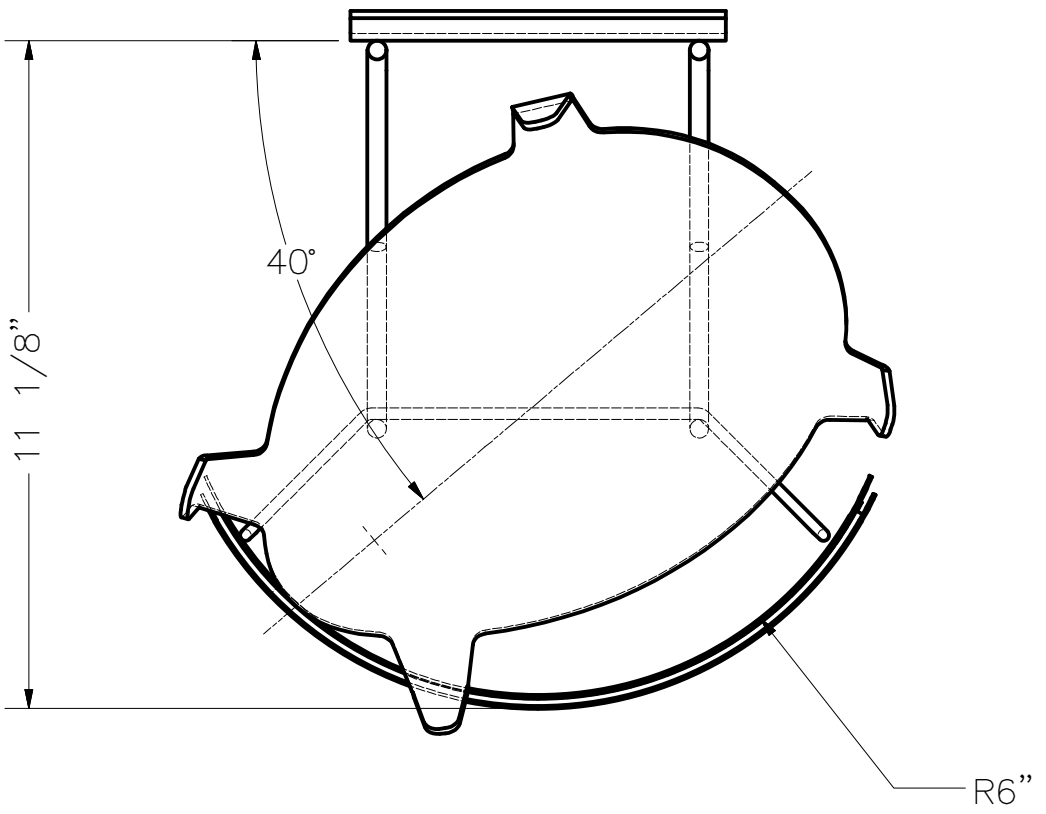
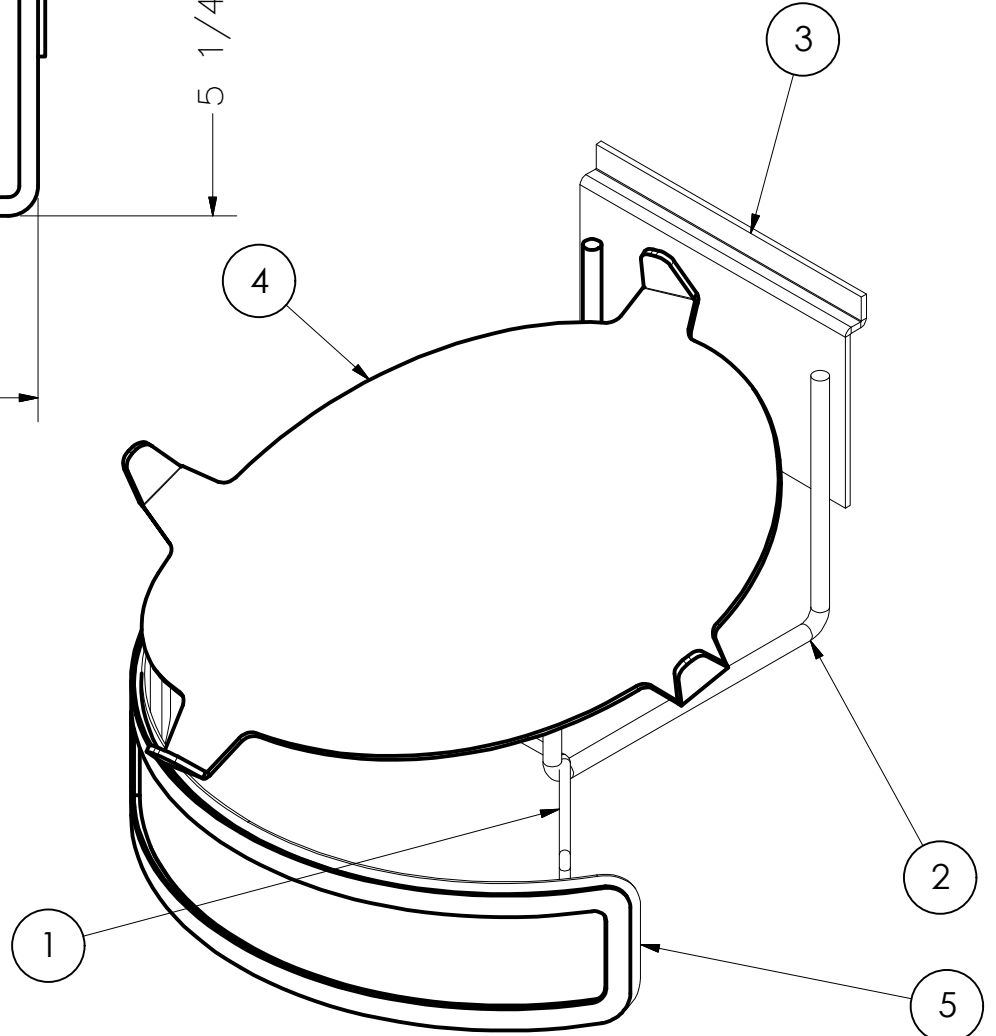
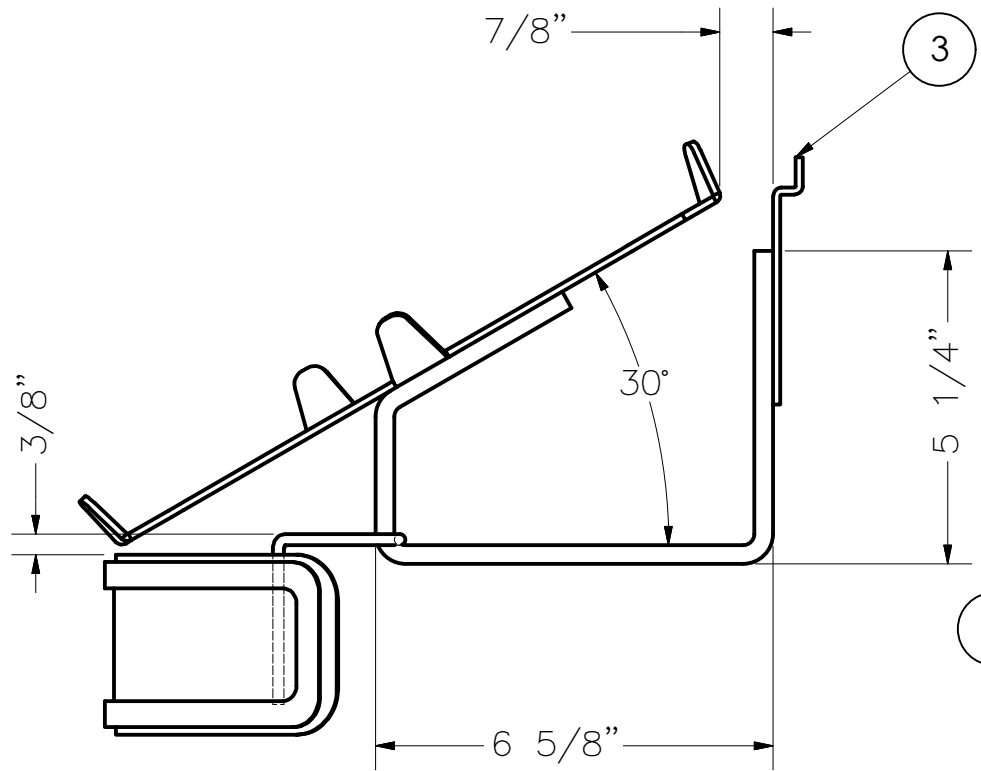
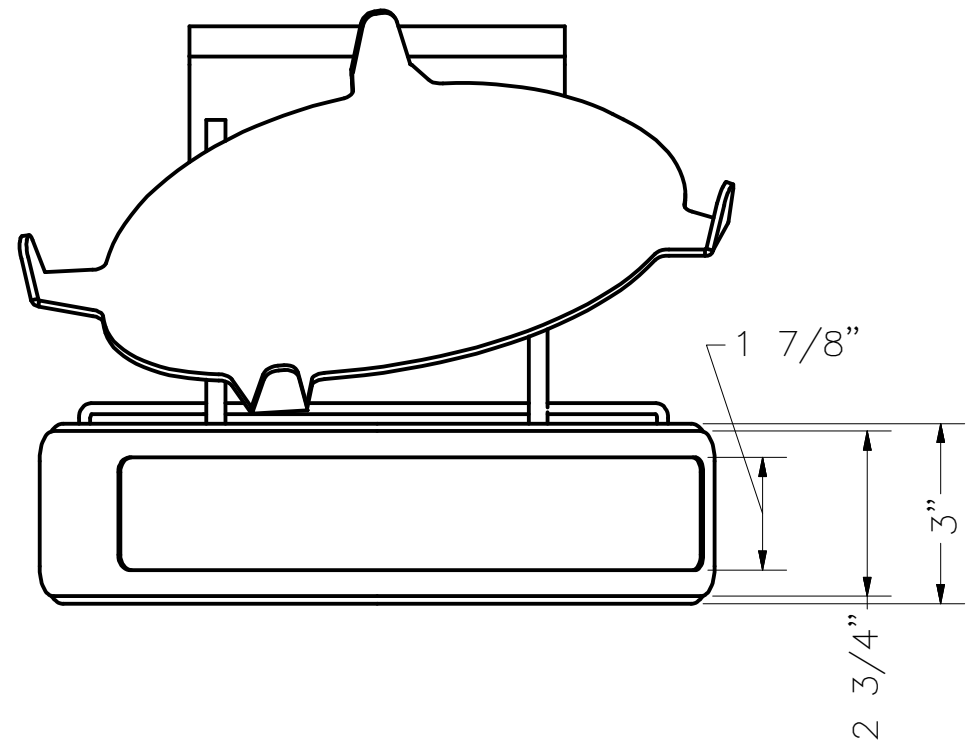
UNLESS OTHERWISE SPECIFIED, DIMENSIONS ARE INCHES. TOLERANCES ARE:			CUSTOMER SCORPION USA		 STORE EQUIPMENT CO. Pico Rivera, CA. (562) 949-2535	
FRACTIONS: +/- 1/32	DECIMALS: .xx +/- .01 .xxx +/- .005	ANGLES: +/- 1/2	APPROVALS	DATE		
FINISH			DRAWN	5/23/2013	SCORPION HELMET EX500 SLATWALL DISPLAY	
			CHK'D.		SIZE B	
			APVD.		DWG. No. SCRPN-HW-500-REVA	
			EQCB No.		REV.	
DO NOT SCALE DRAWING					SCALE: N.T.S.	
					SHEET: 1 OF 8	



UNLESS OTHERWISE SPECIFIED, DIMENSIONS ARE INCHES. TOLERANCES ARE:			CUSTOMER SCORPION USA	
FRACTIONS: +/- 1/32	DECIMALS: .xx +/- .01 .xxx +/- .005	ANGLES: +/- 1/2	APPROVALS	DATE
FINISH			DRAWN JEL	5/23/2013
			CHK'D.	
			APVD.	
			EQCB No.	
DO NOT SCALE DRAWING				

 STORE EQUIPMENT CO. Pico Rivera, CA. (562) 949-2535		
TITLE SCORPION HELMET EX500 SLATWALL DISPLAY		
SIZE B	DWG. No. SCRPN-HW-500-REVA	REV.
SCALE: N.T.S.	SHEET: 2 OF 8	

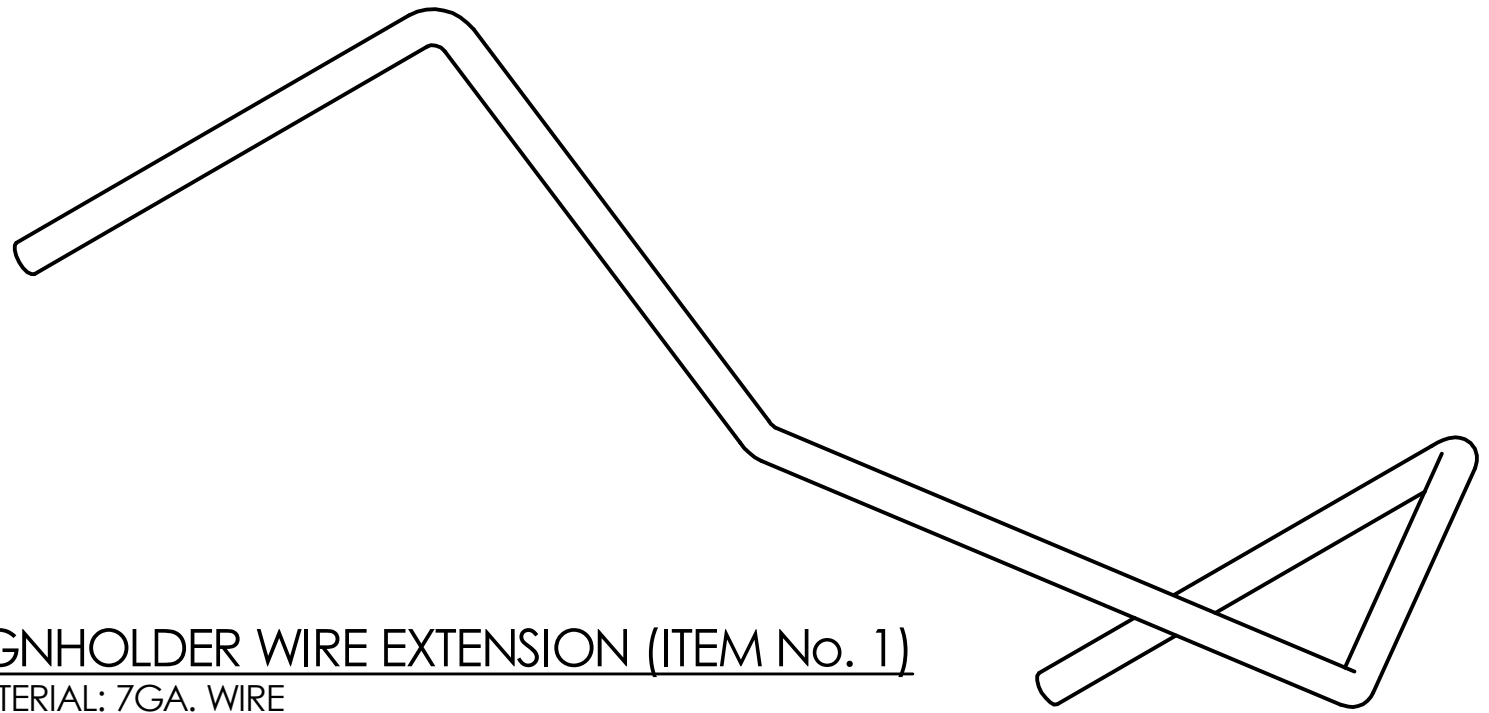
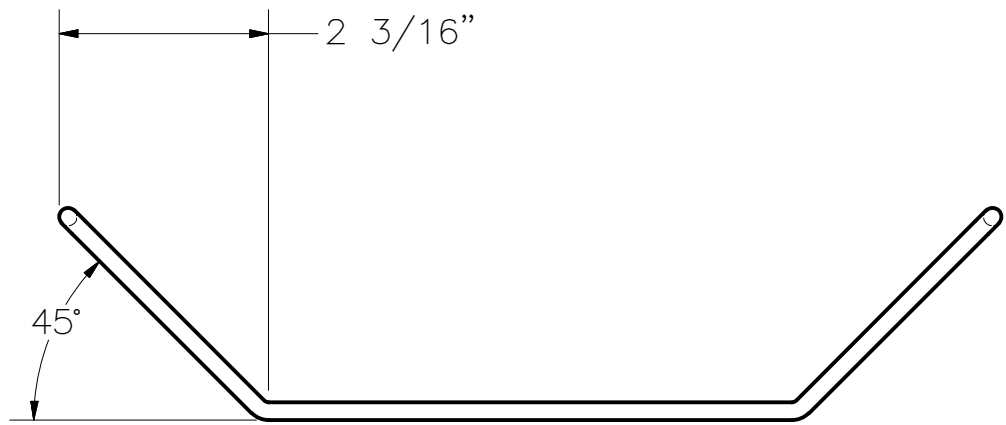
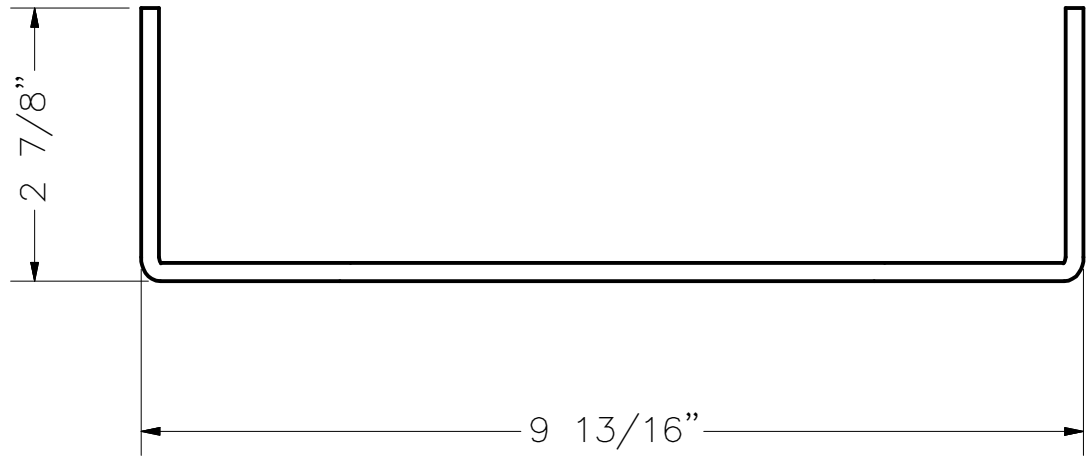
THIS DRAWING IS THE EXCLUSIVE PROPERTY OF REEVE STORE EQUIPMENT CO. WHO HOLDS AND MAINTAINS FULL COPYRIGHT PROTECTION UNDER FEDERAL AND STATE LAW. THIS DRAWING CANNOT BE DUPLICATED, PHOTOCOPIED, DIGITALLY TRANSFERRED, OR REPRODUCED WITHOUT THE EXPRESS WRITTEN CONSENT OF REEVE STORE EQUIPMENT CO. COPYRIGHT 2012, 2011, 2010, 2009, 2008, 2007, 2006, 2005, 2004, 2003, 2002. ALL RIGHTS RESERVED.



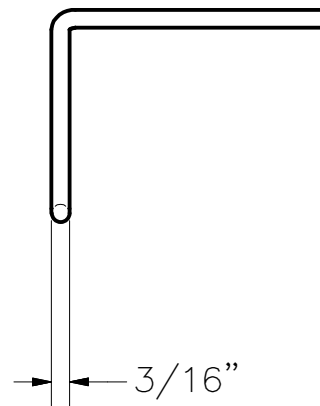
UNLESS OTHERWISE SPECIFIED, DIMENSIONS ARE INCHES. TOLERANCES ARE:			CUSTOMER SCORPION USA	
FRACTIONS: +/- 1/32	DECIMALS: .xx +/- .01 .xxx +/- .005	ANGLES: +/- 1/2	APPROVALS	DATE
FINISH			DRAWN JEL	5/23/2013
			CHK'D.	
			APVD.	
			EQCB No.	
DO NOT SCALE DRAWING				

 Pico Rivera, CA. (562) 949-2535		
SCORPION HELMET EX500 SLATWALL DISPLAY		
SIZE B	DWG. No. SCRPN-HW-500-REVA	REV.
SCALE: N.T.S.	SHEET: 3 OF 8	

THIS DRAWING IS THE EXCLUSIVE PROPERTY OF REEVE STORE EQUIPMENT CO. WHO HOLDS AND MAINTAINS FULL COPYRIGHT PROTECTION UNDER FEDERAL AND STATE LAW. THIS DRAWING CANNOT BE DUPLICATED, PHOTOCOPIED, DIGITALLY TRANSFERRED, OR REPRODUCED WITHOUT THE EXPRESS WRITTEN CONSENT OF REEVE STORE EQUIPMENT CO. COPYRIGHT 2012, 2011, 2010, 2009, 2008, 2007, 2006, 2005, 2004, 2003, 2002. ALL RIGHTS RESERVED.



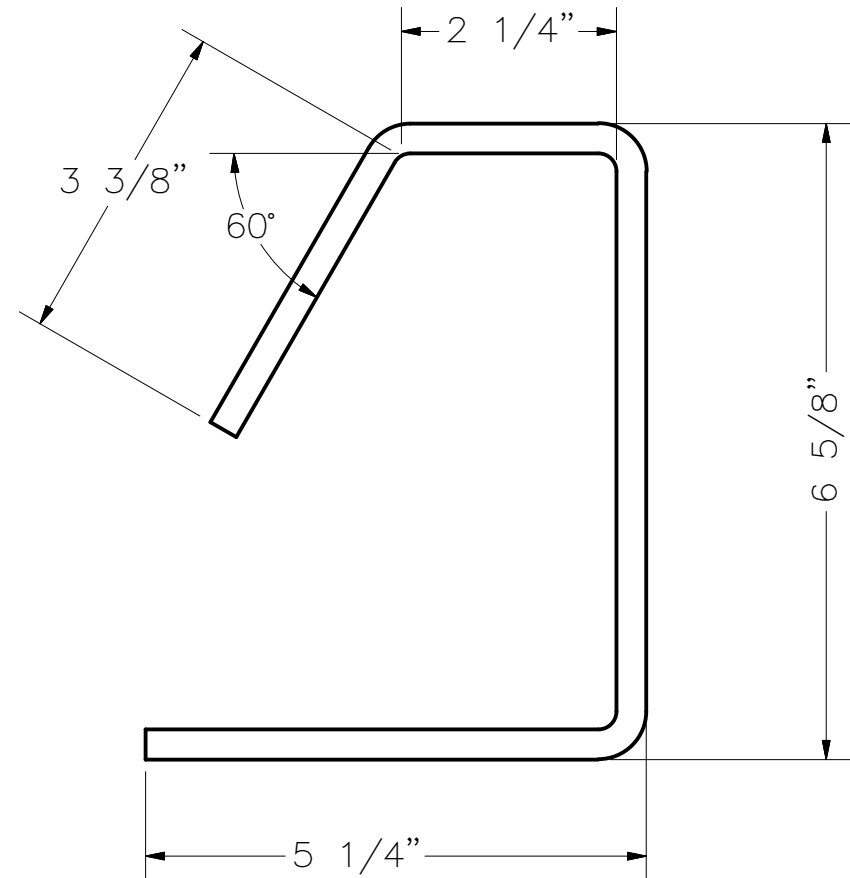
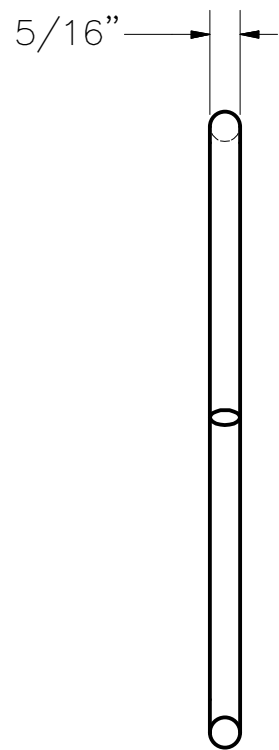
SIGNHOLDER WIRE EXTENSION (ITEM No. 1)
 MATERIAL: 7GA. WIRE



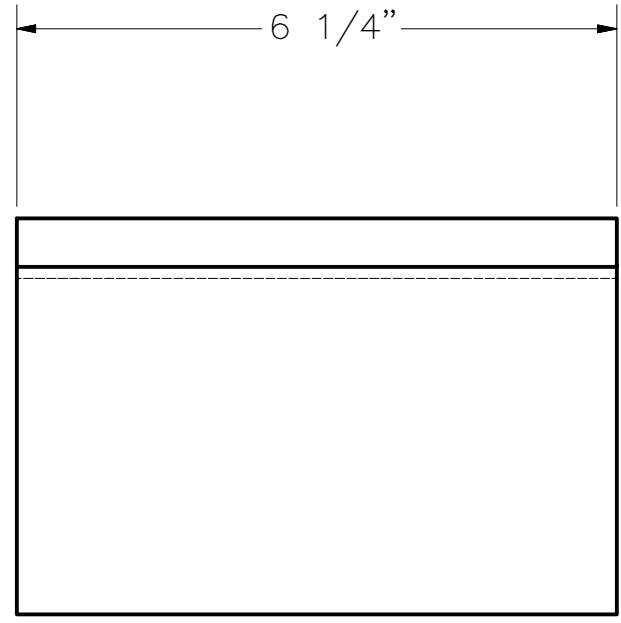
UNLESS OTHERWISE SPECIFIED, DIMENSIONS ARE INCHES. TOLERANCES ARE:			CUSTOMER SCORPION USA	
FRACTIONS: +/- 1/32	DECIMALS: .xx +/- .01 .xxx +/- .005	ANGLES: +/- 1/2	APPROVALS	DATE
FINISH			DRAWN JEL	5/23/2013
DO NOT SCALE DRAWING			CHK'D.	
			APVD.	
			EQCB No.	

 STORE EQUIPMENT CO. Pico Rivera, CA. (562) 949-2535			TITLE	SCORPION HELMET EX500 SLATWALL DISPLAY	
			SIZE B	DWG. No. SCRPN-HW-500-REVA	REV.
SCALE:	N.T.S.		SHEET:	4 OF 8	

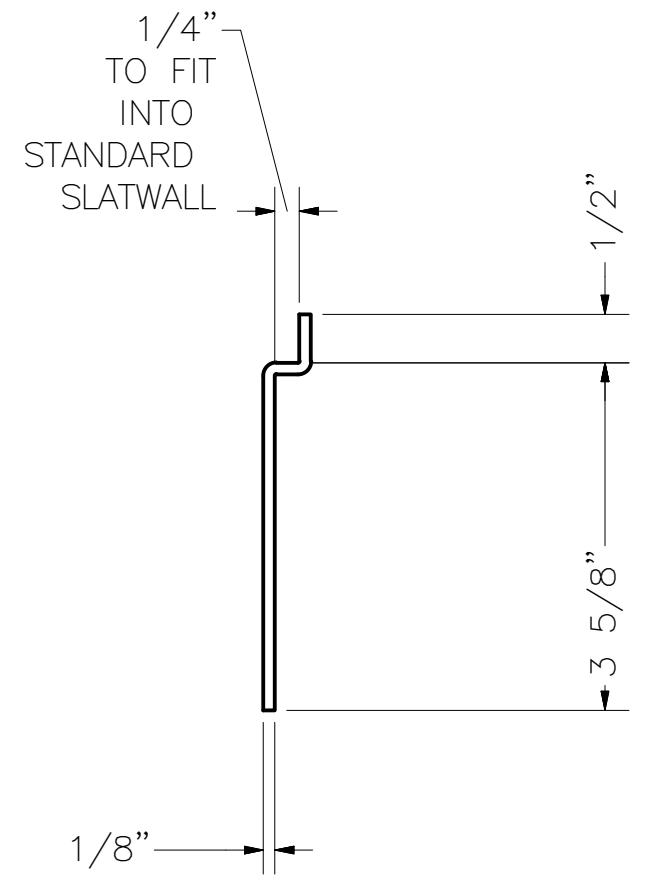
THIS DRAWING IS THE EXCLUSIVE PROPERTY OF REEVE STORE EQUIPMENT CO. WHO HOLDS AND MAINTAINS FULL COPYRIGHT PROTECTION UNDER FEDERAL AND STATE LAW. THIS DRAWING CANNOT BE DUPLICATED, PHOTOCOPIED, DIGITALLY TRANSFERRED, OR REPRODUCED WITHOUT THE EXPRESS WRITTEN CONSENT OF REEVE STORE EQUIPMENT CO. COPYRIGHT 2012, 2011, 2010, 2009, 2008, 2007, 2006, 2005, 2004, 2003, 2002. ALL RIGHTS RESERVED.



SLATWALL BRACKET WIRE BRACE (ITEM No. 2)
 MATERIAL: 5/16" OD WIRE



SLATWALL BRACKET (ITEM No. 3)
 MATERIAL: 11GA. METAL SHEET



UNLESS OTHERWISE SPECIFIED,
 DIMENSIONS ARE INCHES.
 TOLERANCES ARE:

FRACTIONS: +/- 1/32	DECIMALS: .xx +/- .01 .xxx +/- .005	ANGLES: +/- 1/2
------------------------	---	--------------------

FINISH

DO NOT SCALE DRAWING

CUSTOMER SCORPION USA	
APPROVALS	DATE
DRAWN JEL	5/23/2013
CHK'D.	
APVD.	
EQCB No.	

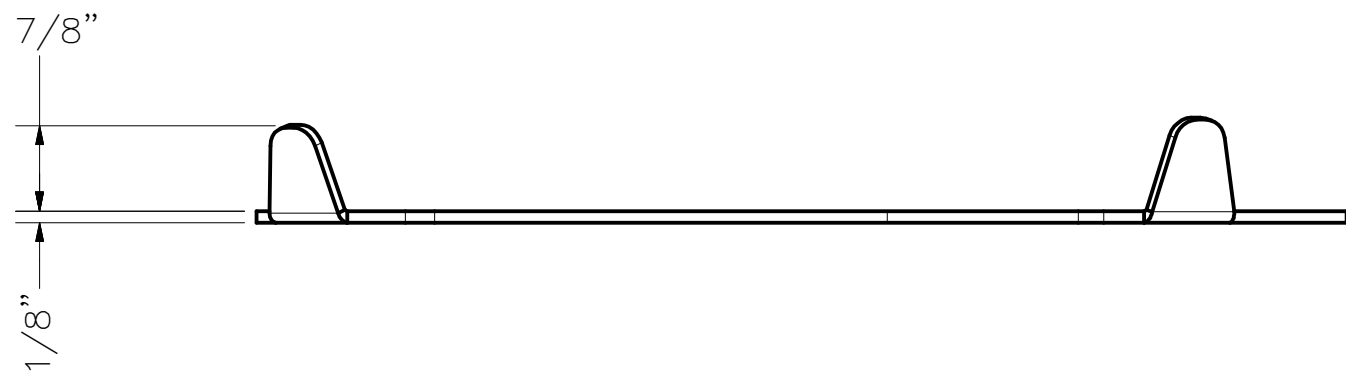
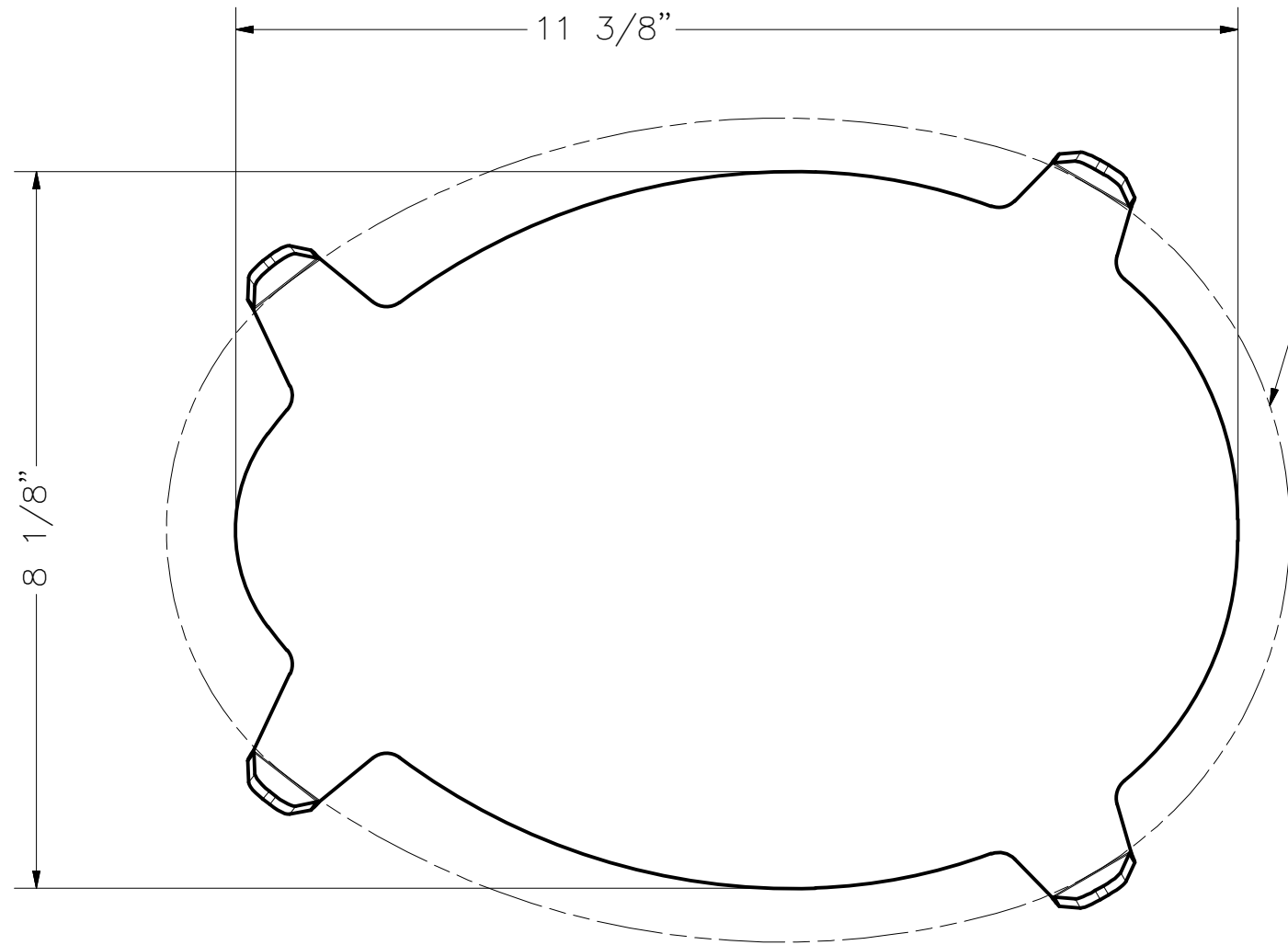
REEVE
 STORE EQUIPMENT CO.
 Pico Rivera, CA. (562) 949-2535

TITLE: **SCORPION HELMET EX500 SLATWALL DISPLAY**

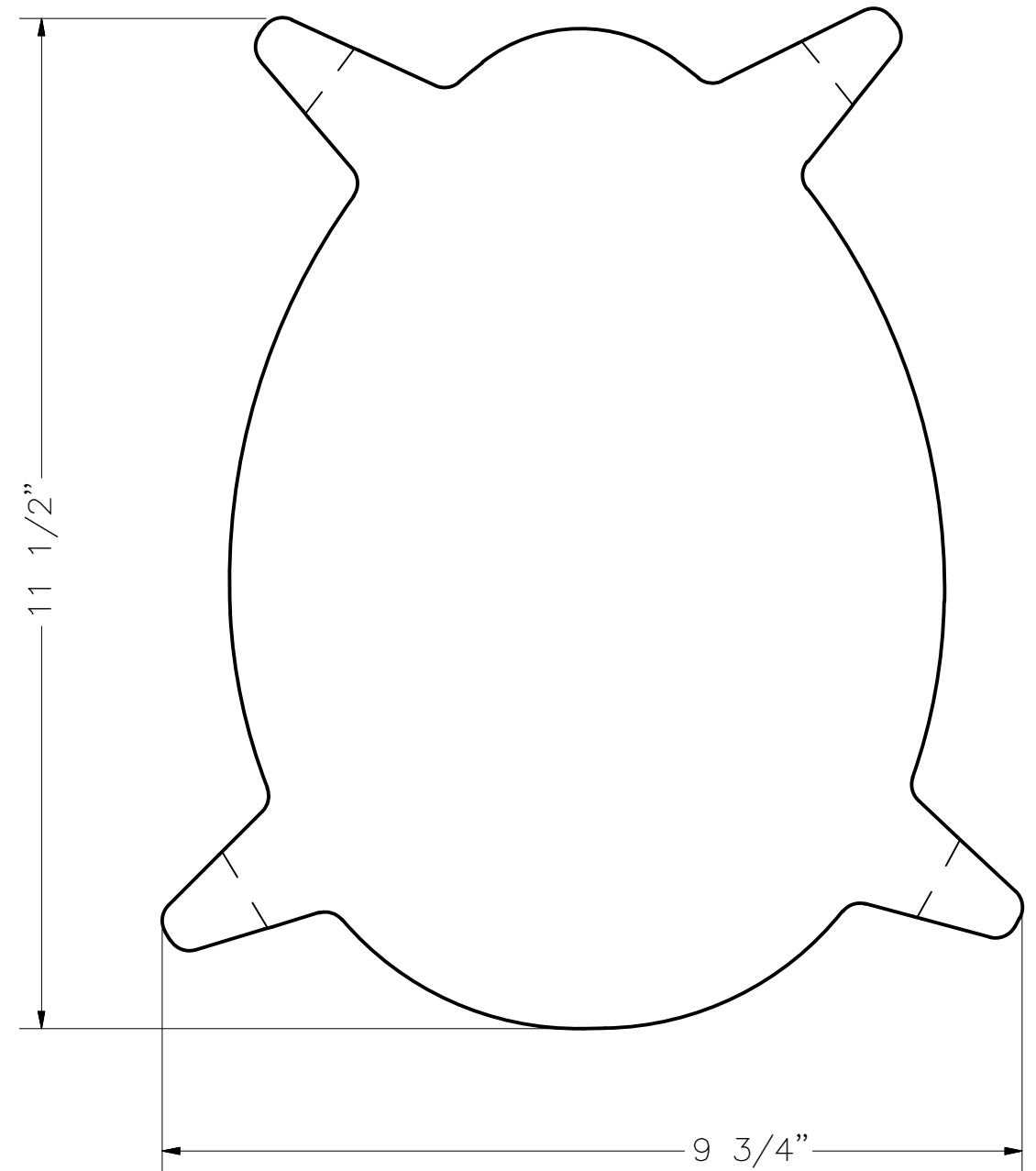
SIZE B DWG. No. **SCRPN-HW-500-REVA** REV.

SCALE: N.T.S. SHEET: 5 OF 8

THIS DRAWING IS THE EXCLUSIVE PROPERTY OF REEVE STORE EQUIPMENT CO. WHO HOLDS AND MAINTAINS FULL COPYRIGHT PROTECTION UNDER FEDERAL AND STATE LAW. THIS DRAWING CANNOT BE DUPLICATED, PHOTOCOPIED, DIGITALLY TRANSFERRED, OR REPRODUCED WITHOUT THE EXPRESS WRITTEN CONSENT OF REEVE STORE EQUIPMENT CO. COPYRIGHT 2012, 2011, 2010, 2009, 2008, 2007, 2006, 2005, 2004, 2003, 2002. ALL RIGHTS RESERVED.



LINE OF BASE OF HELMET

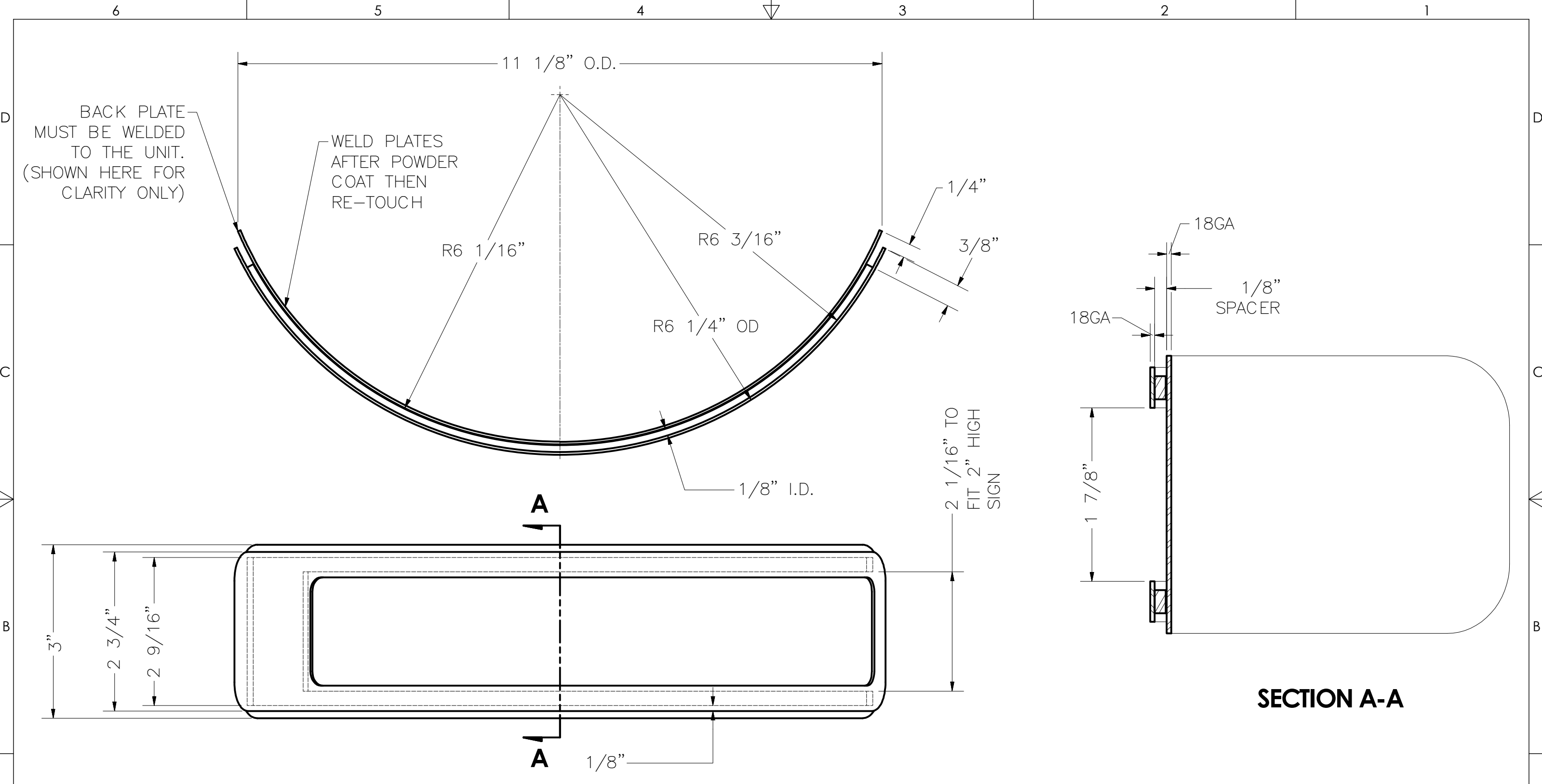


LASER CUT PLATE
MATERIAL: 11GA. C.R.S.

UNLESS OTHERWISE SPECIFIED, DIMENSIONS ARE INCHES. TOLERANCES ARE:			CUSTOMER SCORPION USA	
FRACTIONS: +/- 1/32	DECIMALS: .xx +/- .01 .xxx +/- .005	ANGLES: +/- 1/2	APPROVALS	DATE
FINISH			DRAWN JEL	5/23/2013
			CHK'D.	
			APVD.	
			EQCB No.	
DO NOT SCALE DRAWING				

 STORE EQUIPMENT CO. Pico Rivera, CA. (562) 949-2535		
SCORPION HELMET EX500 SLATWALL DISPLAY		
SIZE B	DWG. No. SCRPN-HW-500-REVA	REV.
SCALE: N.T.S.	SHEET: 6 OF 8	

THIS DRAWING IS THE EXCLUSIVE PROPERTY OF REEVE STORE EQUIPMENT CO. WHO HOLDS AND MAINTAINS FULL COPYRIGHT PROTECTION UNDER FEDERAL AND STATE LAW. THIS DRAWING CANNOT BE DUPLICATED, PHOTOCOPIED, DIGITALLY TRANSFERRED, OR REPRODUCED WITHOUT THE EXPRESS WRITTEN CONSENT OF REEVE STORE EQUIPMENT CO. COPYRIGHT 2012, 2011, 2010, 2009, 2008, 2007, 2006, 2005, 2004, 2003, 2002. ALL RIGHTS RESERVED.



SECTION A-A

UNLESS OTHERWISE SPECIFIED, DIMENSIONS ARE INCHES. TOLERANCES ARE:			CUSTOMER SCORPION USA	
FRACTIONS: +/- 1/32	DECIMALS: .xx +/- .01 .xxx +/- .005	ANGLES: +/- 1/2	APPROVALS	DATE
FINISH			DRAWN JEL	5/23/2013
DO NOT SCALE DRAWING			CHK'D.	
			APVD.	
			EQCB No.	

REEVE
STORE EQUIPMENT CO.
Pico Rivera, CA. (562) 949-2535

TITLE SCORPION HELMET EX500 SLATWALL DISPLAY		REV.
SIZE B	DWG. No. SCRPN-HW-500-REVA	
SCALE: N.T.S.	SHEET: 7 OF 8	

THIS DRAWING IS THE EXCLUSIVE PROPERTY OF REEVE STORE EQUIPMENT CO. WHO HOLDS AND MAINTAINS FULL COPYRIGHT PROTECTION UNDER FEDERAL AND STATE LAW. THIS DRAWING CANNOT BE DUPLICATED, PHOTOCOPIED, DIGITALLY TRANSFERRED, OR REPRODUCED WITHOUT THE EXPRESS WRITTEN CONSENT OF REEVE STORE EQUIPMENT CO. COPYRIGHT 2012, 2011, 2010, 2009, 2008, 2007, 2006, 2005, 2004, 2003, 2002. ALL RIGHTS RESERVED.

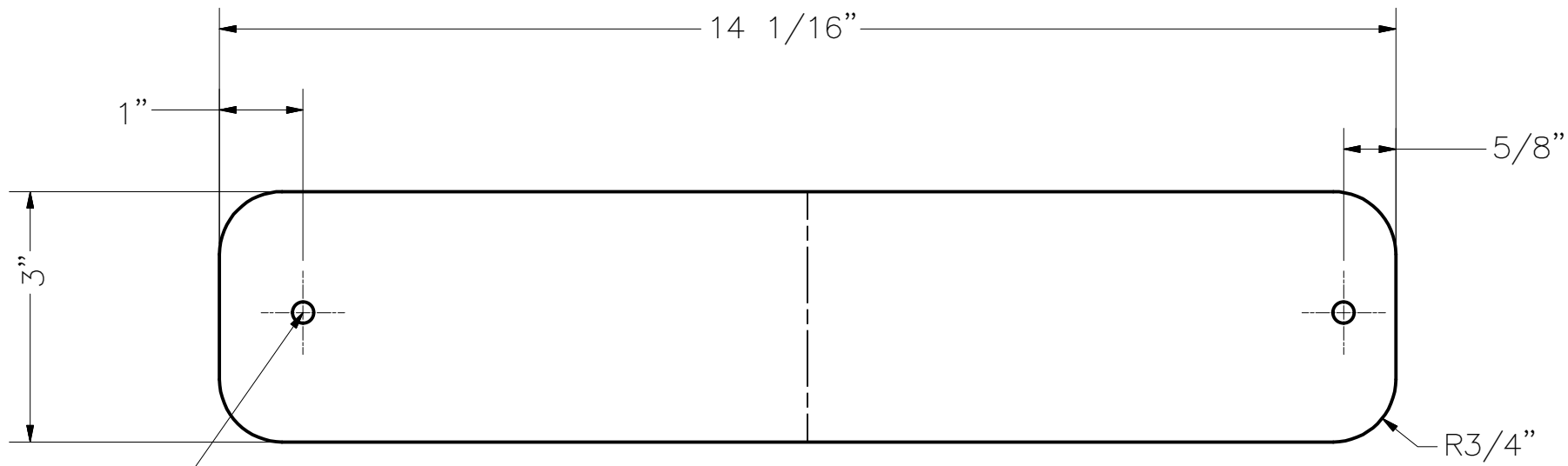
6 5 4 3 2 1

D

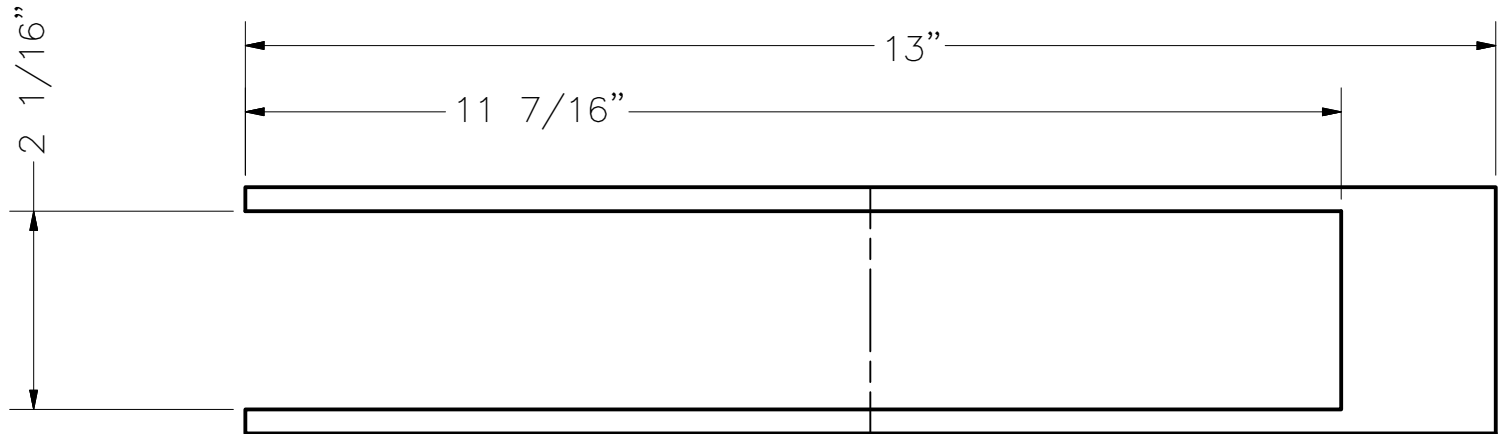
C

B

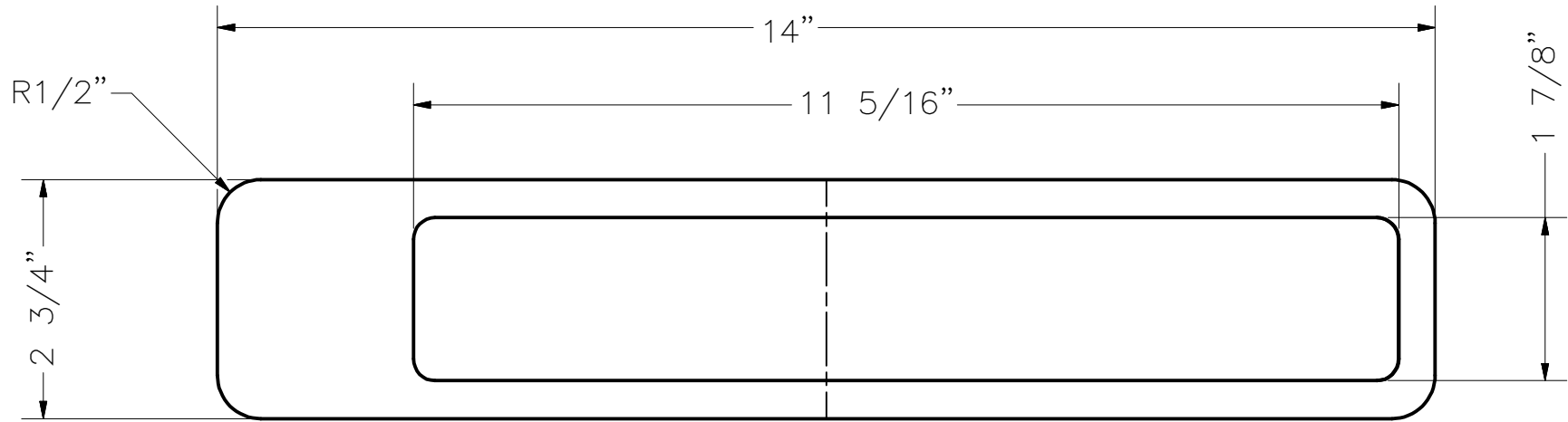
A



HOLE TO PLUG WELD FRONT PLATES
SIGNHOLDER-BACK PLATE (FLAT PATTERN)
 MATERIAL: 18GA. PLATE



SIGNHOLDER-SPACER (FLAT PATTERN)
 MATERIAL: 11GA. PLATE



SIGNHOLDER-FRONTPLATE (FLAT PATTERN)
 MATERIAL: 18GA. PLATE

UNLESS OTHERWISE SPECIFIED, DIMENSIONS ARE INCHES. TOLERANCES ARE:			CUSTOMER SCORPION USA	
FRACTIONS: +/- 1/32	DECIMALS: .xx +/- .01 .xxx +/- .005	ANGLES: +/- 1/2	APPROVALS	DATE
FINISH			DRAWN JEL	5/23/2013
			CHK'D.	
			APVD.	
			EQCB No.	
DO NOT SCALE DRAWING				

 STORE EQUIPMENT CO. Pico Rivera, CA. (562) 949-2535			TITLE	SCORPN-HW-500-REVA	REV.
			SCORPION HELMET EX500 SLATWALL DISPLAY		
SIZE B	DWG. No.		SCALE: N.T.S.	SHEET: 8 OF 8	

THIS DRAWING IS THE EXCLUSIVE PROPERTY OF REEVE STORE EQUIPMENT CO. WHO HOLDS AND MAINTAINS FULL COPYRIGHT PROTECTION UNDER FEDERAL AND STATE LAW. THIS DRAWING CANNOT BE DUPLICATED, PHOTOCOPIED, DIGITALLY TRANSFERRED, OR REPRODUCED WITHOUT THE EXPRESS WRITTEN CONSENT OF REEVE STORE EQUIPMENT CO. COPYRIGHT 2012, 2011, 2010, 2009, 2008, 2007, 2006, 2005, 2004, 2003, 2002. ALL RIGHTS RESERVED.

6 5 4 3 2 1