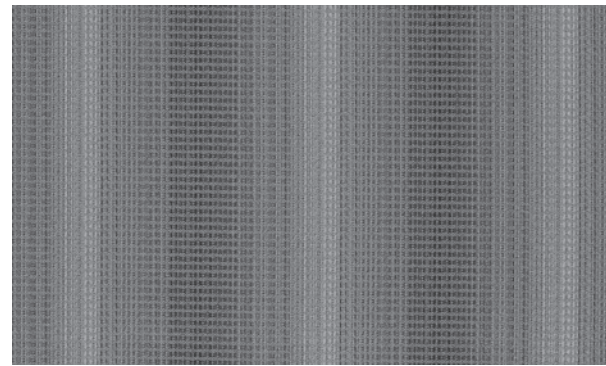


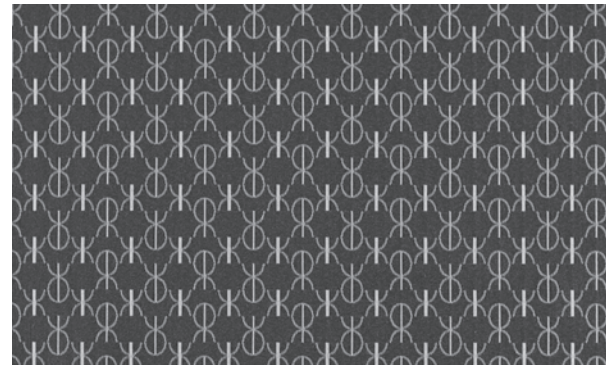
BATIK – Approx. Repeat: 2.5" H, 5" V



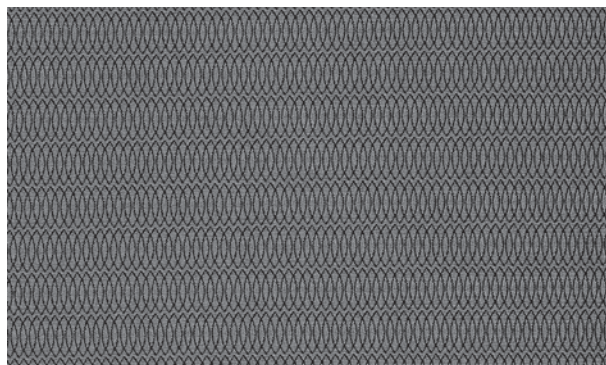
INTRIGUE – Approx. Repeat: 5.375" H, 0.1875" V
Shown Railroaded



MEANDER – Approx. Repeat: 14.3" H, 9.5" V Random Match

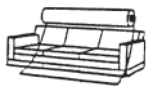


MONOGRAM – Approx. Repeat: 1.1875" H, 2.125" V
Shown Railroaded

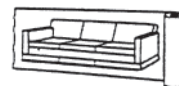


REVERB – Approx. Repeat: 0.375" H, 1.875" V

Railroaded: This feature allows reduction of seams and enables smoother furniture tailoring.



Fabric "up the roll" or "regular" position



Fabric "railroaded" or "top selvage" position

We recommend Intrigue and Monogram patterns should be upholstered as shown on card.

REDUCED ENVIRONMENTAL IMPACT

These products are GREENGUARD Certified or GREENGUARD Gold Certified for low chemical and particle emissions to UL standard UL 2818 and may contribute to LEED certification. For complete information visit mayerfabrics.com and UL.com/gg.

Florentino

Phthalates listed on Prop 65 were not used in production.
16P Free – 16 Phthalates were not used in production (BBP, DCHP, DNPP, DPp, DEP, DNHP, DIBP, DINP, DIDP, DNNP, DIOP, DEHP, DBP, DMP, DNOP, DBZP)
Lead/Heavy Metal Free Tris Free Does not contain conflict minerals
Phthalate and Lead Free to meet CPSC/CPSIA (children's products) environmental and health standards.

Meander, Reverb, Shantung

Eco-System[®]
Sustainable. Attainable at Mayer Fabrics. The Eco-System icon indicates 100% recycled content.

Echo, Intrigue, Monogram
facts[™]
Gold The Facts icon indicates that a textile has been evaluated based on the requirements of the multi-attribute sustainability standard NSF/ANSI 336 through an independent third-party certification body authorized by the Association for Contract Textiles.

Meander, Reverb
facts[™]
Silver The Facts icon indicates that a textile has been evaluated based on the requirements of the multi-attribute sustainability standard NSF/ANSI 336 through an independent third-party certification body authorized by the Association for Contract Textiles.

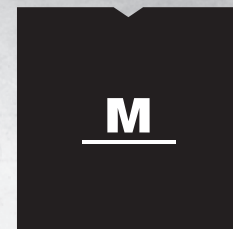
Meander, Reverb

REPREVE[®] Repreve[®] polyester is made from post-consumer plastic bottles and pre-consumer fiber waste, making it one of the most earth-friendly fabric ingredients you'll find anywhere. The proprietary Repreve process took years to develop and is third party certified for recycled content. The production of Repreve polyester conserves energy and natural resources by offsetting the need to produce virgin polyester fiber, creating a reprieve for the planet. Repreve is a trademark of Unifi, Inc.

Monogram

Cradle to Cradle
This pattern has been Cradle to Cradle certified gold by MBDC for its material content, recyclability, and manufacturing characteristics. c2ccertified.com

Intrigue Fabric Collection



MAYERFABRICS



Indiana
FURNITURE

TECHNICAL INFORMATION

Intrigue Coordinates

Pattern 54"	Content and Backing	Certifications	Weight/ Linear Yd.	Pattern Repeat	Finish	Abrasion Wyzenbeek	Light-Fastness	Flammability	Cleaning Code	Grade*
BATIK <i>Directional</i>	51% Recycled Polyester (35% Post-/16% Pre-Consumer), 49% Polyester Backing; Acrylic	GREENGUARD Gold	8.464 oz.	2.5" H, 5" V	Stain Repellent	51,000 Double Rubs	40 hours	Cal. 117-2013 NFPA 260/UFAC Class 1	WS, BC	3
ECHO <i>Directional</i>	96% Recycled Polyester (62% Post-/14% Pre-Consumer), 4% Polyester Backing; None	GREENGUARD Gold, Facts Gold	14.83 oz.	0.8125" H, 0.25" V	None	70,000 Double Rubs	60 hours	Cal. 117-2013 NFPA 260/UFAC Class 1 ASTM E84 Class 1 or A	WS	4
FLORENTINO	100% Vinyl Backing: 100% Polyester Knit	GREENGUARD	28 oz.	None	Resilience SM	651,000 ^A Double Rubs	650 hours	Cal. 117-2013 NFPA 260/UFAC Class 1 BIFMA FMVSS 302 IMO FTP 2010 Part 8, 3.1 & 3.2	WS, BC, Resilience Cleaning	2
INTRIGUE <i>Directional</i> <i>Shown Railroaded</i>	32% Post-Consumer Recycled Polyester, 68% Polyester Backing; None	GREENGUARD Gold, Facts Gold	11 oz.	5.375" H, 0.1875" V	None	175,000 ^A Double Rubs	60 hours	Cal. 117-2013 NFPA 260/UFAC Class 1	WS	3
MEANDER <i>Directional</i>	100% Recycled Polyester (52% Pre-/48% Repreve Post-Consumer) Backing; None	GREENGUARD Gold, Facts Silver	9.6 oz.	14.3" H, 9.5" V Random Match	None	75,000 Double Rubs	60 hours	Cal. 117-2013 NFPA 260/UFAC Class 1 ASTM E84 Class 1 or A	WS	3
MONOGRAM <i>Directional</i> <i>Shown Railroaded</i>	100% Eco Intelligent Polyester ANTIMONY FREE Backing; None	GREENGUARD Gold, Facts Gold, MBDC Gold	10.22 oz.	1.1875" H, 2.125" V	None	100,000 ^A Double Rubs	60 hours	Cal. 117-2013 NFPA 260/UFAC Class 1	WS	4
PATIO <i>Directional</i>	100% Polyester Backing: Acrylic	GREENGUARD Gold	11.536 oz.	1.875" H, 1.25" V	Stain Repellent	51,000 Double Rubs	40 hours	Cal. 117-2013 NFPA 260/UFAC Class 1	WS, BC	3
REVERB <i>Directional</i>	100% Recycled Polyester (52% Repreve Post-/48% Pre-Consumer) Backing; None	GREENGUARD Gold, Facts Silver	9.3 oz.	0.375" H, 1.875" V	None	100,000 ^A Double Rubs	60 hours	Cal. 117-2013 NFPA 260/UFAC Class 1 ASTM E84 Class 1 or A	WS	3
SHANTUNG <i>Directional</i>	100% Recycled Polyester (65% Pre-/35% Post-Consumer) Backing: Polyester	GREENGUARD Gold	10.688 oz.	Non-Matching	None	51,000 Double Rubs	40 hours	Cal. 117-2013 NFPA 260/UFAC Class 1	WS	3
VALET <i>Directional</i>	100% Polyester Backing: Acrylic	GREENGUARD Gold	14.912 oz.	0.063" H, 1.818" V	Stain Repellent	50,000 Double Rubs	40 hours	Cal. 117-2013 NFPA 260/UFAC Class 1	WS, BC	3

*The Grade shown is based on 2015 list prices.

CLEANING INFORMATION

WS: Water/Solvent Cleaner BC: Bleach Cleanable – 1 part bleach, 9 parts water = 10% bleach, 90% water solution. Do not clean/disinfect fabric for longer than 10 minutes using the 10% bleach solution. Always rinse promptly with clean water after applying the bleach solution. Failure to do so will void any and all warranties.

Florentino

Recommended Care and Cleaning Steps

Prompt cleaning is always recommended. Please follow the cleaning guide by type of stain.
Regular Cleaning and Maintenance (Dirt, Dust, Grime): Clean the soiled area with mild soap and water, then rinse with fresh water and wipe dry with a clean cloth.
Food Stains/Oils (Ketchup, Chocolate, Coffee, Tea, Juice): Wipe affected area with a soft cloth or soft bristle brush using a non-abrasive cleaner, for example Formula 409[®] or Fantastik[®]. Rinse with fresh water and wipe dry.
Healthcare (Blood, Urine, Betadine): Clean/disinfect the soiled area with a 10% solution of household bleach and water. It is important to rinse the cleaned area with fresh water after applying the bleach solution.
Difficult Stains (Eye shadow, Mascara, Lipstick, Crayon): Clean the soiled area with 50% solution of isopropyl alcohol (rubbing alcohol) and water. It is important to rinse the cleaned area with fresh water after applying the alcohol solution.

NOTE: The use of commercial vinyl conditioners and protectants is NOT RECOMMENDED. The information in this cleaning guide refers to performance of Resilience in specific tests conducted under laboratory conditions. This information does not imply a specific guarantee and does not relieve the user from the responsibility of the proper and safe use of the product and referenced cleaning agents.

ADDITIONAL INFORMATION

Cal TB 133: All patterns may comply with California Technical Bulletin 133 when combined with appropriate components.
^AAbrasion: Multiple factors affect fabric durability and appearance retention, including end-user application and proper maintenance. Wyzenbeek results above 100,000 double rubs have not been shown to be a reliable indicator of increased fabric lifespan.
Custom Capabilities: All patterns can be custom colored. Minimum yardage applies.
Specifications: Specifications are correct at the time of printing. Current detailed specifications are available on our website.



These fabrics meet or exceed these ACT performance guidelines.
Certification Marks owned by ACT



1224 Mill Street P.O. Box 270 Jasper, IN 47547
t 812.482.5727 or 800.422.5727 f 812.482.9035
www.indianafurniture.com



t 317.267.2626 or 800.428.4415 f 317.267.2629 or 877.7SAMPLE
www.mayerfabrics.com
©2015 Mayer-Paetz, Inc.

IFICCD
50915

212-5036 (L)

212-5036 (L)	1.25" X .625		
ECHO 388-002 Chrome Yellow	ECHO 388-009 Blaze	ECHO 388-001 Vermillion	ECHO 388-005 Aubergine
2.5" X 1.625		1.75" X 2.375	1.125" X 1
MEANDER 419-002 Dijon			MONOGRAM 381-002 Butterscotch
1.125" X 1.625	1" X .625		
REVERB 421-002 Mellow	VALET 399-002 Chamois	BATIK 396-009 Amber	PATIO 420-002 Sunshine
		3.25" X .875	
SHANTUNG 373-009 Copper		INTRIGUE 382-009 Fiesta	
PATIO 420-001 Sangria		VALET 399-009 Amber	
		SHANTUNG 373-001 Garnet	REVERB 421-009 Tangelo
MONOGRAM 381-001 Rouge	BATIK 396-008 Ablaze		
INTRIGUE 382-001 Sunset		MEANDER 419-001 Pomegranate	
.925" X .625			
FLORENTINO FT-012 Dijon	FLORENTINO FT-029 Mango	FLORENTINO FT-009 Chili	FLORENTINO FT-011 Lipstick
			FLORENTINO FT-008 Plum

Additional colors are available. Please refer to the Mayer Fabrics website.

212-5036 (M)

212-5036 (M)			
ECHO 388-013 Apple Green	ECHO 388-034 Turquoise	ECHO 388-014 Cerulean	ECHO 388-004 Cobalt
MEANDER 419-014 Surf			MONOGRAM 381-003 Emerald
		BATIK 396-003 Limeade	PATIO 420-003 Jungle
REVERB 421-013 Caribbean	VALET 399-013 Jadeite		
		INTRIGUE 382-014 Sky	
PATIO 420-004 Oceanic		VALET 399-004 Oceanic	
		SHANTUNG 373-034 Marina	REVERB 421-004 Marine
MONOGRAM 381-004 Indigo	BATIK 396-004 Seaworthy		
INTRIGUE 382-004 Baltic		MEANDER 419-004 Bluebell	
FLORENTINO FT-033 Willow	FLORENTINO FT-043 Basil	FLORENTINO FT-044 Turquoise	FLORENTINO FT-034 Bluejay
			FLORENTINO FT-004 Sapphire

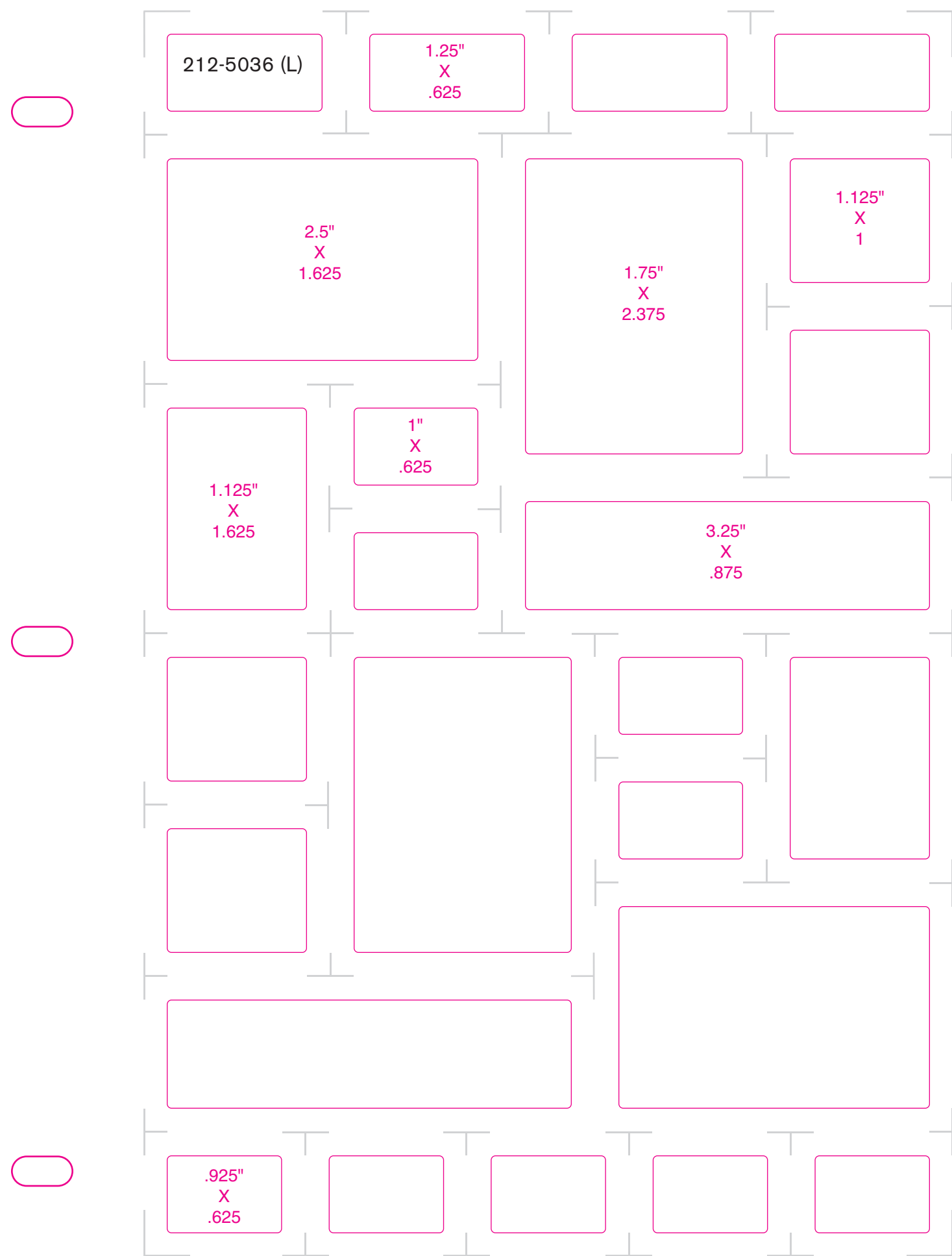
Additional colors are available. Please refer to the Mayer Fabrics website.

212-5036 (R)

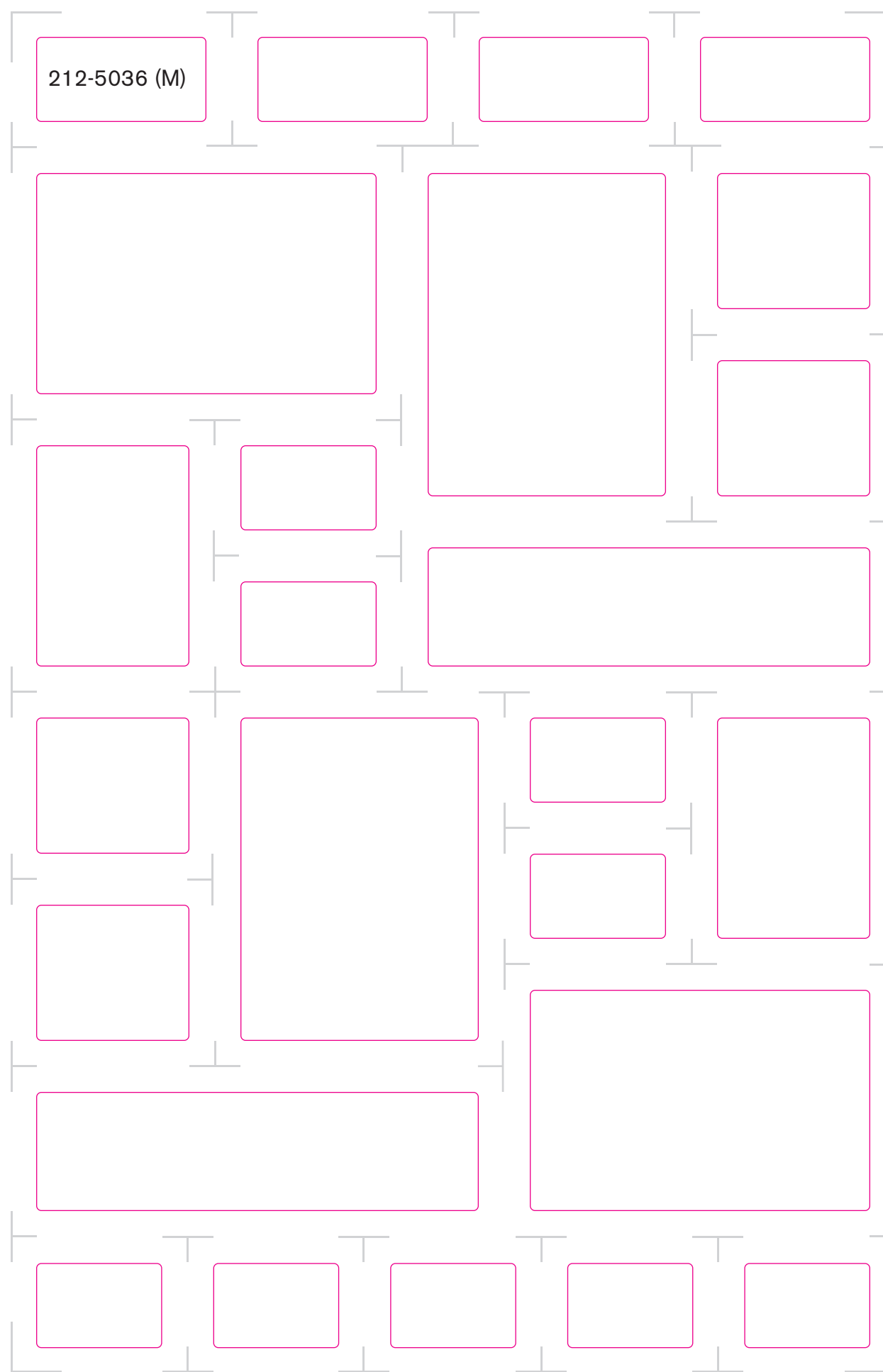
212-5036 (R)			
ECHO 388-017 French Beige	ECHO 388-000 Sable	ECHO 388-010 Smokey Taupe	ECHO 388-006 Ebony
MEANDER 419-017 Almond			MONOGRAM 381-007 Opal
		BATIK 396-007 Sandalwood	PATIO 420-007 Vellum
REVERB 421-007 Taupe	VALET 399-007 Pearl		
		INTRIGUE 382-007 Misty	
PATIO 420-000 Basket		VALET 399-020 Truffle	
		SHANTUNG 373-000 Bark	REVERB 421-000 Granite
MONOGRAM 381-006 Ebony	BATIK 396-000 Ember		
INTRIGUE 382-006 Dusk		MEANDER 419-000 Bark	
FLORENTINO FT-017 Biscuit	FLORENTINO FT-037 Mushroom	FLORENTINO FT-010 Latte	FLORENTINO FT-026 Dove
			FLORENTINO FT-006 Jet

Additional colors are available. Please refer to the Mayer Fabrics website.

212-5036 (L)



212-5036 (M)



212-5036 (R)

