



265 BOBCAT ANGUS LOOP
GALATA, MT 59444

Bryan & Cathy Ratzburg
John & Debi Goggins
Ernie & Jayne Ratzburg

FIRST-CLASS MAIL
PRESORTED
US POSTAGE PAID
GREAT FALLS, MT
PERMIT NO. 211

CHANGE SERVICE REQUESTED

Bobcat Angus

Galata, Montana



11th Annual PRODUCTION SALE

November 23, 2015

Cathy-
Hope to see you at the sale.
Come early and view the stock
and have lunch on us!

- BOBCAT ANGUS
CREW



www.bobcatangus.com



Western Livestock Auction

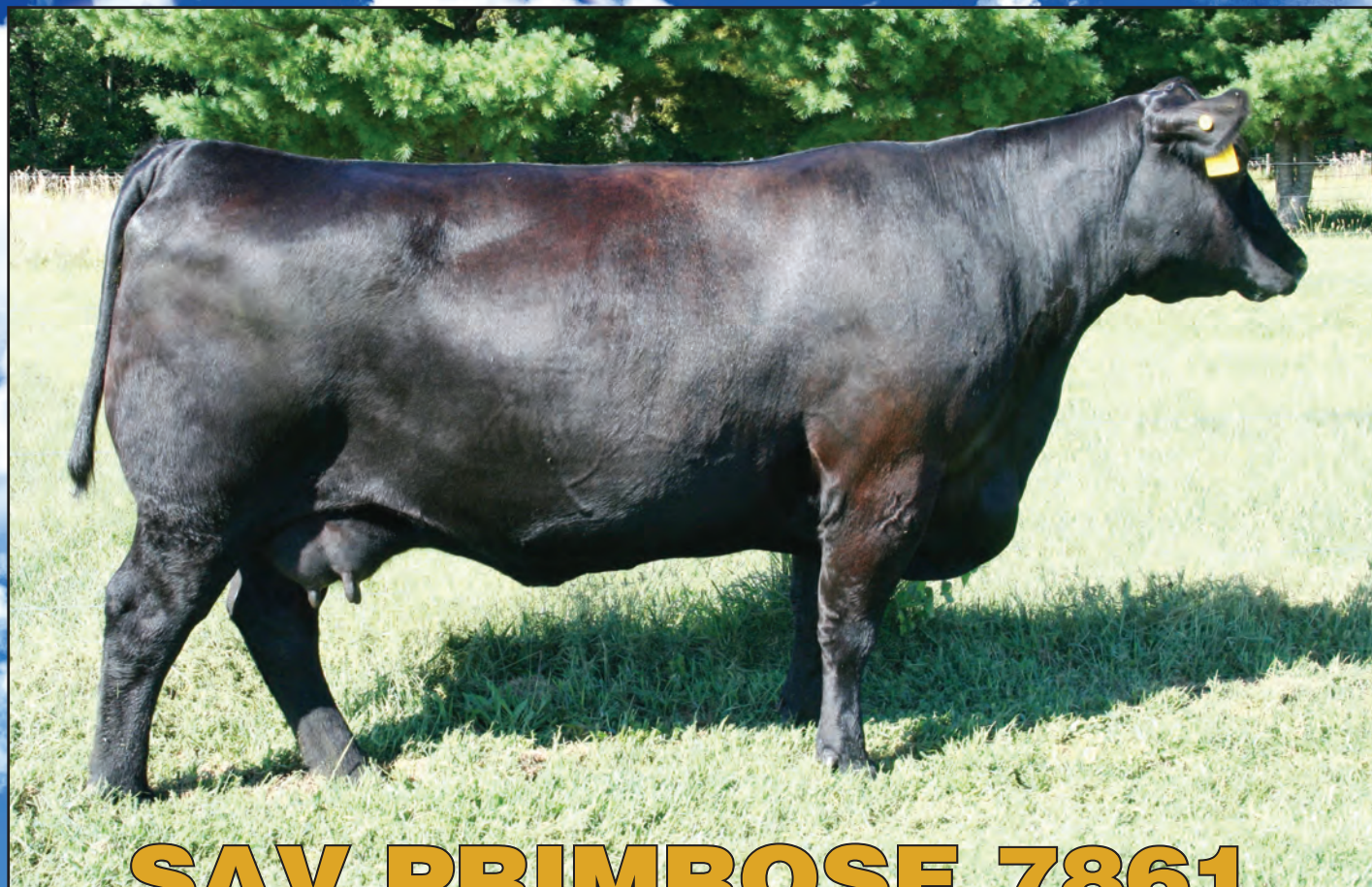
Great Falls, Montana · LUNCH 12:00 NOON · SALE 1:00 PM



www.bobcatangus.com



B DAM OF MUSGRAVE BIG SKY



SAV PRIMROSE 7861

PRODUCTION EPDS				MATERNAL EPDS			\$ VALUES			
CED	BW	WW	YW	CEM	MILK	\$W	\$F	\$G	\$B	
+9	+2.1	+56	+102	+12	+29	+53.33	+64.61	+32.61	+112.06	

5 NR 107 5 YR 107

S A F 598 Bando 5175 #

(Reg: 15796298)

S A V Primrose 8244 #

Bon View Bando 598 #

S A F Royal Lass 1002

Sitz Traveler 9929 #

S A V Primrose Star 1815

Tehama Bando 155 #
Bon View Dora 56 #
V D A R New Trend 315 #
S A F Royal Lass 6089
D H D Traveler 6807 #
Sitz Everelda Entense 1137
Fairfield Dark Star P57 #
S A R Noble Primrose 915

Arguably one of the greatest Angus cows of the breed! She stems from the same Primrose cow family that produced N Bar Emulation EXT. We purchased this great donor female from Musgrave Angus this past spring. She was bred to have a fall calf and has a phenomenal son of SAV International at her side. She is now in our "Donor-Pen" and you will see many sons and daughters out of her in the coming years. Primrose is great in her udder shape, massive in her rib, excellent feet and legs, long made and feminine as you can make one!



265 Bobcat Angus Loop, Galata, MT 59444
Bryan Ratzburg: (406) 937-5858 Cell: (406) 788-3272
Ernie Ratzburg: Cell: (406) 788-3244
John Goggins: (406) 698-4159
www.bobcatangus.com
Email: bobcatangus@northerntel.net



NOT YOUR TYPICAL LINE OF "BS"

No Doubt About This "BS"



It's BIG SKY!

Connealy Consensus
Connealy Earnan 076E
Brazila of Conanga 3991 839A

S A F 598 Bando 5175 #
SAV Primrose 7861
S A V Primrose 8244 #

KMK Alliance 6595 187 #
Blinda of Conanga 004
Connealy Tobin
Breesha of Conanga 1251
Bon View Bando 598 #
S A F Royal Lass 1002
Sitz Traveler 9929 #
S A V Primrose Star 1815

DOB: 01/16/2013
(Reg # 17614813)

BW 86 Adj.205 915 NR 123 Adj.365 1469 YR 121 Adj. IMF 5.70 Adj. REA 14.7

PRODUCTION EPDS				MATERNAL EPDS			\$ VALUES			
CED	BW	WW	YW	CEM	MILK	\$W	\$F	\$G	\$B	
+3	+1.8	+83	+138	+8	+23	+89.69	+116.85	+41.83	+154.67	
CARCASS EPDS: CW +40 ACC .22 MARB +.99 ACC .32 RE +.43 ACC .29 FAT +.028 ACC .30										



265 Bobcat Angus Loop, Galata, MT 59444
Bryan Ratzburg: (406) 937-5858 Cell: (406) 788-3272
Ernie Ratzburg: Cell: (406) 788-3244
John Goggins: (406) 698-4159
www.bobcatangus.com
Email: bobcatangus@northerntel.net

Weaning weights on Big Sky calves have been coming in from all over the United States. So far 156 calves have a birthweight ratio of 100 and weaning weight ratio of 102.

Semen \$35/straw
Certificates \$35

39317 290th Ave - Griggsville, IL



Melvin Musgrave 217.285.6636
Andy Musgrave 217.242.2732
Tyler Musgrave 217.242.1160
www.musgraveangus.com