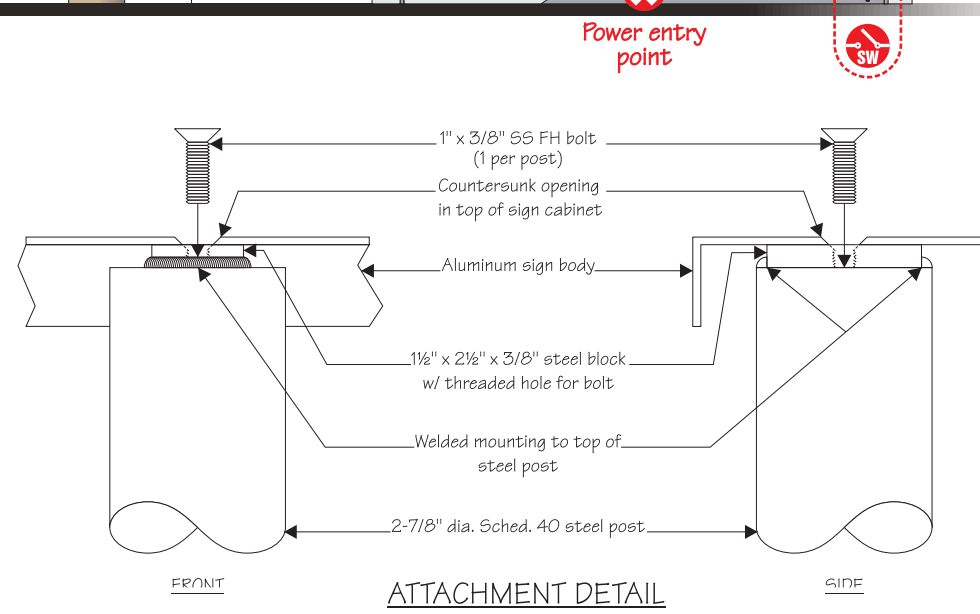


SERIES 7 MAIN ID - Single/Double Sided - Illuminated

- 106" x 60" SignComp series 7 hingebody extruded aluminum cabinet
- Dual series 7 half radius ends
- 1/2" vertical reveals
- 2" base reveal
- 108" grade to top of sign
- Dual internal 2-7/8" dia. steel posts - EXISTING
- Hinged bleed retainers
- Header to have a translucent fiberglass face attached to retainer, w/ convex aluminum addition having routed logo backed w/ trans. White acrylic
- Convex panel and top of sign to be painted MPA 46253 SP Copper
- Copy has first surface 3M Smoke Gray vinyl
- Cactus logo is digitally printed PMS 5767 trans Green
- 10 3/4" x 60" EMERGENCY panel to be Calon #33 Red trans. vinyl cut to illuminate White letters on a Red background
- Area just above EMERGENCY panel to be opaque painted D&E 6048 Pine Cone Brown
- (5-6) 9" x 60" x 1/8" thick stud mounted aluminum panels
- Panels are routed and backed w/ 1/8" White trans. acrylic
- Panels are attached to 1x2 support bars
- Base panel to be routed and backed w/ 1/8" White trans. acrylic
- Digitally printed compass symbol is first surface applied to acrylic
- Faces and half radius ends are painted D&E 6208 Tuscan Mosaic Tan
- All returns are painted D&E 6048 Pine Cone Brown
- All electrical service to be 277v
- Illumination by (8) 96" T12 HO fluorescent lamps
- Estimated service load is 3.12A @ 277v



SIGN TYPE B