



KARAN VIJ  
DIGITAL DESIGN FOLIO 2015



# MOODBOARD



ATTENTION TO DETAIL

ADAPTABLE

PASSIONATE

TEAMWORK

UPDATED

POWER CRAZY

## ACADEMIC QUALIFICATION

**Masters Degree** in Digital Design Management  
DSK Institut Superior de Design, Pune, IN (2014-2016)  
**Bachelor of Technology** in Automobile Engineering  
SRM University, Chennai, IN (2004-2008)

## PROFESSIONAL EXPERIENCE

**Programmer Analyst**, Cognizant Technology Solutions, Chennai, IN  
(2009-2014) - Datawarehouse designer; using tools like Informatica,  
Cognos and SQL.

## INTERNSHIP EXPERIENCE

**FORD** Motor India Limited, Chennai, IN (Two weeks training) - Studied  
about various manufacturing processes employed in the Automotive  
Manufacturing industry.  
**TVS** Sundaram Brakes India Limited, Chennai, IN (Two weeks training) -  
Compiled a detailed report on various Brake Linings' composition and  
processes used.  
**TAFE** India Limited (EICHER), Bhopal, IN (Four Weeks Training) - Pre-  
pared a 'Variant Card' visual parts guide for the various models on the  
production line.

## CURRICULUM VITAE

## SKILLSET

**Autodesk Alias 2015**, Solidworks 2014, **Keyshot 5.0**, Autodesk Maya  
2015, CATIA V6R2013, Adobe Illustrator CC 2015, **Adobe Photoshop  
2014**, Autodesk VREDDesign 2015, **Microsoft Office Suite 2010**,  
**Informatica v9.1**, SQL, OBIEE 11g

## CONTACT INFORMATION

Phone- +91-996-243-8068  
E-mail- karan.vij@dskisd.com  
Skype- karrannv



# CONTENTS



01  
MICHELIN



02

ASTON MARTIN



03

VW GOLF R WHEEL



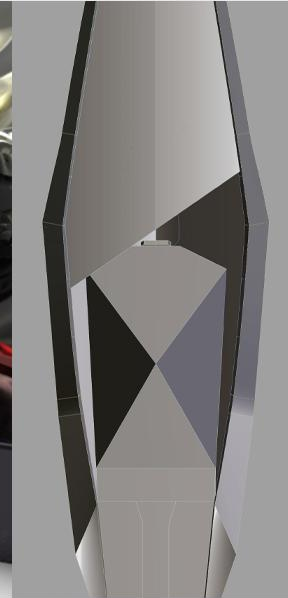
04

EXHAUST SPEAKERS



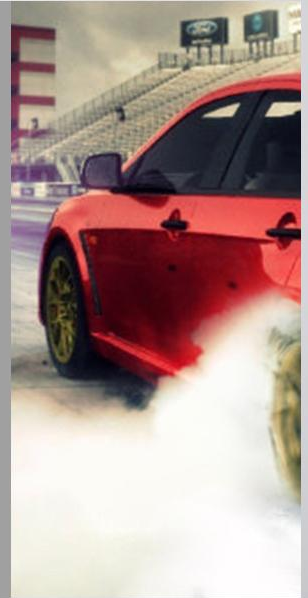
05

POWERBOAT



06

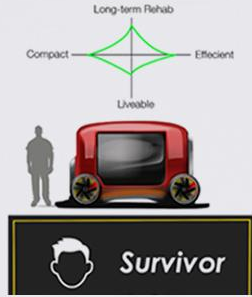
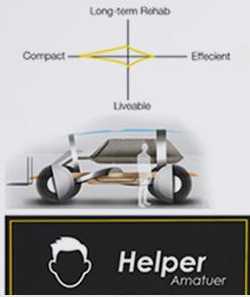
VISUALISATION



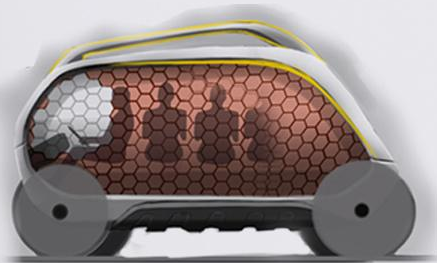
BRIEF - TO DESIGN A VEHICLE FOR AN UNDERSERVED AREA



# ANALYSIS



+



COMBINING ALL THREE

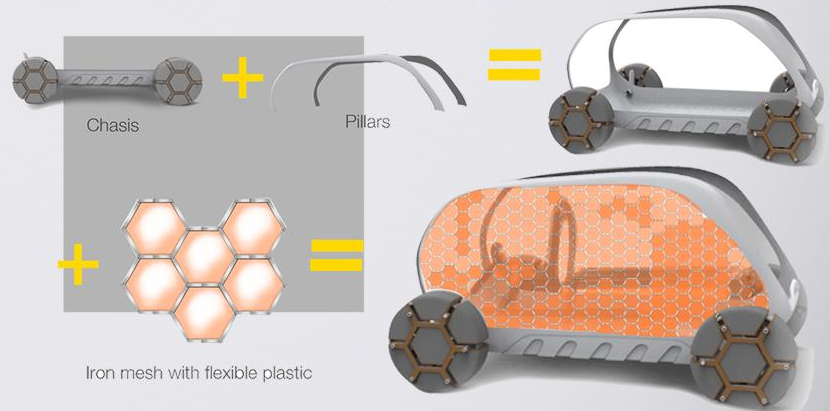


Volume renders



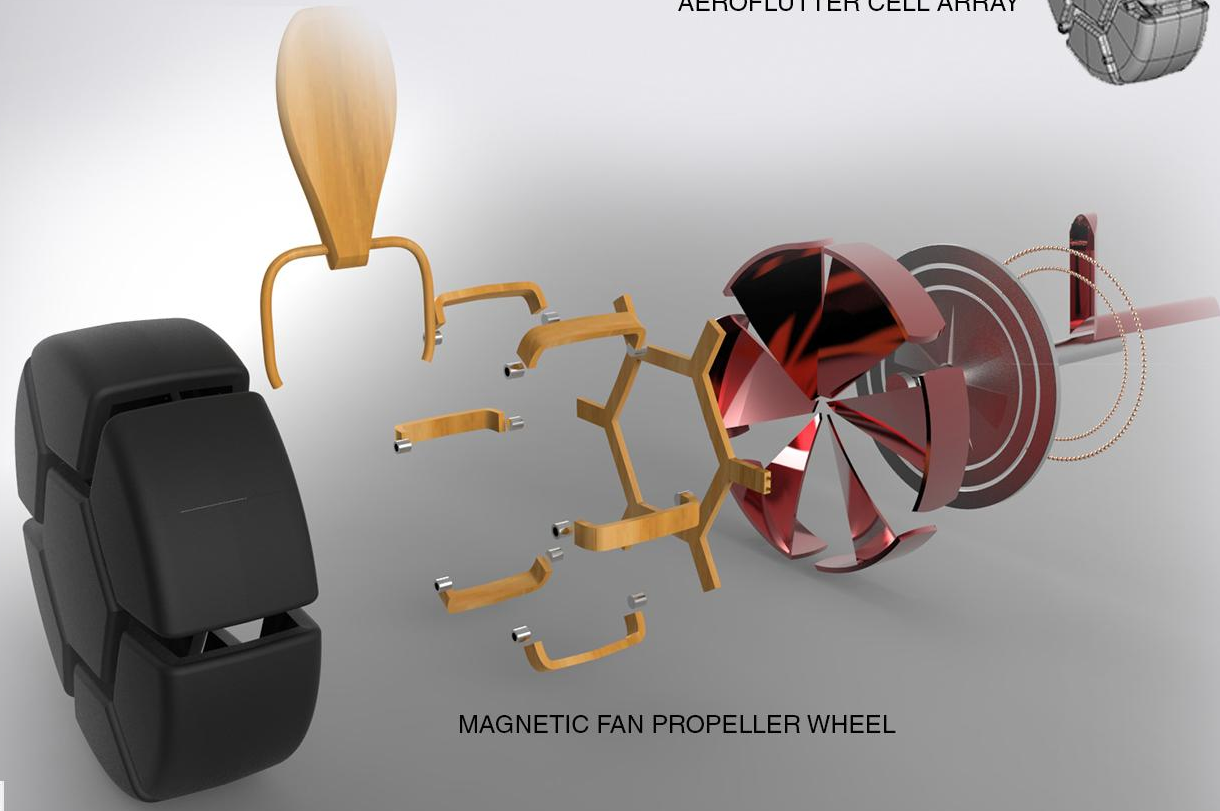
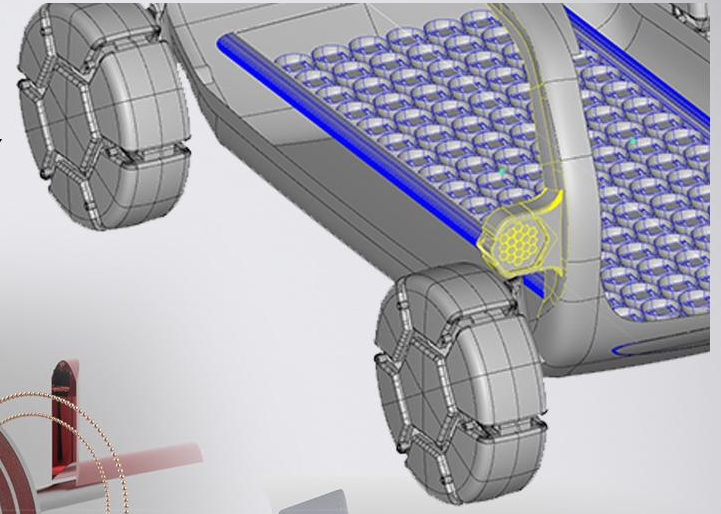
# STRUCTURE

18° 29' 15.27" N  
75° 29' 46.97" E

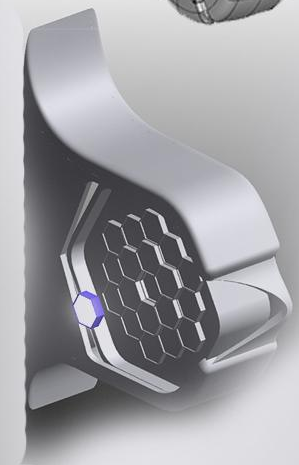


# WHEEL AND VEHICLE DETAILS

AEROFLUTTER CELL ARRAY



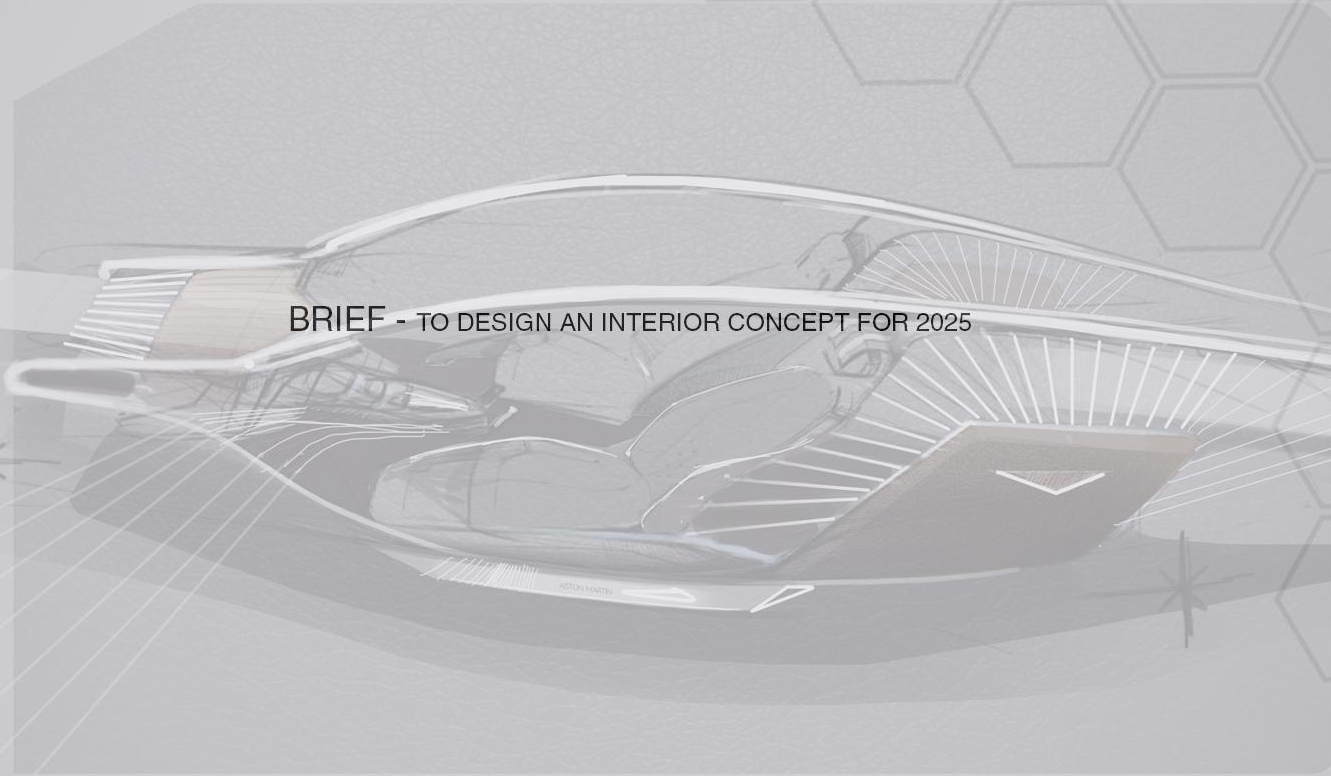
MAGNETIC FAN PROPELLER WHEEL



LANTERN / TORCH HEADLAMP



BRIEF - TO DESIGN AN INTERIOR CONCEPT FOR 2025

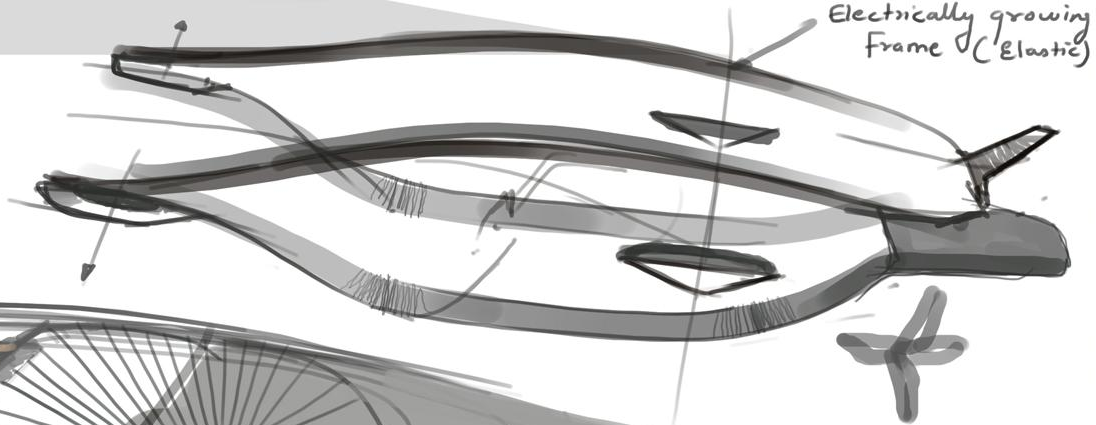


## DESIGN LANGUAGE

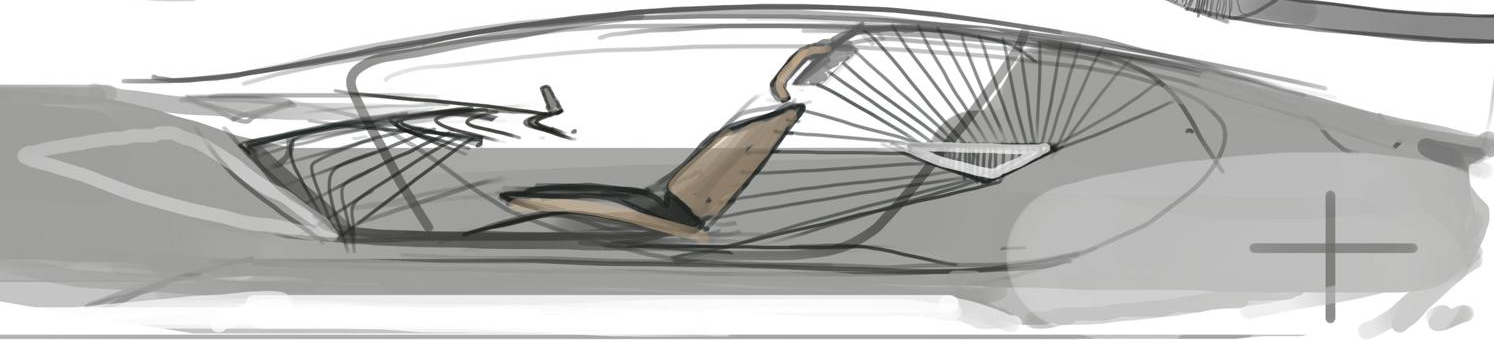
THANKS TO OUR USER STUDY AS WE DERIVED **TWO KEYWORDS**  
AROUND HIS STRONGEST CHARACTER WHICH WAS ILLUSIVE



DESIGN



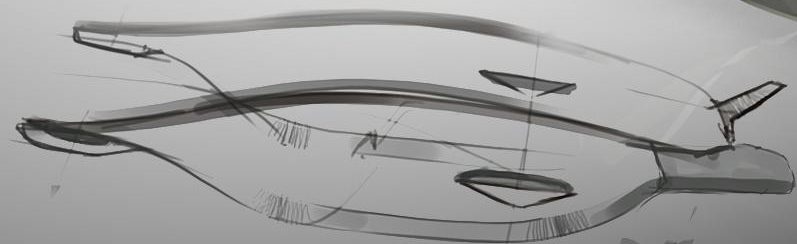
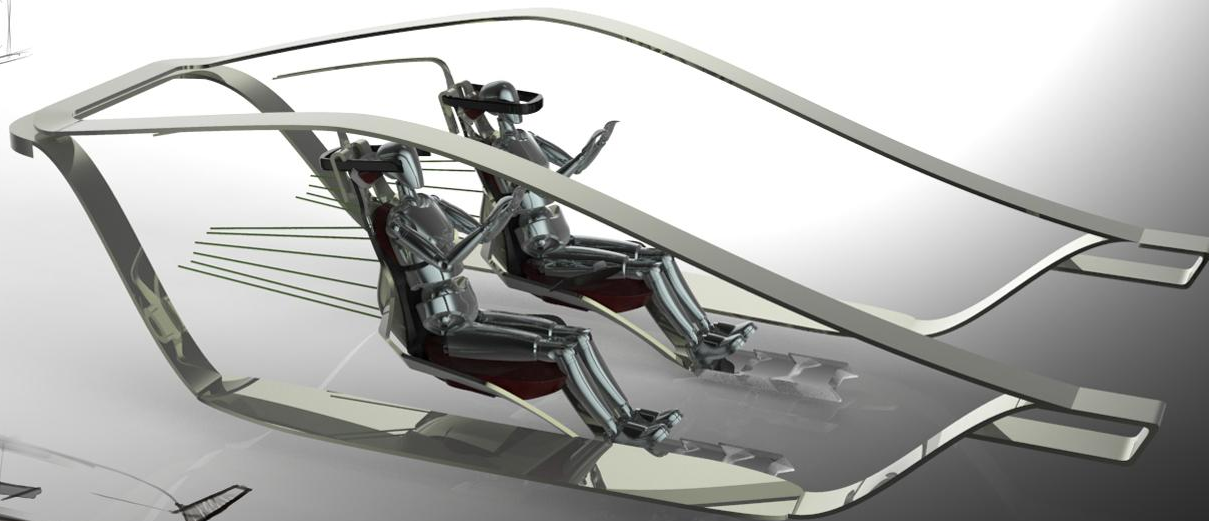
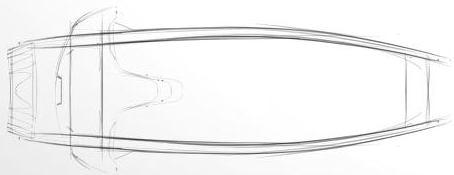
Electrically growing  
Frame (Elastic)



# MODELLING



# MODELLING



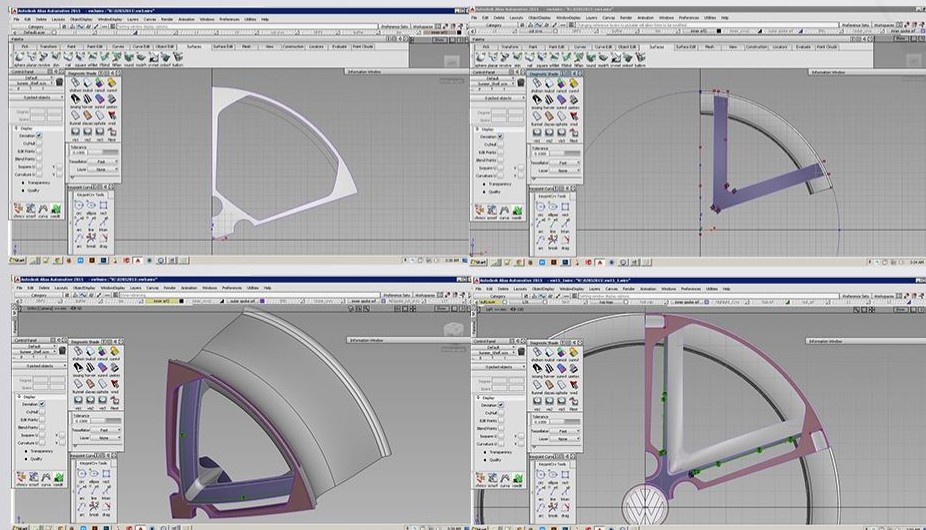
CLASS ASSIGNMENT - VW GOLF R WHEEL

BRIEF- TO MODEL A PRODUCTION CAR WHEEL IN ALIAS

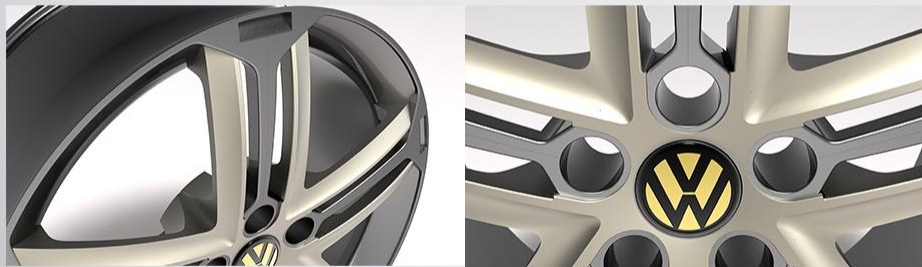


# MODELLING STEPS

## PROCESS



## DETAILS





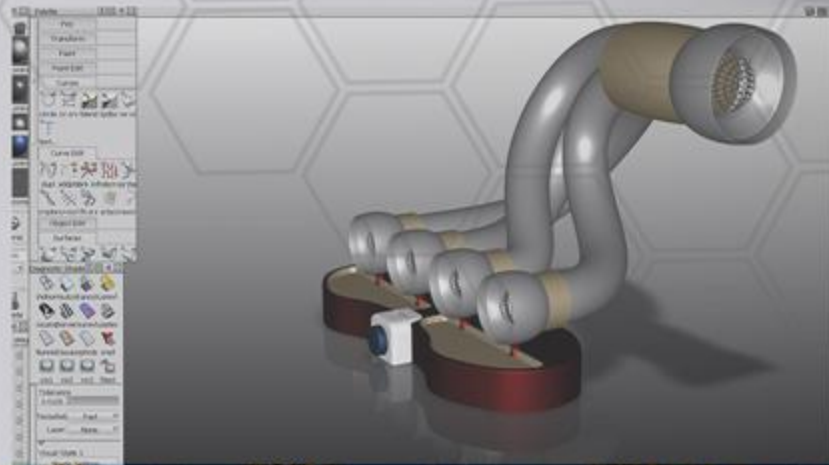
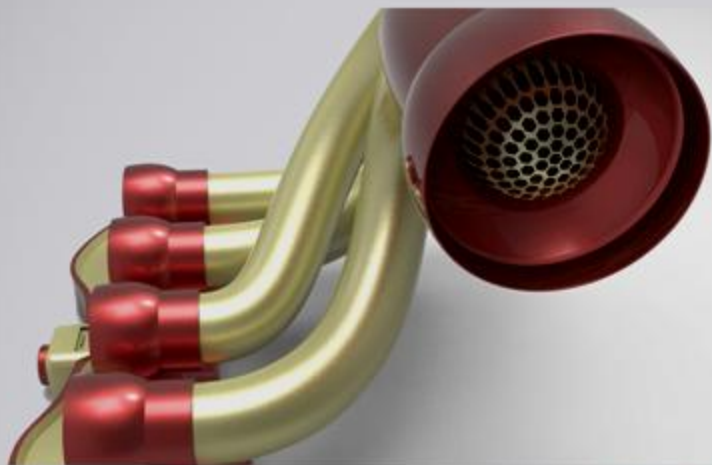


PERSONAL PROJECT - EXHAUST MANIFOLD SPEAKERS



BRIEF-TO MODEL AN AUTOMOTIVE THEMED ACCESSORY IN ALIAS

# DETAILS



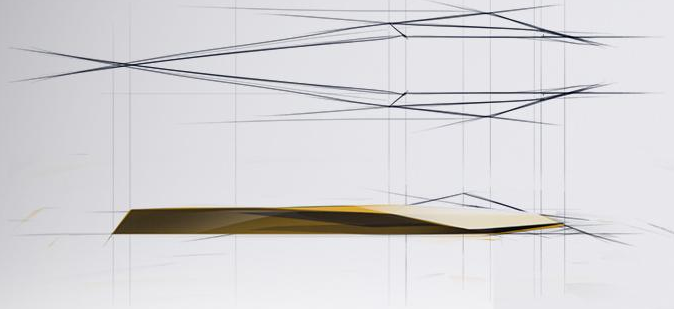


PERSONAL PROJECT - POWERBOAT

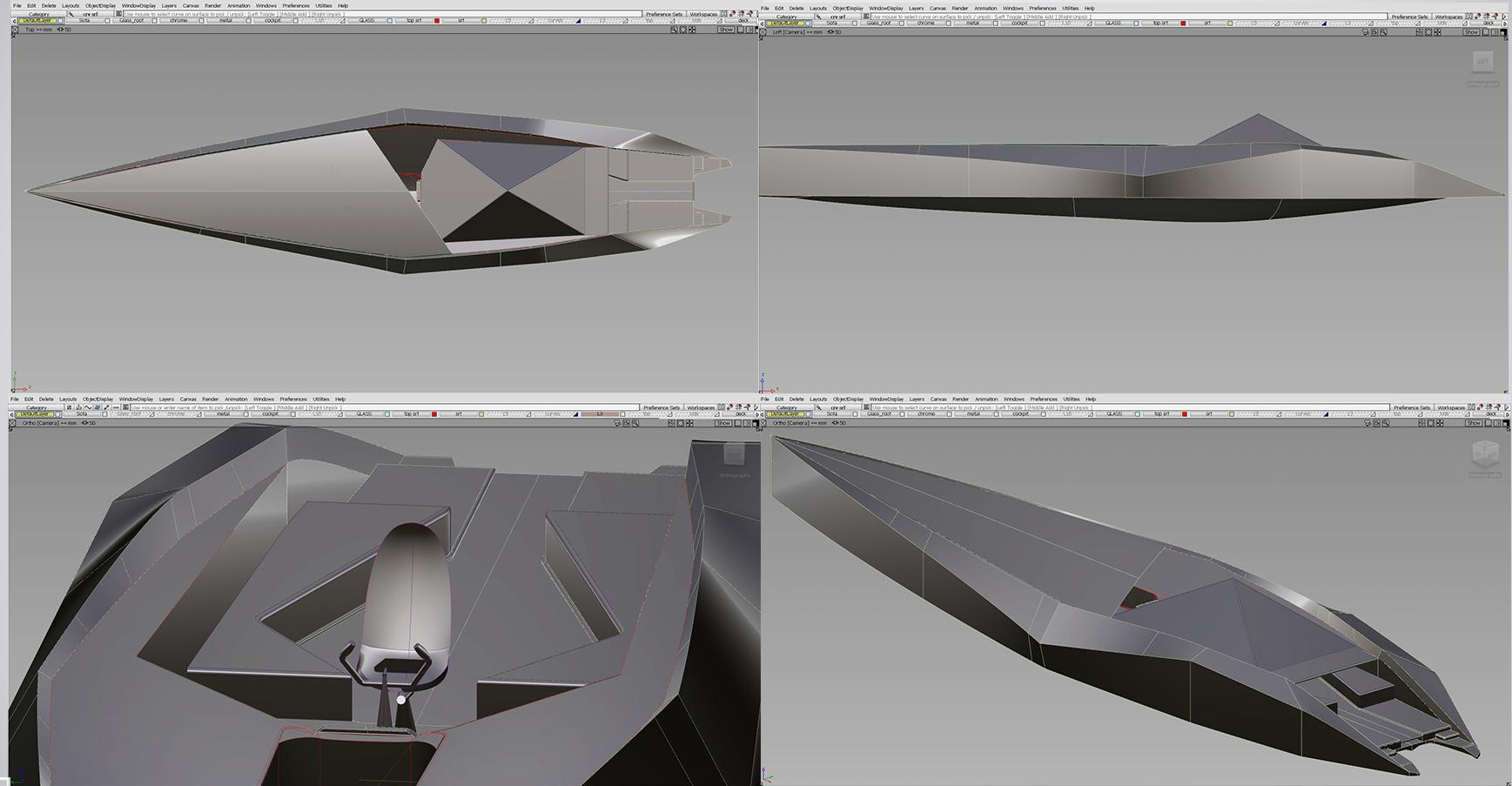
BRIEF - TO DESIGN A POWERBOAT FOR AN AFFLUENT COUPLE

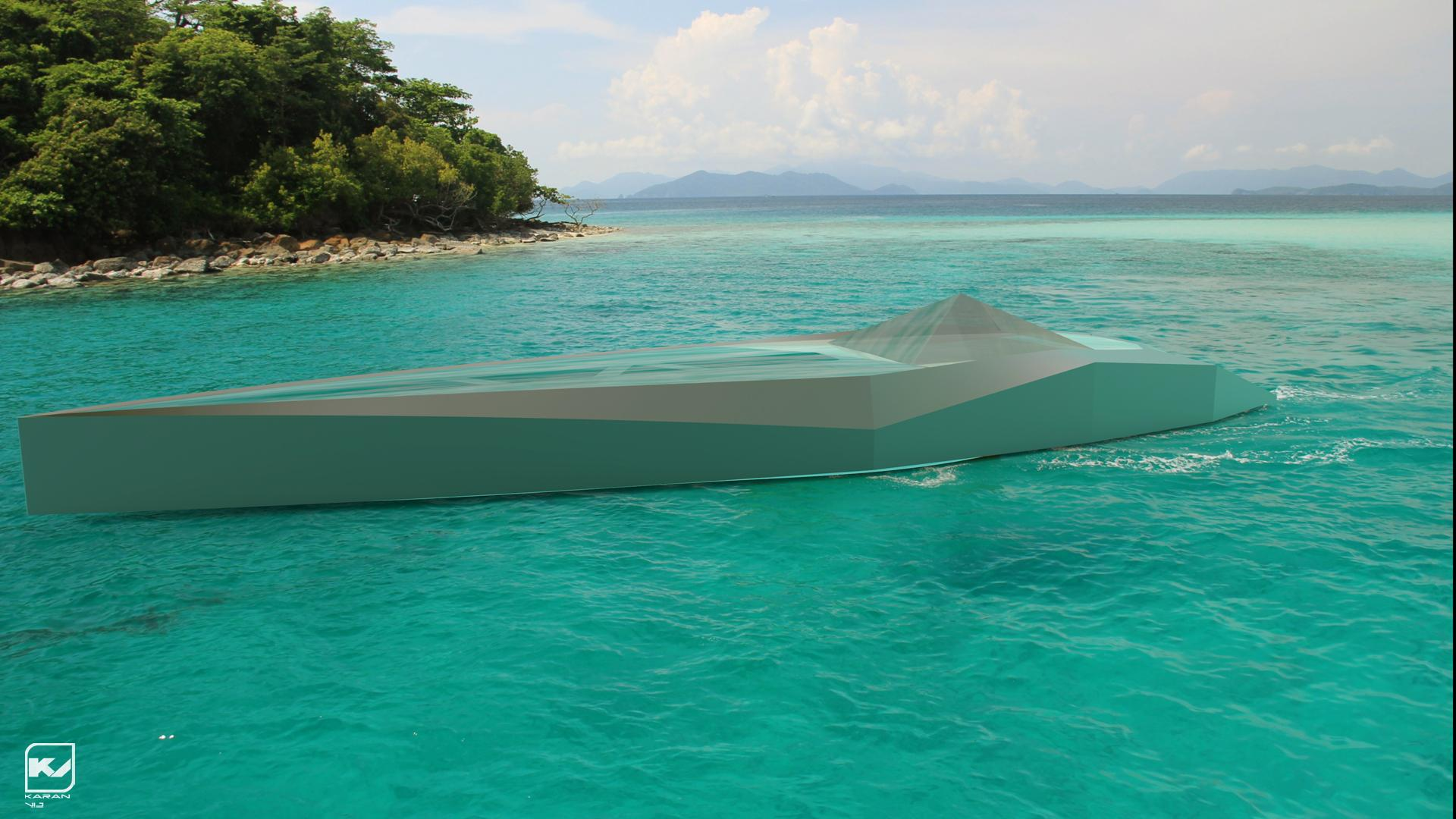


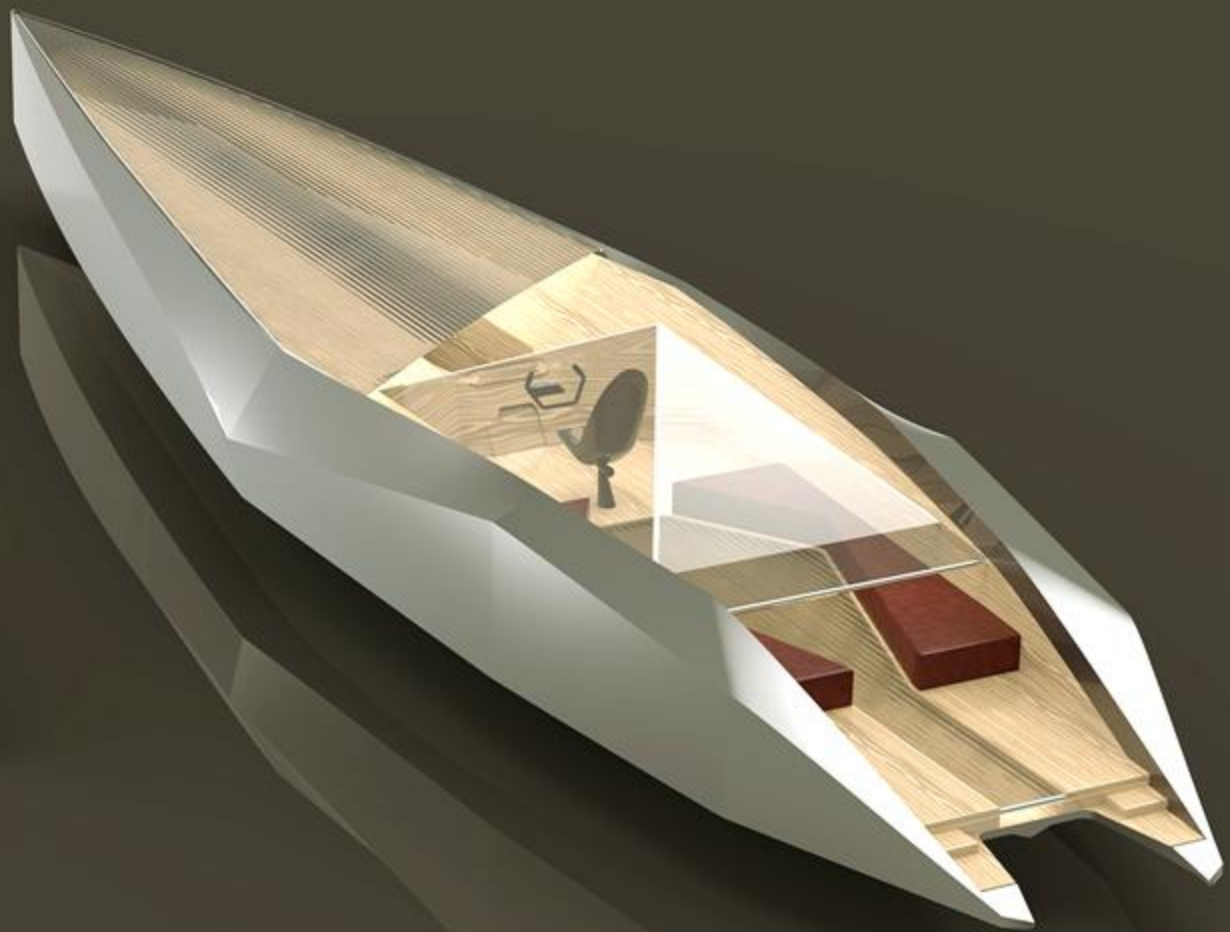
SKETCHES

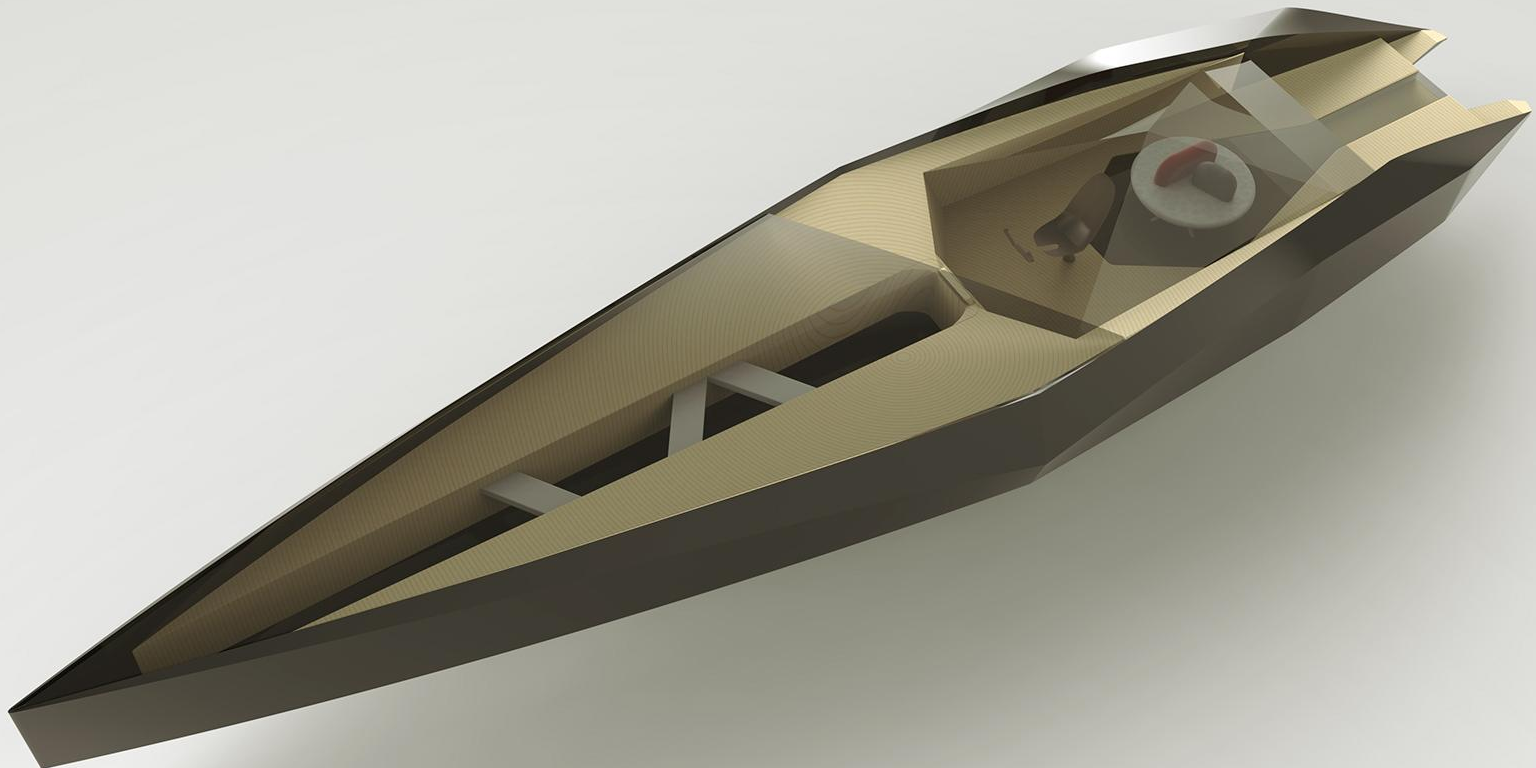


# MODELLING









# CLASS PROJECT - PRODUCTION VEHICLE RENDER



**BRIEF** - TO RENDER A PRODUCTION VEHICLE IN V-RAY(MAYA)

VRAY RENDER WITH POST PRODUCTION



# KEYSHOT RENDERS





















THANK YOU

