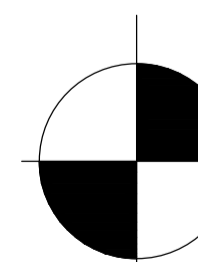
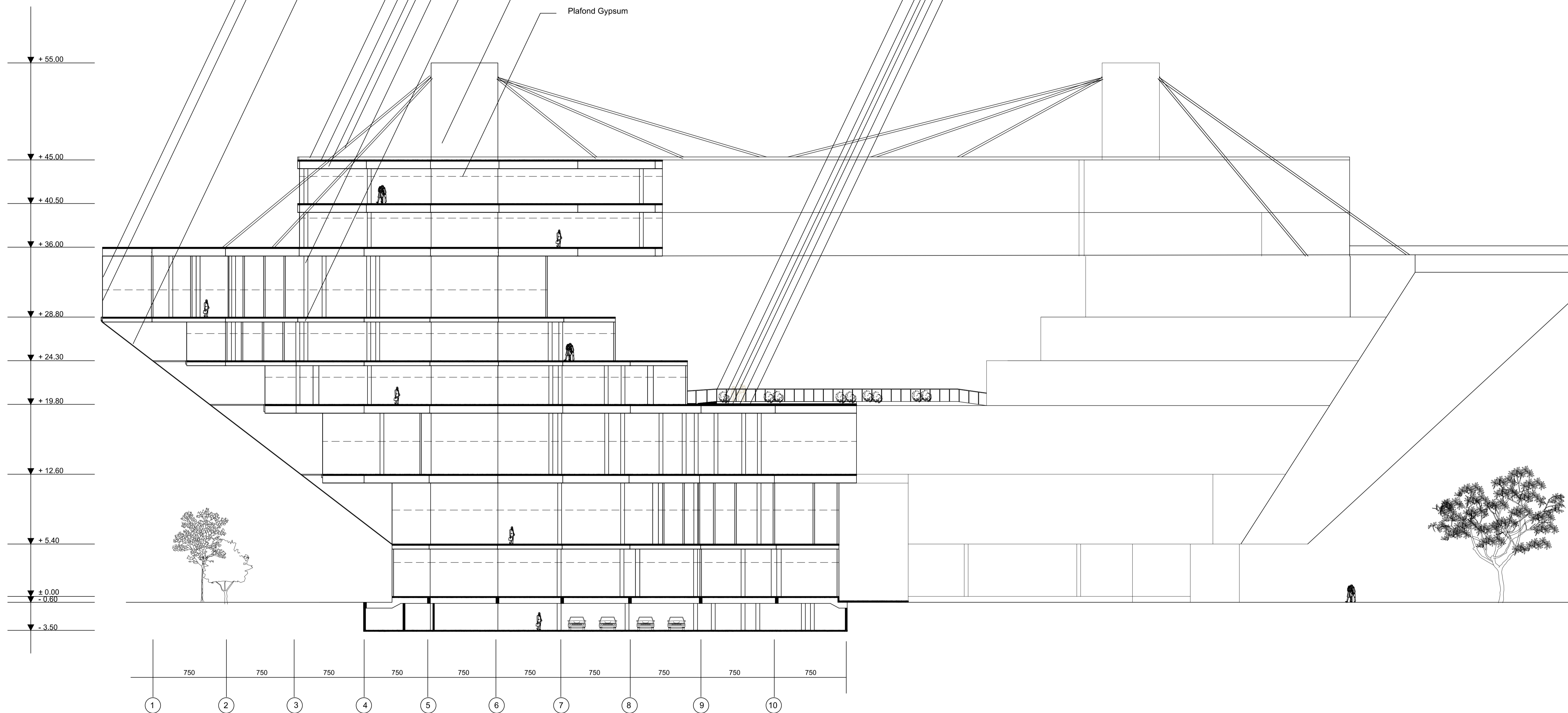


- Rangka Aluminium
- Kaca 12 mm
- Aluminium perforated
- Dak Beton
- Plat Lantai 12 cm
- Balok Baja WF 80/40
- Kabel Baja
- Kolom Beton D=40
- Balok Baja WF 40/20
- Core Struktural
- Plafond Gypsum

- Railing Besi d = 3 cm
- Lapisan Tanah
- Lapisan Filter
- Lapisan Drainase
- Lapisan Waterproofing
- Plat Lantai 15 cm



Potongan I - I
1:200



FAKULTAS TEKNIK
JURUSAN ARSITEKTUR
UNIVERSITAS TARUMANAGARA

STUDIO PERANCANGAN
ARSITEKTUR
V

**HOUSING AND COMMUNITY
CENTER FOR ELDERLY**

DOSEN :
SUWARDANA WINATA , S.T , M.ARCH

NAMA :
KELVIN FERNANDO K

PEMBIMBING :
ALVIN HADIWONO , S.T

NIM :
315120012