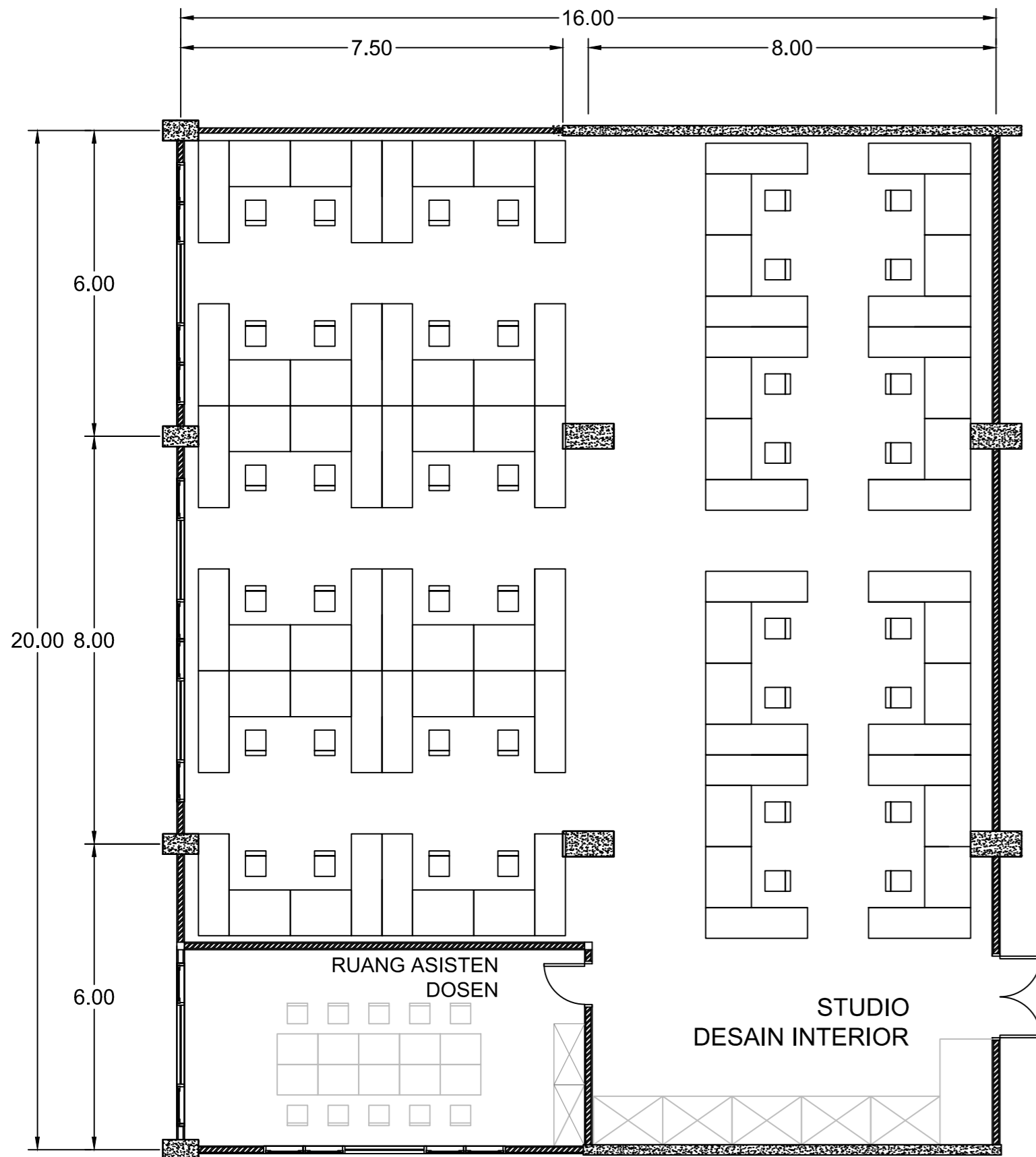
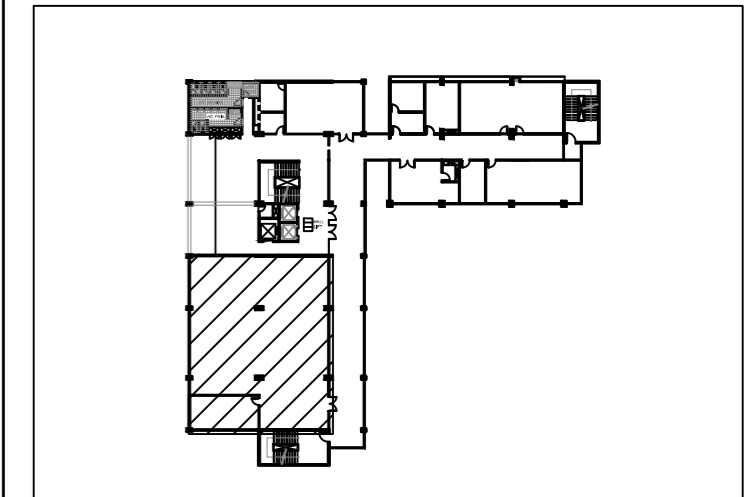


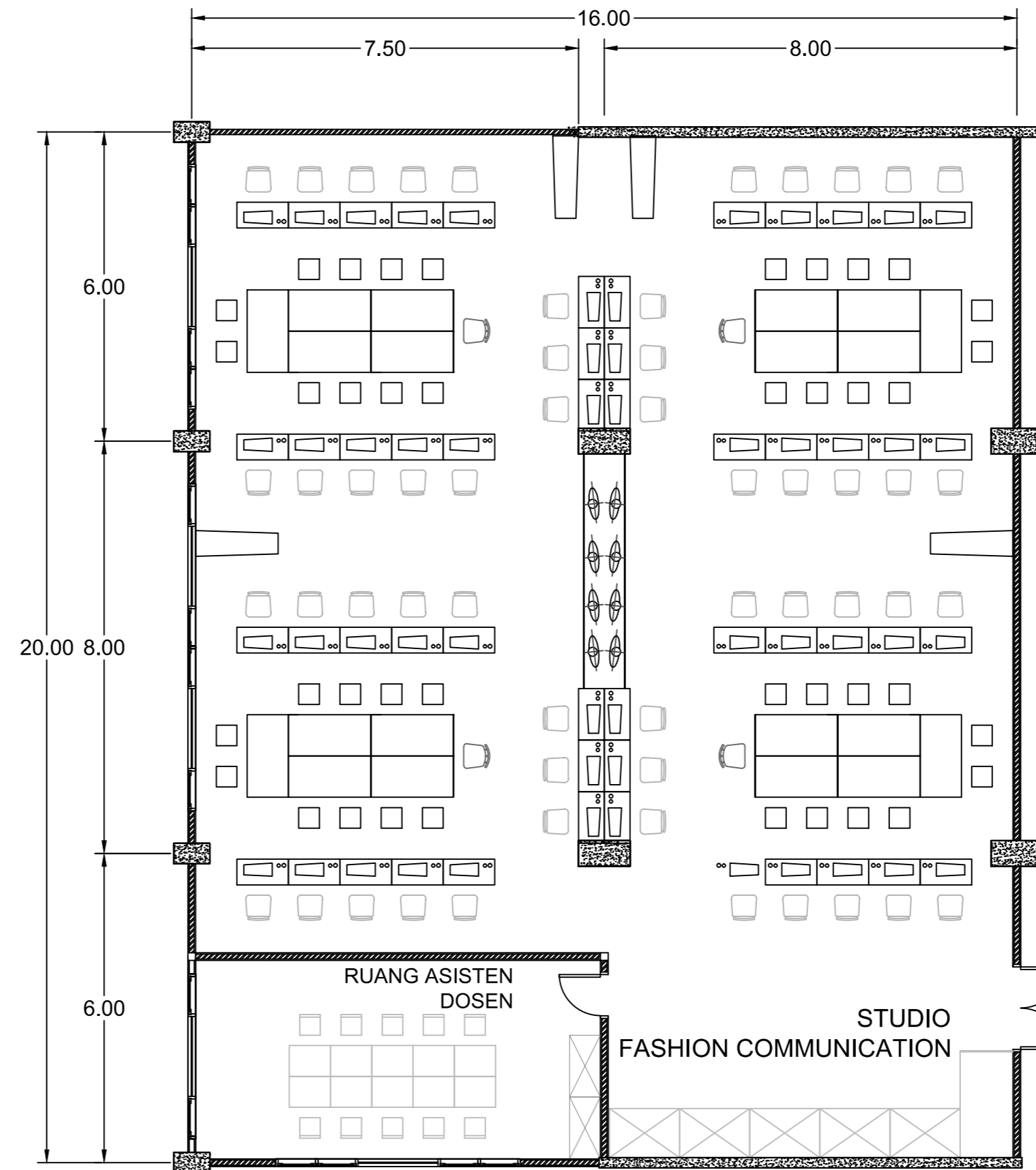
# SEKOLAH TINGGI DESAIN BANDUNG

LOCATION : JL. K.H. HASAN MUSTOFA  
 SITE AREA : 5.216 M<sup>2</sup>  
 BCR : 30-50% (1564 -2608 M<sup>2</sup>)  
 FAR : 2 (10432 M<sup>2</sup>)

## DENAH KUNCI



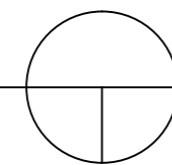
**DENAH STUDIO  
DESAIN INTERIOR**



**DENAH STUDIO  
DESAIN FASHION COMMUNICATION**

## DENAH UNIT STUDIO

SKALA 1 : 100



## MATERIAL PLAFOND

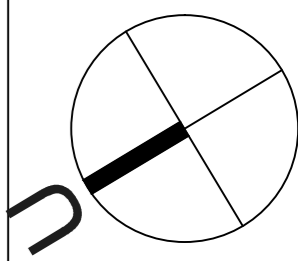
- P1 12MM PAPAN GYPSUM PUTIH 'KALSI'
- P2 10MM PAPAN GYPSUM TAHAN LEMBAB
- P3 13 MM PAPAN GYPSUM TAHAN API
- P4 12MM PAPAN GYPSUM AKUSTIK
- P5 BETON TANPA FINISHING
- P6 PARQUET

## MATERIAL DINDING

- D1 DINDING BATA
- D2 DINDING BATA + PANEL AKUSTIK
- D3 10MM KACA TEMPERED
- D4 PERFORATED PANEL
- D5 DINDING BATA EKSPOSE
- D6 DINDING BETON

## MATERIAL LANTAI

- L1 LAPISAN SEMEN + FLOOR HARDENER
- L2 LANTAI BETON TANPA FINISHING
- L3 30 X 30 CM LANTAI KERAMIK
- L4 40 X 40 CM LANTAI KERAMIK
- L5 60 x 60 CM LANTAI KERAMIK
- L6 PAVING BLOCK



UNIVERSITAS KATOLIK  
**PARAHYANGAN**  
FAKULTAS TEKNIK JURUSAN ARSITEKTUR

SAA - XXXVI  
STUDIO AKHIR ARSITEKTUR  
TAR-407  
SEMESTER GENAP 2013/2014

JUDUL PROYEK :  
**SEKOLAH TINGGI DESAIN**

GAMBAR :  
DENAH  
SKALA :  
1 : 100

NAMA :  
**DANIEL PANSELA** NPM :  
2010420055  
DOSEN PEMBIMBING : Ir. PAULUS AGUS SUSANTO, MT  
DOSEN PENGUJI 1 : ANINDHITA N. SUNARTIO, ST., MT.  
DOSEN PENGUJI 2 : Dr. HARASTOETI D. HARTONO, MSA  
DOSEN PENGUJI 3 : WULANI ENGGAR SARI ST, MT  
DOSEN PENGUJI 4 : IR. ANDI KUMALA SAKTI, MT

LEGALISASI :  
NOMOR LEMBAR :  
JUMLAH LEMBAR :