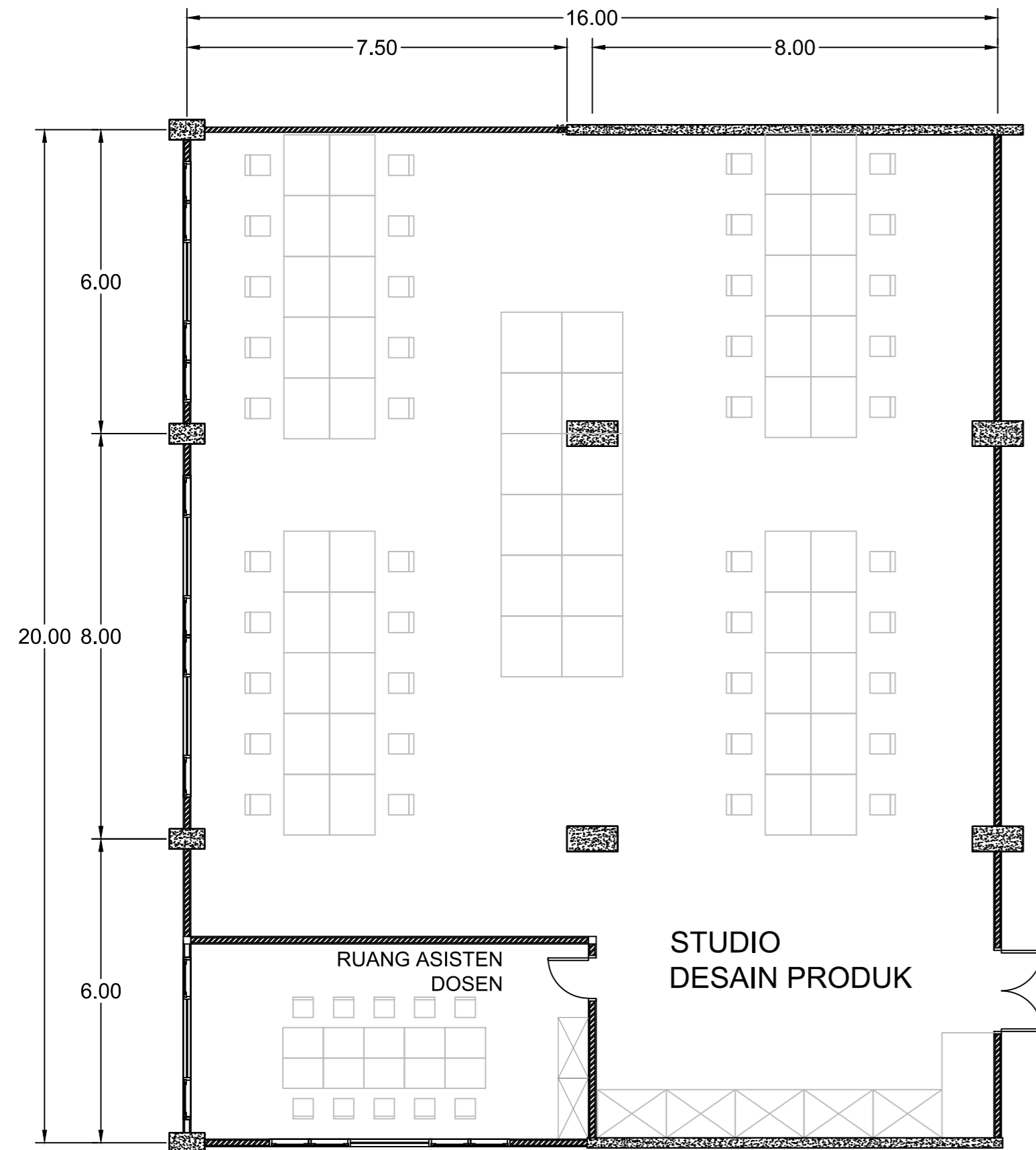
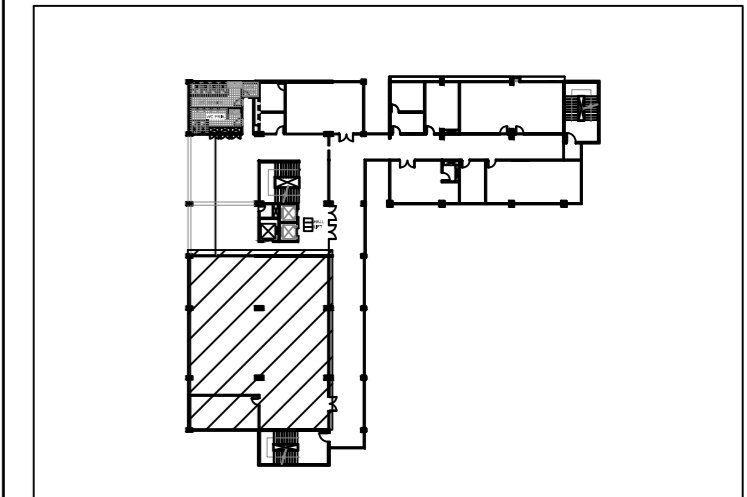


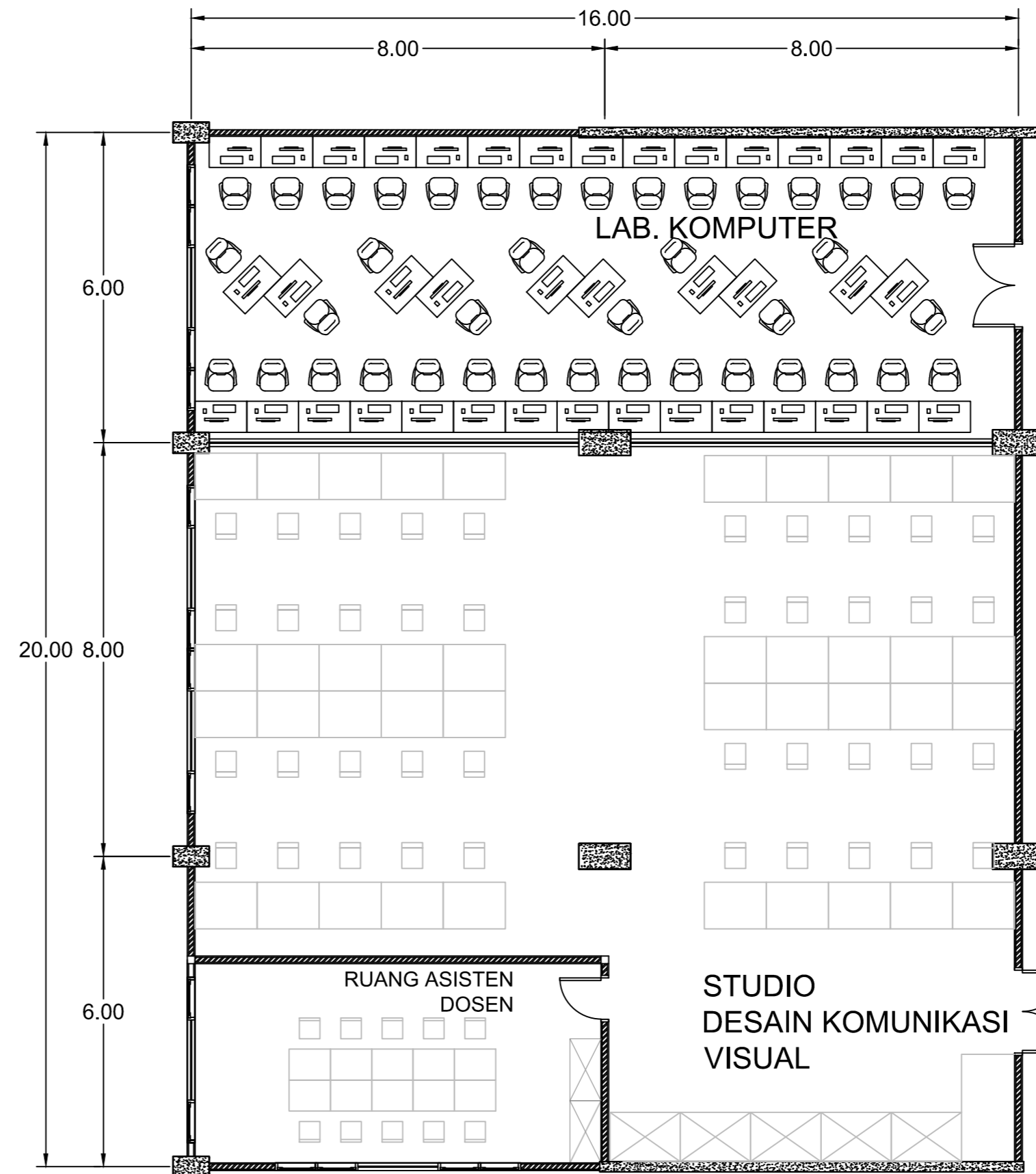
SEKOLAH TINGGI DESAIN BANDUNG

LOCATION : JL. K.H. HASAN MUSTOFA
 SITE AREA : 5.216 M²
 BCR : 30-50% (1564 -2608 M²)
 FAR : 2 (10432 M²)

DENAH KUNCI



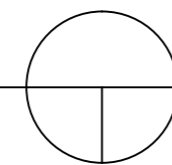
**DENAH STUDIO
DESAIN PRODUK**



**DENAH STUDIO
KOMUNIKASI VISUAL**

DENAH UNIT STUDIO

SKALA 1 : 100



MATERIAL PLAFOND

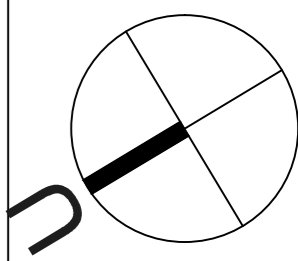
- P1 12MM PAPAN GYPSUM PUTIH 'KALSI'
- P2 10MM PAPAN GYPSUM TAHAN LEMBAB
- P3 13 MM PAPAN GYPSUM TAHAN API
- P4 12MM PAPAN GYPSUM AKUSTIK
- P5 BETON TANPA FINISHING
- P6 PARQUET

MATERIAL DINDING

- D1 DINDING BATA
- D2 DINDING BATA + PANEL AKUSTIK
- D3 10MM KACA TEMPERED
- D4 PERFORATED PANEL
- D5 DINDING BATA EKSPOSE
- D6 DINDING BETON

MATERIAL LANTAI

- L1 LAPISAN SEMEN + FLOOR HARDENER
- L2 LANTAI BETON TANPA FINISHING
- L3 30 X 30 CM LANTAI KERAMIK
- L4 40 X 40 CM LANTAI KERAMIK
- L5 60 x 60 CM LANTAI KERAMIK
- L6 PAVING BLOCK



UNIVERSITAS KATOLIK
PARAHYANGAN
FAKULTAS TEKNIK JURUSAN ARSITEKTUR

SAA - XXXVI
STUDIO AKHIR ARSITEKTUR
TAR-407
SEMESTER GENAP 2013/2014

JUDUL PROYEK :
SEKOLAH TINGGI DESAIN

GAMBAR :
DENAH
SKALA :
1 : 100

NAMA :
DANIEL PANSELA
NPM :
2010420055
DOSEN PEMBIMBING : Ir. PAULUS AGUS SUSANTO, MT
DOSEN PENGUJI 1 : ANINDHITA N. SUNARTIO, ST., MT.
DOSEN PENGUJI 2 : Dr. HARASTOETI D. HARTONO, MSA
DOSEN PENGUJI 3 : WULANI ENGGAR SARI ST, MT
DOSEN PENGUJI 4 : IR. ANDI KUMALA SAKTI, MT

LEGALISASI :
NOMOR LEMBAR :
JUMLAH LEMBAR :