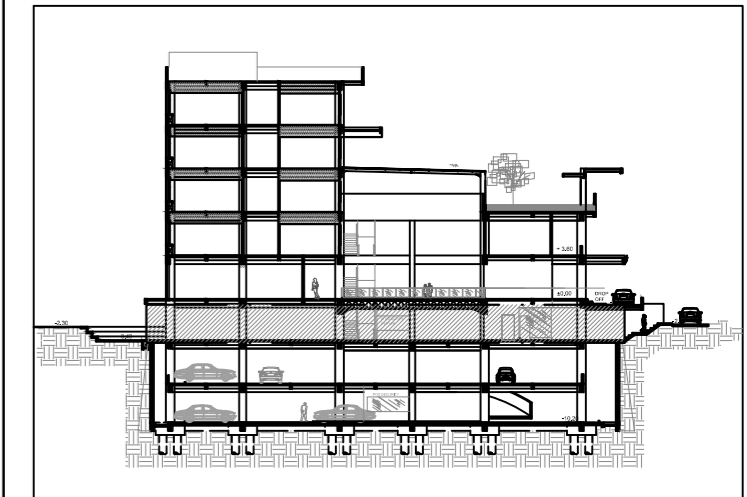


SEKOLAH TINGGI DESAIN BANDUNG

LOCATION : JL. K.H. HASAN MUSTOFA
 SITE AREA : 5.216 M²
 BCR : 30-50% (1564 -2608 M²)
 FAR : 2 (10432 M²)

POTONGAN KUNCI



MATERIAL FINISHING

MATERIAL PLAFOND

- P1 12MM PAPAN GYPSUM PUTIH 'KALSI'
- P2 10MM PAPAN GYPSUM TAHAN LEMBAB
- P3 13 MM PAPAN GYPSUM TAHAN API
- P4 12MM PAPAN GYPSUM AKUSTIK
- P5 BETON TANPA FINISHING
- P6 PARQUET

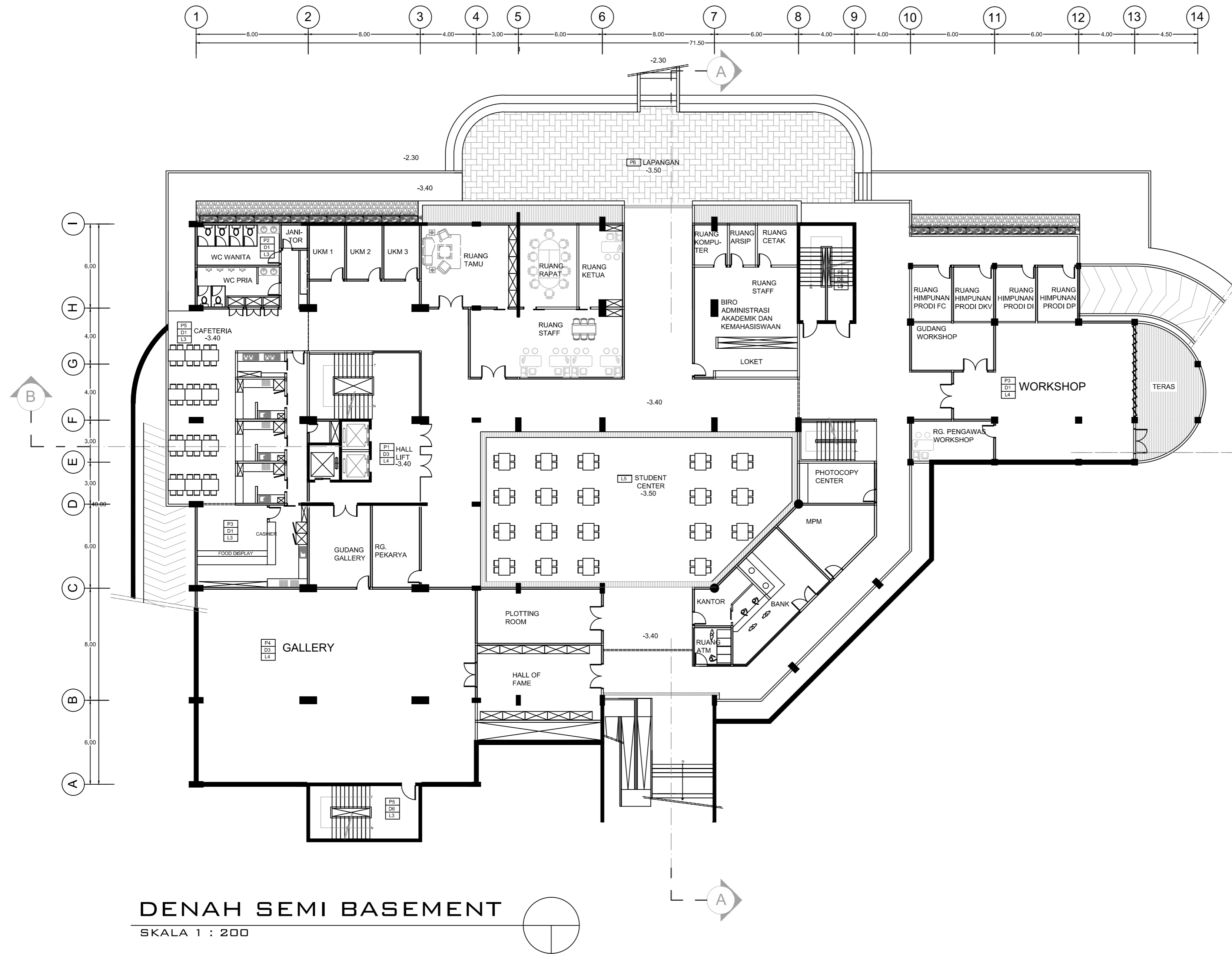
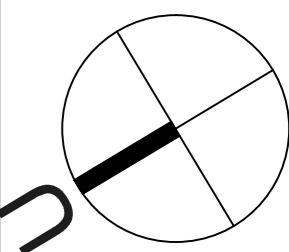
MATERIAL DINDING

- D1 DINDING BATA
- D2 DINDING BATA + PANEL AKUSTIK
- D3 10MM KACA TEMPERED
- D4 PERFORATED PANEL
- D5 DINDING BATA EKSPOSE
- D6 DINDING BETON

MATERIAL LANTAI

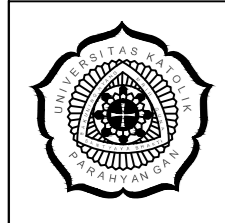
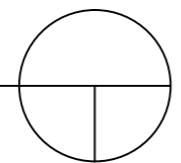
- L1 LAPISAN SEMEN + FLOOR HARDENER
- L2 LANTAI BETON TANPA FINISHING
- L3 30 X 30 CM LANTAI KERAMIK
- L4 40 X 40 CM LANTAI KERAMIK
- L5 60 x 60 CM LANTAI KERAMIK
- L6 PAVING BLOCK

GROSS AREA : 1215 m²
 CIRCULATION :
 EFFECTIVE AREA:



DENAH SEMI BASEMENT

SKALA 1 : 200



UNIVERSITAS KATOLIK
PARAHYANGAN
 FAKULTAS TEKNIK JURUSAN ARSITEKTUR

SAA - XXXVI
 STUDIO AKHIR ARSITEKTUR
 TAR-407
 SEMESTER GENAP 2013/2014

JUDUL PROYEK :
SEKOLAH TINGGI DESAIN

GAMBAR :
 DENAH
 SKALA :
 1 : 200

NAMA :
DANIEL PANSELA
 NPM :
 2010420055
 DOSEN PEMBIMBING : Ir. PAULLUS AGUS SUSANTO, MT
 DOSEN PENGUJI 1 : ANINDHITA N. SUNARTIO, ST., MT.
 DOSEN PENGUJI 2 : Dr. HARASTOETI D. HARTONO, MSA

LEGALISASI :
 NOMOR LEMBAR :
 JUMLAH LEMBAR :