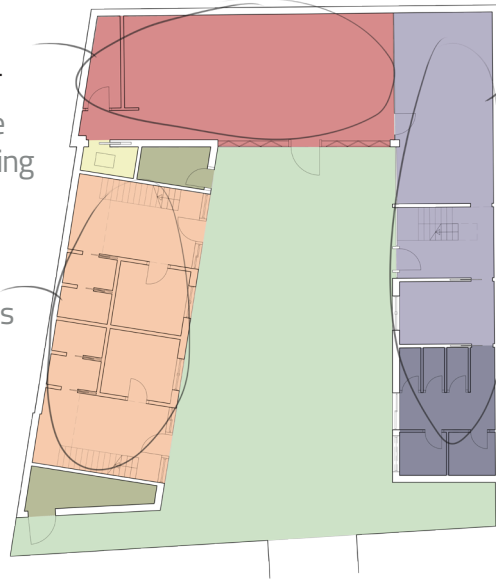


**THE KITCHEN,  
THE HOUSE'S HEART**  
it's in the center of the  
building, communicating  
with the courtyard

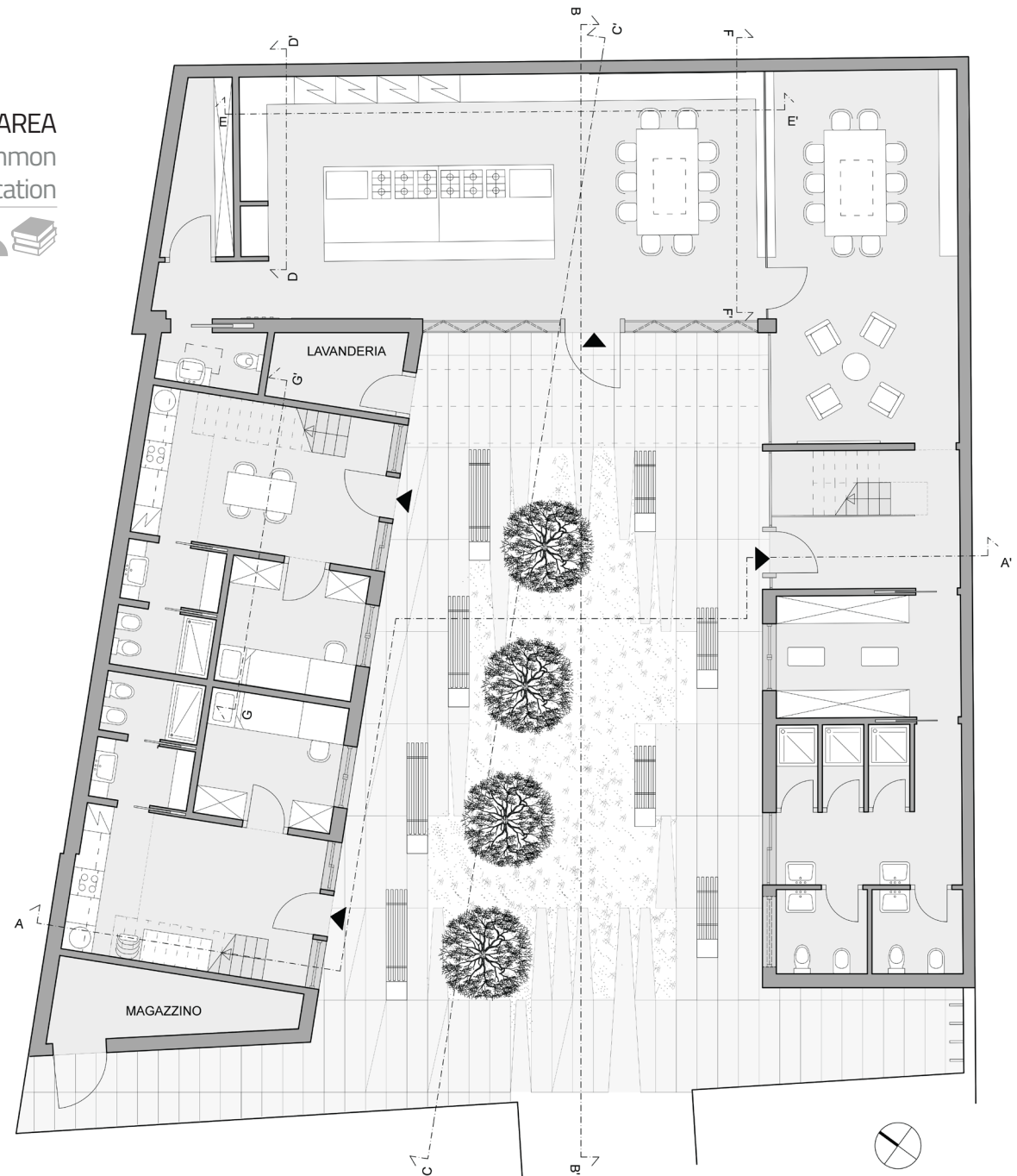
**WORKERS AREA**  
private accomodations  
2 people per flat



**STUDENTS AREA**  
a total common  
location



- Courtyard
- Kitchen
- Service areas
- Guests' bathroom
- Students' common area
- Students' shared bathroom
- Workers' accomodation



GROUND FLOOR PLAN

