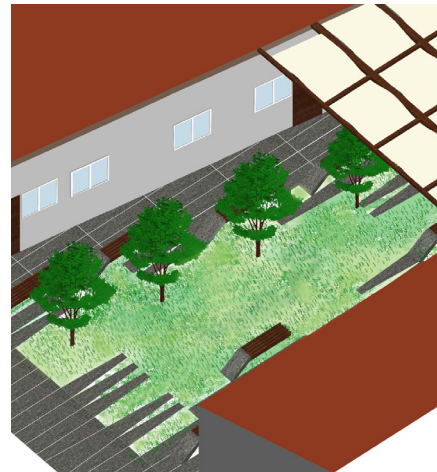
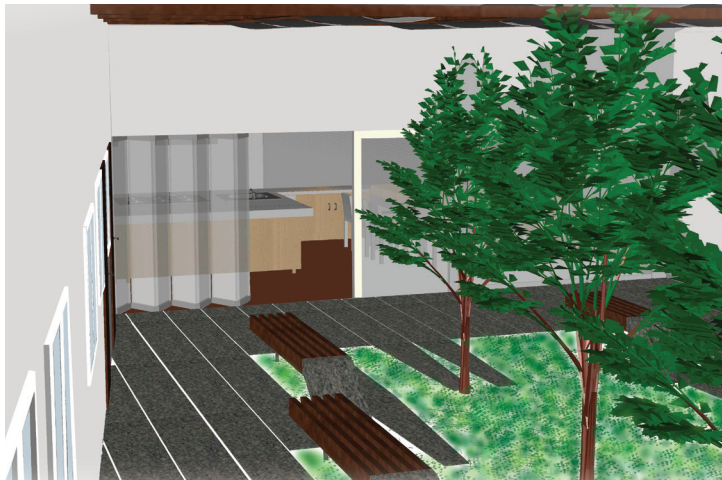
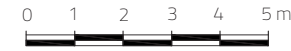


BB'

## THE COURTYARD

It has been designed using as a reference Diller + Scofidio's project: the Highline in New York. It consists of an urban requalification: an old subway line, abandoned in 1980, has been redesigned to become a peaceful and pleasant public park. It is an elevated green area so you can also have a great view on the city. I recalled the benches' and pavement's movement, which invites visitors to walk through the garden and enter the house. This space is another melting pot for the residents.



## REFERENCE

Diller Scofidio + Renfro / Highline

