

# Portfolio

## **NIRMAL KUMAR.A** **PRODUCT DESIGNER**

### **CONTACT:**

email: nirmalkumar023@gmail.com

Ph no: +91 9840147702



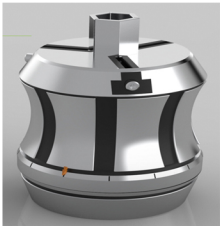
### **EDUCATION:**

1. Diploma in Tool n Die making
2. B.Tech Mechanical
3. P.G in Product Designing

### **SOFTWARE SKILLS:**

Alias, Cre-o, Keyshot, Solidworks  
Photoshop, Illustrator, Sketch book.

## **WHAT I'VE DONE WITH MY LIFE SO FAR**



3 Tool in 1 = Quick Tool



## QUICK TOOL

Combination of {Allen key + sockets + ring spanners}  
Adjustable tool tips ranging from 4mm to 24mm  
Tip outer hexagon as allen key and inner as socket  
Tool tips can be replaced if worn-out  
Design inspired from drill chuck  
Working mechanism from lathe chuck

## Market study

Product						
Description						
1. Product name	steel hexagon spanner	universal wrench	adjustable spanner	socket wrench	schrodinger multi tool	wrenchit
2. Product size	15,3×4,8 cm	12×6×1 inch	200×50×14 mm	255×50×14 mm	90×40×25 mm	13,4×2,3 cm
3. Material	steel	alloy steel	iron-nickel alloy	stainless steel	hardened cast steel	stainless steel
4. Colour	silver	silver	silver metallic	silver	nickel & black	silver
5. Tools range	8 to 17 mm	9 to 42 mm	max 24 mm	12-19/8-21/10-22 mm 8 in 1 socket	2 to 6mm allen key 6&8 socket	6 to 13 mm bits

## Product design specification - QUICK TOOL

1. Product name Quick tool
2. Product size Dia 26 mm×45mm height
3. Material Body - steel  
Tool tip - hardened cast steel
4. Colour Silver
5. Tool range 4mm to 24 mm allen key size  
2mm to 22 mm socket size

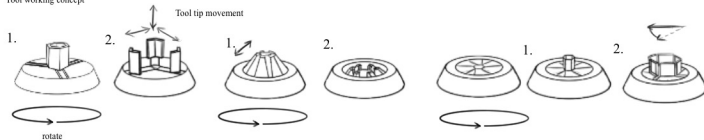
working mechanism  
inspired from lathe chuck



design insiprtion  
from drill chuck

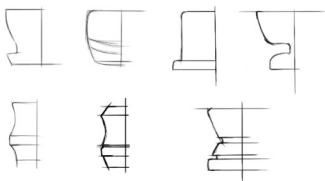


# Tool working concept

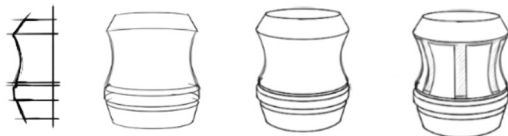


1. minimum tool size in closed condition
2. maximum tool size in fully opened condition

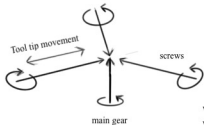
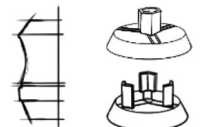
## Body design concept



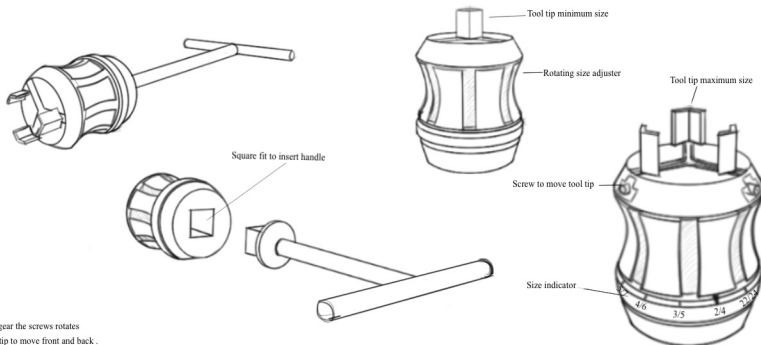
## concept detailing



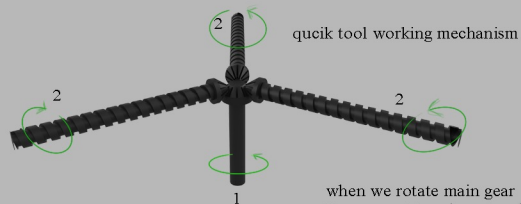
## final concept



when we rotate the main gear the screws rotates which will make the tool tip to move front and back .

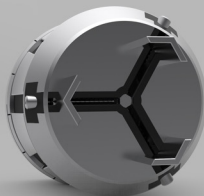




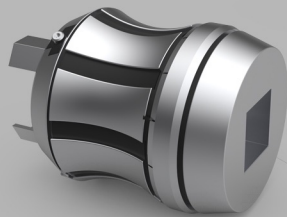


when we rotate main gear the 3 screw rotates simultaneously leading the tool tip to adjust front and back .

1. main gear
2. adjusting screws



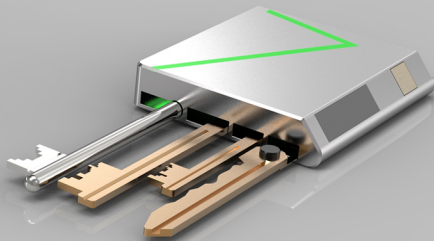
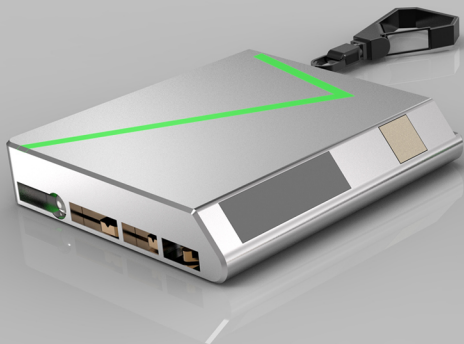
replacable tool tips when wore out



Handle & gun holder slot



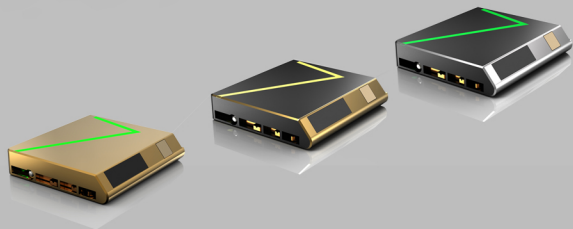
Air gun, T-handle, L--handle can be used in quick tool



## key finder and holder

That early-morning scramble to find your keys before you leave the home doesn't have to be so frantic if you've got a key finder and holder that connects with smartphone or tablet via bluetooth. You then locate your item via the free app on your smartphone and GPS..

key finder has four key slot where you can insert your personal keys which can be opened via finger print access. key finder and holder has led lights fitted in side and top faces and 90LB audible alert noise which helps user to locate in darkness. key finder and holder is attach with 2-way finder button to locate your smartphone and tablet while missing.



# Data collection

## user study



## mood board

### 1. stress



### 2. Depression



### 3. Time waste



### 4. Tension



## market study

Brands						
Features						
BRAND NAME	Tile mate	Trackr bravo	Chipolo plus	Duet protag	Nut	Pally smart finder
RANGE (ON AVERAGE)	68 feet	70 feet	66 feet	70 feet	65 feet	93 feet
BATTERY TYPE	Nonreplaceable battery	Replaceable CR2016 battery	Nonreplaceable battery	Replaceable CR2016 battery	Replaceable CR2016 battery	AAAA battery
COMPATIBILITY	Android, iOS	Android, iOS	Android, iOS	Android, iOS	Android, iOS	Android, iOS
GEOFENCE FEATURE	Yes	Yes	Yes	Yes	No	Yes
AUDIBLE ALERT NOISE	88 dB	85 dB	90 dB	75 dB	75 dB	115 dB
GPS NAVIGATION & TRACKER	2-way tracking	2-way tracking	2-way tracking	2-way tracking	2-way tracking	1-way tracking
DIMENSION	1.3x1.3x0.2 inches	Dia 1.2x0.14 inches	Dia 1.5x0.23 inches	1.1x1.1x0.2 inches	1.4x1.4x0.22 inches	1.5x0.9x0.52 inches
LED LIGHT	No	Yes	No	No	No	No

## Bench marked product

### Tile mate

### specification



weight

6.1g

size

34344.65 mm

sound

88 decibel melody

charging

none

keyring hole

yes

Technology

bluetooth LE

Battery

Nonreplaceable

Compatibility

iOS, Android

Water resistance

up to IP5 standards

# Quality functional deployment

POSITIVE
 

NEGATIVE
 



Good
 

Fair
 

Poor
 

# product design specification

1. Brand name  
 2. Range (on average)  
 3. Battery type  
 4. Compatibility  
 5. Geofence feature  
 6. Audible aleart noise  
 7. GPS Navigation & tracker  
 8. Led light  
 9. Finger print access  
 10. Key holding  
 11. Material  
 12. Colour  
 13. Dimension  
 14. Buttons  
 15. Packaging
- Key finder and holder  
 70 feet  
 Replaceable CR2016 battery  
 Android, iOS  
 Yes  
 90 db  
 2-way tracking  
 Yes  
 Upto 10 person  
 Upto 4 different keys  
 Steel  
 Silver, gold & black  
 55×40×10 mm  
 Key release button, 2-way finder button  
 56×41×10.5mm cardboard box  
 With 0.6mm thick.

## Theme board

zippo lighter



## Design characters

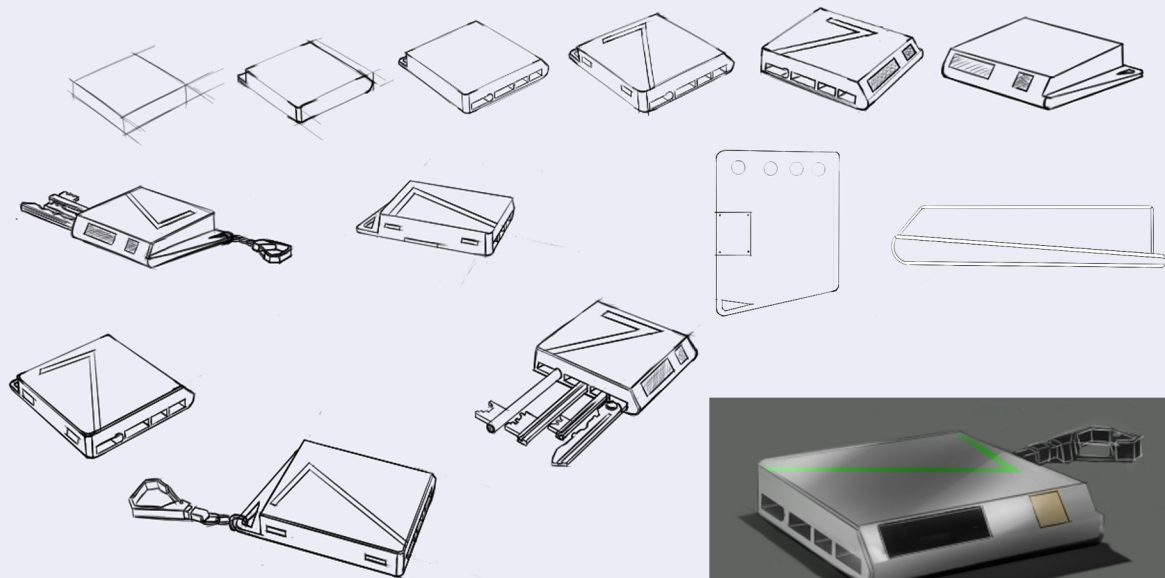
- Square in shape
- Steel material
- Silver colour
- Ruggedness look
- Edge radius

spartan war shield

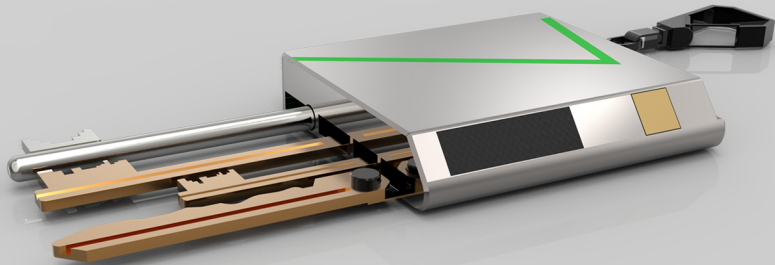


Shield shape is for led lights

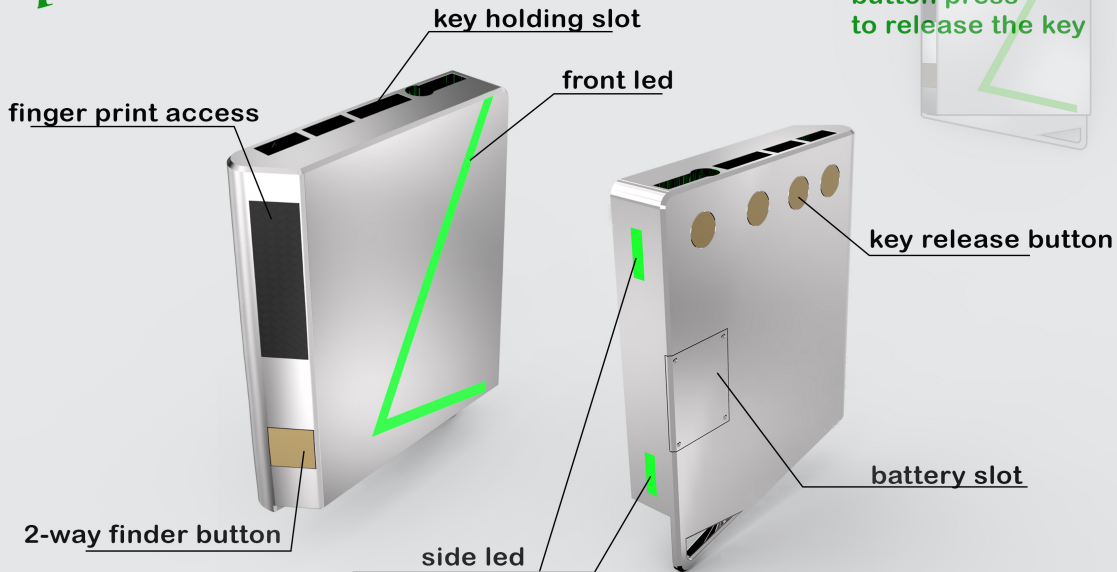
# Sketches(Sketch book),Rendering (Photoshop)



# Rendering (Key shot)



# parts

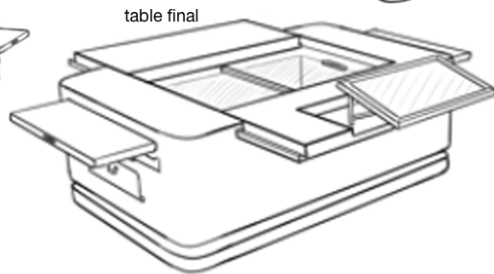
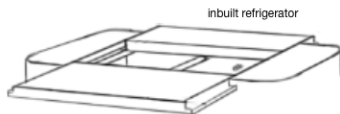
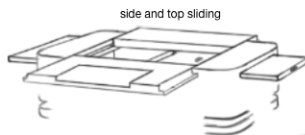
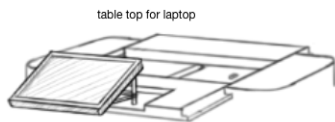
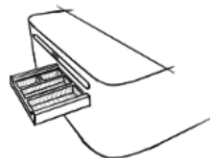
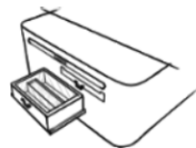
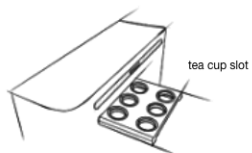
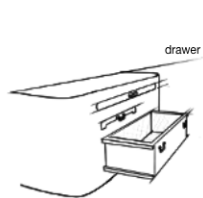


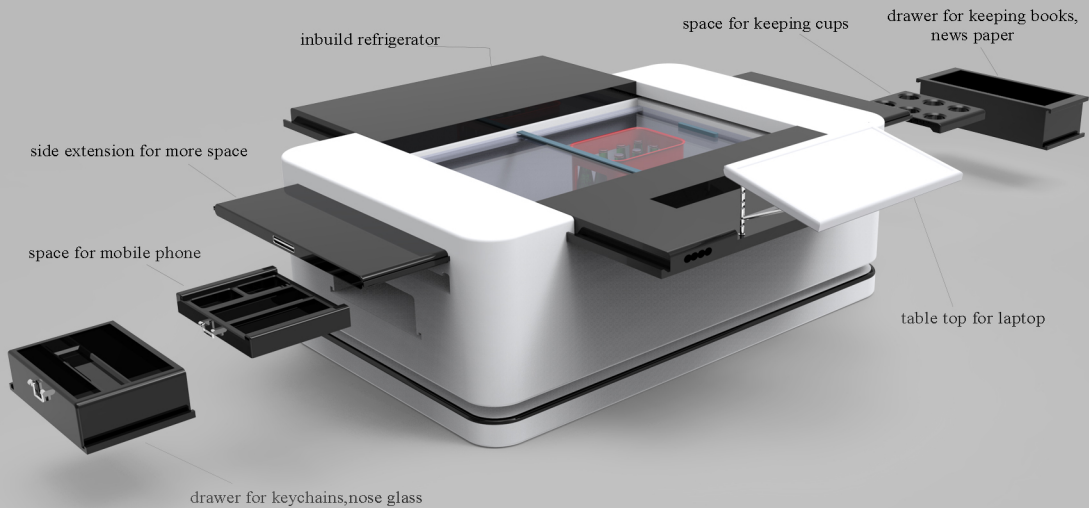


## multi-centre table

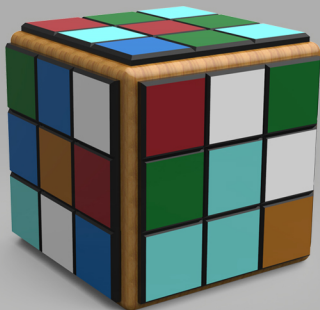
Table with inbuild refrigerator  
Top four side extension  
Storage space for keeping stuffs like  
(news paper, books, key chains, mobile phone)











## Beech Resort Table

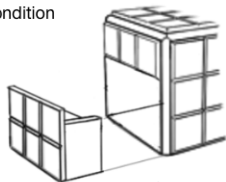
Table concept is taken from rubix cube  
Chairs can be folded into the cube  
Umbrella or led light can be attached  
Table top is extended for more space  
This is a convertible space saving resort table

beech resort table

closed condition



chair concept



led for night dinner

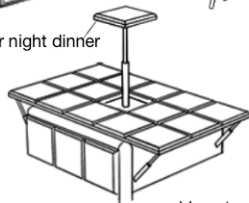
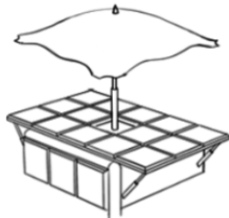
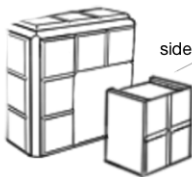


table fully opened

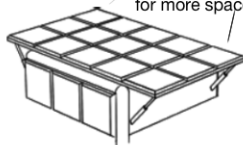


side chair

with umbrella



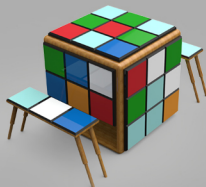
side extendable top  
for more space



Fully closed table



with detachable chairs



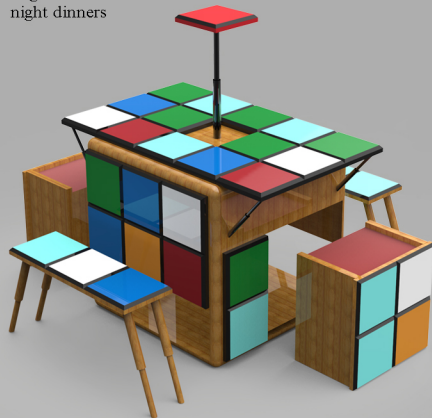
with side chairs



Top extendable for more space



Led lights attached for  
night dinners



umbrella attached for  
outdoor beeach view



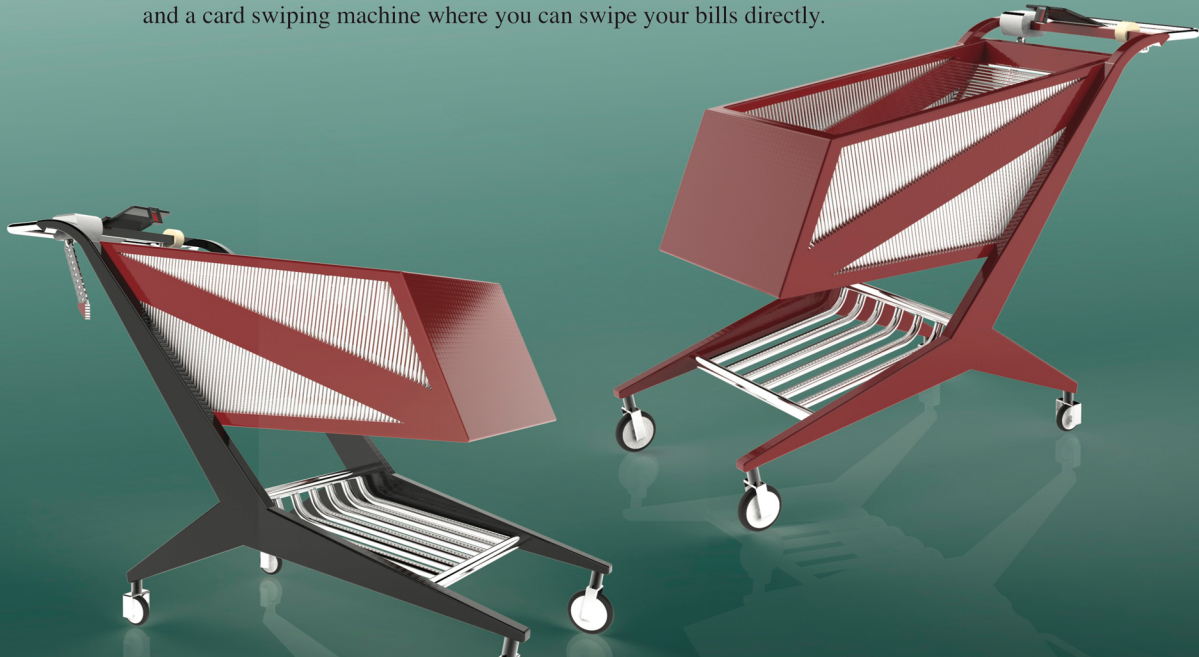






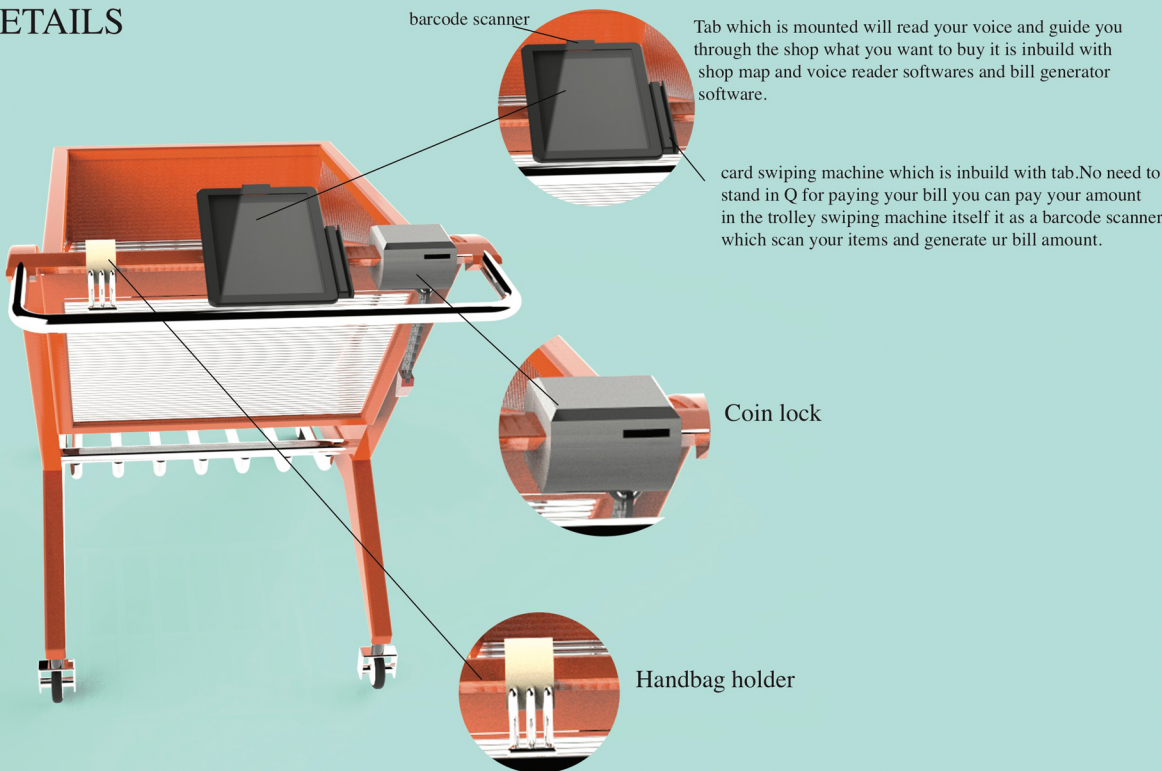
# smart trolley

1. Trolley is designed in a way to feel the robustness in the line flows
2. The tab which is fitted in the trolley will guide you through the shop to easily pick your needs
3. No need to stand in the que for billing. Trolley is inbuild with a barcode scanner and a card swiping machine where you can swipe your bills directly.



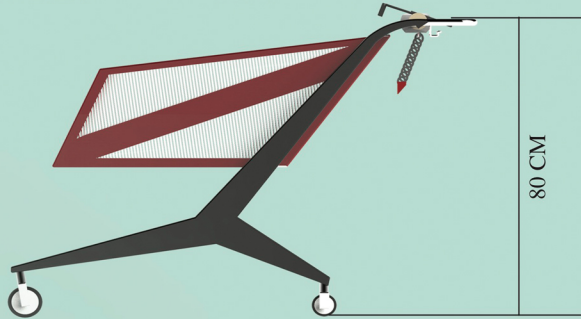


# DETAILS

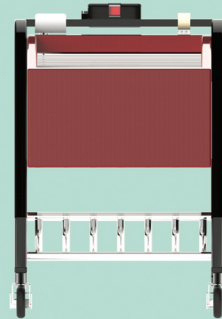


# views

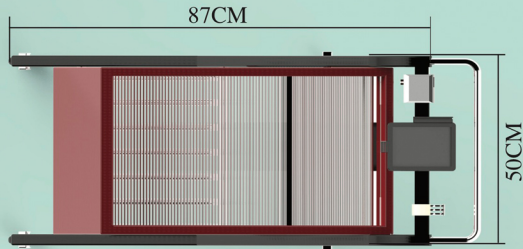
SIDE



FRONT



TOP



BACK

