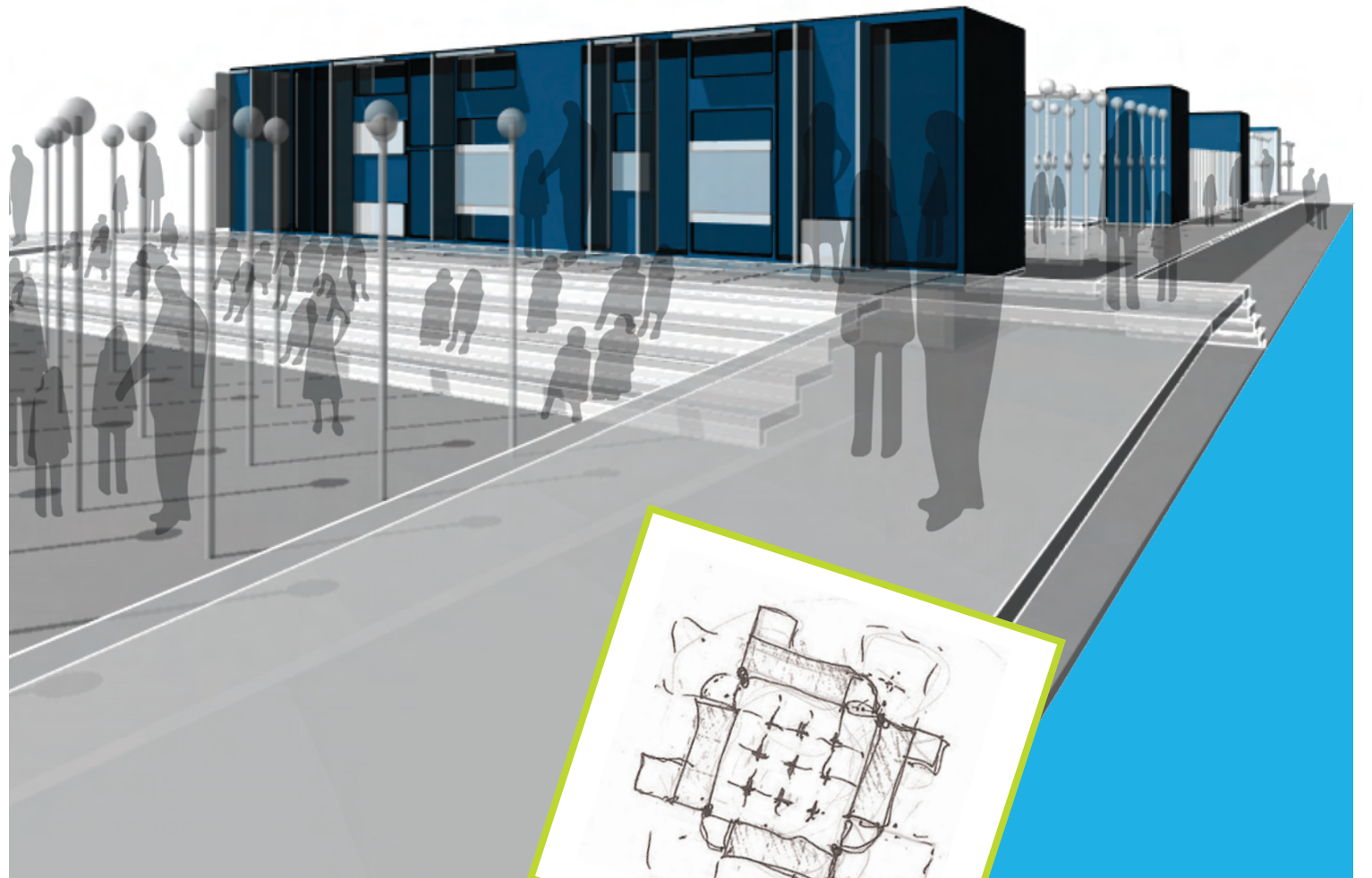


mobile modular



In order to demarcate fields with these characteristics and as a distribution of unique values in space, a grid was adopted as a spatial organization. Such a system allows for simple installation and striking, while the architecture itself becomes a field.

During the Planning Grant the architectural character of the project developed through uniting our definition of field, our field principles, and our ambitions of reaching our target audience through the use of environmental metaphors and a full-body, kinesthetic experience. An outdoor exhibit architecture based on modularity and mobility emerged by bringing together: 1) the grid organization system; 2) the metaphors of sound and wind fields as a bridge to the more complex physics of electromagnetism; and 3) the commitment to reach audiences beyond the walls and geographic reach of existing science museums.

Once the decision was made to be both **mobile and modular**, the project team invited Resolution: 4 Architecture (RES4) to be the project architects. Their apt combination of experience and innovation with modular, prefabricated form makes them an ideal fit for Phoebe's Field.