

KEY  SURGICAL  
INCORPORATED



**2006**  
Product Catalog



AN ISO 13485 CERTIFIED COMPANY

**OUR MISSION STATEMENT**

Key Surgical, Inc., as a manufacturer and distributor of medical products, is committed to:

- 1) Maintaining a compliant and effective Quality Management System
- 2) Recognizing the needs of surgical and Central Processing professionals
- 3) Meeting customer needs with superior service and excellent product quality.

**Table of Contents**

Key Surgical Products Page
Vascular Loops, Booties and Silicone Clamp Covers . . . . . 1
K-Wires and Steinmann Pins . . . . . 2
K-Wire Dispensers . . . . . 3
Wire and Pin Cutters/Pliers . . . . . 4
General Instruments . . . . . 5
"Time Out" Visual . . . . . 5
Protect-A-Caps . . . . . 6-7
Twin Caps and Specialty Caps . . . . . 8
Face Shields . . . . . 9
Locking Tags . . . . . 10
Repair Tags and Utility Scissors . . . . . 11
Hand Immobilizers/Lint Remover/Bundling Straps . . . . . 12
Instrument Marking Tape . . . . . 13-15
Cleaning Brushes . . . . . 16-21
Instrument Trays . . . . . 22-23
Instrument Stringers/AutoClave Mitts . . . . . 24
Towel/Utility Clamps . . . . . 25
Co-Flex . . . . . 26

ACCOUNT NO. \_\_\_\_\_

# Loops, Booties and Clamp Covers

## Key® Vascular Loops CE 0123

- Silicone loops are used to occlude, retract and identify veins, arteries, nerves and tendons during surgical procedures.
- Oval shape to distribute pressure and minimize trauma
- Radiopaque
- Packaged sterile
- 18" long
- Latex free

Loops: 2/Pkg; 10 Pkgs/Box

VL-201 . . . . . Red Mini	VL-205 . . . . . Red Maxi
VL-202 . . . . . Blue Mini	VL-206 . . . . . Blue Maxi
VL-203 . . . . . Yellow Mini	VL-207 . . . . . Yellow Maxi
VL-204 . . . . . White Mini	VL-208 . . . . . White Maxi
	VL-214 . . . . . Blue Super Maxi

## Key® Vascular Booties CE 0123

- Soft instrument jaw covers that gently grip and tag delicate suture material
- Radiopaque
- Packaged sterile
- Latex free

Booties: 5 Pair/Pad; 1 Pad/Pkg; 5 Pkg/Box

VB-1115 . . . . . Yellow . . . . . Standard size  
Sold per Box

## Key® Silicone Clamp Covers CE 0123

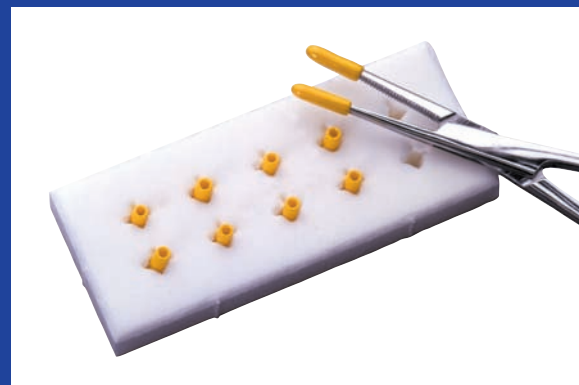
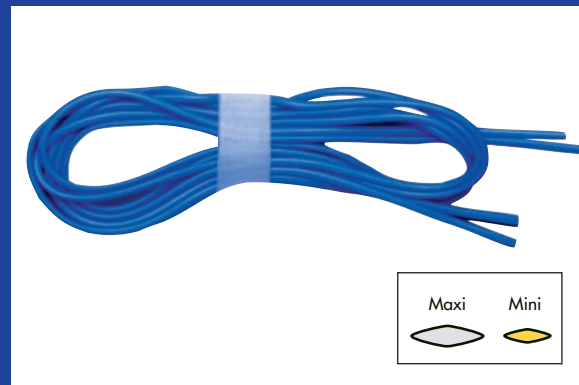
- Silicone instrument covers reduce trauma while providing a positive grip
- Radiopaque
- Available sterile or non-sterile
- Latex free

### STERILE

Item #	Color	Size	
VS-101	Red	1/10" x 5"	. . . . 2 Covers/pkg. . . 10 pkgs/box
VS-102	White	2/10" x 5"	. . . . 2 Covers/pkg . . 10 pkgs/box
VS-103	Blue	3/10" x 5"	. . . . 2 Covers/pkg. . . 10 pkgs/box

### NON-STERILE

Item #	Color	Size	
VS-201	Red	1/10" x 5"	. . . . 20 Covers/pkg
VS-202	White	2/10" x 5"	. . . . 20 Covers/pkg
VS-203	Blue	3/10" x 5"	. . . . 20 Covers/pkg



# K-Wires and Steinmann Pins

## K-Wires

### Double Trocar

mm	4"	5"	6"	9"	12"
0.7	KI-71-100	KI-71-105	KI-71-021	-	-
0.9	KI-71-101	KI-71-106	KI-71-022	KI-71-111	KI-71-121
1.1	KI-71-102	KI-71-107	KI-71-023	KI-71-112	KI-71-122
1.4	KI-71-104	KI-71-108	KI-71-024	KI-71-114	KI-71-124
1.6	KI-71-103	KI-71-109	KI-71-025	KI-71-113	KI-71-123

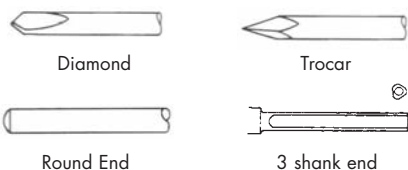
### Single Trocar with round end

mm	4"	5"	6"	9"	12"
0.7	KI-71-130	KI-71-170	KI-71-176	-	-
0.9	KI-71-131	KI-71-171	KI-71-177	KI-71-151	KI-71-161
1.1	KI-71-132	KI-71-172	KI-71-182	KI-71-152	KI-71-162
1.4	KI-71-133	KI-71-174	KI-71-184	KI-71-154	KI-71-164
1.6	KI-71-134	KI-71-175	KI-71-185	KI-71-153	KI-71-163

### Double Diamond

mm	4"	5"	6"	9"
0.7	KI-71-200	KI-71-205	KI-71-030	-
0.9	KI-71-201	KI-71-206	KI-71-031	KI-71-211
1.1	KI-71-202	KI-71-207	KI-71-032	KI-71-212
1.4	KI-71-203	KI-71-208	KI-71-034	KI-71-214
1.6	KI-71-204	KI-71-209	KI-71-033	KI-71-213

All 1.6mm K-Wires can be threaded. Made from certified implantable steel and precision ground in Germany, ends gently tapered to an exact point.



## Steinmann Pins

### Smooth Pins, 9"

mm	Double Trocar	Single Trocar round end	Single Trocar 3 shank end
2.0	KI-71-450	KI-71-510	KI-71-480
2.4	KI-71-453	KI-71-513	KI-71-483
2.8	KI-71-456	KI-71-516	KI-71-486
3.2	KI-71-459	KI-71-519	KI-71-489
3.5	KI-71-462	KI-71-522	KI-71-492
4.0	KI-71-465	KI-71-525	KI-71-495
4.5	KI-71-468	KI-71-528	KI-71-498

mm	Double Diamond	Single Diamond round end	Single Diamond 3 shank end
2.0	KI-71-600	KI-71-660	KI-71-630
2.4	KI-71-603	KI-71-663	KI-71-633
2.8	KI-71-606	KI-71-666	KI-71-636
3.2	KI-71-609	KI-71-669	KI-71-639
3.5	KI-71-612	KI-71-672	KI-71-642
4.0	KI-71-615	KI-71-675	KI-71-645
4.5	KI-71-618	KI-71-678	KI-71-648

### Threaded Pins, 9"

mm	Double Trocar	Single Trocar	Double Diamond	Single Diamond
2.0	KI-71-750	KI-71-770	KI-71-730	KI-71-700
2.4	KI-71-753	KI-71-773	KI-71-733	KI-71-703
2.8	KI-71-756	KI-71-776	KI-71-736	KI-71-706
3.2	KI-71-759	KI-71-779	KI-71-739	KI-71-709
3.5	KI-71-762	KI-71-782	KI-71-742	KI-71-712
4.0	KI-71-765	KI-71-785	KI-71-745	KI-71-715
4.5	KI-71-768	KI-71-788	KI-71-748	KI-71-718

## COMPARE OUR PRICES

**\$14.00 PER PACKAGE**  
(6 PER PACKAGE)

KI-71-022	6"	.035"	0.9mm
KI-71-023	6"	.045"	1.1mm
KI-71-025	6"	.062"	1.6mm
KI-71-100	4"	.028"	0.7mm
KI-71-101	4"	.035"	0.9mm
KI-71-102	4"	.045"	1.1mm
KI-71-103	4"	.062"	1.6mm
KI-71-104	4"	.054"	1.4mm
KI-71-111	9"	.035"	0.9mm
KI-71-112	9"	.045"	1.1mm
KI-71-113	9"	.062"	1.6mm
KI-71-133	4"	.054"	1.4mm

### MM TO INCH CONVERSIONS

K-WIRES		STEINMANN PINS	
mm	inch	mm	inch
0.7	.028	2.0	5/64
0.9	.035	2.4	3/32
1.1	.045	2.8	7/64
1.4	.054	3.2	1/8
1.6	.062	3.5	9/64
		4.0	5/32
		4.5	.177

## K-Wire and Pin Guards

- Post-surgical sterile guards cover protruding pin or wire
- Designed to fit each specific pin and wire size
- Packaged sterile

### K-Wire Guards

Size	mm	Item #	Color
.028"	.7	11-1028	Yellow
.035"	.9	11-1035	Blue
.045"	1.1	11-1045	White
.062"	1.6	11-1062	Green



### Steinmann Pin Guards

5/64"	2.0	11-1078	Pink
3/32"	2.4	11-1093	Grey
7/64"	2.8	11-1109	Tan
1/8"	3.2	11-1125	Lavender
9/64"	3.5	11-1141	Brown
5/32"	4.0	11-1156	Navy
3/16"	4.5	11-1188	Orange

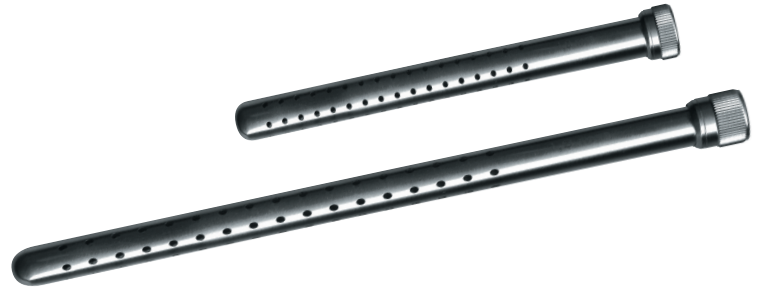
**4 GUARDS PER PACKAGE— 20 PKG. PER BOX**

# K-Wire Dispensers

## Wire Storage, Dispensing and Sterilization

Conveniently dispenses and sterilizes one size of K-Wire

- Dispenses one wire at a time
- Perforated for proper sterilization
- Clearly marked with diameter for quick identification
- To help avoid injury, load wires with blunt end first



### K-Wire Dispenser 6-1/4"

Item #	Length	Diameter	Qty Held
KI-71-001	up to 6"	.028" (0.7mm)	100
KI-71-002	up to 6"	.035" (0.9mm)	50
KI-71-003	up to 6"	.045" (1.1mm)	40
KI-71-004	up to 6"	.054" (1.4mm)	25
KI-71-006	up to 6"	.062" (1.6mm)	20

### K-Wire Dispenser 12-1/4"

Item #	Length	Diameter	Qty Held
KI-71-012	up to 12"	.035" (0.9mm)	50
KI-71-013	up to 12"	.045" (1.1mm)	40
KI-71-014	up to 12"	.054" (1.4mm)	25
KI-71-016	up to 12"	.062" (1.6mm)	20
KI-71-017	up to 12"	5/64" (2.0mm)	10
KI-71-019	up to 12"	3/32" (2.4mm)	5

## Multi Chambered K-Wire Dispensers

- Stores, sterilizes and dispenses four different size wires
- Dial on bottom allows for easy dispensing of one size at a time
- Avoid injury by loading wire with blunt end down first
- Lock dial to avoid accidental dispensing
- Chambers are clearly marked for easy identification



### GERMAN STAINLESS - HIGHEST QUALITY

ITEM #	LENGTH	CHAMBER ONE		CHAMBER TWO		CHAMBER THREE		CHAMBER FOUR	
		DIAMETER	QTY HELD	DIAMETER	QTY HELD	DIAMETER	QTY HELD	DIAMETER	QTY HELD
KI-46-542	4"	.035" (0.9mm)	18	.045" (1.1mm)	24	.054" (1.4mm)	24	.062" (1.6mm)	12
KI-46-538	12"	.035" (0.9mm)	30	.045" (1.1mm)	30	.054" (1.4mm)	24	.062" (1.6mm)	12
KI-46-539	12"	.070" (1.8mm)	18	5/64" (2.0mm)	12	.086" (2.2mm)	12	3/32" (2.4mm)	6

### O.R. QUALITY - ECONOMICALLY PRICED

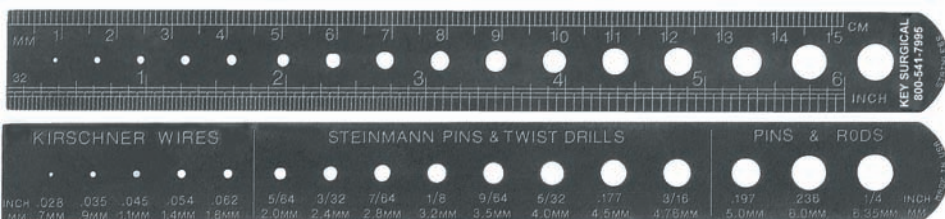
ITEM #	LENGTH	CHAMBER ONE		CHAMBER TWO		CHAMBER THREE		CHAMBER FOUR	
		DIAMETER	QTY HELD	DIAMETER	QTY HELD	DIAMETER	QTY HELD	DIAMETER	QTY HELD
KE-1210	4"	.035" (0.9mm)	18	.045" (1.1mm)	24	.054" (1.4mm)	24	.062" (1.6mm)	12
KE-1220	12"	.035" (0.9mm)	30	.045" (1.1mm)	30	.054" (1.4mm)	24	.062" (1.6mm)	12

## Ruler and Pin Gauge... KI-39-710

The Key Surgical Ruler and Pin Gauge is a practical tool that measures inches, millimeters and 16 sizes of wires and pins.

- An essential compliment to K-wire and Steinmann pin usage
- Made from 420 series stainless steel with a thickness of .025" for long-lasting durability

Six inch ruler has graduation marks in inches and millimeters; Hole gauges measure from .028" (0.7mm) to .25" (6.35mm).



# Pliers, Wire and Pin Cutters

## German Stainless Steel Pliers

Bend, pull and remove pins with finely finished German Pliers, designed to withstand the toughest O.R. assignments.



Locking Pliers



Double Action Wire Cutter



Cannulated Pin Cutter



Slip Joint Pliers



Needle Nose Pliers

### Item #

KI-48-242	Needle Nose Pliers	5" delicate (w/wire guide)	
KI-48-245	Needle Nose Pliers	6" (tapers to 2mm tip)	
KI-48-246	Flat Nose Pliers	5-1/2" broad (5mm tip)	
KI-46-578	Pin Puller	5-1/2" w/groove	w/carbide inserts
KI-48-248	Flat Nose Pliers	6" delicate (2mm tip)	
KI-48-254	Flat Nose Pliers	7" with K-Wire groove and side groove	
KI-48-256	Flat Nose Pliers	7"	
KI-46-572	Wire Extraction Pliers	7" (2mm delicate jaw)	w/carbide inserts
KI-46-573	Wire Extraction Pliers	7" (3mm delicate jaw)	w/carbide inserts
KI-48-253	Narrow Nose Pliers	7-1/2" (tapers to 3mm)	
KI-48-262	Slip Joint Pliers	8" (10mm tip)	
KI-48-604	Parallel Pliers	7" (10mm tip)	
KI-48-605	Parallel Pliers	7-1/4" w/cutter (.062" max)	
KI-48-600	Small Locking Pliers	6-3/4" (tip width 7mm)	
KI-48-602	Medium Locking Pliers	8" (tip width 9mm)	
KI-48-608	Large Locking Pliers	10" (tip width 13mm)	
KI-48-606	Needle Nose Locking Pliers	9-1/2" (length of jaw 2-1/2" • tip width 5mm)	
KI-48-610	Lg. Needle Nose Locking Pliers	12" (length of jaw 3" • tip width 7mm)	

## German Wire and Pin Cutters

A full range of instruments to expertly cut everything from delicate cerclage wire up to 1/4" pins.

### Item #

KI-35-200	Wire Cutting Scissors	4-3/4" serrated blade (for cerclage)	w/carbide inserts
KI-46-622	Delicate Wire Cutter	4-3/4" side cutting (.045" max)	w/carbide inserts
KI-49-734	K-Wire Side Cutter	6" side cutting (.045" max)	w/carbide inserts
KI-46-621	Side Cutter	7" side cutting (.062" max)	w/carbide inserts
KI-46-623	Double Action Wire Cutter	7" angled, side cutting (.062" max)	w/carbide inserts
KI-46-625	Front & Side Wire Cutter	7" front & side cutting (.062" max)	w/carbide inserts
KI-46-631	Flush Wire & Cable Cutter	7" front & side cutting (.062" max)	w/carbide inserts
KI-46-647	Cannulated Pin Cutter	7-1/2" end cutting (.062" max)	
KI-46-651	Pin Cutter Diamond	6-1/2" (5/64" max)	
KI-46-624	Double Action Wire Cutter	8-1/2" angled, side cutting (3/32 max)	w/carbide inserts
KI-49-736	Side Cutter	9" side cutting (3/32 max)	w/carbide inserts
KI-46-626	Large Pin Cutter	22" side cutting (.25 max)	

## Needle Nose Pliers ☺☺

### TAPERED JAW

KS-501	4-3/4" smooth
KS-502	4-3/4" serrated
KS-503	5-1/2" smooth
KS-504	5-1/2" serrated
KS-530	8" serrated (Long Jaw 3")

### PROLONG JAW

KS-505	6" smooth
KS-506	6" serrated

### WIDE JAW

KS-507	5-1/2" smooth
KS-508	5-1/2" serrated

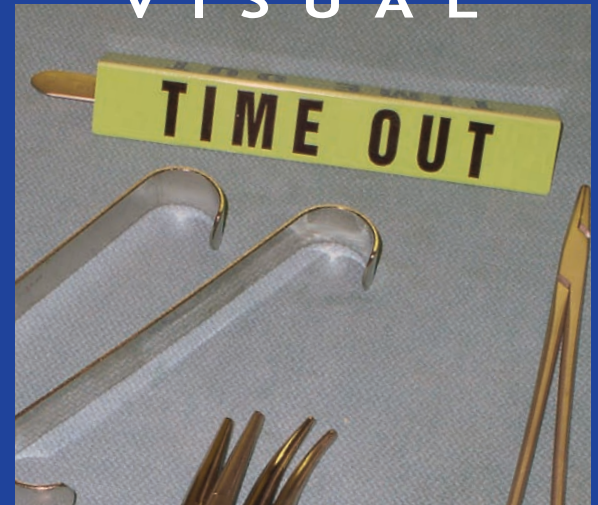
## Slip Joint Pliers ☺☺

KS-500	6"
KS-509	8"
KS-510	10"

# General Instruments

	Floor Grade	Stainless O.R. Quality
	<u>Item #</u>	<u>Item #</u>
<b>SCISSORS</b>		
Iris Scissors/straight 4.5"	KS-118	KE-180
Iris Scissors/curved 4.5"	KS-119	KE-182
Lister Bandage Scissors 4.5"	KS-302	
Lister Bandage Scissors 5.5"	KS-303	KE-102
Lister Bandage Scissors 7.25"	KS-304	KE-104
Mayo Scissors/straight 5.75"	KS-114	KE-130
Mayo Scissors/straight 6.75"	KS-116	KE-132
Mayo Scissors/curved 6.75"	KS-117	KE-134
O.R. Scissors/straight s/b 5.5"	KS-305	KE-120
Wire Cutting Scissors 4.75"	KS-300	KE-170
<b>FORCEPS</b>		
Halsted Mosq. Frcps. strt. 5"	KS-412	KE-220
Halsted Mosq. Frcps. crvd. 5"	KS-413	KE-222
Kelly Forceps straight 5.5"	KS-414	KE-226
Kelly Forceps curved 5.5"	KS-415	KE-228
Crile Forceps straight 5.5"	KS-418	KE-230
Crile Forceps curved 5.5"	KS-419	KE-232
Roch-Pean Frcps. strt. 6.25"	KS-424	KE-242
Roch-Pean Frcps. crvd. 6.25"	KS-425	KE-244
Roch-Pean Frcps. strt. 7.5"	KS-426	KE-246 (8")
Roch-Pean Frcps. crvd. 7.5"	KS-427	KE-250 (8")
Roch-Ochsner Frcps. strt. 6.25"	KS-430	KE-262
Roch-Ochsner Frcps. strt. 7.25"	KS-432	KE-266 (8")
Foerster Frcps. strt. serr. 9.5"	KS-205	KE-276
Backhaus Twl. Frcps. perf. 3.5"	KS-200	KE-292
Backhaus Twl. Frcps. perf. 5.25"	KS-201	KE-294
Lorna Twl. Frcps. non-perf. 4"	KS-202 (3.5")	KE-296
Lorna Twl. Frcps. non-perf. 5.25"	KS-203	KE-298
Dressing Forceps serr. 5.5"	KS-450	KE-310
Tissue Forceps (1x2) 5.5"	KS-440	KE-322
Adson Frcps/serr./std. 4.75"	KS-436	KE-332
Adson Frcps (1x2)/std. 4.75"	KS-437	KE-334
Allis Tissue Frcps (4x5) 6"	KS-435	KE-400
Allis Tissue Frcps. (5x6) 6"	KS-435 A	KE-402
Schroeder Tenaculum Frcps. 9.5"	KS-800	KE-408
<b>NEEDLE HOLDERS</b>		
Crile-Wood Needle Hldr. serr. 6"	KS-463	KE-364
Mayo-Hegar Needle Hldr. 6"	KS-470	KE-372
Mayo-Hegar Needle Hldr. 7"	KS-466	KE-374
Mayo-Hegar Needle Hldr. 8"	KS-467	KE-376
<b>TUBING CLAMPS</b>		
Vorse Tubing Clamp 7.5"	KS-401	
Presbyterian Tubing Clamp 7.5"	KS-407	

# NEW! TIME OUT VISUAL



## BE IN COMPLIANCE WITH THE JCAHO UNIVERSAL PROTOCOL...

*"WRONG SITE, WRONG PROCEDURE,  
WRONG PERSON SURGERY CAN AND  
MUST BE PREVENTED."*

Create a culture of patient safety by using this colorful visual that prompts all members of the surgical team to take a "Time Out" prior to the start of any procedure.

The "Time Out" visual is placed over the surgical knife on the Mayo stand during set-up and prompts the staff to perform the Final Verification process before the procedure begins.

After the Final Verification is completed, the knife is given to the surgeon and the "Time Out" visual is returned to the instrument pan.

"Time Out" visuals are stainless steel and reusable.

To help implement your "Time Out" initiative, sample Final Verification forms and wall signs are available for download from our web site at no charge.

**ITEM # MJ-500**  
25 per package

**KEY SURGICAL**  
INCORPORATED

1-800-541-7995 OR KEYSURGICAL.COM

# Key® Instrument Protect-A-Caps CE



Protect your instruments from costly repairs. All Key Surgical Protect-A-Caps are Radiopaque, Non-Sterile, Disposable, Latex Free and Steam Sterilizable (documentation available upon request). Available with air slits to prevent vacuum seal.

## Round Caps (100 Caps/pkg.)



COLOR	ITEM #	DIAMETER	LENGTH
White-Solid	3-01-01	.062 (1/16")	.75 (3/4")
White-Tint	3-02-01	"	"
Clear	3-03-01	"	"
Clear w/ slits	3-04-01	"	"
White-Tint w/ slits	3-08-01	"	"
Blue-Solid	3-01-02	.078 (5/64")	.75 (3/4")
Blue-Tint	3-02-02	"	"
Clear	3-03-02	"	"
Clear w/ slits	3-04-02	"	"
Blue-Tint w/ slits	3-08-02	"	"
Green-Solid	3-01-03	.109 (7/64")	.75 (3/4")
Green-Tint	3-02-03	"	"
Clear	3-03-03	"	"
Clear w/ slits	3-04-03	"	"
Green-Tint w/ slits	3-08-03	"	"
Red-Solid	3-01-04	.125 (1/8")	1.00 (1")
Red-Tint	3-02-04	"	"
Clear	3-03-04	"	"
Clear w/ slits	3-04-04	"	"
Red-Tint w/ slits	3-08-04	"	"
Yellow-Solid	3-01-05	.187 (3/16")	1.00 (1")
Yellow-Tint	3-02-05	"	"
Clear	3-03-05	"	"
Clear w/ slits	3-04-05	"	"
Yellow-Tint w/ slits	3-08-05	"	"
Purple-Solid	3-01-06	.406 (2/5")	.75 (3/4")
Purple-Tint	3-02-06	"	"
Clear	3-03-06	"	"
Clear w/ slits	3-04-06	"	"
Purple-Tint w/ slits	3-08-06	"	"



# Key® Instrument Protect-A-Caps CE



## Flat Caps (100 Caps/pkg.)

COLOR	ITEM #	WIDTH	LENGTH
Orange-Solid	3-01-07	.375 (3/8")	1.00 (1")
Orange-Tint	3-02-07	"	"
Clear	3-03-07	"	"
Clear w/ slits	3-04-07	"	"
Orange-Tint w/ slits	3-08-07	"	"
<hr/>			
Brown-Solid	3-01-08	.625 (5/8")	1.00 (1")
Brown-Tint	3-02-08	"	"
Clear	3-03-08	"	"
Clear w/ slits	3-04-08	"	"
Brown-Tint w/ slits	3-08-08	"	"
<hr/>			
Black-Solid	3-01-09	1.00 (1")	1.00 (1")
Black-Tint	3-02-09	"	"
Clear	3-03-09	"	"
Clear w/ slits	3-04-09	"	"
Black-Tint w/ slits	3-08-09	"	"

## Osteotome Caps (100 Caps/pkg.)

COLOR	ITEM #	WIDTH	LENGTH
Clear	3-03-11	.25 (1/4")	.75 (3/4")
Clear w/ slits	3-04-11	.25 (1/4")	.75 (3/4")
Clear	3-03-12	.375 (3/8")	1.00 (1")
Clear w/ slits	3-04-12	.375 (3/8")	1.00 (1")
<hr/>			
Clear	3-03-13	.50 (1/2")	1.00 (1")
Clear w/ slits	3-04-13	.50 (1/2")	1.00 (1")
Clear	3-03-15	.75 (3/4")	1.00 (1")
Clear w/ slits	3-04-15	.75 (3/4")	1.00 (1")
<hr/>			
Clear	3-03-16	1.00 (1")	1.00 (1")
Clear w/ slits	3-04-16	1.00 (1")	1.00 (1")
Clear w/ slits	3-04-17	1.25 (1-1/4")	1.25 (1-1/4")
<hr/>			
Clear w/ slits	3-04-18	1.50 (1-1/2")	1.50 (1-1/2")
Clear w/ slits	3-04-19	1.75 (1-3/4")	1.25 (1-1/4")



## Key® Twin Caps CE

COLOR	ITEM #	WIDTH	LENGTH
Tinted White	3-06-01	.062	.75
Tinted Blue	3-06-02	.078	.75
Tinted Green	3-06-03	.109	.75
Tinted Red	3-06-04	.125	1.00
Tinted Yellow	3-06-05	.187	1.00
Tinted Orange	3-06-07	.375	1.00

Quantity: 50 Twin Caps/package

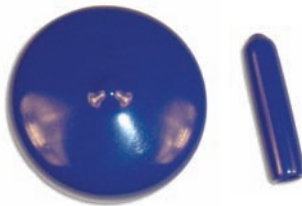


## Key® Specialty Caps CE

DESCRIPTION	ITEM #	DIAMETER	LENGTH
Round-Clear/Slit	3-04-98	.155	.710
Round-Clear/Slit	3-04-99	.187	1.50



Round-Solid Neon Pink	3-05-25	.187	1.50
Round-Solid Red	3-05-27	.312	1.50
Scope-Solid Neon Orange	3-05-26	.406	1.50
Scope-Navy (camera con)	3-05-28	.437	1.00



Scope-Navy (eye piece)	3-05-29	1.25	.25
Scope-Navy (distal end)	3-05-30	.156	1.00

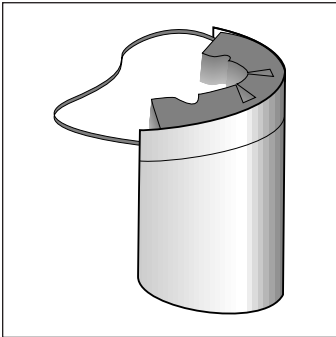


Round-Clear Open Ends (for Gelpi Retractors)	3-09-03	.312	1.50
Round-Clear Open Ends (for Gelpi Retractors)	3-09-04	.312	2.00

Quantity: 100 Specialty Caps/Package

# Key® Face Shields

Lightweight • Comfortable • Anti-Fog • Cost Effective

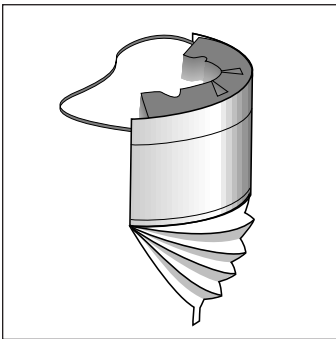


## Full Face Shield €€

- 13" Wide
- 7-1/2" Long
- Latex free

**Item #**

**KF-4505** (24 shields/box)



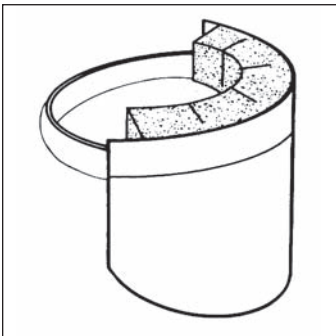
## Face Shield with Tyvek® Expander €€

- Plastic Shield: 13" Wide, 5" Long
- Non-Porous Tyvek®: 5" Long
- Latex free

**Item #**

**KF-4509** (24 shields/box)

Tyvek® Registered Trademark of Dupont

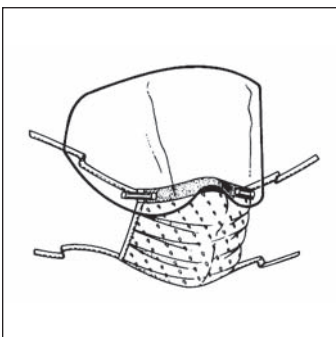


## Short Face Shield

- 13" Wide
- 5" Long
- Latex free

**Item #**

**4511** (24 shields/box)



## Face Shield With Mask

- Combination surgical mask with visor shield
- Flex-tabs allow a customized fit
- Latex free

**Item #**

**4507** (25 shields/box)

# Key® Color Coded Locking Tags €€

Item # LT-450  
Red  
Preprinted  
"Repair"



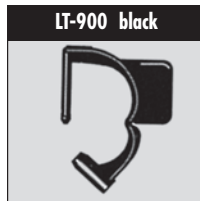
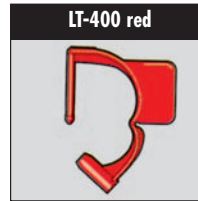
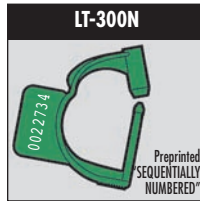
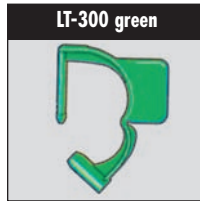
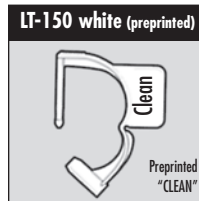
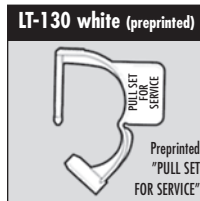
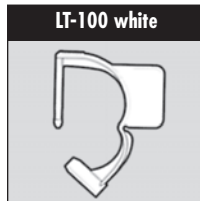
An ideal marking system of brightly colored tags that quickly identifies or marks instruments, carts, trays, cabinets or other equipment.

**100 PER PACKAGE**

## FEATURES

- Available in twelve colors
- Non-sterile
- Autoclavable
- Tamper resistant
- Latex free
- Special order custom tags on request
- Durable and economical
- Quick and easy to attach
- Versatile – adopt to your own specific coding needs
- Brightly colored tags replace hard to see safety pins and suture

## Standard Colors

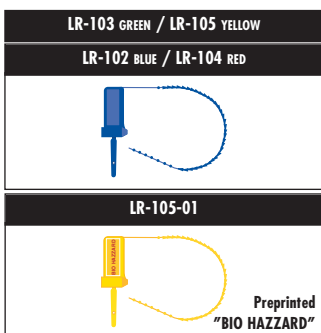
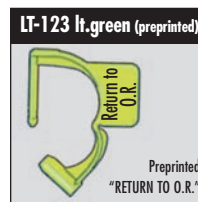


## Sequentially Numbered Locking Tags

Color	Item #
White	LT-100N
Green	LT-300N
Red	LT-400N
Yellow	LT-500N

Other colors available through special order.

## Special Colors



## Break-Away Tags

- ### FEATURES
- Pull/twist action for removal
  - Can be written on with permanent marker
  - One time use

**100 PER PACKAGE**

## Pad Lock Tags



# Key® Repair Identification Tags €€



White 3" x 5" tear proof tags, pre-printed or blank, used to easily identify damaged instruments or equipment.

## FEATURES

- Tags and ties autoclavable
- Available pre-printed or blank
- Can be written on with permanent marker
- Non-sterile
- Time saver
- Versatile - your specific instructions can be written on tag
- Durable and economical
- Latex free



### PREPRINTED REPAIR TAGS ITEM # RT-100

Each package contains:

- 100 tags
- 100 ties
- 1 marker pen

### BLANK TAGS ITEM # RT-200

Each package contains:

- 100 tags
- 100 ties
- 1 marker pen

### PENS ITEM # RT-100P

Black Lab Marker

- 10 pens/pkg  
(Ink is resistant to autoclaving, alcohol & water)

# Key® Utility Scissors €€

## Standard 7-1/2"

Item #	Color
KS-100	Black
KS-101	White
KS-102	Blue
KS-103	Green
KS-103T	Teal
KS-104	Red
KS-105	Yellow
KS-107	Purple
KS-108	Lime
KS-109	Neon Pink
KS-165	Magenta
KS-166	Neon Orange

## Small 5-1/2" (pocket size)

Item #	Color
KS-065	Magenta
KS-066	Neon Orange
KS-090	Black
KS-092	Blue
KS-093	Green
KS-093T	Teal
KS-094	Red
KS-095	Yellow
KS-097	Purple
KS-098	Lime
KS-099N	Neon Pink



### Non-Sterile

Autoclavable - All purpose shears with stainless steel blades.  
For use in E.R., C.S., Anesthesia, O.R., Orthopedics, etc.  
For use in cutting: Casts, Bandages, Tubing, Drapes, etc.

# Key® Hand Immobilizers



## DuraHand™

- Non sterile
- Latex free
- Reusable
- Lightweight
- Lead free
- Inexpensive

KS-840	9-1/2" x 8-1/2"	Large	2 per package
KS-841	13" x 10-1/2"	Extra Large	2 per package



## Aluminum Hands

- Sterile
- Disposable
- Foam backing provides secure grip and comfort

KS-836	9-1/2" x 8-1/2"	Large	4 per box
KS-837	13" x 10-1/2"	Extra Large	3 per box



## Lead Hands

- Non sterile
- Original surgical hand immobilizer

KI-49-092	9 1/2"	Child	Each
KI-49-090	14"	Adult	Each

# Key® Lint Removers

*Keeps Your Sterile/Surgical Areas Lint Free*



- The "Peels Off" Lint Remover is designed for heavy duty hospital use.
- New rugged plastic handle is sturdy and comfortable to hold
- Each roll contains 30 feet of long lasting, top quality Lint Remover tape cut into individual sheets for fast removal.

MJ-012	Box of 12 lint remover rolls
MJ-001	Handle

# Key® Bundling Straps

*Designed for O.R., Recovery, E.R. & General Hospital Use*



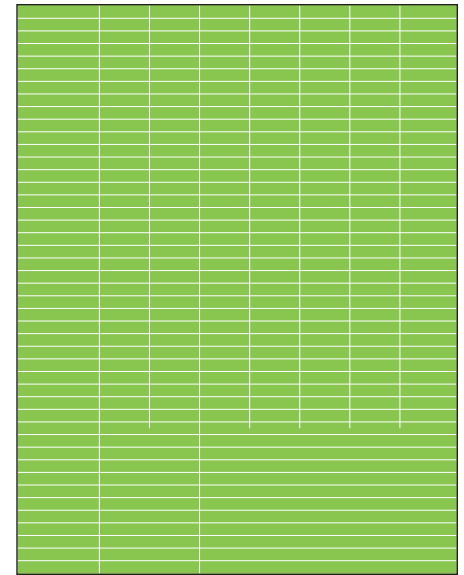
- Hook and loop design allows for quick and easy bundling of: Electrical Cords, IV Lines, Overhead Microscopes Cords, etc.
- Neon colors for quick identification of cords, lines etc.
- Latex free

Item #	Color	Width	Length
MJ-402	Blue	1"	12"
MJ-403	Green	1"	12"
MJ-404	Red	1"	12"
MJ-405	Yellow	1"	12"
MJ-407	Orange	1"	12"
MJ-409	Pink	1"	12"
MJ-400	Asstd Pk	1"	12"

30/Pkg. Non-Sterile



# Key® Instrument Color Coding Tape CE



## Roll Tape

Steam Sterilizable • Withstands repeated sterilization cycles

### AVAILABLE IN 3 WIDTHS:

- 1/8" x 250"
- 1/4" x 250"
- 3/8" x 250"

COLOR/DESCRIPTION	ITEM #	ITEM #	ITEM #
	1/8" ROLL	1/4" ROLL	3/8" ROLL
White	T-01-01	T-02-01	T-03-01
Blue	T-01-02	T-02-02	T-03-02
Green	T-01-03	T-02-03	T-03-03
Red	T-01-04	T-02-04	T-03-04
Yellow	T-01-05	T-02-05	T-03-05
Purple	T-01-06	T-02-06	T-03-06
Orange	T-01-07	T-02-07	T-03-07
Brown	T-01-08	T-02-08	T-03-08
Black	T-01-09	T-02-09	T-03-09

### COLOR CODING TAPE APPLICATION INSTRUCTIONS:

- Clean and dry surface to remove any milk bath residue
- Wipe area with alcohol where tape is to be applied
- Cut tape to length (DO NOT STRETCH)
- Overlap tape a minimum of once, not more than twice
- Tape will bond to instrument during autoclave process
- Replace tape when necessary

## Pre-cut Sheet Tape

Steam Sterilizable • Withstands repeated sterilization cycles

### 1/8" WIDE TAPE

Each 8-1/2"x11" Sheet includes:

- 462 pieces of 1/8" x 1"
  - 88 pieces of 1/8" x 1-1/2"
  - 22 pieces of 1/8" x 2"
  - 22 pieces of 1/8" x 5"
- (Total per sheet is 748")

### 1/4" WIDE TAPE

Each 8-1/2"x11" Sheet includes:

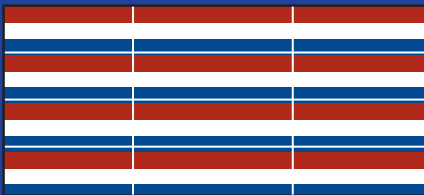
- 231 pieces of 1/4" x 1"
  - 44 pieces of 1/4" x 1-1/2"
  - 11 pieces of 1/4" x 2"
  - 11 pieces of 1/4" x 5"
- (Total per sheet is 374")

COLOR/DESCRIPTION	ITEM #	ITEM #
	1/8" SHEET	1/4" SHEET
White	T-11-01	T-21-01
Blue	T-11-02	T-21-02
Green	T-11-03	T-21-03
Red	T-11-04	T-21-04
Yellow	T-11-05	T-21-05
Purple	T-11-06	T-21-06
Orange	T-11-07	T-21-07
Brown	T-11-08	T-21-08
Black	T-11-09	T-21-09
Red/Orange	T-11-10	T-21-10
Pink	T-11-11	T-21-11
Grey	T-11-12	T-21-12
Lime Green	T-11-13	T-21-13
Light Blue	T-11-14	T-21-14
Lavender	T-11-15	T-21-15
Beige	T-11-16	T-21-16
Plum	T-11-17	T-21-17

# Key<sup>®</sup> Instrument Color Coding Sheet Tape CE



1/4" WIDE TWO COLOR DIAGONAL STRIPED PRE-CUT SHEET TAPE



1/4" WIDE THREE COLOR HORIZONTAL STRIPED PRE-CUT SHEET TAPE

## Adhesive Remover



### FEATURES

- Environmentally Safe
- No Hazardous Solvents or Toxic Fumes
- Quickly and Easily Removes Tape Residue
- Works on Most Surfaces
- Restores Surface to Original Condition
- Fresh Citrus Fragrance

MJ-7004 Case of 6 (4oz. bottle)



1-800-541-7995 OR KEYSURGICAL.COM

COLOR	DESCRIPTION	ITEM #
	White/Blue	T-22-102
	White/Green	T-22-103
	White/Red	T-22-104
	White/Yellow	T-22-105
	White/Purple	T-22-106
	White/Orange	T-22-107
	White/Brown	T-22-108
	White/Black	T-22-109
	White/Flo. Orange	T-22-110
	White/Pink	T-22-111
	White/Lime	T-22-113
	White/Light Blue	T-22-114
	White/Lavender	T-22-115
	Blue/Green	T-22-203
	Blue/Red	T-22-204
	Blue/Yellow	T-22-205
	Blue/Purple	T-22-206
	Blue/Orange	T-22-207
	Yellow/Green	T-22-503
	Yellow/Red	T-22-504
	Yellow/Purple	T-22-506
	Yellow/Orange	T-22-507
	Black/Green	T-22-903
	Black/Red	T-22-904
	Black/Yellow	T-22-905
	Black/Purple	T-22-906
	Black/Orange	T-22-907
	Black/Flo. Orange	T-22-910
	Black/Pink	T-22-911
	Black/Grey	T-22-912
	Black/Lime	T-22-913
	Black/Light Blue	T-22-914
	Black/Lavender	T-22-915
	Black/Beige	T-22-916



# Key® Instrument Color Coding Sheet Tape CE

COLOR	DESCRIPTION	ITEM #
	Red-White-Blue	T-23-412
	Red-White-Black	T-23-419
	Red-Green-Black	T-23-439
	Red-Yellow-Black	T-23-459
	Yellow/ 0	T-26-500
	Yellow/ 1	T-26-501
	Yellow/ 2	T-26-502
	Yellow/ 3	T-26-503
	Yellow/ 4	T-26-504
	Yellow/ 5	T-26-505
	Yellow/ 6	T-26-506
	Yellow/ 7	T-26-507
	Yellow/ 8	T-26-508
	Flo. Orange/ O	T-26-100
	Flo. Orange/ P	T-26-10P
	Yellow/ A	T-26-5A
	Yellow/ B	T-26-5B
	Yellow/ C	T-26-5C
	Yellow/ E	T-26-5E
	Yellow/ G	T-26-5G
	Yellow/ L	T-26-5L
	Yellow/ N	T-26-5N
	Yellow/ O	T-26-500
	Yellow/ P	T-26-5P
	Yellow/ T	T-26-5T
	Yellow/ U	T-26-5U

COLOR	DESCRIPTION	ITEM #
	Blue/GEN	T-27-2GEN
	Black/GEN	T-27-9GEN
	Green/ENT	T-27-3ENT
	Lavender/ENT	T-27-15ENT
	Orange/ER	T-27-7ER
	Blue/ER	T-27-2ER
	Red/ER	T-27-4ER
	Pink/L&D	T-27-11L&D
	Purple/GYN	T-27-6GYN
	Orange/GYN	T-27-7GYN
	Orange/NEU	T-27-7NEU
	Pink/NEU	T-27-11NEU
	Blue/BONES	T-28-22
	Green/BONES	T-28-32
	Red/BONES	T-28-42
	Orange/BONES	T-28-72
	Green/HEARTS	T-28-31
	Red/HEARTS	T-28-41
	Purple/HEARTS	T-28-61
	Blue/SPN	T-27-2SPN
	Green/EYE	T-27-3EYE
	Red/PLA	T-27-4PLA
	Purple/URO	T-27-6URO

# Key® Specialty Cleaning Brushes CE

## Disposable Instrument Cleaning Brushes



Item #	Qty Per Pkg.	Brush Diameter	Equivalent French Catheter Size	Length of Bristle Area	End to End Length
BR-3050	2	.062 (1/16")	4.7	1/2"	6"
BR-3100	2	.062 (1/16")	4.7	1/2"	18"
BR-3110	2	.070	5.3	1/2"	18"
BR-3125	2	.070	5.3	1/2"	24"
BR-3113	2	.079	6	1/2"	6"
BR-3114	2	.079	6	3/4"	12"
BR-3115	2	.080	6.1	1"	24"
BR-3120	2	.087	6.6	1/2"	18"
BR-3130	2	.105	8	1"	18"
BR-3137	2	.118	9	2-3/4"	12"
BR-3140	2	.125 (1/8")	9.5	2"	18"
BR-3142	2	.144	11	3/4"	8"
BR-3143	2	.158	12	3/4"	8"
BR-3144	2	.197	15	3"	16"
BR-3145	2	.200	15.2	2"	24"
BR-3150	2	.250 (1/4")	19	2"	18"
BR-3152	2	.250 (1/4")	19	2"	8"
BR-3153	2	.276	21	3"	16"
BR-3155	2	.312 (5/16")	24	3"	24"
BR-3160	2	.880 (7/8")		3-1/2"	18"
BR-3165	2	.880 (7/8")		4-1/4"	24"
BR-3170	3	.375 (3/8")	29	1-1/2"	6"
BR-3173	2	.393	30	3"	16"
BR-3175	2	.440 (7/16")	34	3"	24"
BR-3180	2	.440 (7/16")	34	3"	8"

### **Stainless Steel Bristles**

BR-2300	2	.438		2"	6"
---------	---	------	--	----	----

### **Nylon Bristles, Fan End**

BR-4100	2	.500 (1/2")		3"	18"
---------	---	-------------	--	----	-----

### **Nylon Bristles, Tapered End**

BR-4120	2	FROM .250 to .600		2"	18"
---------	---	-------------------	--	----	-----

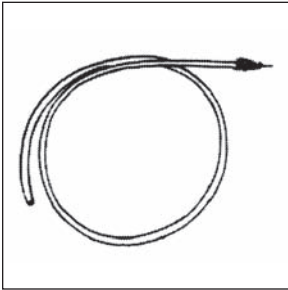
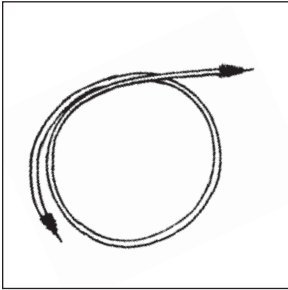
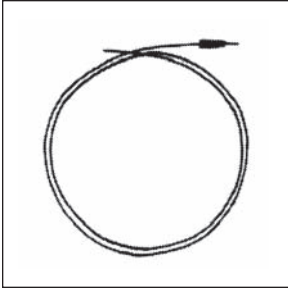
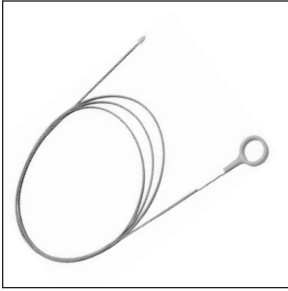

### **Nylon Brush is centered on Stainless Steel Wire**

BR-4140	6	.500 (1/2")		3"	24"
---------	---	-------------	--	----	-----

### **Brush Assortment**

BR-4199 INCLUDES 1 PACKAGE OF THE FOLLOWING BRUSHES: BR-3100, BR-3120, BR-3130, BR-3140, BR-3150, BR-4100, N-2100, N-2121, S-2100

# Key® Specialty Cleaning Brushes CE

		ITEM #	BRUSH DIAMETER	LENGTH OF BRISTLE AREA	END TO END LENGTH
	Extra-long specialty cleaning brush. Nylon bristle tip attached to rigid plastic tubing. Bristles on one end only.	BR-3308	Tapered 3-5 mm	1 cm	230 cm
		BR-3310	Tapered 3-5 mm	2 cm	230 cm
	Extra-long specialty cleaning brush. Nylon bristle tip attached to rigid plastic tubing. Bristles attached to both ends.	BR-3320	Tapered 3-5 mm	1 cm	230 cm
		BR-3330	Tapered 3-5 mm	2 cm	230 cm
	Delicate pull-through cleaning brush. Nylon bristle tip attached to stainless steel wire. Brush at one end only.	BR-3030	1.1 mm	1 cm	65 cm
		BR-3040	2.0 mm	1 cm	120 cm
		BR-3410	3.0 mm	1 cm	120 cm
		BR-3420	3.0 mm	1 cm	160 cm
	Extra long specialty cleaning brush. Nylon bristles attached to stainless steel spring coil wire. Loop handle at one end and beaded tip at bristle end.	BR-3300	Tapered 4-6 mm	1 cm	230 cm
		BR-3305	3-5 mm	1 cm	115 cm
	Specialty cleaning brush	BR-3307	10.3 mm	4 cm	11 cm

## PIPE CLEANER CE 50 FEET PER ROLL

ITEM #	DESCRIPTION	ITEM #	DESCRIPTION
PC-100C	.....1/8" Cotton	PC-300P	.....1/8" Poly
PC-200C	.....1/4" Cotton	PC-400P	.....1/4" Poly

# Key® Burr Cleaning Brushes €

*Brushes specially designed for cleaning burs, rasps, files or saws*

**Features:** Autoclavable • Stainless Steel wire bristle • Disposable  
Latex free • Economical • Sold non-sterile

Item #	Description	Brush Width	Length of Bristle Area	End to End Length
BR-1010	Round Burr Brush	3/8"	1/2"	2-1/2"
BR-1031	Single Row Burr Brush	1/8"	1-1/4"	6"
BR-1033	Three Row Burr Brush	3/8"	1-1/4"	6"
BR-1050	Assortment - 1 each (BR-1010, BR-1031, BR-1033)			



# Tooth Brush Style Cleaning Brushes €

Item #	Qty Per Pkg.	Brush Width	Length of Bristle Area	End to End Length
N-2121	2			7"
Double ended brush. Three rows of Nylon bristles on one end. One row of bristles on the other end.				
N-2100	3	1/4"	1-3/8"	7"
Three rows of Nylon bristles				
B-2100	3	1/4"	1-3/8"	7"
Three rows of brass bristles				
S-2100	3	1/4"	1-3/8"	7"
Three rows of stainless steel bristles				
S-2131	3	1/8"	1-3/8"	7"
Single row of stainless steel bristles				



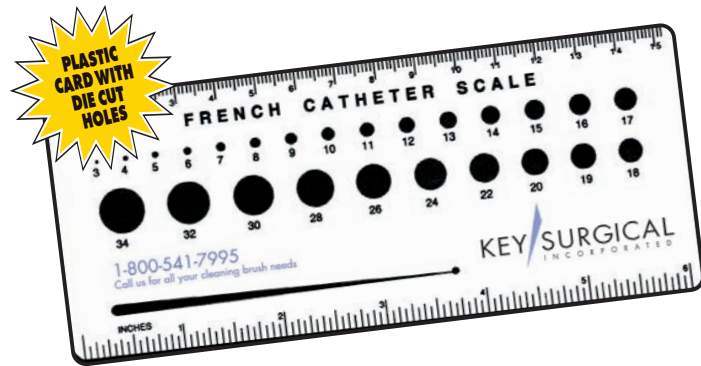
# General Instrument Cleaning Brushes €

Item #	Qty Per Pkg.	Description	Brush Width	Length of Bristle Area	End to End Length
N-3000	1	Solid poly block handle with Nylon bristles (HEAT TOLERANT)	3/4"	2-1/2"	7-1/8"
N-4000	1	Molded brush handle with Nylon bristles	1-1/4"	2-1/2"	7-1/4"



# Key® French Catheter Scale

Choose the right size Instrument Cleaning Brush



Item # MJ-370

4 per package

# Key® Brush Organizer CE

Stainless Steel • Easily Mounts on Wall • Can be Customized to Fit Your Needs Purchase with or without Brushes

## Brush Organizer (No Brushes Included)

Item # BR-7000

12 permanent hooks • 2 adjustable bars with 4 hooks per bar • 16" wide x 32" long

## Brush Organizer (With 9 Assorted Brushes)

Item # BR-7100

Assortment of brushes includes the following sizes:

2 each .062 (Dia.) x 18" Length (BR-3100)

2 each .087 (Dia.) x 18" Length (BR-3120)

2 each .105 (Dia.) x 18" Length (BR-3130)

2 each .125 (Dia.) x 18" Length (BR-3140)

2 each .250 (Dia.) x 18" Length (BR-3150)

2 each .500 (Dia.) x 18" Length (BR-4100)

*All of the above have Nylon bristles and twisted stainless steel wire handles.*

3 each Toothbrush style brush with 3 rows Nylon bristles (N-2100)

3 each Toothbrush style brush with 3 rows stainless steel bristles (S-2100)

2 each Toothbrush style brush with double end (N-2121)

*Three rows of Nylon bristles on one end*

*One row Nylon bristles on the other end*

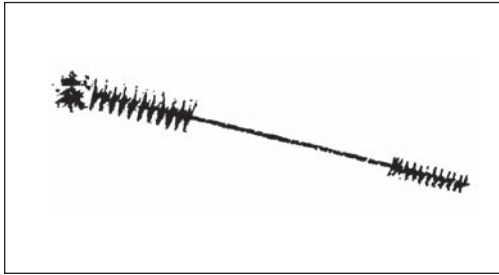
## Accessories

### Extra Adjustable Bar with 4 Hooks

Item # BR-7050

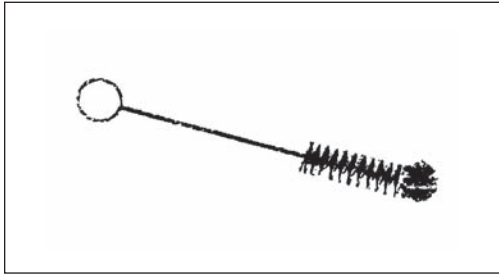


## Key® Specialty Brushes CE



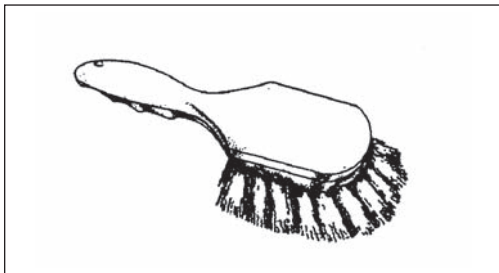
100% sanitary, soak-proofed cleaning brush makes cleaning an easy job. 12" overall length, 1/2" and 1" diameter white Sparlon bristle with a rosebud tip on one end.

**Item # BR-5450**



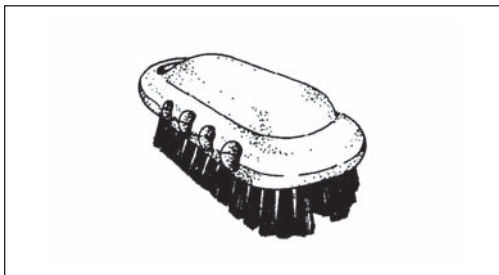
10-1/2" overall length, 3" Brush part, 1" diameter white Sparlon bristle with a rosebud tip. Rigid wire has convenient finger loop.

**Item # BR-5455**



Soak-proof design with pistol-grip handle. Crimped Nylon bristles are locked in a chip and crack-proof block to lock-out bacteria. 1-5/8" bristle trim 8" overall length.

**Item # BR-4000**



Specially designed rows of fine, stiff bristles penetrate beneath fingernails and cuticles to provide a thorough, but gentle cleaning action. Structural foam block is durable, yet comfortable and easy to grip when wet. Convenient hang-up hole. 5" x 2".

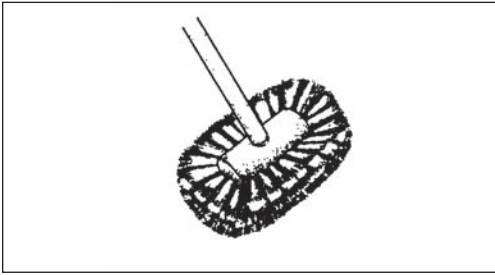
**Item # BR-4200**

## Key® Hand and Nail Scrub Brushes



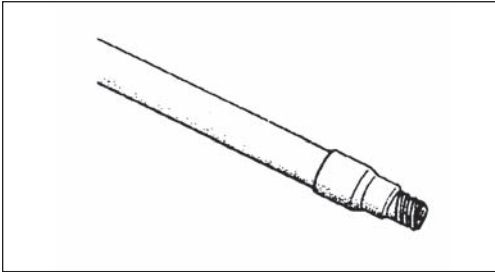
<u>Item #</u>	<u>Description</u>	<u>Quantity</u>
<b>BR-4300</b>	Non Autoclavable (Medium Texture)	Box of 12
<b>BR-4310</b>	Autoclavable (Cub Scrub Hard Texture)	Box of 12
<b>BR-4320</b>	Autoclavable (Medium Texture)	Box of 12

# Key® Sterilizer Cleaning Brushes CE



Features a solid white plastic block that eliminates bacteria buildup that won't chip, crack or splinter. White Nylon bristles and "Flare head" design assures thorough cleaning action from any angle. 5-1/2" face, 9" overall length.  
Order handle BR-5200 or BR-5210.

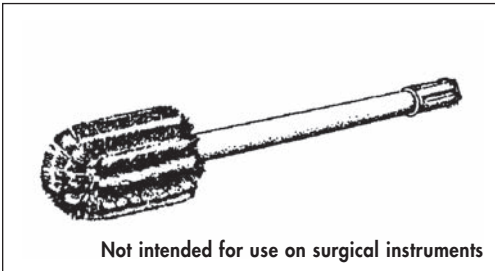
**Item # BR-5400** (Head only)



White plastic threaded handle for use with BR-5400.

**Item # BR-5200 - 36" Long**

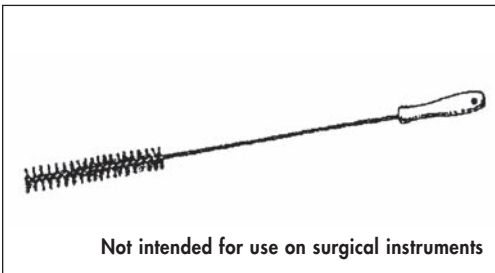
**Item # BR-5210 - 60" Long**



Not intended for use on surgical instruments

Greater reach and cleaning ability. Bristles are set at a forward angle and loosen soil without marring surface. Has 6" long x 5" wide double surface head with Sparlon bristles. 30" overall length.

**Item # BR-5000**

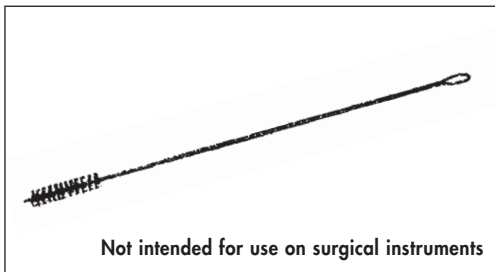


Not intended for use on surgical instruments

White Nylon bristles, steel wire and soak proof plastic handle for maximum sanitation.

1-3/8" diameter, 28" overall length.

**Item # BR-5500**



Not intended for use on surgical instruments

This brush is designed for cleaning out drains, lines and openings. The stiff, crimped 5" white Nylon brush parts last and last. 2" brush diameter, 24" overall length.

**Item # BR-5600**

## Combination Packages

### Item #

### Description

**BR-6000**

Includes 1 each of:  
BR-5000, BR-5200, BR-5400, BR-5500 and BR-5600

**BR-6100**

Includes 1 each of:  
BR-5000, BR-5210, BR-5400, BR-5500 and BR-5600

# Key® Instrument Trays



## Iodine Cups

Item #	Capacity	Dimensions
PW-6G	6 oz.	3-7/16" x 2"
PW-14G	14 oz.	4-3/8" x 2-5/8"



## Medicine Cups

Item #	Capacity	Dimensions
PW-2	2 oz.	2-1/8" x 2"



## Sponge Bowls

Item #	Capacity	Dimensions
PW-52	16 oz.	4-1/4" x 2"
PW-75	20 oz.	5" x 2-3/8"
PW-100	30 oz.	5-9/16" x 2-9/16"
PW-106	36 oz.	6-1/4" x 2-3/4"
PW-148	48 oz.	7-1/8" x 3"
PW-107	64 oz.	7-9/16" x 3"



## Solution Basins

Constructed with easy-to-clean large rounded radius corners for easy pouring, and no spin recessed bottom for stability on flat surfaces.

Item #	Capacity	Dimensions
PW-130	4-1/2 Qt.	12" x 4-1/4"
PW-134	7 Qt.	13-5/8" x 4-5/8"
PW-136	9-1/2 Qt.	14-1/2" x 5"

## Emesis Basins

Vessels feature easy-to-clean seamless design.

Item #	Capacity	Dimensions
PW-6	10 oz.	6-5/8" x 3-1/2" x 1-1/2"
PW-8	12 oz.	8-1/8" x 3-5/8" x 1-5/8"
PW-10	26 oz.	9-7/8" x 4-1/2" x 2-1/8"
PW-12	50 oz.	12" x 5-1/2" x 2-3/8"

Also available in plastic.



# Key® Instrument Trays

## Perforated Instrument Trays

Constructed of heavy-duty 304 18-8 stainless steel, these perforated instrument trays are finished to provide a tough, clean and corrosion-resistant surface for long term use in a variety of applications.

## Perforated Mayo Trays

For excellent steam sterilization without moisture build-up.

Item #	Dimensions			
PW-10F-PMT	10"	x	6-1/2"	x 3/4"
PW-13F-PMT	13-11/16"	x	9-13/16"	x 3/4"
PW-15F-PMT	15-1/8"	x	10-5/8"	x 3/4"
PW-17F-PMT	17"	x	11-5/8"	x 3/4"
PW-19F-PMT	19-1/8"	x	12-5/8"	x 3/4"

## High-Sided Perforated Trays

High sides protect fragile instruments during set-up and procedures.

Item #	Dimensions			
PW-952-HPT	8-7/8"	x	5"	x 2"
PW-1002-HPT	10"	x	6-1/2"	x 2"
PW-1202-HPT	12-1/4"	x	7-3/4"	x 2-1/4"
PW-S12102-HPT	12-3/4"	x	10-3/8"	x 2-1/2"
PW-E1650-HPT	16-1/2"	x	10"	x 2-1/2"
PW-S20122-HPT	20-3/4"	x	12-3/4"	x 2-1/2"

## Instrument Trays and Flat/Solid Covers

Wide assortment of heavy duty, seamless trays have covered corners for easy sterilization. Covers have recessed strap handles for ease in handling and storing.

Item #	Dimensions			
PW-952	8-7/8"	x	5"	x 2"
PW-953	8-7/8"	x	5"	x 3"
PW-952-2	Cover – Fits above two Trays			
PW-1002	10"	x	6-1/2"	x 2
PW-1002-2	Cover – Fits 1002 Tray			
PW-1202	12-1/4"	x	7-3/4"	x 2-1/4"
PW-1202-2	Cover – Fits 1202 Tray			

Order Pans and Covers Separately.

## Catheter Trays and Dome Covers

Heavy duty and seamless, these trays feature dome covers with strap handles for easy handling.

Item #	Dimensions			
PW-83	8-3/4"	x	3-1/4"	x 3-1/4"
PW-83-2	Cover for 83 Tray			
PW-170-0	17-1/4"	x	4-1/2"	x 2"
PW-170-2	Cover for 170 Tray			
PW-952	8-7/8"	x	5"	x 2"
PW-953	8-7/8"	x	5"	x 3"
PW-952D-2	Cover for 952 and 953 Trays			

Order Pans and Covers Separately.

## Oblong Instrument/Drying Trays

The user of these trays benefits from covered corners and large, open bead which allow for easy handling, stacking and cleaning.

Item #	Dimensions			
PW-10F	w/Rolled Bead	10"	x 6-1/2"	x 3/4"
PW-13F	w/Rolled Bead	13-11/16"	x 9-13/16"	x 3/4"
PW-15F	w/Rolled Bead	15-1/8"	x 10-5/8"	x 3/4"
PW-17F	w/Rolled Bead	17"	x 11-5/8"	x 3/4"
PW-19F	w/Rolled Bead	19-1/8"	x 12-5/8"	x 3/4"
PW-1520	w/Rolled Bead	21-1/4"	x 16-1/4"	x 7/8"



# Key® Instrument Sterilization Accessories



## German Stainless Instrument Stringers CE

- Stay-closed design prevents accidental opening.
- Expert hand finishing eliminates sharp edges.
- To open or close, squeeze side bars together then move cross bar.

### Item # Description

KE-904. . .	2-1/2" x 4" Stringer
KE-906. . .	2-1/2" x 6" Stringer
KE-908. . .	2-1/2" x 8" Stringer
KE-910. . .	2-1/2" x 10" Stringer



## Instrument Stringers CE

- Hinged – No Loose Pieces
- Durable Design
- Surgical Stainless Steel
- Easy to open and close

### Item # Description

KS-804. . .	2-1/2" x 4" Stringer
KS-806. . .	2-1/2" x 6" Stringer
KS-808. . .	2-1/2" x 8" Stringer
KS-810. . .	2-1/2" x 10" Stringer

### Item # Description

KS-812	2-1/2" x 12" Stringer
KS-814. . .	2-1/2" x 14" Stringer
KS-816. . .	2-1/2" x 16" Stringer
KS-818. . .	3-1/2" x 18" Stringer
KS-820. . .	3-1/2" x 20" Stringer

## Key® AutoClave Mitt

Perfect for removing HOT trays and racks from the autoclave.



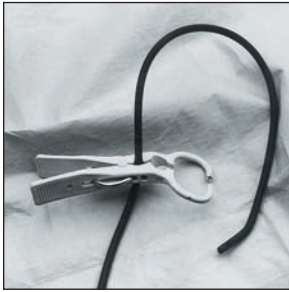
### Item # Description

MJ-360 . . . . .	13" Mitt
MJ-361 . . . . .	17" Mitt

(sold in pairs)

# Towel/Utility Clamp

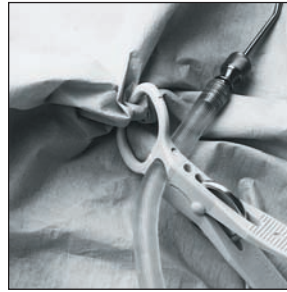
Light color contrasts with drapes • Disposable • Cost effective



Occludes catheter, I.V. and drainage tubes. Ideal for bedside application.



Holds paper or cloth drapes without tearing.



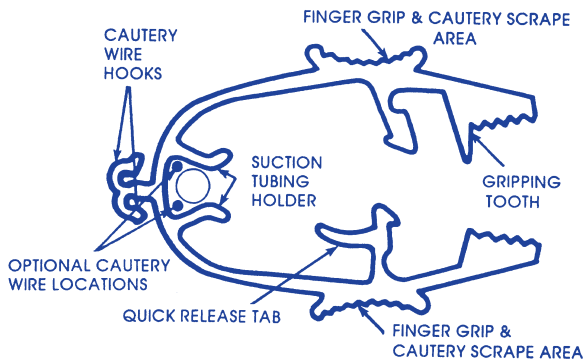
Holds suction tubes in place.



Holds electrocautery cords.

Item #	Quantity
<b>KS-375</b> .....	Non-Sterile 25 ea./package
<i>replaces KS-355</i>	

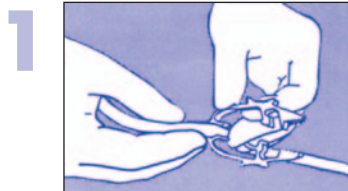
## The GripClip™



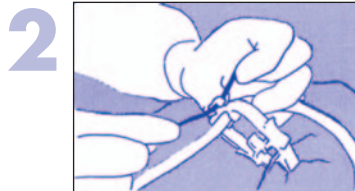
### Features

- Designed to secure Bovie wires and suction tubing to sterile drape area
- Holds Bovie wire .083" – .113"
- Holds suction tubing – .360"
- All Delrin 500 plastic (no metal parts)
- Use finger grip area to clean cautery tip
- Latex free

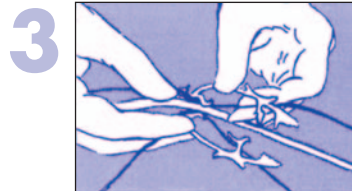
Item #	Quantity
<b>KS-365</b>	Non-Sterile 100 per package
<i>Sample available upon request</i>	



1 Attach suction tubing to GripClip®, then secure onto sterile drape, engaging gripping tooth.



2 Connect electrical cautery wire to appropriate size wire hook. (Option: Insert cautery wire behind suction tubing).



3 To remove, press down quick release tab.

# Co-Flex® NL

The First Latex Free Bandage to Be Truly Cohesive



## 1 Inch Width

Item #	Width	Color	Pkg./Qty.
CF-5100A	1"	Assorted	.30/Case
CF-5100B	1"	Blue	.30/Case
CF-5100G	1"	Neon Green	.30/Case
CF-5100NP	1"	Neon Pink	.30/Case
CF-5100P	1"	Purple	.30/Case
CF-5100R	1"	Red	.30/Case
CF-5100T	1"	Tan	.30/Case
CF-5100W	1"	White	.30/Case

## 1-1/2 Inch Width

Item #	Width	Color	Pkg./Qty.
CF-5150A	1-1/2"	Assorted	.48/Case
CF-5150B	1-1/2"	Blue	.48/Case
CF-5150G	1-1/2"	Neon Green	.48/Case
CF-5150NP	1-1/2"	Neon Pink	.48/Case
CF-5150P	1-1/2"	Purple	.48/Case
CF-5150R	1-1/2"	Red	.48/Case
CF-5150T	1-1/2"	Tan	.48/Case
CF-5150W	1-1/2"	White	.48/Case

## 2 Inch Width

Item #	Width	Color	Pkg./Qty.
CF-5200A	2"	Assorted	.36/Case
CF-5200B	2"	Blue	.36/Case
CF-5200G	2"	Neon Green	.36/Case
CF-5200NP	2"	Neon Pink	.36/Case
CF-5200P	2"	Purple	.36/Case
CF-5200R	2"	Red	.36/Case
CF-5200T	2"	Tan	.36/Case
CF-5200W	2"	White	.36/Case

## 3 Inch Width

Item #	Width	Color	Pkg./Qty.
CF-5300A	3"	Assorted	.24/Case
CF-5300B	3"	Blue	.24/Case
CF-5300G	3"	Neon Green	.24/Case
CF-5300NP	3"	Neon Pink	.24/Case
CF-5300P	3"	Purple	.24/Case
CF-5300R	3"	Red	.24/Case
CF-5300T	3"	Tan	.24/Case
CF-5300W	3"	White	.24/Case

## 4 Inch Width

Item #	Width	Color	Pkg./Qty.
CF-5400A	4"	Assorted	18/Case
CF-5400B	4"	Blue	18/Case
CF-5400G	4"	Neon Green	18/Case
CF-5400NP	4"	Neon Pink	18/Case
CF-5400P	4"	Purple	18/Case
CF-5400R	4"	Red	18/Case
CF-5400T	4"	Tan	18/Case
CF-5400W	4"	White	18/Case

## 6 Inch Width

Item #	Width	Color	Pkg./Qty.
CF-5600A	6"	Assorted	12/Case
CF-5600B	6"	Blue	12/Case
CF-5600G	6"	Neon Green	12/Case
CF-5600NP	6"	Neon Pink	12/Case
CF-5600P	6"	Purple	12/Case
CF-5600R	6"	Red	12/Case
CF-5600T	6"	Tan	12/Case
CF-5600W	6"	White	12/Case

## Available Sterile: Tan Color Only

Item #	Width	Color	Pkg./Qty.
CF-5300S	3"	Tan	24/Case
CF-5400S	4"	Tan	18/Case
CF-5600S	6"	Tan	12/Case

## Co-Flex® NL Printed Latex Free Bandages



These fun new prints have the same high quality you have come to expect, and are priced the same as our solid-color latexfree bandages. Co-Flex NL is easy to apply, will not constrict and tears clean easily by hand.

*Co-Flex NL prints are available in sizes 2", 3", 4" and 6" widths.*

ITEM #	DESCRIPTION	ROLLS/CASE
CF-5200KP	Co-Flex NL 2" Kid Pack	36
CF-5300KP	Co-Flex NL 3" Kid Pack	24
CF-5400KP	Co-Flex NL 4" Kid Pack	18
CF-5600KP	Co-Flex NL 6" Kid Pack	12

# Catalog Price List

Page	Item Description	Price	U/M
1	Vascular Loops . . . . .	14.00 . . . . .	BOX
	Vascular Suture Booties . . . . .	9.00 . . . . .	BOX
	Silicone Clamp Covers (Sterile) . . . . .	20.00 . . . . .	BOX
	Silicone Clamp Covers (Non-Sterile) . . . . .	14.00 . . . . .	PKG
2 - 4	K-Wires & Steinmann Pins, Pin Guards . . . . .	Call	
	K-Wire Dispensers, Pliers, Wire Cutters (German) . . . . .	Call	
5	General Instruments . . . . .	Call	
	TIME OUT Visual . . . . .	150.00 . . . . .	PKG
6-7	Instrument Protect-A-Caps . . . . .	9.00-11.00 . . . . .	PKG
8	Instrument Twin Caps . . . . .	15.00 . . . . .	PKG
	Specialty Caps . . . . .	Call	
9	Full Face Shield (KF-4505) . . . . .	42.00 . . . . .	BOX
	Face Shield w/ Tyvel Expander (KF-4509) . . . . .	68.00 . . . . .	BOX
	Short Face Shield (4511) . . . . .	42.00 . . . . .	BOX
	Face Shield w/ Mask (4507) . . . . .	27.50 . . . . .	BOX
10	Standard Color Coded Locking Tags . . . . .	18.00 . . . . .	PKG
	Special Color Coded Locking Tags . . . . .	22.00 . . . . .	PKG
11	Repair Identification Tags . . . . .	20.00 . . . . .	PKG
	Utility Scissors (small) . . . . .	5.00 . . . . .	EACH
	Utility Scissors (large) . . . . .	5.95 . . . . .	EACH
12	Lead Hand . . . . .	165.00 . . . . .	EACH
	DuraHand™ . . . . .	78.00/84.00 . . . . .	PKG/2
	Lint Removers (refills) . . . . .	30.00 . . . . .	BOX
	Bundling Straps . . . . .	29.00 . . . . .	PKG
13-15	Instrument Color Coded Marking Tape - Rolls . . . . .	8.50 . . . . .	ROLL
	Instrument Color Coded Marking Tape - Sheets . . . . .	11.00 . . . . .	SHEET
16	Specialty Instrument Cleaning Brushes . . . . .	9.00 . . . . .	PKG
	Brush Assortment . . . . .	85.00 . . . . .	PKG
17	Specialty Cleaning Brushes (BR-3308 - BR-3310) . . . . .	6.50 . . . . .	EACH
	Specialty Cleaning Brushes (BR-3320 - BR-3330) . . . . .	8.00 . . . . .	EACH
	Specialty Cleaning Brushes (BR-3030, BR-3040, BR-3410, BR-3420) . . . . .	8.00 . . . . .	EACH
	Pipe Cleaner . . . . .	6.50 . . . . .	ROLL



# Catalog Price List

Page	Item Description	Price	U/M
18	Burr Cleaning Brushes (BR-1010 - BR-1031)	12.00	EACH
	Burr Cleaning Brushes (BR- 1033)	14.00	EACH
	Burr Cleaning Brushes - assortment (BR-1050)	34.00	PKG
	Tooth Brush Style Brushes		
	S-2100, N-2100, B-2100, N-2121	9.00	PKG
	S-2131	12.00	PKG
	General Instrument Cleaning Brushes		
	N-3000	9.00	EACH
N-4000	7.50	EACH	
19	French Catheter Scale	10.00	PKG
	Brush Organizer (BR-7000)	185.00	EACH
20	Specialty Brushes (BR-5450 - BR-5455)	6.00	EACH
	Specialty Brushes (BR-4000)	8.00	EACH
	Specialty Brushes (BR-4200)	5.00	EACH
	Hand & Nail Scrub Brushes (BR-4300)	13.00	BOX
	Hand & Nail Scrub Brushes (BR-4310 - BR-4320)	25.00	BOX
21	Sterilizer Cleaning Brushes (BR-5400)	23.00	EACH
	Sterilizer Cleaning Brushes (BR-5200)	11.00	EACH
	Sterilizer Cleaning Brushes (BR-5210)	20.00	EACH
	Sterilizer Cleaning Brushes (BR-5000)	21.00	EACH
	Sterilizer Cleaning Brushes (BR-5500 - BR-5600)	8.00	EACH
22-23	Sterilization and Instrument Trays	Call	
24	Stringers	Call	
	Autoclave Mitts 13"	13.00	PAIR
	Autoclave Mitts 17"	15.00	PAIR
25	Towel/Utility Clamp (KS-355)	50.00	PKG
	Grip Clip (KS-365)	75.00	PKG
26	Co-Flex - 1" - Assorted colors / Non-sterile	24.00	CASE
	Co-Flex - 2" - Assorted colors / Non-sterile	52.00	CASE
	Co-Flex - 3" - Assorted colors / Non-sterile	43.00	CASE
	Co-Flex - 4" - Assorted colors / Non-sterile	40.00	CASE
	Co-Flex - 6" - Assorted colors / Non-sterile	38.00	CASE
	Co-Flex Tan/Sterile	Call	



KEY SURGICAL'S  
**three easy ways**




# TO ORDER

1 **PHONE** ... (800) 541-7995

2 **FAX** ..... (952) 914-9866

3 **E-MAIL** ... info@keysurgical.com

## Ordering Information & Terms

- No minimum order requirement
- Orders received by 3 pm (CST) will ship the same day
- With our "no risk" return policy, you are free to try our products for 30 days and simply return them if you are not completely satisfied. Some restrictions may apply to sterile products, instruments, and instrument trays.
- All shipments are FOB Eden Prairie, MN
- Terms are NET 30 from date of invoice
- Credit cards accepted   
- All prices are subject to change without notice

## Notes:

---

---

---

---

---

---

---



11000 W. 78th Street, Suite 100 • Eden Prairie, MN 55344  
[www.keysurgical.com](http://www.keysurgical.com)