

FRANCK BOISTEL
FOOTWEAR DESIGNER
DESIGN TEAM LEADER

WORKS



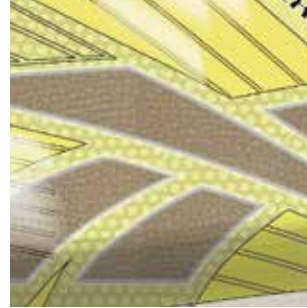
FIVETEN
CANYONEER
CASE STUDY
MY PROCESS



SKETCHING



RENDERINGS



REEBOK CROSSFIT
CASE STUDY



PRODUCTION

FRANCK BOISTEL
FOOTWEAR DESIGNER
DESIGN TEAM LEADER

FIVETEN CANYONEERING

A person is rappelling down a dark, textured rock face. They are wearing a white helmet, a light blue t-shirt, and green camouflage pants. They are holding a rope with their right hand and have various climbing gear attached to their harness, including a green backpack and colorful ropes. The background is a dark, reddish-brown rock wall.

FRANCK BOISTEL
FOOTWEAR DESIGNER
DESIGN TEAM LEADER

SS18 PRODUCT BRIEF



TEARS IN UPPER MESH
AND RANDS



LACING SYSTEM WAS
NOT ERGONOMIC
WEBBINGS BREAK,
EYESTAY WAS NOT
FUNCTIONAL



SEVERE DISCOLORATION



USE OF WEBBING CLOSURE
SYSTEM, PREVIOUS BUCKLES
AND LACES FAILED



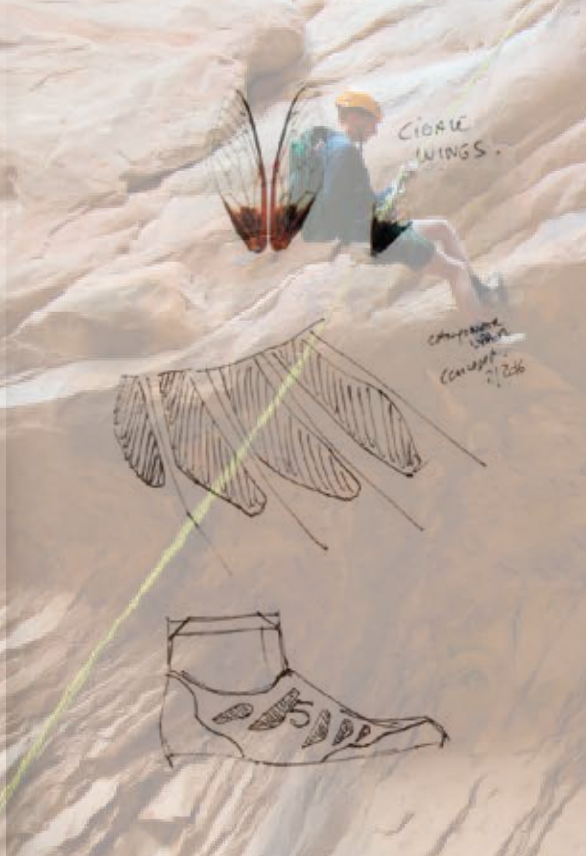
COLLAR MUST BE FLEXIBLE,
KEEPING SAND AND ROCKS
OUT OF THE SHOE



NEW MESH MUST BE DURABLE
AND TIGHT-WOVEN ENOUGH
TO KEEP FINE SAND OUT

FRANCK BOISTEL
FOOTWEAR DESIGNER
DESIGN TEAM LEADER

INSPIRATION



I INSPIRED MOST OF MY ORIGINAL CONCEPTS FROM ELEMENTS OF NATURE THAT I THINK WOULD BE RELEVANT FOR THE DEMANDING TECHNICAL ASPECT OF THE PRODUCT.

- ROCK PATTERNS
- NATURAL ELEMENTS FOR DESIGN
- TEXTURES
- FREE FLOW OF WATER.
- CAGE DESIGN
- FIRST NATION FOOTWEAR.

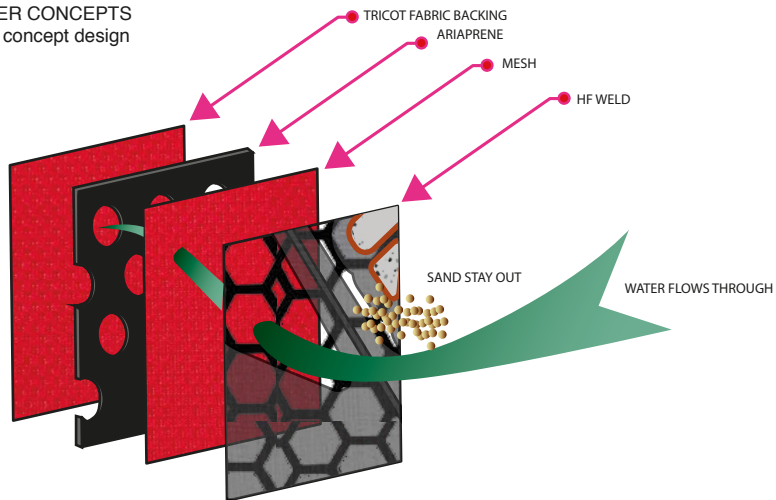


FRANCK BOISTEL
FOOTWEAR DESIGNER
DESIGN TEAM LEADER

CONCEPTS

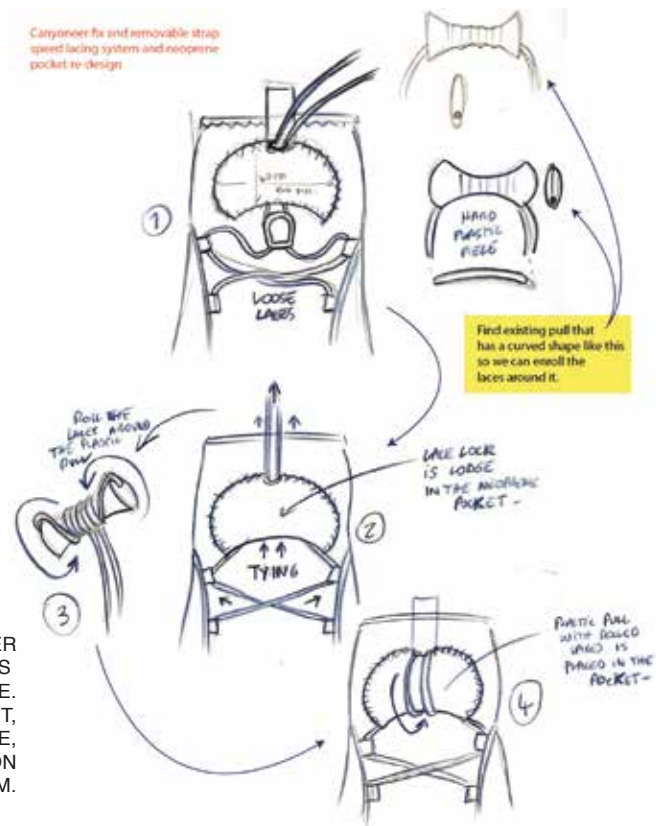
CANYONEER

UPPER CONCEPTS
cage concept design



THE DESIGN OF THE NEW CANYONEER
WOULD NEED TO BE SLICKER THAN THE PREVIOUS
PRODUCED ONE.
WE NEEDED LIGHTER WEIGHT,
BETTER MATERIAL PERFORMANCE,
A BETTER STYLING BASED ON FUNCTION
AS WELL AS A BETTER CLOSURE SYSTEM.

Canyonier fix and removable strap
speed lacing system and neoprene
pocket re-design



FRANCK BOISTEL
FOOTWEAR DESIGNER
DESIGN TEAM LEADER

CONCEPTS



THE CONCEPTS
PRESENTED DIFFERENT
UPPER CLOSURE SYSTEMS
AND STRAPS.
THE CANYONEER NEEDS
TO FEEL SECURE AROUND THE
ANKLE AND LET WATER IN AND
OUT OF THE STRUCTURE.
WE ADOPTED A RPU INJECTED
CAGE OVER A FINE MESH AND
NEOPRENE BOOT.

FRANCK BOISTEL
FOOTWEAR DESIGNER
DESIGN TEAM LEADER

REFINED DIRECTION



FRANCK BOISTEL
FOOTWEAR DESIGNER
DESIGN TEAM LEADER

TECHNICAL WORK



FRANCK BOISTEL
FOOTWEAR DESIGNER
DESIGN TEAM LEADER

FINAL CONFIRMED SAMPLE



FRANCK BOISTEL
FOOTWEAR DESIGNER
DESIGN TEAM LEADER

SKETCHING

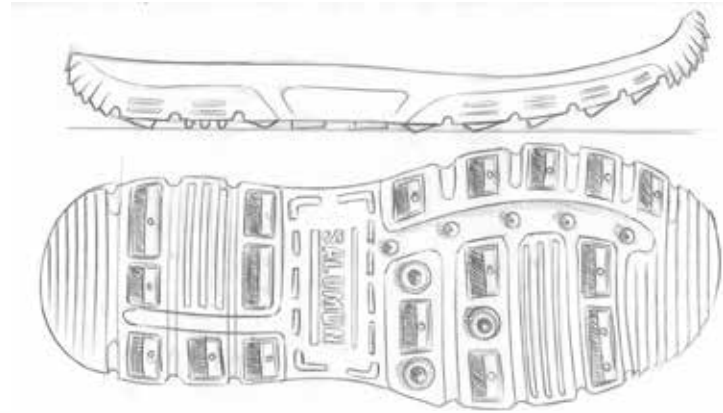
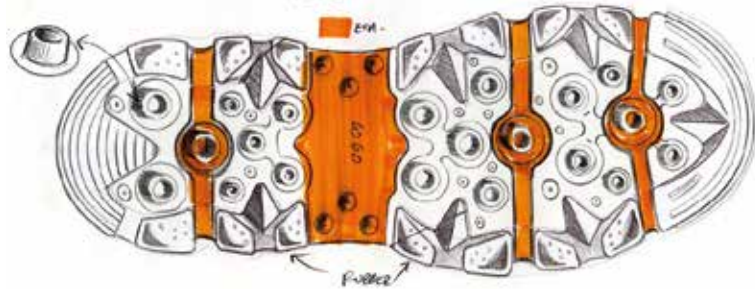


FB



FRANCK BOISTEL
FOOTWEAR DESIGNER
DESIGN TEAM LEADER

SKETCHING



FRANCK BOISTEL
FOOTWEAR DESIGNER
DESIGN TEAM LEADER

RENDERINGS



FIVETEN KESTREL BOA XC FW18 CONCEPT

FRANCK BOISTEL
FOOTWEAR DESIGNER
DESIGN TEAM LEADER

RENDERINGS



FIVETEN KESTREL BOA XC FW18 CONCEPT

FRANCK BOISTEL
FOOTWEAR DESIGNER
DESIGN TEAM LEADER

RENDERINGS



FIVETEN CANYONEER SS18 SKETCH RENDERING FROM SAMPLE

FRANCK BOISTEL
FOOTWEAR DESIGNER
DESIGN TEAM LEADER

RENDERINGS



FREE RENDERING STUDY FOR AN ADIDAS RUNNING STYLE. UTILIZING THE THREE STRIPES ELEMENTS

FRANCK BOISTEL
FOOTWEAR DESIGNER
DESIGN TEAM LEADER

OTHER FIVETEN REALIZATIONS

KESTREL BOA V2
PERFORMANCE CLIPLESS
MOUNTAIN BIKING



HALF DOME
(CAMP FOUR REPLACEMENT)
PERFORMANCE
OUTDOOR CLIMBING

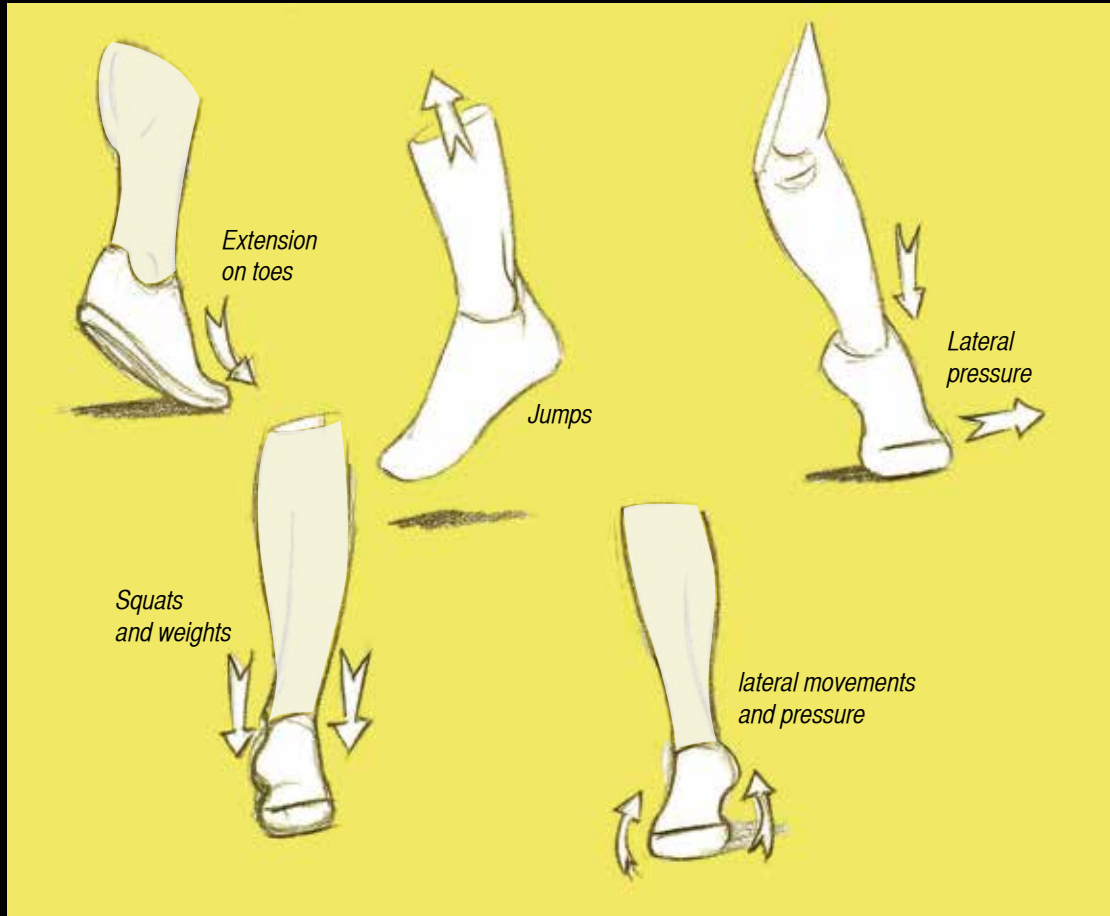




REEBOK CROSSFIT CONCEPT
SOLAR FLEX W.O.
CONCEPTS

A Crossfit footwear study

FRANCK BOISTEL
FOOTWEAR DESIGNER
DESIGN TEAM LEADER

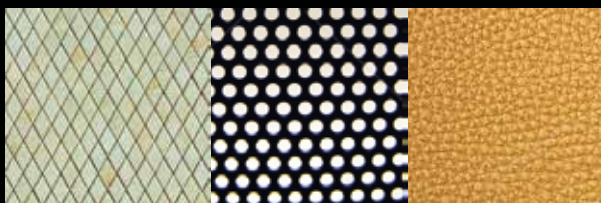


This concept for a cross-fit footwear style is addressing:

- Mobility
- Cushioning
- Support
- Lightweight
- Torsion
- Traction
- Lo profile
- Protection
- Shelf appeal
- Branding

SOLAR FLEX W.O.

FRANCK BOISTEL
FOOTWEAR DESIGNER
DESIGN TEAM LEADER



Textures
Yellow
Golden
Strength
Luminous
Lightweight
Strong
Intricate
Friendly



Bridge
Balance
Shapes
Structure
Bold
Cables
Armor
Power
Victory...

SOLAR FLEX W.O.

FRANCK BOISTEL
FOOTWEAR DESIGNER
DESIGN TEAM LEADER



Preliminary concept addressing ergonomics, rpu injection for torsion, mobility support and protection.

SOLAR FLEX W.O.

FRANCK BOISTEL
FOOTWEAR DESIGNER
DESIGN TEAM LEADER



SOLAR FLEX W.O.

FRANCK BOISTEL
FOOTWEAR DESIGNER
DESIGN TEAM LEADER



SOLAR FLEX W.O.

FRANCK BOISTEL
FOOTWEAR DESIGNER
DESIGN TEAM LEADER

DIGGING UP THE PAST



IN 2010, I RE-DESIGNED AND LAUNCH A COLLECTION OF A VERY BEAUTIFUL AND HISTORIC SANDAL DESIGNED BY AZTEC PEOPLE 700 YEARS AGO AND THAT DISAPPEARED. I DECIDED TO HAVE IT MADE AGAIN IN MEXICO AND TEST THE MARKET. THE RESPONSE WAS GREAT BUT I DIDN'T FIND THE NECESSARY FUNDING TO CONTINUE THE ADVENTURE. THE AZTEC SANDAL IS A VERY VERSATILE SANDAL MADE FOR WALKING AND RUNNING

FRANCK BOISTEL
FOOTWEAR DESIGNER
DESIGN TEAM LEADER

LIFESTYLE



IN 2011, KEVIN FLANAGAN AND MARK WYSTRACH OF THE PEOPLE'S MOVEMENT
ASKED ME TO HELP THEM DESIGN THE COLLECTIONS FOR THEIR NEW BRAND.

"THE PEOPLE'S MOVEMENT WAS BORN FROM THE DESIRE TO CREATE SHOES AND ACCESSORIES FOR FRIENDS THAT REFLECTED
OUR PASSION FOR CLEAN DESIGN... AND A CLEAN ENVIRONMENT.
MOVEMENT IS DRIVEN TO BE THE POSITIVE CHANGE WE WANT TO SEE IN THE WORLD".

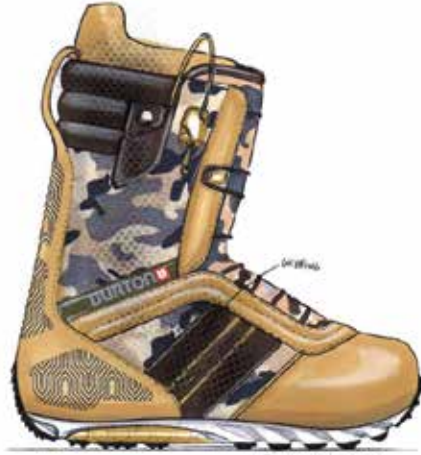


FRANCK BOISTEL
FOOTWEAR DESIGNER
DESIGN TEAM LEADER

SNOWBOARDING



BURTON 2008 - POACHER



ELISA CAMO - 08



BURTON 2009 - RULER



FLOW 2010 - CONCEPT

I STARTED DESIGNING SNOWBOARD BOOTS IN 1998 FOR THIRTY-TWO AT SOLE TECHNOLOGY.
SNOWBOARD BOOTS HAVE ALWAYS BEEN FOR ME A BREATH OF FRESH AIR
AS THE DIMENSIONS, VOLUMES AND AESTHETIC BALANCE ARE VERY DIFFERENT FROM A SHOE.
TO THIS DAY, A PLEASURE TO DESIGN.



FRANCK BOISTEL
FOOTWEAR DESIGNER
DESIGN TEAM LEADER

CHROME BAGS FOOTWEAR



FROM SLIP-ONS TO URBAN HIKERS, CHROME BUILD ALL OF ITS SNEAKERS TO STAND UP TO ALL KINDS OF ABUSE WHILE STAYING STYLISH ENOUGH TO KICK IT HARD IN THE OFFICE OR AT THE BAR. CLASSIC SNEAKS FOR CITY STREETS.

FRANCK BOISTEL
FOOTWEAR DESIGNER
DESIGN TEAM LEADER

SKATEBOARDING



FROM 1997 TO 2005, AS A LEAD FOOTWEAR DESIGNER AT SOLE TECHNOLOGY
I WAS PRIVILEGE TO WORK IN ONE OF THE MOST ECONOMICALLY VIABLE TIMES FOR SKATEBOARDING FOOTWEAR
AND TO BE AT THE FOREFRONT OF THE FOOTWEAR DESIGN OF ALL BRANDS OF THE COMPANY
IN LATE 2005 I STARTED DESIGNING AND DEVELOPPING ALL FOOTWEAR FOR IPATH UNTIL 2009.

FRANCK BOISTEL
FOOTWEAR DESIGNER
DESIGN TEAM LEADER

DUNLOP



DUNLOP IS A "CLASSIC" BRAND FOCUSED ON PERFORMANCE & INNOVATION",
WITH A STRONG HISTORY IN GOLF, TENNIS, SQUASH, FORMULA 1.
DUNLOP IS ABOUT WINNING WORLD CLASS CONTESTS.

I HAVE BEEN CONTRACTED IN 2012 TO PROVIDE A NEW VISION FOR THE PRODUCT.

FRANCK BOISTEL
FOOTWEAR DESIGNER
DESIGN TEAM LEADER

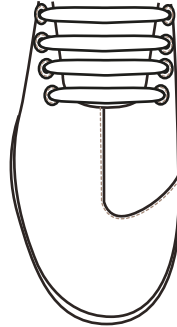
ADIDAS SKATEBOARDING

CONCEPT

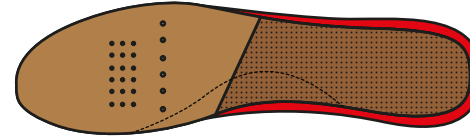
AN ASYMMETRICAL
UPPER AND OUTSOLE
DESIGN USING BOOST

A TIMELESS
STREETSTYLE/LIFESTYLE
DESIGN BASED ON
FUNCTION
QUALITY
CREATIVITY
MATERIALS
AND EXECUTION.

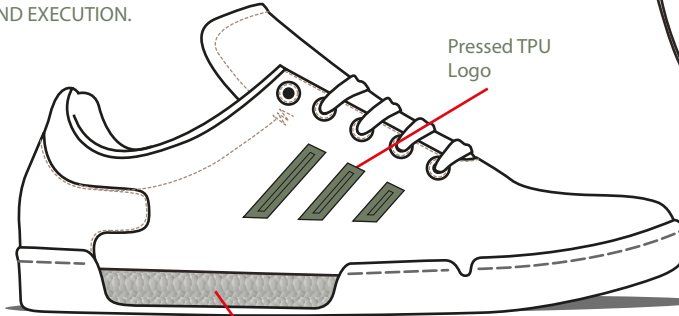
Leather upper
Asymmetrical upper
pattern



Tip of laces



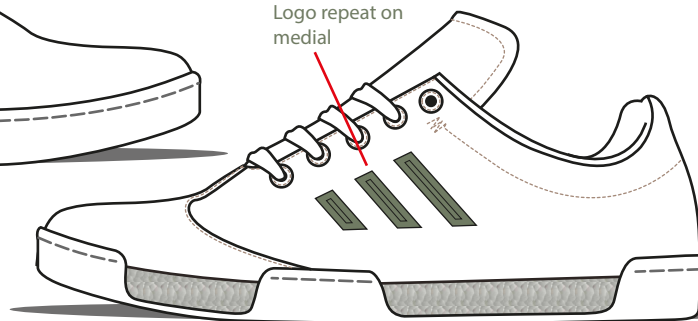
leather covered insole
dual density EVA. Micro perfs
Eva contour (red) for comfort .



Lateral

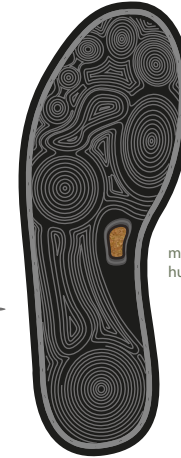
Boost midsole

Pressed TPU
Logo



Logo repeat on
medial

Medial



mega grip outsole
human foot inspiration



SOUTHERN CALIFORNIA HOMES

DRAWINGS



COSTUME DESIGN

LUC BESSON 2017 FEATURE: VALERIAN



FOR THE FULL EXTENT OF MY WORK PLEASE VISIT:

WWW.COROFLOT.COM/FRANCKB



[HTTPS://WWW.BEHANCE.NET/FBDESIGN](https://WWW.BEHANCE.NET/FBDESIGN)



FRANCK BOISTEL
FOOTWEAR DESIGNER
DESIGN TEAM LEADER

Thank you!



FRANCK BOISTEL
franck.boistel@gmail.com
(01)949 233 3846