

Mavi

STYLE NO:	WLT101	DESCRIPTION:	Women's Ribbed Crop Top	FABRIC REF:	WLT101
DATE:	28/07/25	FABRIC COMP:	Ribbed Cashmere 140gsm	SUPPLIER:	MSS
SEASON:	FALL 2025	COLOUR:	2	SAMPLE SIZE:	MEDIUM

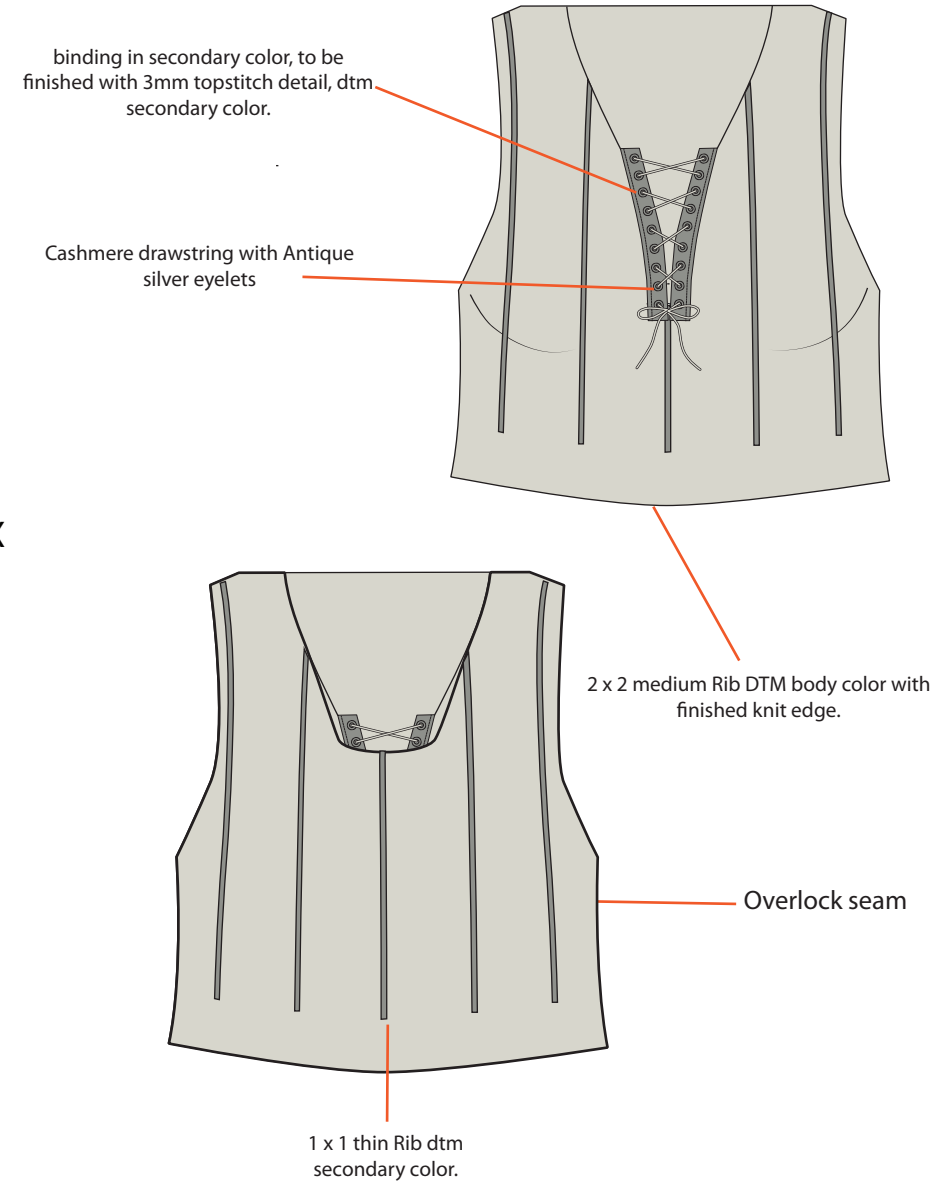
GARMENT DETAILS

Colorway 01:

- Body Fabric: PANTONE Sky Cool Grey 11-0027 TCX
- Secondary Color: PANTONE MED Ash Grey 13-0117 TCX
- Drawstring: PANTONE Sky Cool Grey 11-0027 TCX
- Stitch Color 1: PANTONE Sky Cool Grey 11-0027 TCX
- Secondary Stitch Color: PANTONE MED Ash Grey 13-0117 TCX

Colorway 02:

- Body Fabric: PANTONE Banana Cream 01-5511 TCX
- Secondary Color: PANTONE Burnt Yellow 01-5519 TCX
- Drawstring: PANTONE Banana Cream 01-5511 TCX
- Stitch Color 1: PANTONE Banana Cream 01-5511 TCX
- Secondary Stitch Color: PANTONE Burnt Yellow 01-5519 TCX



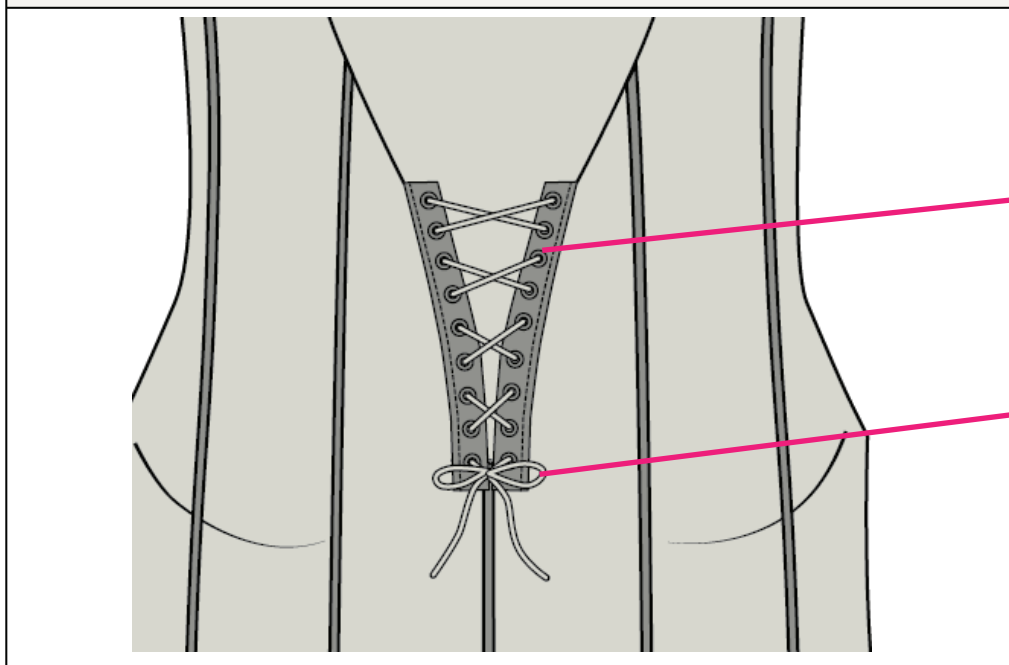
© Copyright 2023. All rights reserved.

Mavi

STYLE NO:	WLT101	DESCRIPTION:	Women's Ribbed Crop Top	FABRIC REF:	WLT101
DATE:	28/07/25	FABRIC COMP:	Ribbed Cashmere 140gsm	SUPPLIER:	MSS
SEASON:	FALL 2025	COLOUR:	2	SAMPLE SIZE:	MEDIUM

CONSTRUCTION DETAILS

Drawstring and eyelet



Unbranded silver eyelets. See reference Images.

Drawstring To match body color in secondary fabric.

Binding secondary color and fabric. See Reference

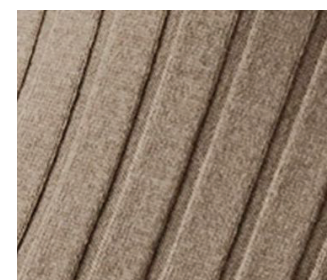
Eyelet & secondary fabric Reference



Size Spec: Ribbed Crop Top

SIZE SPEC TOP	SIZE M	CM
Length from SNP to Hem Front		34
Across front, 15cm down from SNP		30
Across front, 2.5cm below underarm		30
Hem straight at seam		26

Body and Secondary Fabric Reference



Ribbed Cashmere 140gsm



Plain Cashmere 160gsm

© Copyright 2023. All rights reserved.