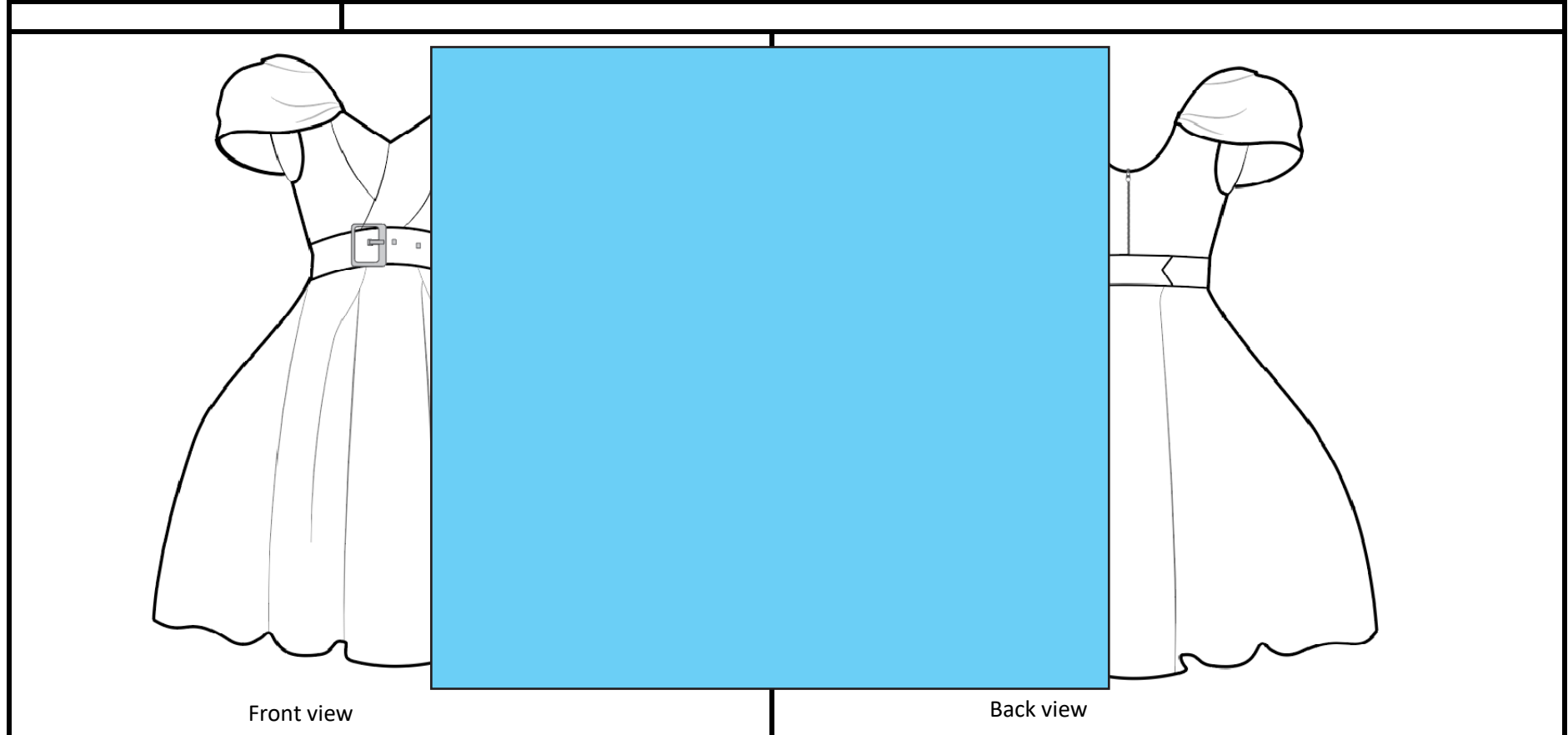


Statement Sleeve Dress - Daughter

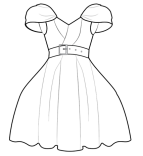


Sub title:	Statement Sleeve Dress - Daughter	Size Range on Product:	12Months,2T,3T,4T,5T
Product	Dress	Comments:	Production Techpack
Generic Article	1	Product Status:	Production sample
Season Name:		Vendor Name:	

Design Proto Number	1	Material info	100% Polyester Lattice applique dress, Satin lining
Lifestyle		Created by :	Sasindu
Description	Final view of the garment	Designer	
Sector		Technical Designer	
Color range		Modified Date	2/25/2021 - Updated grading
Product Season		Modified By	Sasindu

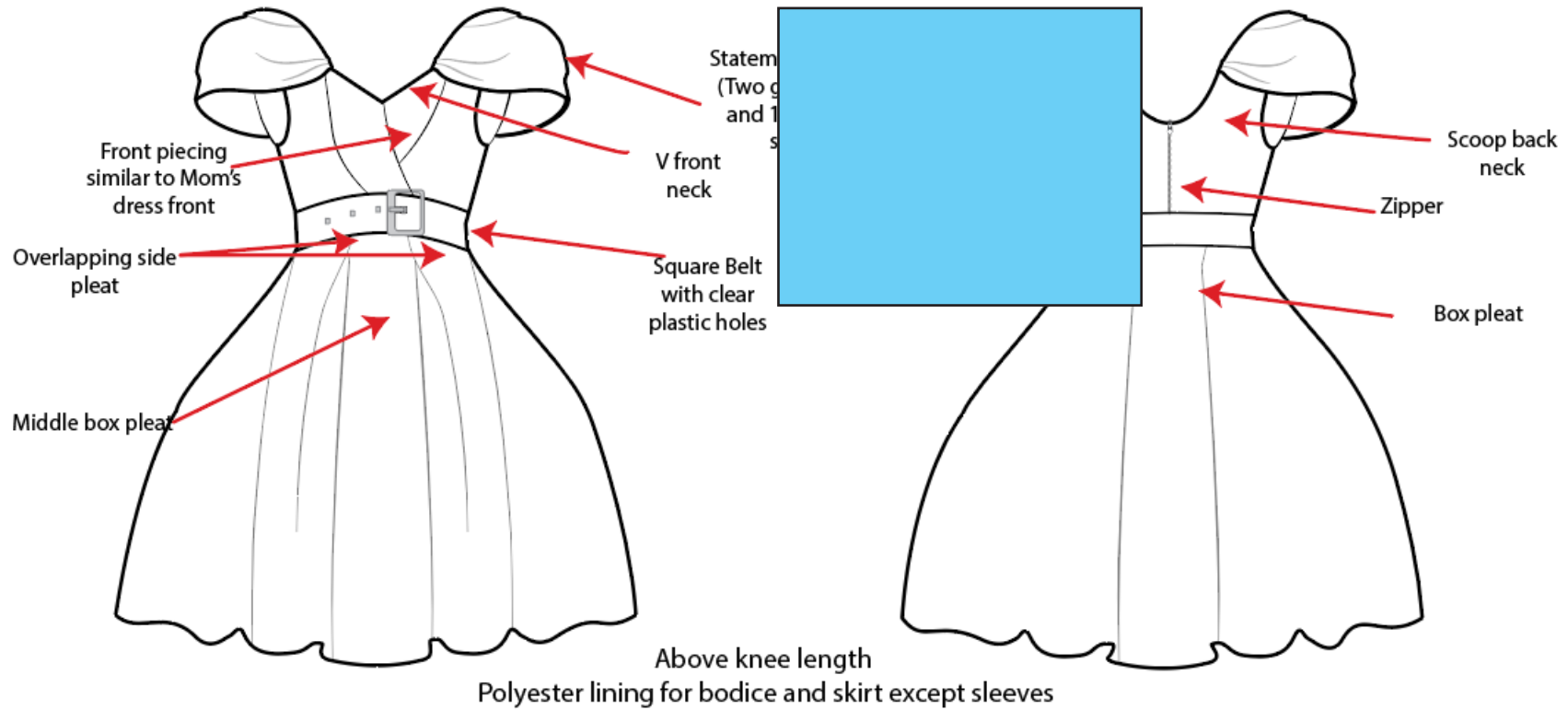


Statement Sleeve Dress - Daughter



Sub title:	Statement Sleeve Dress - Daughter	Size Range on Product:	12Months,2T,3T,4T,5T
Product	Dress	Comments:	Production Techpack
Generic Article	1	Product Status:	Production sample
Season Name:	0	Vendor Name:	0

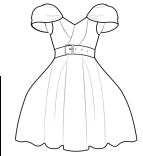
Description	Garment construction	Created By	Sasindu	Modified By	Sasindu	UOM	Inches
Approval Status	Production sample						



Front



Back

Statement Sleeve Dress - Daughter



Sub title:	Statement Sleeve Dress - Daughter	Size Range on Product:	12Months,2T,3T,4T,5T
Product	Dress	Comments:	Production Techpack
Generic Article	1	Product Status:	Production sample
Season Name:	0	Vendor Name:	0

Description	Measurement chart	Created By	Sasindu	Modified By	Sasindu	UOM	Inches
Approval Status	Production sample						

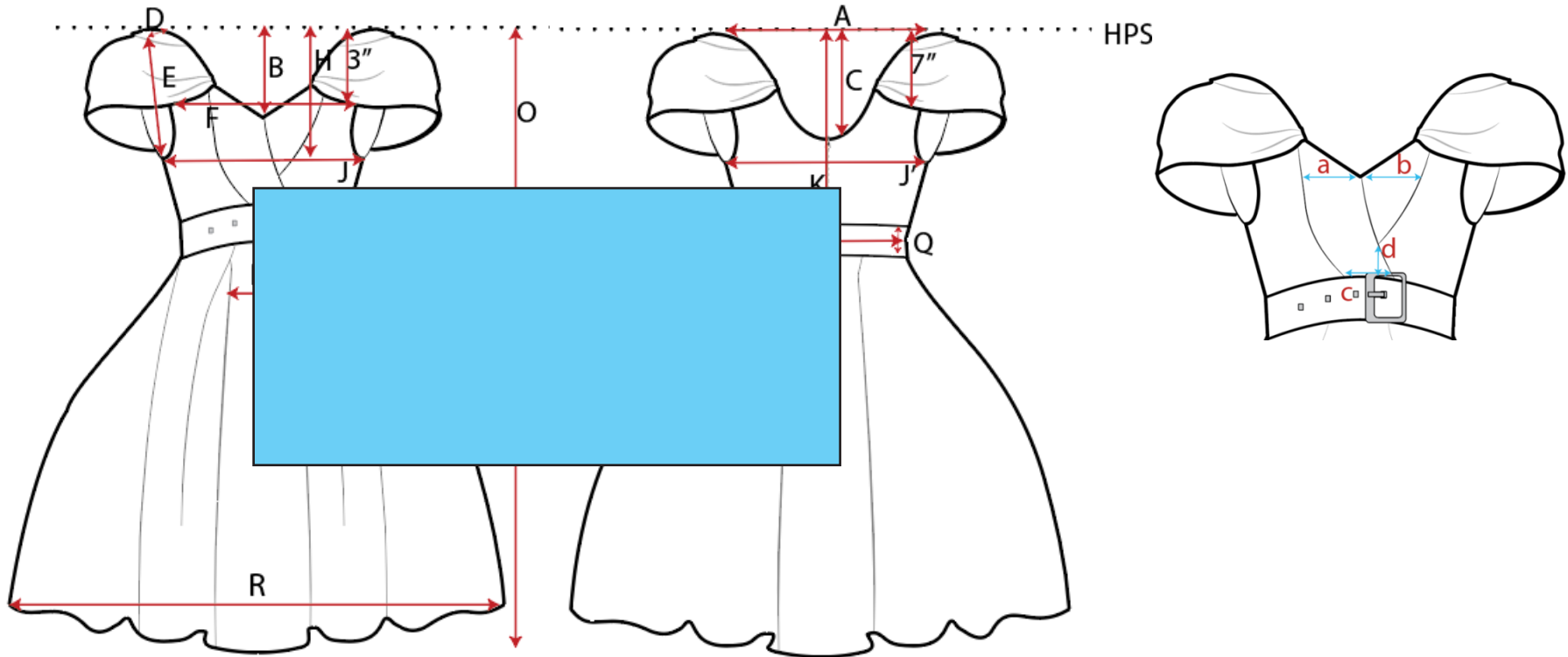
Item	Placement	Composition	GSM	Remarks	Color	Image
DTY Scuba Fabric	Body outer	5% Spandex	280		Light Purple	 <p><b>Polyester Spandex DTY Scuba Fabric, Knitted Air Layer Fabric, Fabric Polyester Scuba for Dress</b></p> <ul style="list-style-type: none"> <li>polyester3%spandex</li> <li>100cm adjustable</li> <li>160cm adjustable</li> <li>double side plain(double jersey)</li> <li>anti-customizable</li> <li>lined with paper tube inside and outside bag outside,or according to clients' requirement</li> <li>off knit</li> <li>T.L.C</li> <li>days as usual</li> <li>ring in.Mazer,lingerie,dress,tops,leggings</li> <li>100kgs/20GP</li> <li>Hangzhou,Zhejiang Province</li> </ul>
Satin fabric	Lining	100% Polyester	85		DTM to body fabric	
Zipper	Center back			Invisible	DTM to body fabric	
Square buckle	Belt at CF	Metal square		The shape must be a	DTM to body fabric	
Belt holes	Belt holes	Plastic			Clear	

Statement Sleeve Dress - Daughter



Sub title:	Statement Sleeve Dress - Daughter	Size Range on Product:	12Months,2T,3T,4T,5T
Product	Dress	Comments:	Production Techpack
Generic Article	1	Product Status:	Production sample
Season Name:	0	Vendor Name:	0

Description	Point of measurements	Created By	Sasindu	Modified By	Sasindu	UOM	Inches
Approval Status	Production sample						



Front

Back

Statement Sleeve Dress - Daughter



Sub title:	Statement Sleeve Dress - Daughter	Size Range on Product:	12Months,2T,3T,4T,5T
Product	Dress	Comments:	Production Techpack
Generic Article	1	Product Status:	Production sample
Season Name:	0	Vendor Name:	0

Description	Raw Material details	Created By	Sasindu	Modified By	Sasindu	UOM	Inches
Approval Status	Production sample						

Code	POM Description	Tol(+/-)	12M	2T	3T	4T	5T
A	Neck width						10
B	Front Neck depth from HPS						1/4
C	Back Neck depth from HPS						1/2
D	Shoulder strap width						1/4
E	Armhole straight from LPS to armhole pit						6
F	Across front armhole width 3" below HPS						10
H	Chest height from HPS						3/8
J	Chest at front						3/4
J'	Chest at back						3/4
K	HPS to waist height						5/8
L	Waist at back						1/4
O	Total height						1/2
P	Box pleat width						3
Q	Belt height						1/4
R	Sweep						1/2
	Belt length						33
<b>Princess seam measurements</b>							
a	Center front neck to front seam at wearer's right	1/8					
b	Center front neck to front seam at wearer's left	1/8					
c	End of front seam to waist seam	1/8					
d	Front seam width along waist seam	1/8	1	1/8	1	1/4	1
							3/8
							1/2
							5/8

Statement Sleeve Dress - Daughter



Sub title:	Statement Sleeve Dress - Daughter	Size Range on Product:	12Months,2T,3T,4T,5T
Product	Dress	Comments:	Production Techpack
Generic Article	1	Product Status:	Production sample
Season Name:	0	Vendor Name:	0

Description	Embellishments - Logo	Created By	Sasindu	Modified By	Sasindu	UOM	Inches
Approval Status	Production sample						

Text Font : Anaktoria Regular - Size 22.5 point

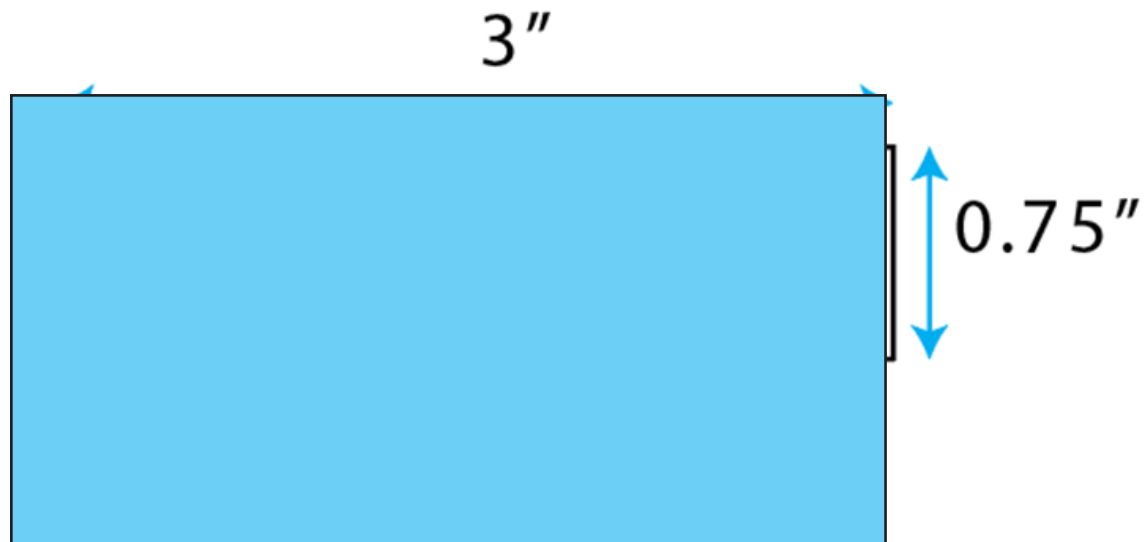
Size font : Bahnschrift Regular - Size 25 point

Text in Black color

Background in White

Care label material - 100% Polyester

Placement - Center back neck line



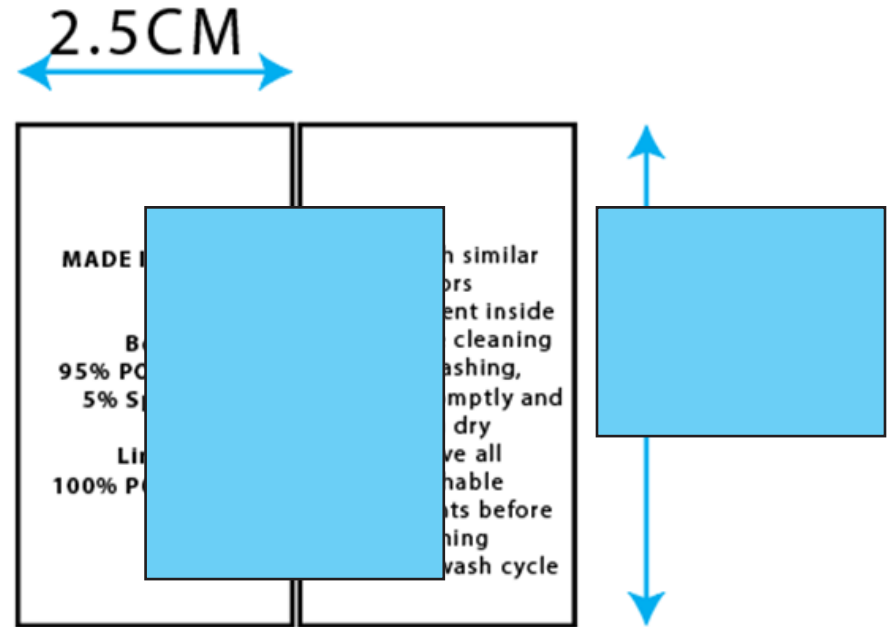
Statement Sleeve Dress - Daughter



Sub title:	Statement Sleeve Dress - Daughter	Size Range on Product:	12Months,2T,3T,4T,5T
Product	Dress	Comments:	Production Techpack
Generic Article	1	Product Status:	Production sample
Season Name:	0	Vendor Name:	0

Description	Embellishments - Care Label	Created By	Sasindu	Modified By	Sasindu	UOM	Inches
Approval Status	Production sample						

Font : Myriad Pro 6 point  
 Text in Black color  
 Background in White  
 Size - 2.5cm X 4.5 cm  
 Care label material - 100% Polyester  
 Placement - 3" below waist left side seam



**Actual size artwork**

Statement Sleeve Dress - Daughter



<b>Sub title:</b>	Statement Sleeve Dress - Daughter	<b>Size Range on Product:</b>	12Months,2T,3T,4T,5T
<b>Product</b>	Dress	<b>Comments:</b>	Production Techpack
<b>Generic Article</b>	1	<b>Product Status:</b>	Production sample
<b>Season Name:</b>	0	<b>Vendor Name:</b>	0

<b>Description</b>	<b>Comments for samples</b>	<b>Created By</b>	Sasindu	<b>Modified By</b>	Sasindu	<b>UOM</b>	<b>Inches</b>
<b>Approval Status</b>	Production sample						

Date	Sample	Comment
16-Dec	Development sample 1	Adjust the measurements according to new measurement chart
		The belt buckle shape should be a square
		Shape the princess seam according to the sketch and the measurements given
		Change the belt holes to clear plastic
2/25/2020	Development sample 2	Sample approved for size 4T. Follow the mmt chart for production for all sizes.