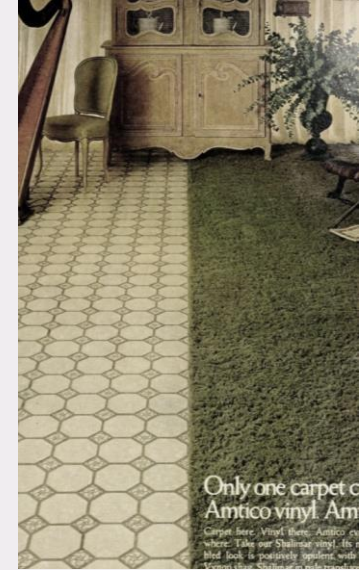


Late Company by Jordan Tannahill

DESIGNED BY Fernanda Souza

PRESENTED AT THE Ryerson Theatre

PROJECT 1 FINAL: Research, Sketch, Model, GP
THT 318

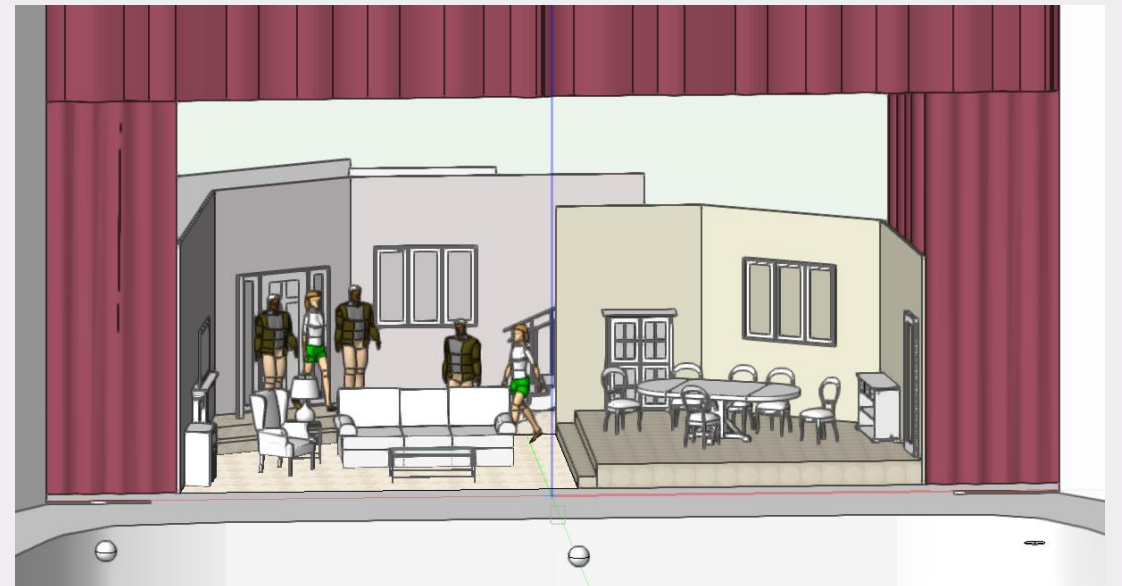
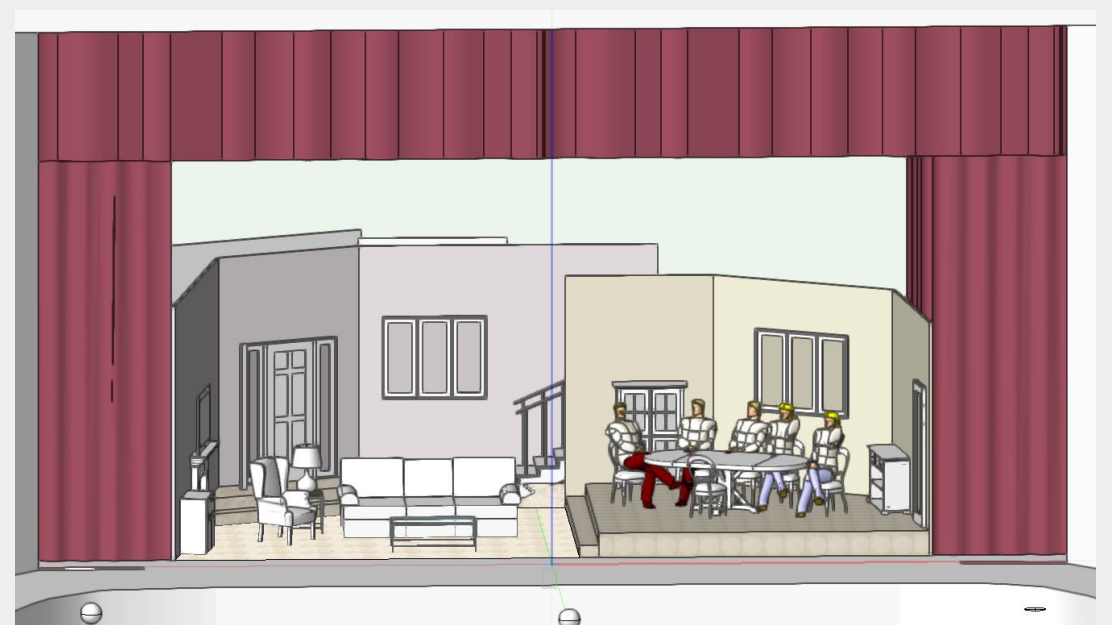
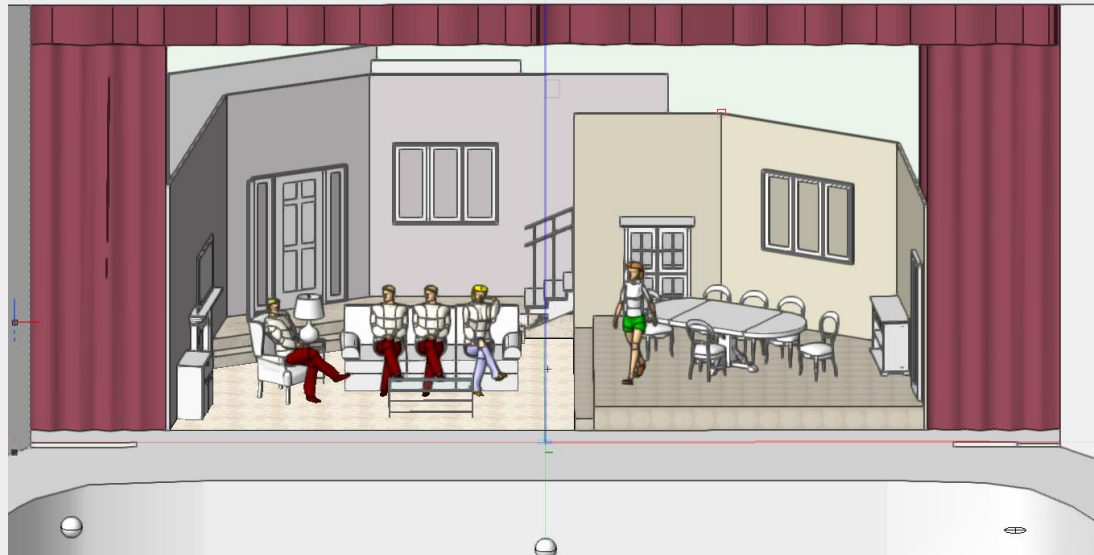


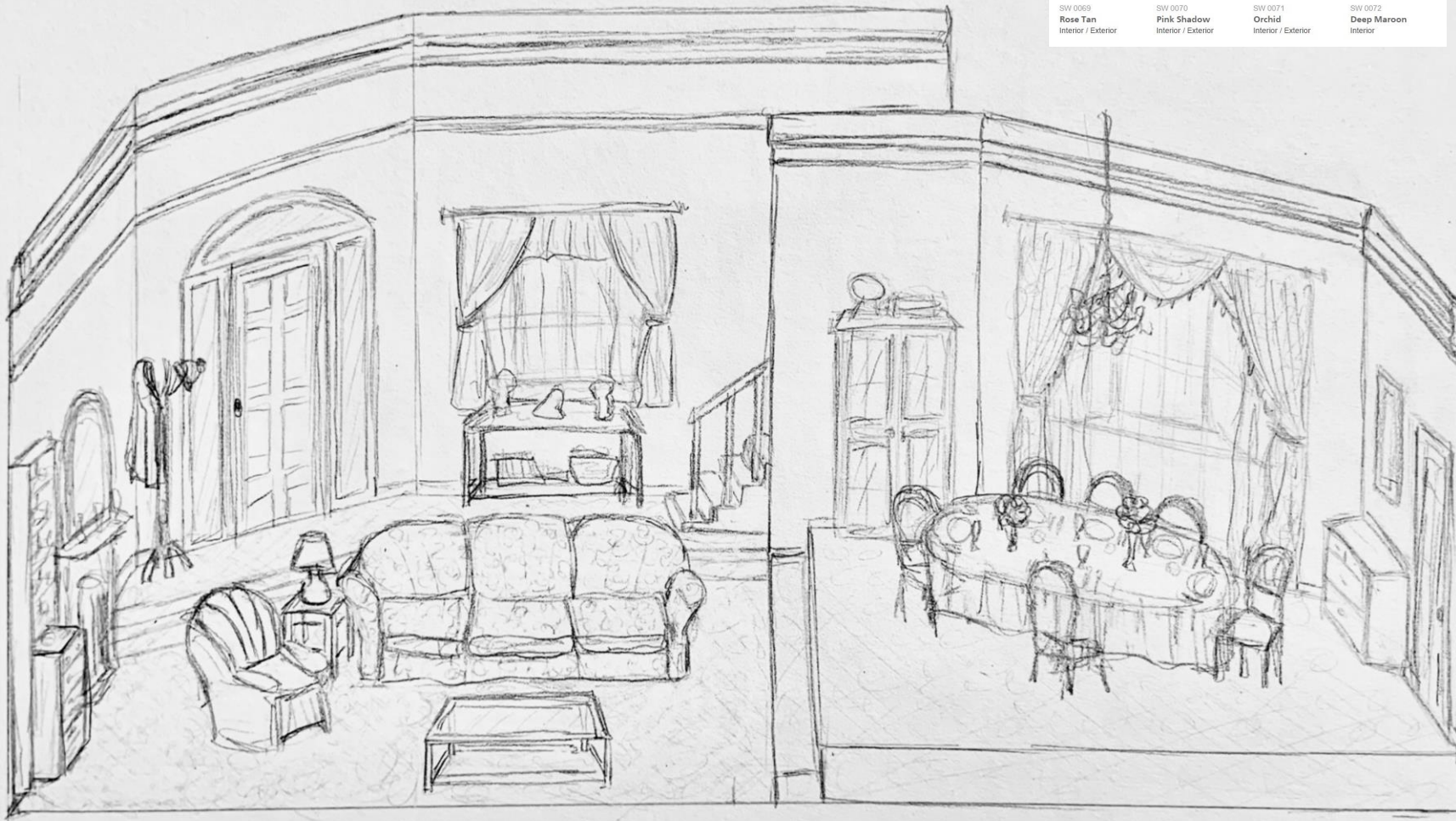
- Set in the mid 80s
- An upper-middle-class suburban home
- Shabby chic with art deco elements
- Pastel walls
- Chintz florals for soft goods
- Gilt accented furniture
- Fireplace and mantelpiece
- Shag carpeting in living area
- Vinyl floor in dining area
- Honey oak furniture

			
SW 0065 Vogue Green Interior / Exterior	SW 0066 Cascade Green Interior / Exterior	SW 0067 Belvedere Cream Interior / Exterior	SW 0068 Copen Blue Interior / Exterior
			
SW 0069 Rose Tan Interior / Exterior	SW 0070 Pink Shadow Interior / Exterior	SW 0071 Orchid Interior / Exterior	SW 0072 Deep Maroon Interior

- Entertainment centre
- Formal place setting and tableware
- University pennant
- Memory box
- Metal work sculptures
- Full drapes with ribbon detail
- Honey oak furniture







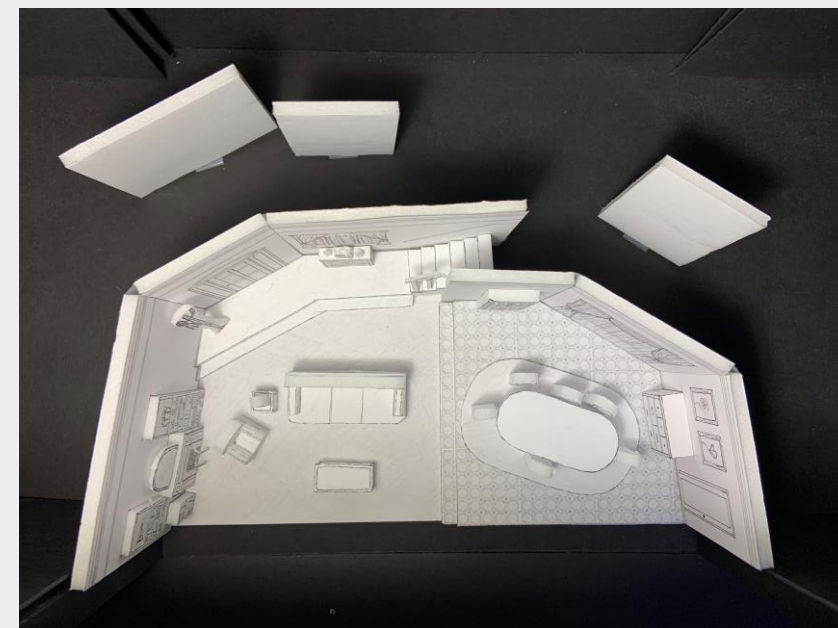
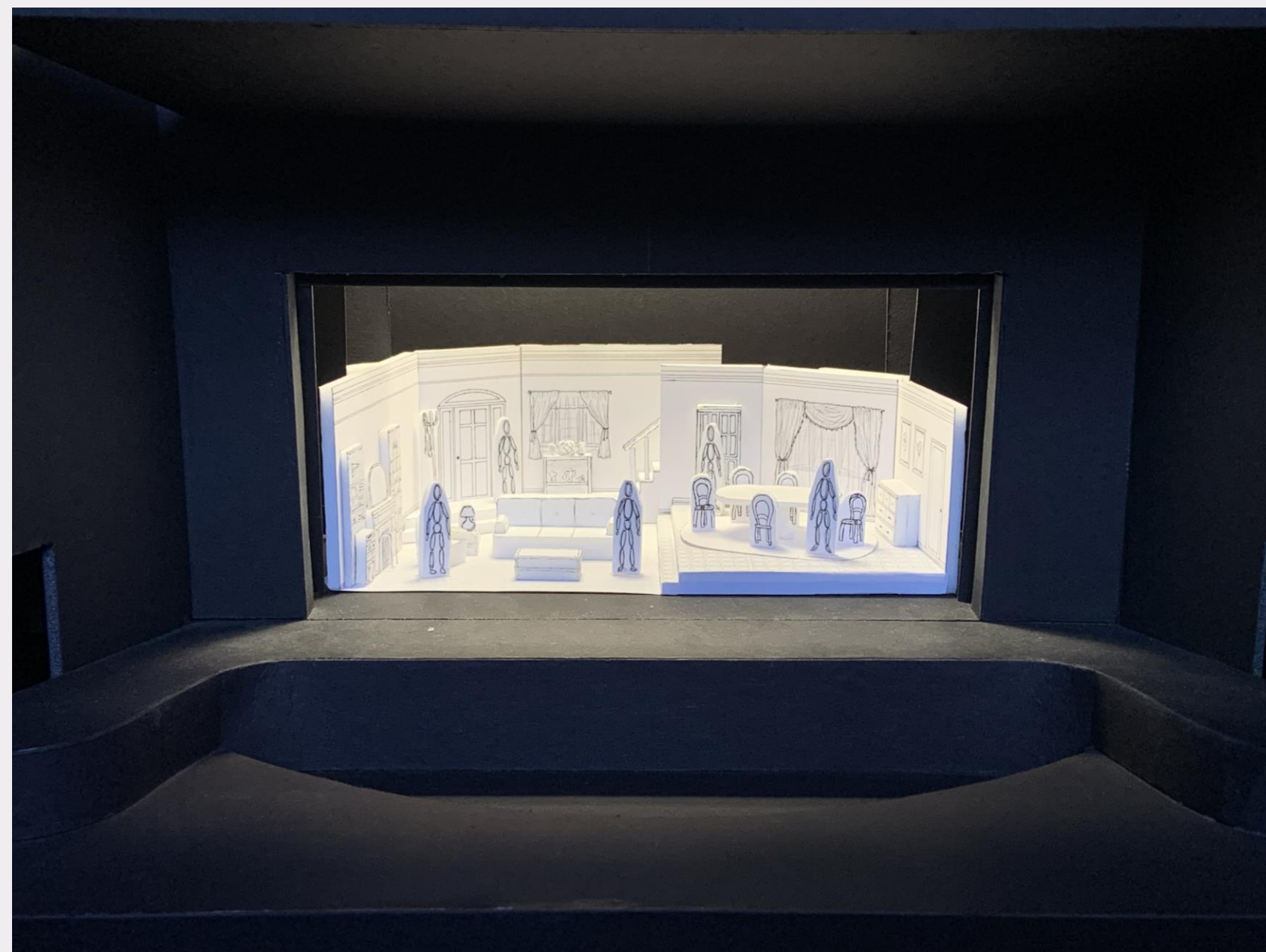
			
SW 0065 Vogue Green Interior / Exterior	SW 0066 Cascade Green Interior / Exterior	SW 0067 Belvedere Cream Interior / Exterior	SW 0068 Copen Blue Interior / Exterior
			
SW 0069 Rose Tan Interior / Exterior	SW 0070 Pink Shadow Interior / Exterior	SW 0071 Orchid Interior / Exterior	SW 0072 Deep Maroon Interior

Notes:

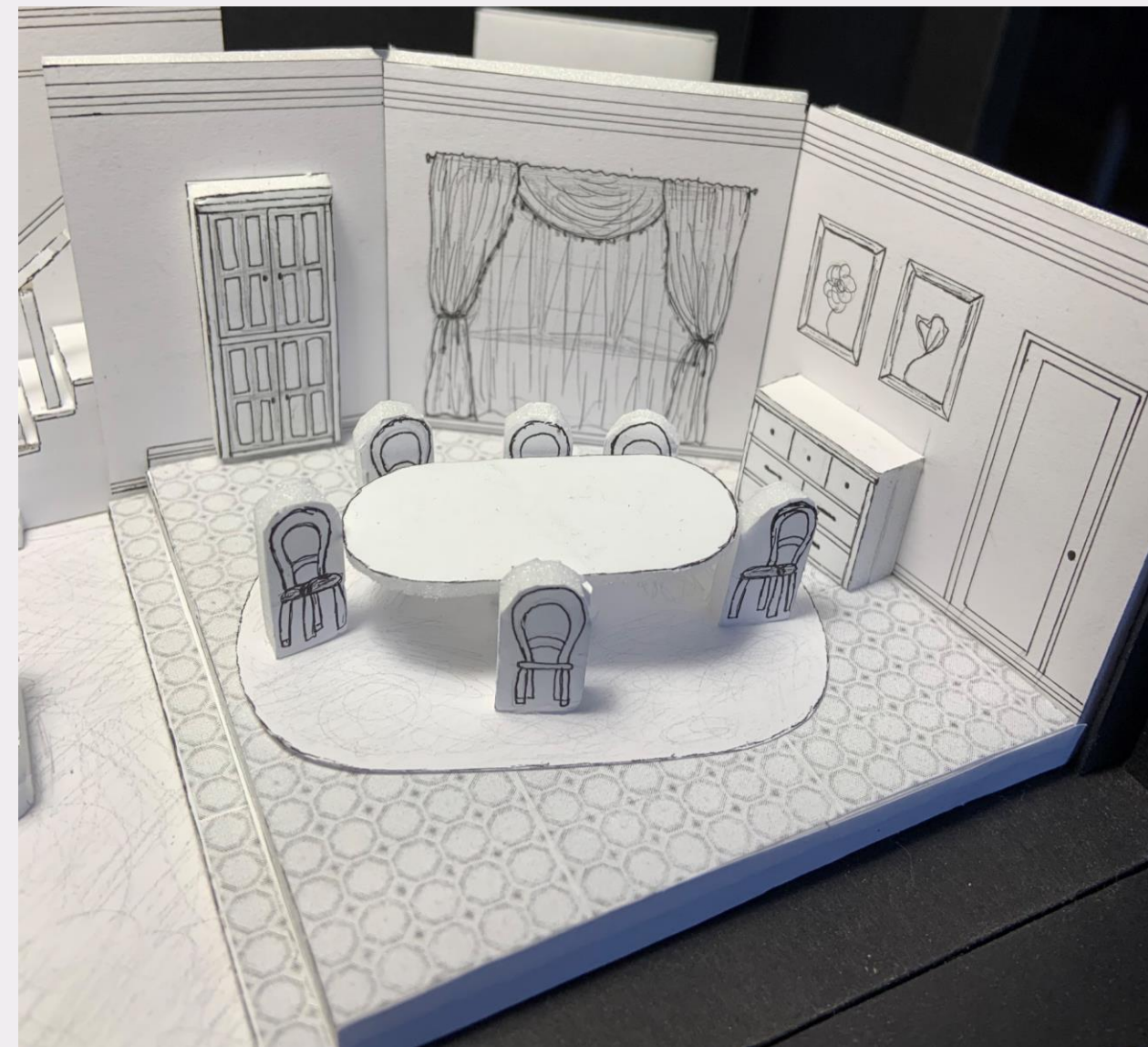
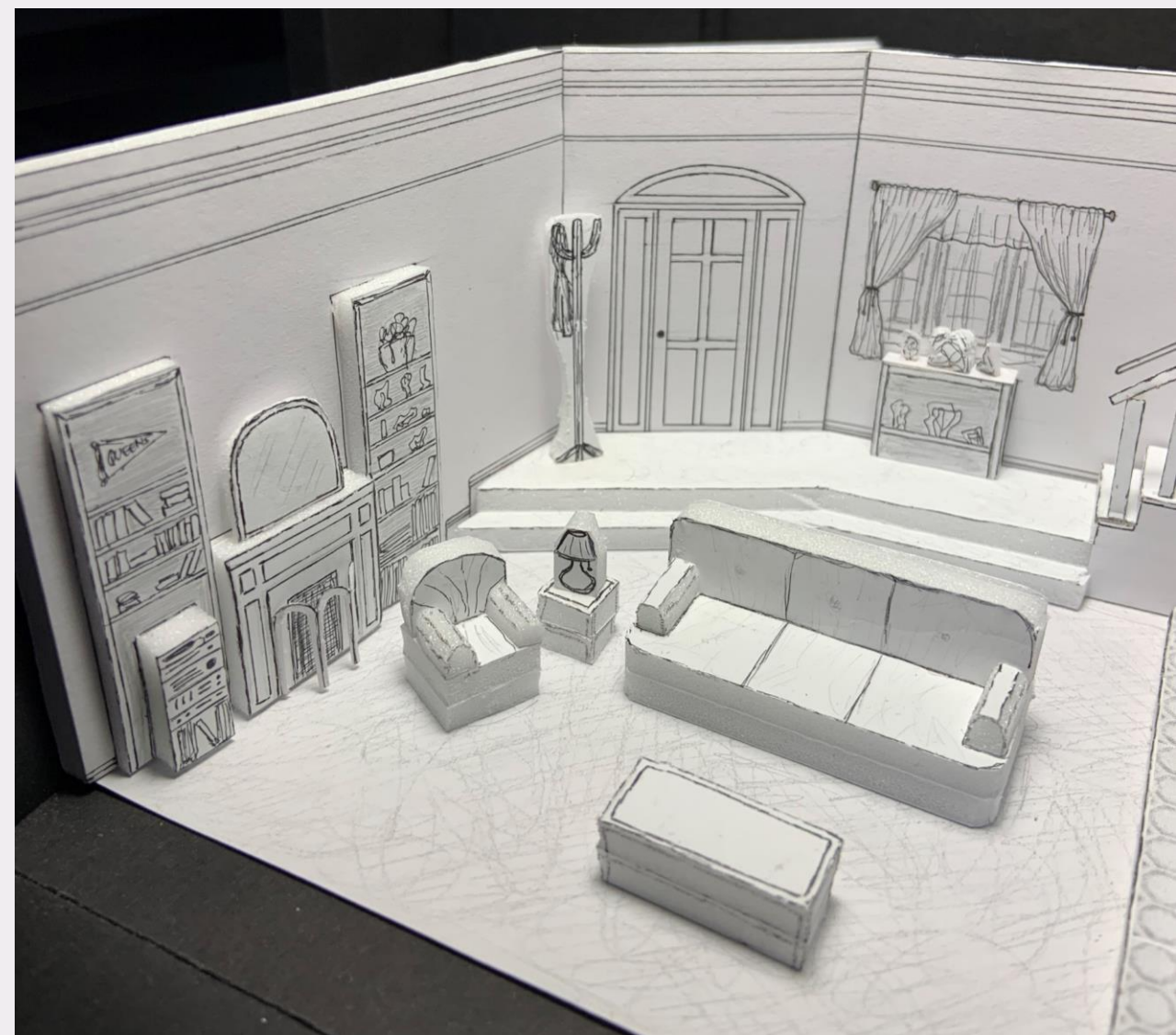
- Open concept
- Elevated dining area
- SL door to kitchen offstage
- Staircase
- Fireplace and entertainment centre unit in living room
- Coat Hanger
- Display table for Debora's sculptures
- Some chintz for soft goods
- Art deco gold details
- Drawers unit in dining room for letters and memory box
- Chandelier

White Model - Overview

Scale: $\frac{1}{4}" = 1'-0"$



White Model - Details



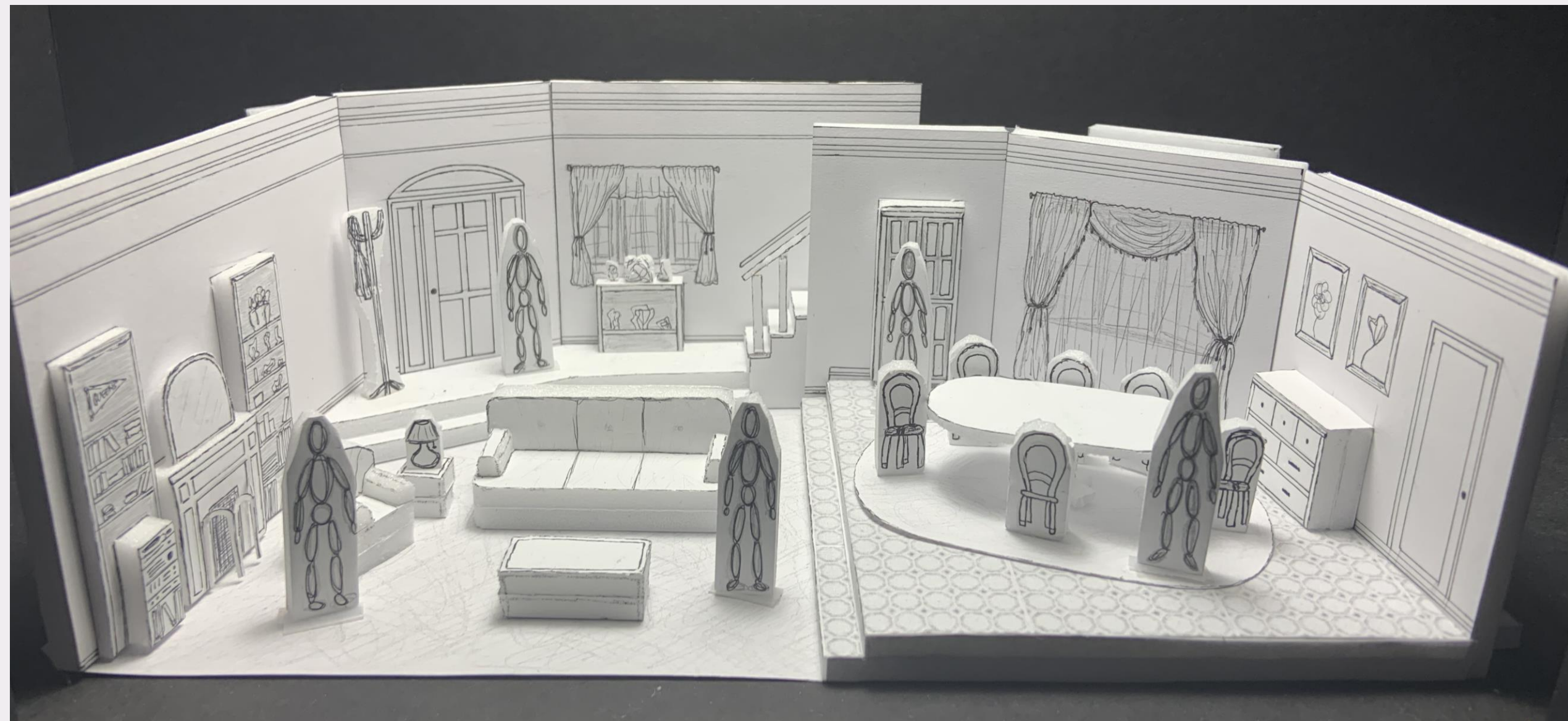
White Model



White Model



White Model



This floor plan shows a two-room house with a total width of 34'-10 1/8" and a total depth of 25'-9". The left room, measuring 18'-11" wide by 15'-3" deep, contains a fireplace, bookshelf, stereo, coat hanger, and a table. The right room, measuring 16'-5 3/8" wide by 10'-6" deep, contains a cabinet, a large oval table, and drawers. A central staircase is labeled "Stairs not functional". The plan includes various dimensions for furniture and architectural features, as well as elevation markers (+0", +7", +14").

Room Dimensions:

- Left Room: 18'-11" wide, 15'-3" deep
- Right Room: 16'-5 3/8" wide, 10'-6" deep
- Total Width: 34'-10 1/8"
- Total Depth: 25'-9"

Furniture and Features:

- Left Room:** Fireplace, Bookshelf, Stereo, Coat Hanger, Table, Carpet.
- Right Room:** Cabinet, Large Oval Table, Drawers, Vinyl flooring.
- Central:** Stairs not functional.

Dimensions and Elevation Markers:

- Top Left: 7'-6", +7", +14"
- Top Right: 14'-0", Window Backdrop, Window
- Bottom Left: 15'-3", 18'-11"
- Bottom Right: 16'-5 3/8", 10'-6", +14", +7"
- Central: +0", +7", +14"