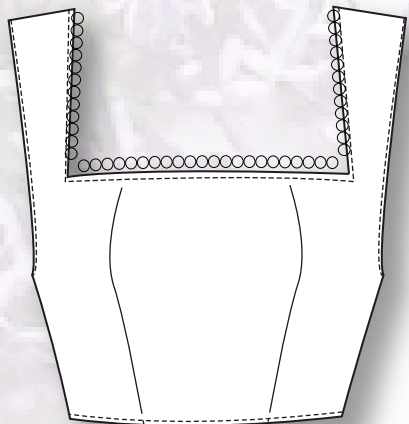
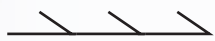


**SASH  
with  
Bead  
Chain**



**FRONT**

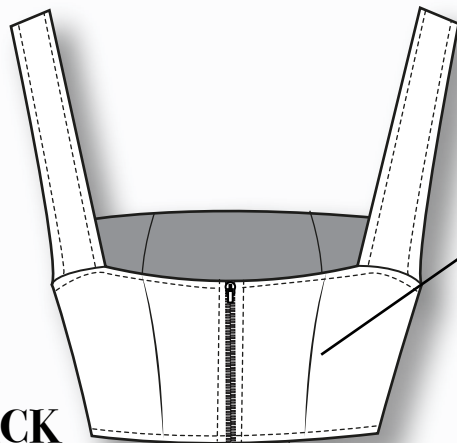
Whip Stitch  
for beads



7 in.  
Poly Zipper  
Cut to Size



**BACK**



Interfacing Reinforcement  
for Princess Bust Seams



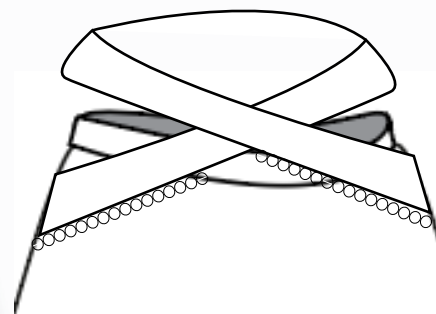
Center Seam  
Down CB,  
Along with 20"  
Zipper



**FRONT**



**BEADS**



**XSHAPE  
ACROSS  
WAIST**

Cut Skirt  
on Bias

**TWO  
BEADS  
PER  
STITCH**



**SERGED AT  
HEM**



**TEX**

