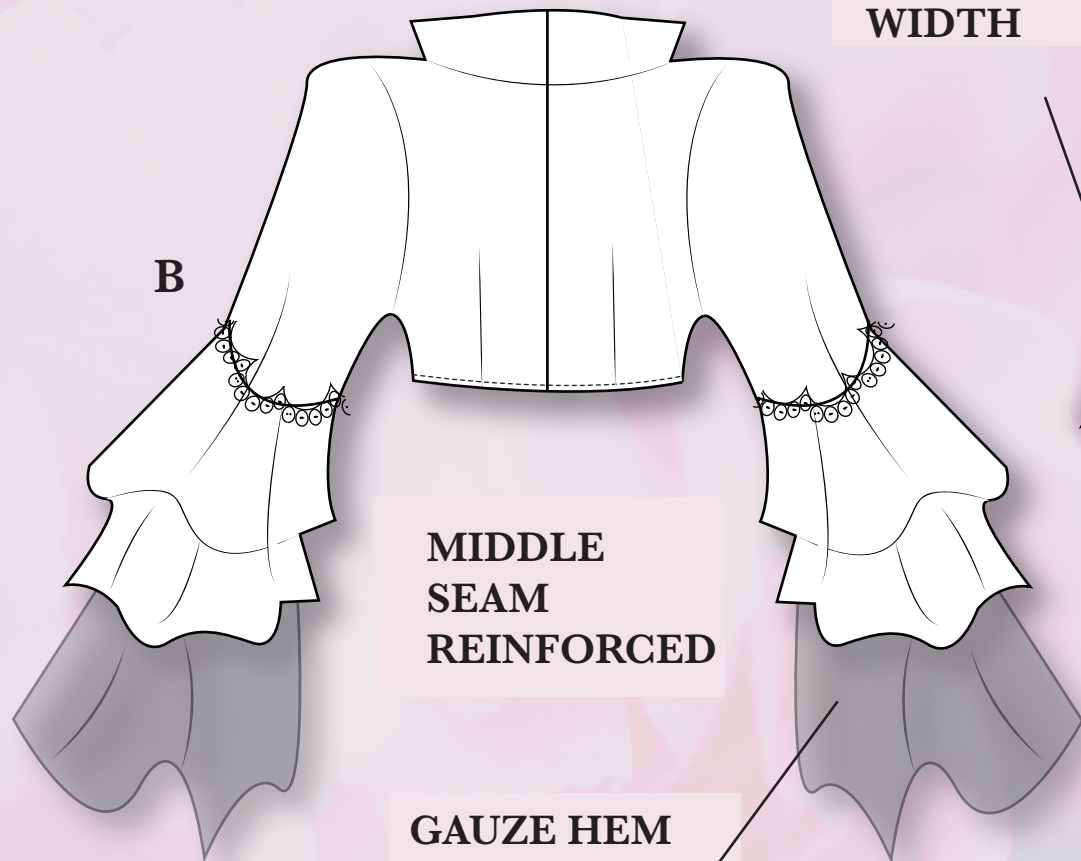


LACE AT ELBOW HAND SEWN IN

BUTTON WELT HAND SEWN IN

F

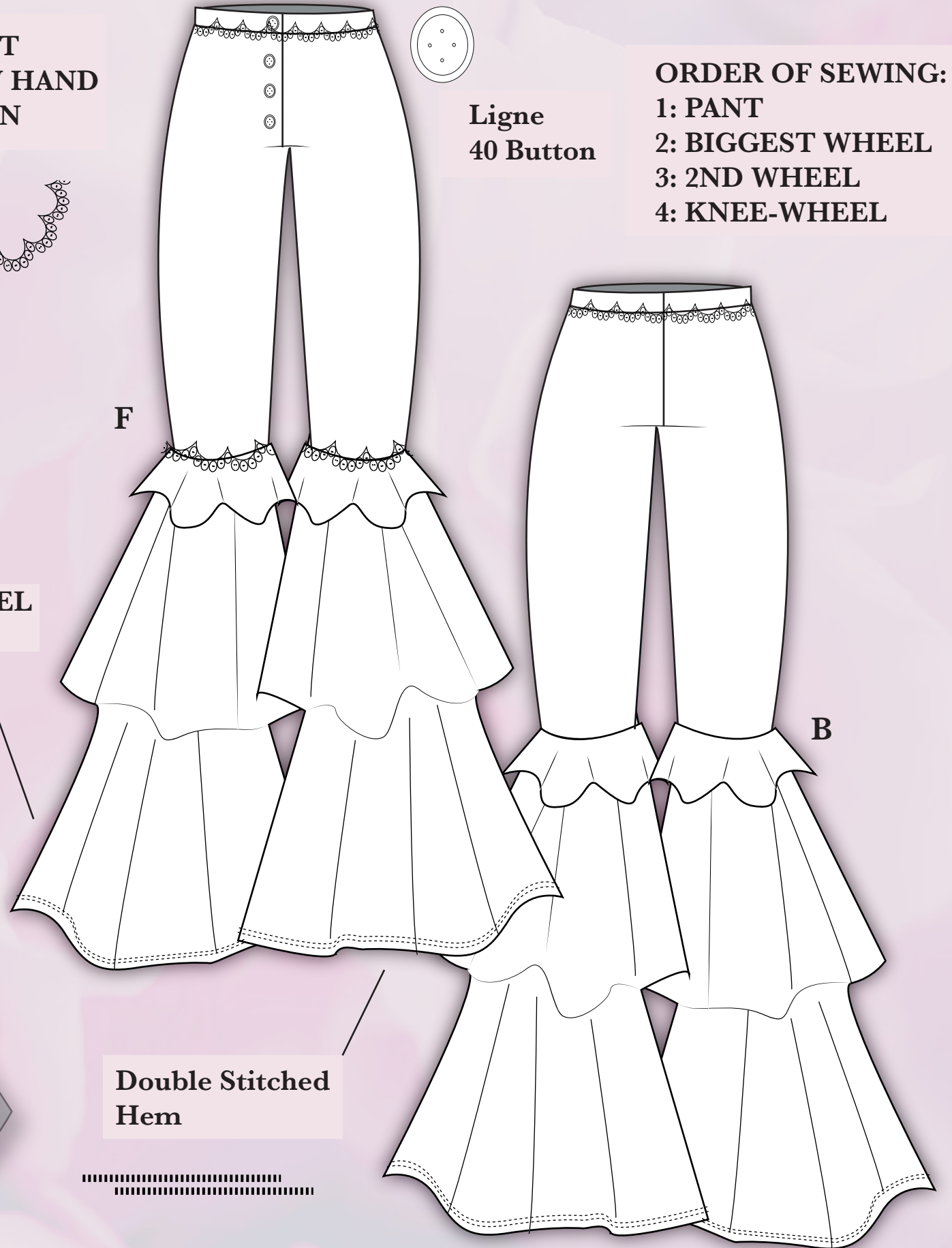
1.15 WHEEL WIDTH



B

MIDDLE SEAM REINFORCED

GAUZE HEM IS BABY HEM



**Ligne
40 Button**

ORDER OF SEWING:

- 1: PANT**
- 2: BIGGEST WHEEL**
- 3: 2ND WHEEL**
- 4: KNEE-WHEEL**

F

B

Double Stitched Hem

