

ELECTRONIC BAKHOOR BURNER

FEATURES:

- PORTABLE & ALL METALLIC CONSTRUCTION FOR DURABILITY.
- HEATER WITH NTC CONTROLLER FOR SAFETY.
- BUILT-IN HIGH CAPACITY RECHARGEABLE BATTERY.
- MICRO USB PORT FOR CONNECTING/CHARGING VIA POWER BANK.
- ALL ELECTRONIC CIRCUIT FOR ACCURATE CONTROL OF HEATING.

TABLE OF CONTENTS:

PAGE 1 .COVER PAGE

PAGE 2 .TABLE OF CONTENTS

PAGE 3 .FRONT VIEW OUTLINE DIMENSIONS

**PAGE 4 .TOP VIEW OF HEATER PLATE .
RIGHT SIDE VIEW OUTLINE DIMENSIONS
CHARGING PORT & ON/OFF SWITCH**

PAGE 5 .EXPLODED VIEW OF MAIN PARTS & BOM

**PAGE 6 .BACKGROUND: (*Courtesy of Wikipedia*)
ELECTRONIC BAKHOOR BURNER
PRINCIPLE OF OPERATION**

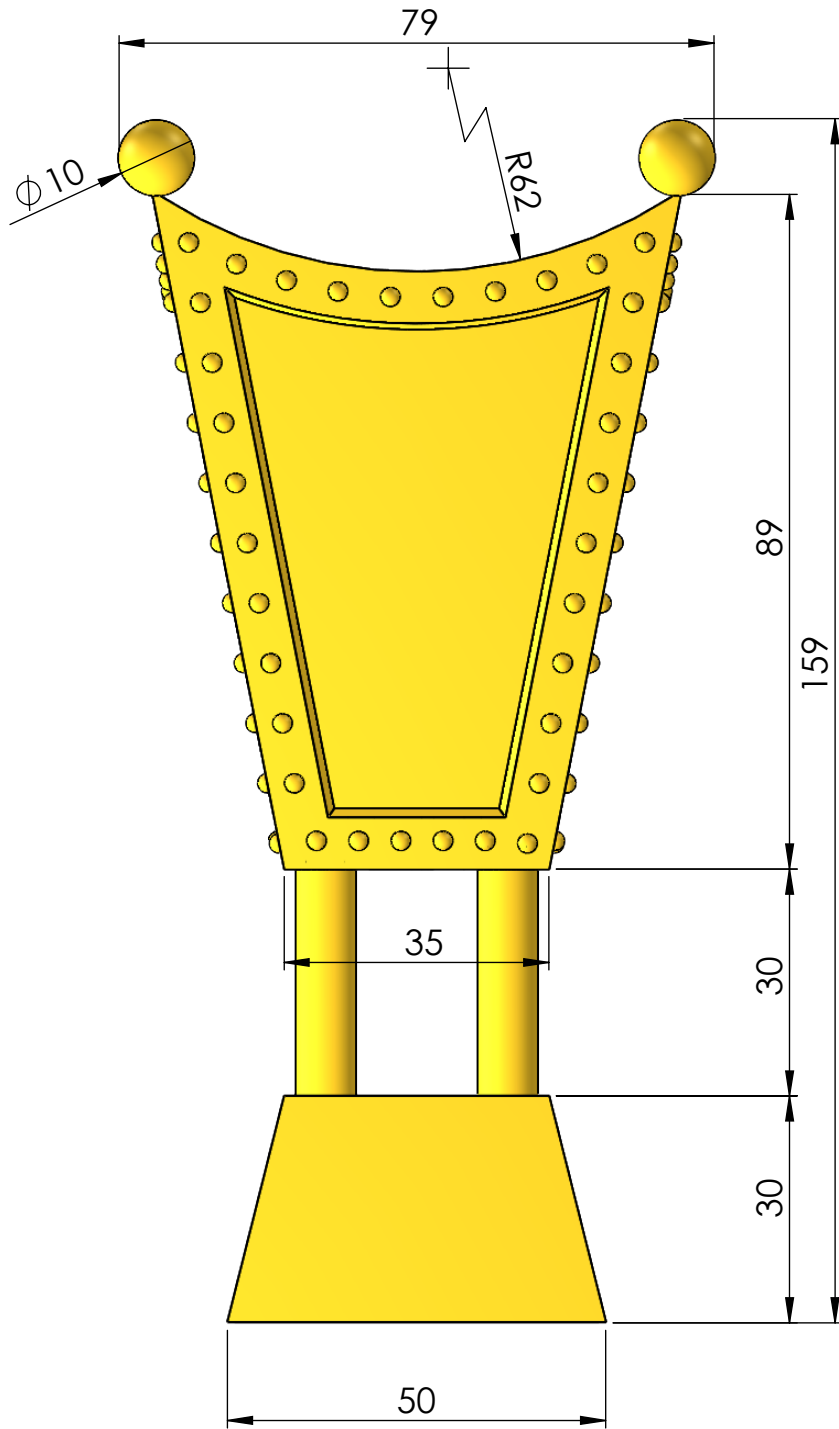
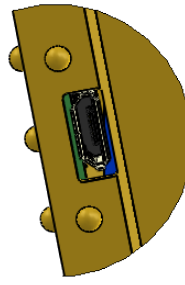
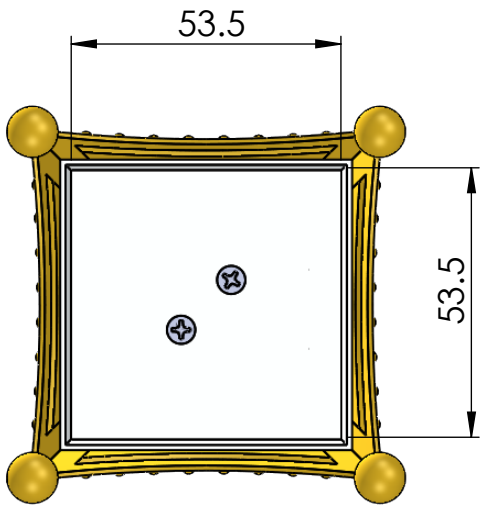
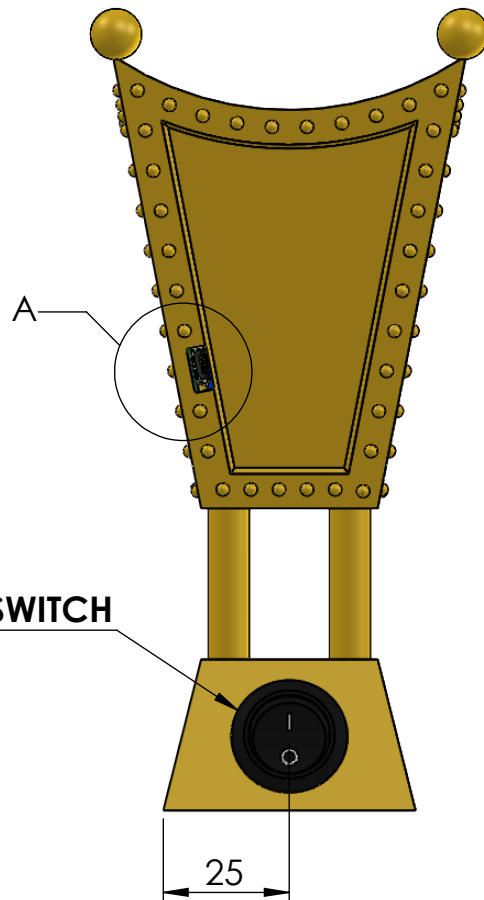
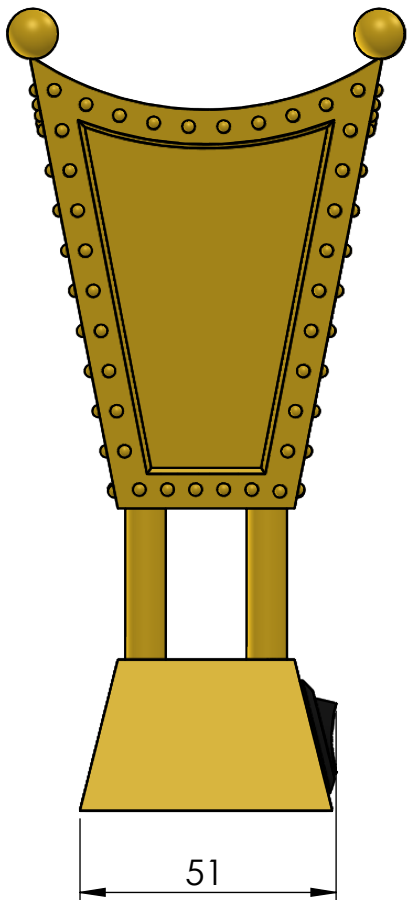


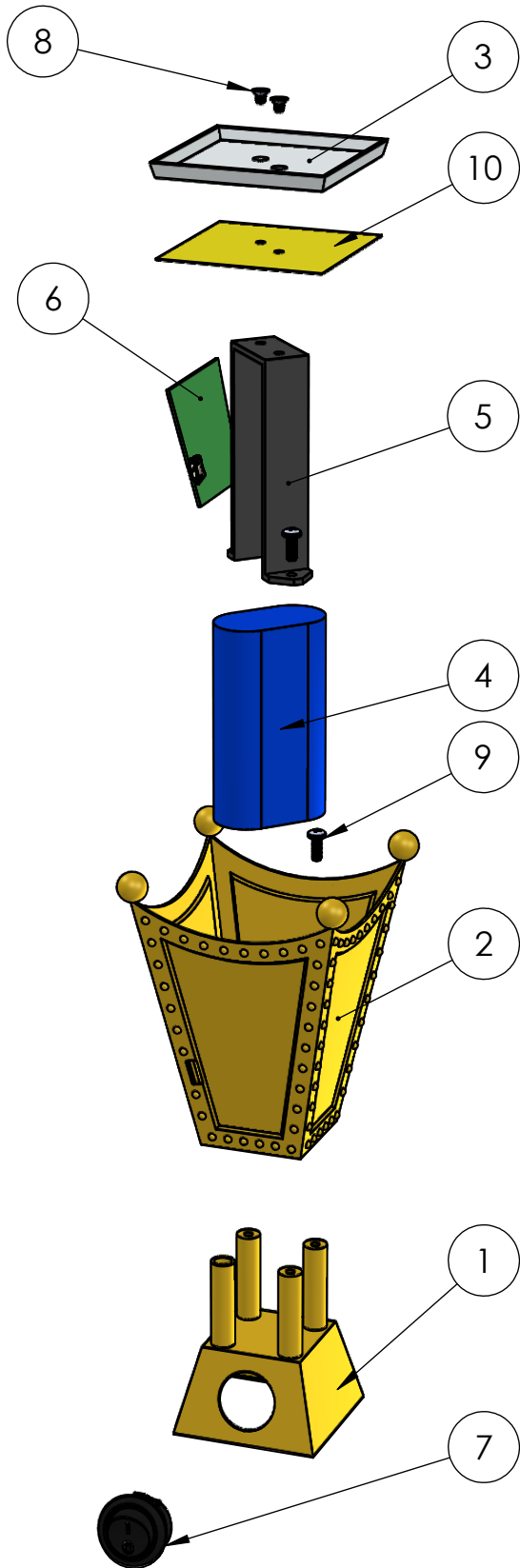
FIGURE 1 . FRONT VIEW OUTLINE DIMENSIONS



**DETAIL A
(MICRO USB CHARGING PORT)**



**FIGURE 2. (UPPER) TOP VIEW OF HEATER PLATE.
FIGURE 3. (BOTTOM LEFT) RIGHT SIDE VIEW OUTLINE DIMENSIONS
FIGURE 4. (BOTTOM RIGHT) CHARGING PORT & ON/OFF SWITCH**



ITEM NO.	PART NUMBER	150mm height/QTY.
1	LOWER PART	1
2	UPPER PART	1
3	HEATER PLATE	1
4	RECHARGEABLE BATTERY UBBL23-FL	1
5	HIGH TEMP. PLASTIC HOLDER	1
6	PCB ASSY	1
7	SPST SWITCH RR51xDxxx1	1
8	18-8 STAINLESS STEEL PHILLIPS FLAT HEAD SCREW	2
9	18-8 SS METRIC PAN HEAD PHIL MACHINE SCREW	3
10	KAPTON HEATER	1

FIGURE 5. EXPLODED VIEW OF MAIN PARTS & BOM
 (NOTE: SEE ANIMATION FOR THE ASSEMBLY/DIS-ASSEMBLY STEPS)

BACKGROUND:(*Courtesy of Wikipedia*)

A mabkhara (Arabic: ‏) is a censer found across the Arab World and Turkey.

The mabkhara was traditionally made from clay or soft stone (like the Somali Dabqaad). Most mabkharas (or mabakhir, the Arabic plural) have a square pedestal base with inward

sloping sides which support a square cup with outward sloping sides.

The wooden base is often carved out to form legs. The cup itself is lined with sheet metal.

Older burners were decorated with patterned combinations of soft metal pegs and brass tacks, often with mirrors in the panels of the upper part.

The legs were ordinarily covered with sheet metal

ELECTRONIC BAKHOOR BURNER PRINCIPLE OF OPERATION:

THE PRINCIPLE BEHIND THE ELECTRONIC BAKHOOR BURNER IS SIMILAR TO THE TRADITIONAL BAKHOOR BURNER. BUT INSTEAD OF USING CHARCOAL TO HEAT THE BAKHOOR, AN ELECTRONICALLY CONTROLLED HEATING PLATE IS USED TO BRING THE TEMPERATURE UP TO RELEASE ITS RESIN AND THEREBY RELEASING THE AROMA IN THE FORM OF SMOKE.

TO OPERATE THE DEVICE ONE JUST NEEDS TO TURN THE SWITCH (ITEM 7 OF FIG. 5) ON AND THEN PUT THE DESIRED AMOUNT OF BAKHOOR IN THE HEATING PLATE (ITEM 3 OF FIG. 5).

A NTC THERMISTOR ATTACHED TO THE HEATING PLATE (ITEM 3 OF FIG. 5) DETECTS THE REQUIRED HEATING TEMPERATURE OF THE PLATE AND FEEDBACK THIS TO THE ELECTRONIC CONTROLLER IN THE PCB FOR A MORE UNIFORM HEATING AND THUS AVOID OVER HEATING OF THE PLATE/HEATING ELEMENT. A HIGH TEMP-RATED PLASTIC HOLDER (ITEM 5 OF FIG. 5) SECURES THE HEATER PLATE AND SERVE AS INSULATION FROM HEAT PRODUCED IN THE PLATE.

A RECHARGEABLE BATTERY (ITEM 4 OF FIG. 5) OF REQUIRED AMPERAGE/CAPACITY IS BUILT-IN TO THE DEVICE FOR MOBILITY AND A MICRO USB PORT SO THE DEVICE CAN BE CONNECTED TO A POWER BANK JUST IN CASE THE POWER FROM THE INTERNAL BATTERY IS NOT 100% AND FOR A MORE EFFICIENT UTILIZATION OF ELECTRIC POWER.