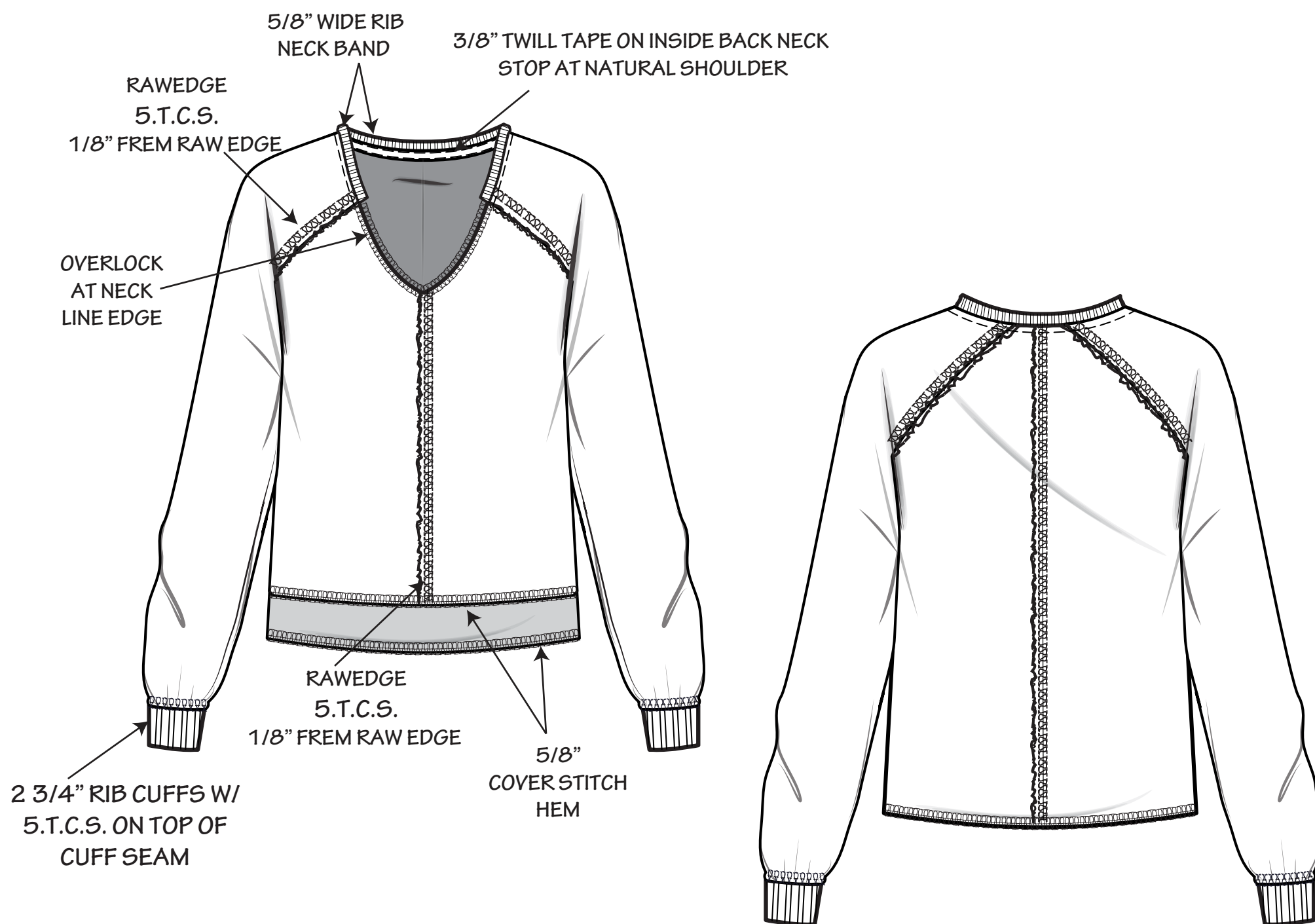


DATE: 05-24-2023
DESIGNER: DANTE G
SIZE: MISSY MEDIUM

BLENDED
CLOTHING INC

STYLE: MT3092

REF: **TK2791 WITH UPDATED SPECS**



FABRIC

SELF: CVC FRENCH TERRY

C1: CVC 2x2 RIB W/ SPANDEX

SPECS

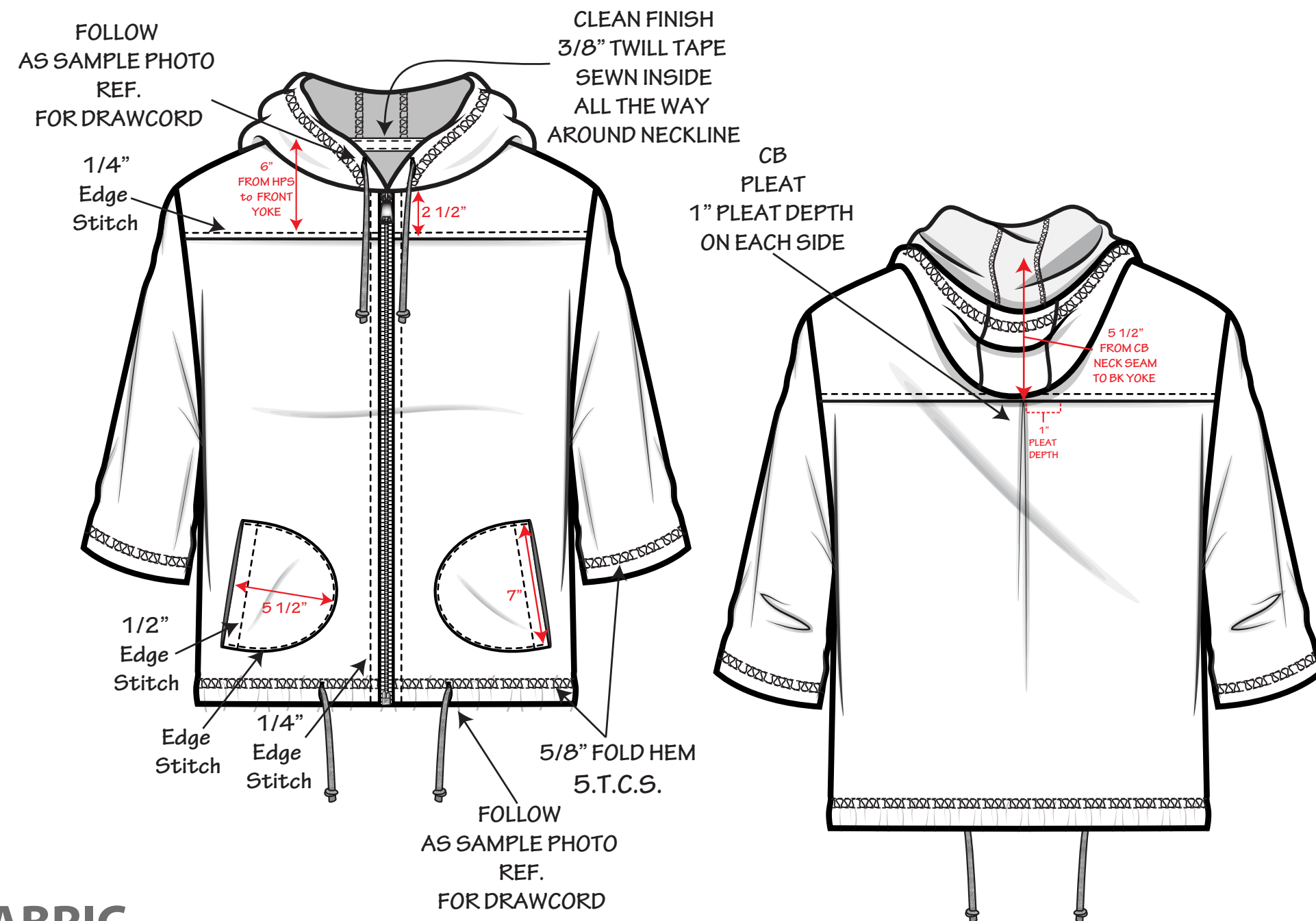
- FRONT HPS 21" (UPDATE)
- BACK HPS 25" (UPDATE)

DATE: 06-24-2023
DESIGNER: DANTE G
SIZE: MISSY MEDIUM

BLENDED
CLOTHING INC

STYLE: MT3096

REF:



FABRIC

SELF: CVC FRENCH TERRY 230 GSM

SPECS

- NECK WIDTH EDGE TO EDGE = 10"
- FRONT NECK HPS TO EDGE = 3"
- BACK NECK DROP HPS TO EDGE = 3/4"
- ACROSS SHOULDER = 23 3/4"
- ARMHOLE DROP FROM HPS = 8 1/2"
- CHEST 1" BELOW ARMHOLE = 24"
- SLEEVE LENGTH FROM CBN = 23"
- SLEEVE SWEEP = 7"
- SWEEP = 24 1/2"
- HPS = 21"